

American Fork Fire

AirOps Topo Map

MT-HLF-5087

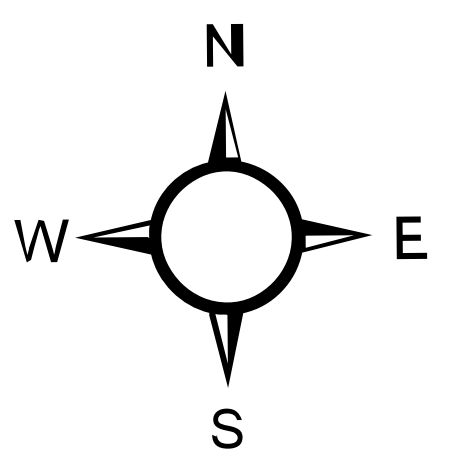
Approx. 14,325 GIS Acres

7/28/21 @ 2115

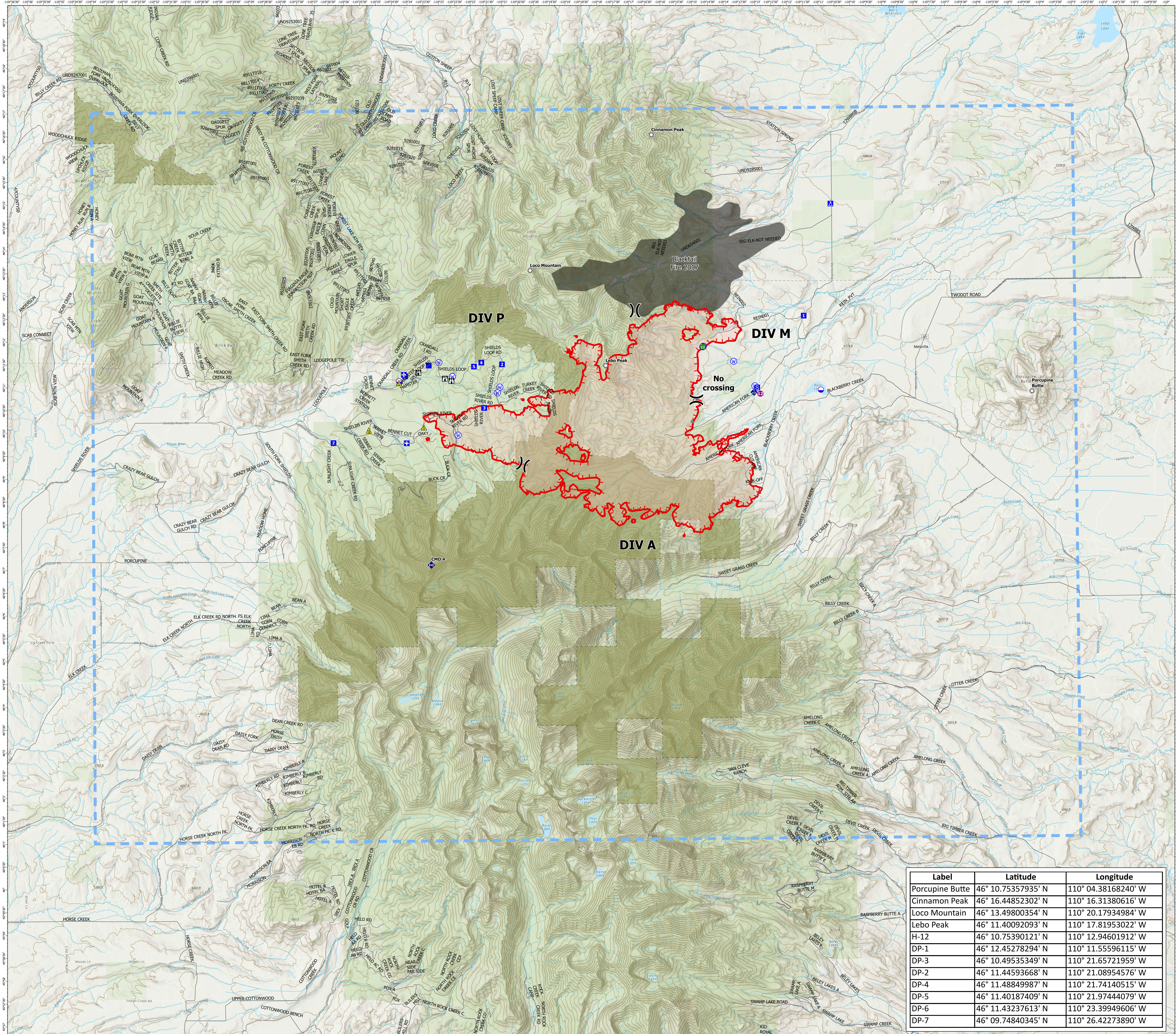
Operational Shift:
7/30/21



- Label Point
- Dip Site
- Helispot
-) Division Break
- Medical
- Drop Point
- Camp
- Staging Area
- Lookout
- Hot Spot - Spot Fire
- Other
- Landmark
- Stream Crossing
- Mobile Weather Unit
- Repeater
- ▲ Safety Zone
- ▲ Hazard
- ⊙ Water Source
- Temporary Flight Restriction
- Fire Edge
- Wildfire Daily Fire Perimeter
- 200ft Contour
- NHD Flowline
- Highways
- Trails
- Trails
- Trails
- Inventoried Roadless Area
- Montana Public Lands
- Fire History Polygon
- Roads
- Agency Roads



Created By: SA Gold Team
Date Exported: 7/30/21



Label	Latitude	Longitude
Porcupine Butte	46° 10.75357935' N	110° 04.38168240' W
Cinnamon Peak	46° 16.44852302' N	110° 16.31380616' W
Locho Mountain	46° 13.49800354' N	110° 20.17934984' W
Lebo Peak	46° 11.40092093' N	110° 17.81953022' W
H-12	46° 10.75390121' N	110° 12.94601912' W
DP-1	46° 12.45278294' N	110° 11.55596115' W
DP-3	46° 10.49535349' N	110° 21.65721959' W
DP-2	46° 11.44593668' N	110° 21.08954576' W
DP-4	46° 11.48849987' N	110° 21.74140515' W
DP-5	46° 11.40187409' N	110° 21.97444079' W
DP-6	46° 11.43237613' N	110° 23.39949606' W
DP-7	46° 09.74840345' N	110° 26.42273890' W