

American Fork Fire

AirOps Topo Map

MT-HLF-5087

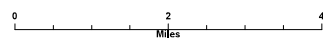
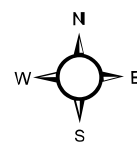
Approx. 14,325 GIS Acres

7/30/21 @ 1400

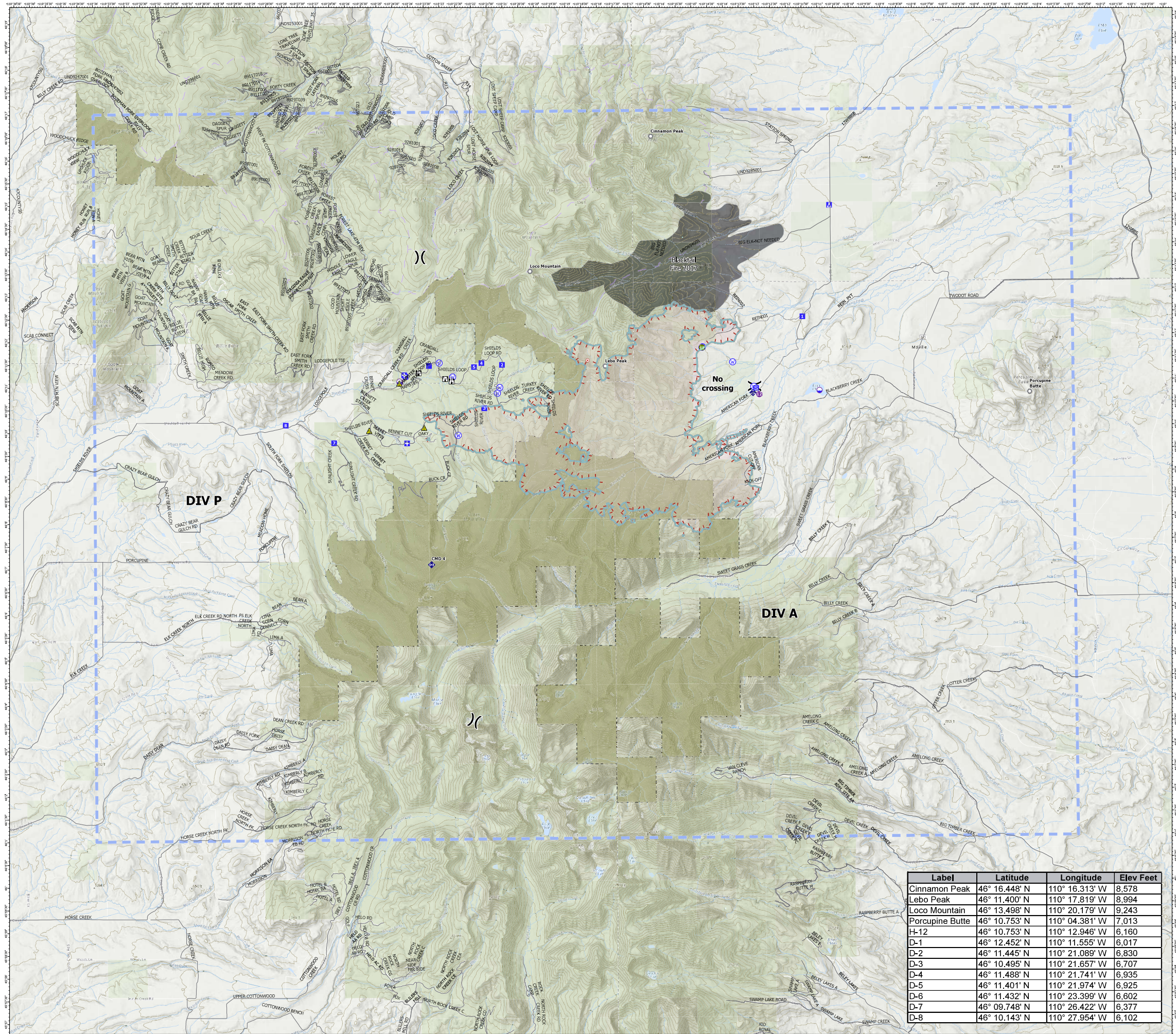
Operational Shift:
7/31/21



- Label Point
- Dip Site
 - Helispot
 -) (Division Break
 - ⊕ Medical
 - Drop Point
 - ⊠ Camp
 - ⊞ Staging Area
 - ⊞ Lookout
 - Hot Spot - Spot Fire
 - Other
 - Landmark
 - ⊕ Stream Crossing
 - ⊕ Mobile Weather Unit
 - ⊕ Repeater
 - ▲ Safety Zone
 - ⊕ Hazard
 - ⊕ Water Source
 - Temporary Flight Restriction
 - Fire Edge
 - Wildfire Daily Fire Perimeter
 - 200ft Contour
 - NHD Flowline
 - Highways
 - Trails
 - Trails
 - Trails
 - Inventoried Roadless Area
 - Montana Public Lands
 - Fire History Polygon
 - Roads
 - Agency Roads



Created By: SA Red Team
Date Exported: 7/30/2021 11:10 PM



Label	Latitude	Longitude	Elev Feet
Cinnamon Peak	46° 16.448' N	110° 16.313' W	8,578
Lebo Peak	46° 11.400' N	110° 17.819' W	8,994
Loco Mountain	46° 13.498' N	110° 20.179' W	9,243
Porcupine Butte	46° 10.753' N	110° 04.381' W	7,013
H-12	46° 10.753' N	110° 12.946' W	6,160
D-1	46° 12.452' N	110° 11.555' W	6,017
D-2	46° 11.445' N	110° 21.089' W	6,830
D-3	46° 10.495' N	110° 21.657' W	6,707
D-4	46° 11.488' N	110° 21.741' W	6,935
D-5	46° 11.401' N	110° 21.974' W	6,925
D-6	46° 11.432' N	110° 23.399' W	6,602
D-7	46° 09.748' N	110° 26.422' W	6,377
D-8	46° 10.143' N	110° 27.954' W	6,102