

American Fork Fire Operations Map

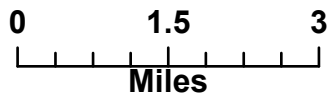
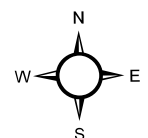
MT-HLF-5087

14,325 Acres from IR @ 2040 7/30

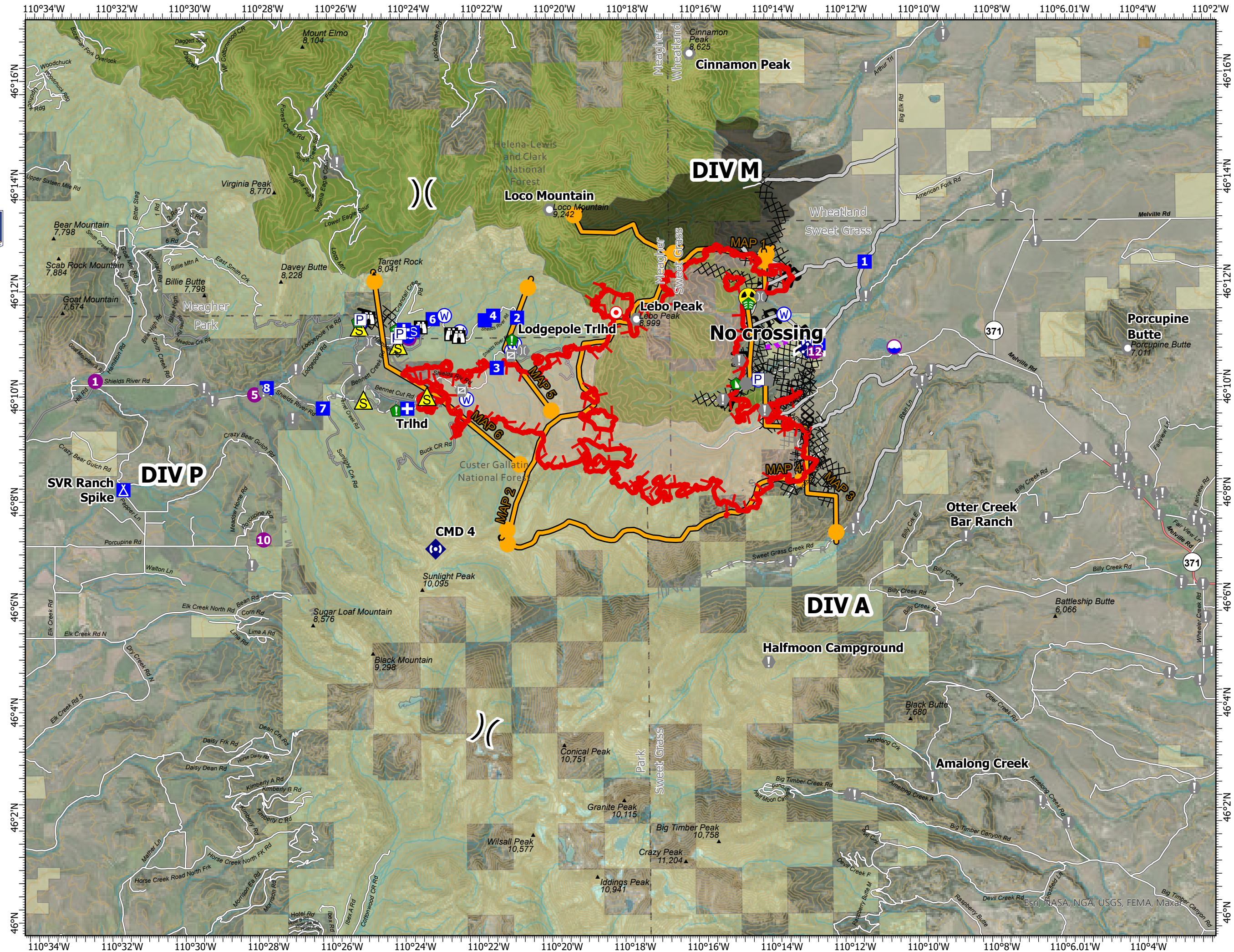
Operational Shift:
8/4/2021



- ▲ Gap; Summit
- Label Point
- Ⓟ Pump
- Ⓛ Dip Site
- Ⓜ Helispot
- ⌋ Division Break
- Ⓜ Medical
- Ⓛ Drop Point
- Ⓜ Camp
- Ⓜ Staging Area
- Ⓜ Lookout
- Ⓜ Hot Spot - Spot Fire
- Ⓜ Value at Risk
- Ⓜ Other
- Ⓜ Landmark
- Ⓜ Gate
- Ⓜ Bridge
- Ⓜ Structure Wrap
- Ⓜ Stream Crossing
- Ⓜ Resource Location
- Ⓜ Repair Point
- Ⓜ Fence - Cut/Damaged
- Ⓜ Dozer Push
- Ⓜ Mobile Weather Unit
- Ⓜ Repeater
- Ⓜ Safety Zone
- Ⓜ Hazard
- Ⓜ Water Source
- Ⓜ Structure- State Data
- Ⓜ Defensible - Prep and Hold
- Trails
- Secondary Highway
- Paved Roads
- Dirt (Not Paved)
- NHD Flowline
- 200ft Contour
- Ⓜ Completed Dozer Line
- Ⓜ Completed Hand Line
- Ⓜ Completed Road as Line
- Ⓜ Planned Dozer Line
- Ⓜ Planned Secondary Line
- Ⓜ Access or Improved Road
- Ⓜ Management Action Point
- Ⓜ Temporary Flight Restriction
- Ⓜ Fire Edge
- Ⓜ Wildfire Daily Fire Perimeter
- Ⓜ Fire History Polygon
- Ⓜ Inventoried Roadless Area
- Ⓜ NHD Waterbody
- Ⓜ Other Fed Government
- Ⓜ State MT
- Ⓜ County cBoundary
- Ⓜ Custer Gallatin National Forest
- Ⓜ Helena-Lewis and Clark National Forest



Created By: SA Red Team
Date Exported: 8/3/2021 7:52 PM
WGS84 Lat/Long Grid



Esri, NASA, NGA, USGS, FEMA, Maxar