

# American Fork Fire Briefing Map

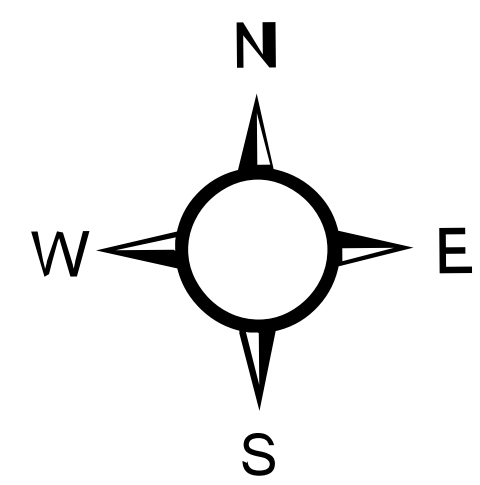
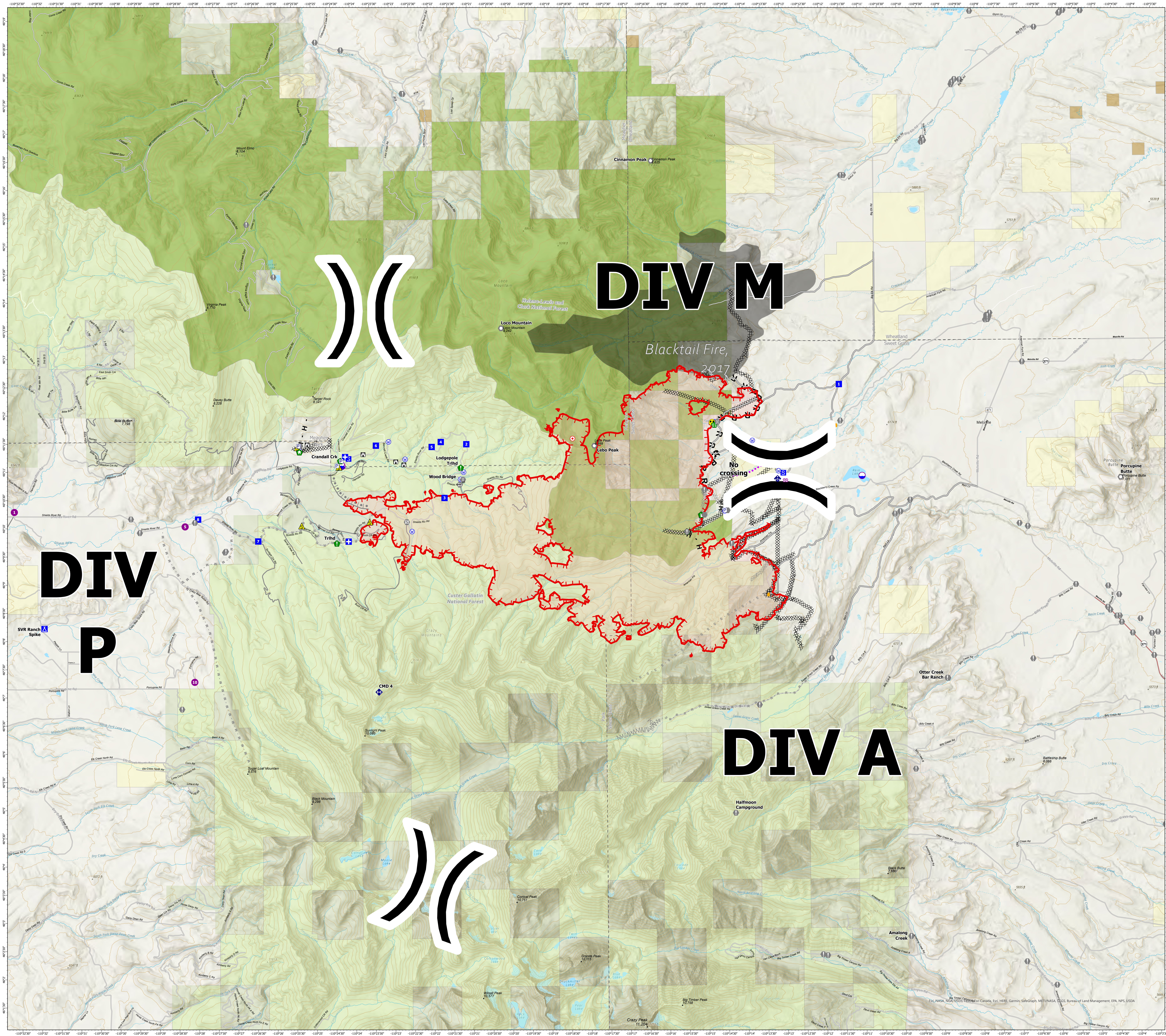
MT-HLF-5087

14,397 Acres from IR @ 2040 7/30

Operational Shift: 8/4/2021



- ▲ Gap; Summit
- Label Point
- P Pump
- Dip Site
- Helispot
- ) ( Division Break
- ⚕ Medical
- ⚓ Drop Point
- ⛺ Camp
- S Staging Area
- 🏠 Lookout
- 🔥 Hot Spot - Spot Fire
- ⚠ Value at Risk
- ⚙ Other
- 📍 Landmark
- 🚪 Gate
- 🌉 Bridge
- 🏠 Structure Wrap
- 🌊 Stream Crossing
- 📍 Resource Location
- 🔧 Repair Point
- 🚧 Fence - Cut/Damaged
- 🚧 Dozer Push
- 📶 Mobile Weather Unit
- 📶 Repeater
- ⚠ Safety Zone
- ☠ Hazard
- 🚰 Water Source
- Structure- State Data
- 🏠 Defensible - Prep and Hold
- ⚡ Completed Dozer Line
- H - H Completed Hand Line
- R - R Completed Road as Line
- ⚡ Planned Dozer Line
- S - S - S Planned Secondary Line
- 🛣 Access or Improved Road
- 🚧 Management Action Point
- 🚧 Temporary Flight Restriction
- 🔥 Fire Edge
- 🔥 Wildfire Daily Fire Perimeter
- 📍 Trails
- 🚧 Inventoried Roadless Area
- 🛣 Secondary Highway
- 🛣 Paved Roads
- 🛣 Dirt (Not Paved)
- 🔥 Fire History Polygon
- 🌊 NHD Waterbody
- 🌊 NHD Flowline
- 📏 200ft Contour
- 🗺 County Boundary
- 🏠 Other Fed Government
- 🏠 State MT
- 🌲 Custer Gallatin National Forest
- 🌲 Helena-Lewis and Clark National Forest



0 2 4 Miles