

American Fork Fire

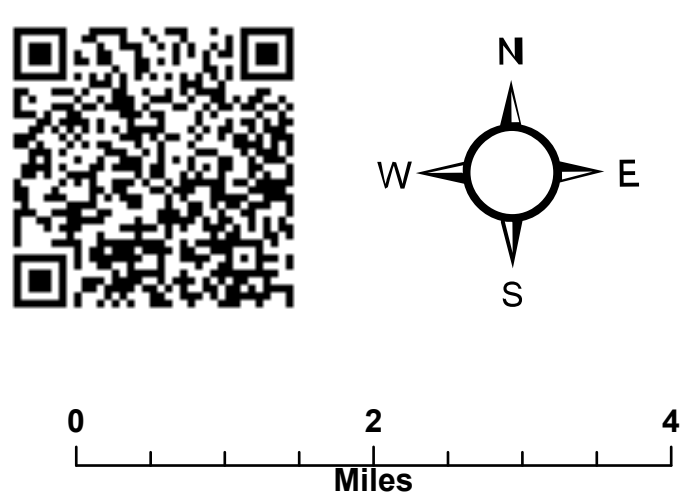
Operations Map
MT-HLF-5087

14,325 Acres from IR @
2040 7/30

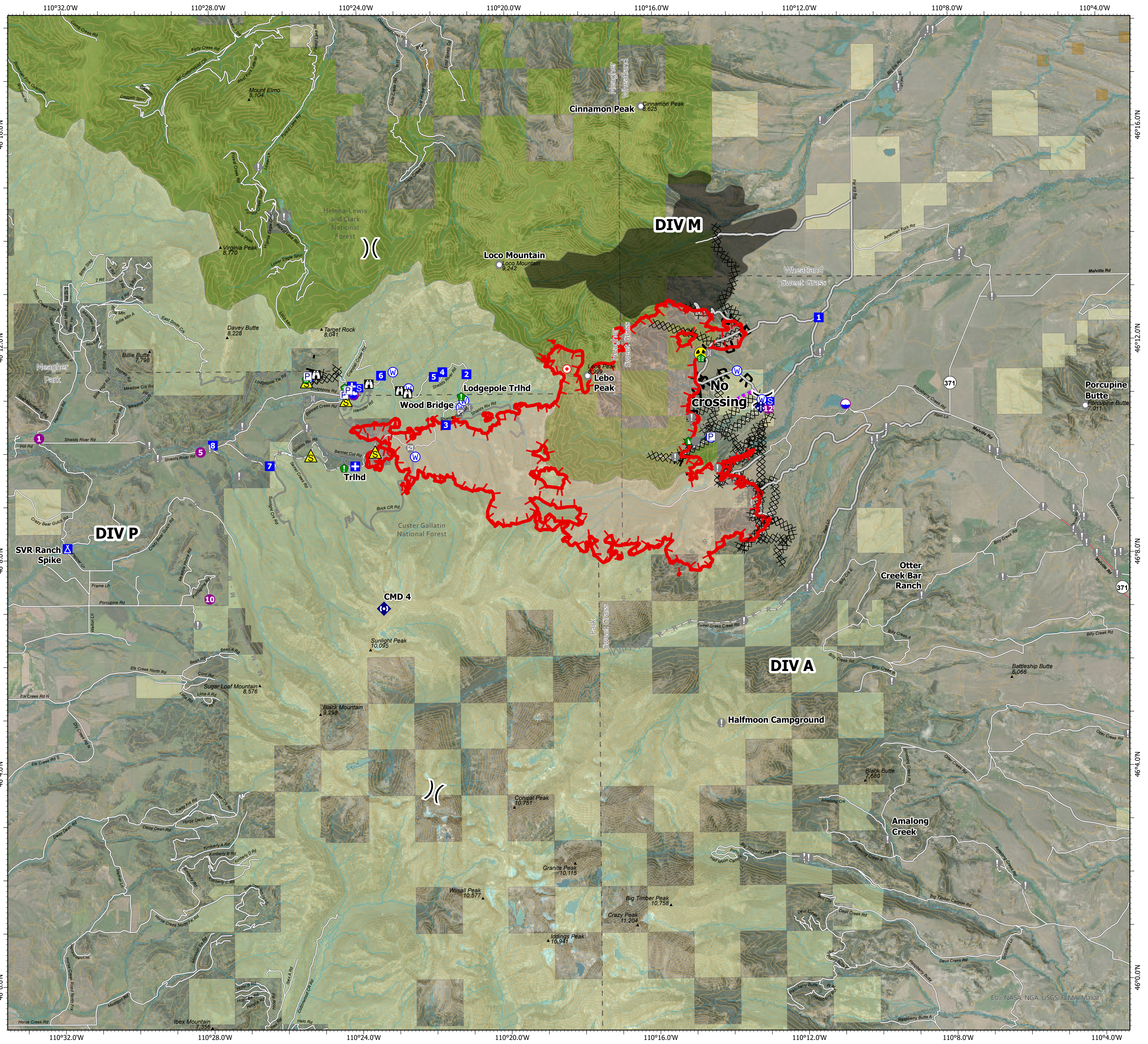
Operational Shift:
8/4/2021



- ▲ Gap; Summit
- Structure- State Data
- Defensible - Prep and Hold
- Label Point
- Ⓟ Pump
- Ⓛ Dip Site
- Ⓜ Helispot
- ⎓ Division Break
- Ⓜ Medical
- Ⓛ Drop Point
- Ⓛ Camp
- Ⓛ Staging Area
- Ⓛ Lookout
- Ⓛ Hot Spot - Spot Fire
- Ⓛ Value at Risk
- Ⓛ Other
- Ⓛ Landmark
- Ⓛ Gate
- Ⓛ Bridge
- Ⓛ Structure Wrap
- Ⓛ Stream Crossing
- Ⓛ Resource Location
- Ⓛ Repair Point
- Ⓛ Fence - Cut/Damaged
- Ⓛ Dozer Push
- Ⓛ Mobile Weather Unit
- Ⓛ Repeater
- Ⓛ Safety Zone
- Ⓛ Hazard
- Ⓛ Water Source
- Ⓛ Completed Dozer Line
- Ⓛ Completed Hand Line
- Ⓛ Completed Road as Line
- Ⓛ Planned Dozer Line
- Ⓛ Planned Secondary Line
- Ⓛ Access or Improved Road
- Ⓛ Road
- Ⓛ Management Action Point
- Ⓛ Temporary Flight Restriction
- Ⓛ Fire Edge
- Ⓛ Trails
- Ⓛ 200ft Contour
- Ⓛ NHD Flowline
- Ⓛ Wildfire Daily Fire Perimeter
- Ⓛ Inventoried Roadless Area
- Ⓛ Fire History Polygon
- Ⓛ NHD Waterbody
- Ⓛ County Boundary
- Ⓛ Other Fed Government
- Ⓛ State MT
- Ⓛ Custer Gallatin National Forest
- Ⓛ Helena-Lewis and Clark National Forest
- Ⓛ Secondary Highway
- Ⓛ Paved Roads
- Ⓛ Dirt (Not Paved)



Created by: SA Red Team
Date Exported: 8/3/2021 1931
North American 1983 Datum, LatLong Grid



Esri, NASA, NGA, USGS, FEMA, Maxar