

American Fork Fire

Pilot Map

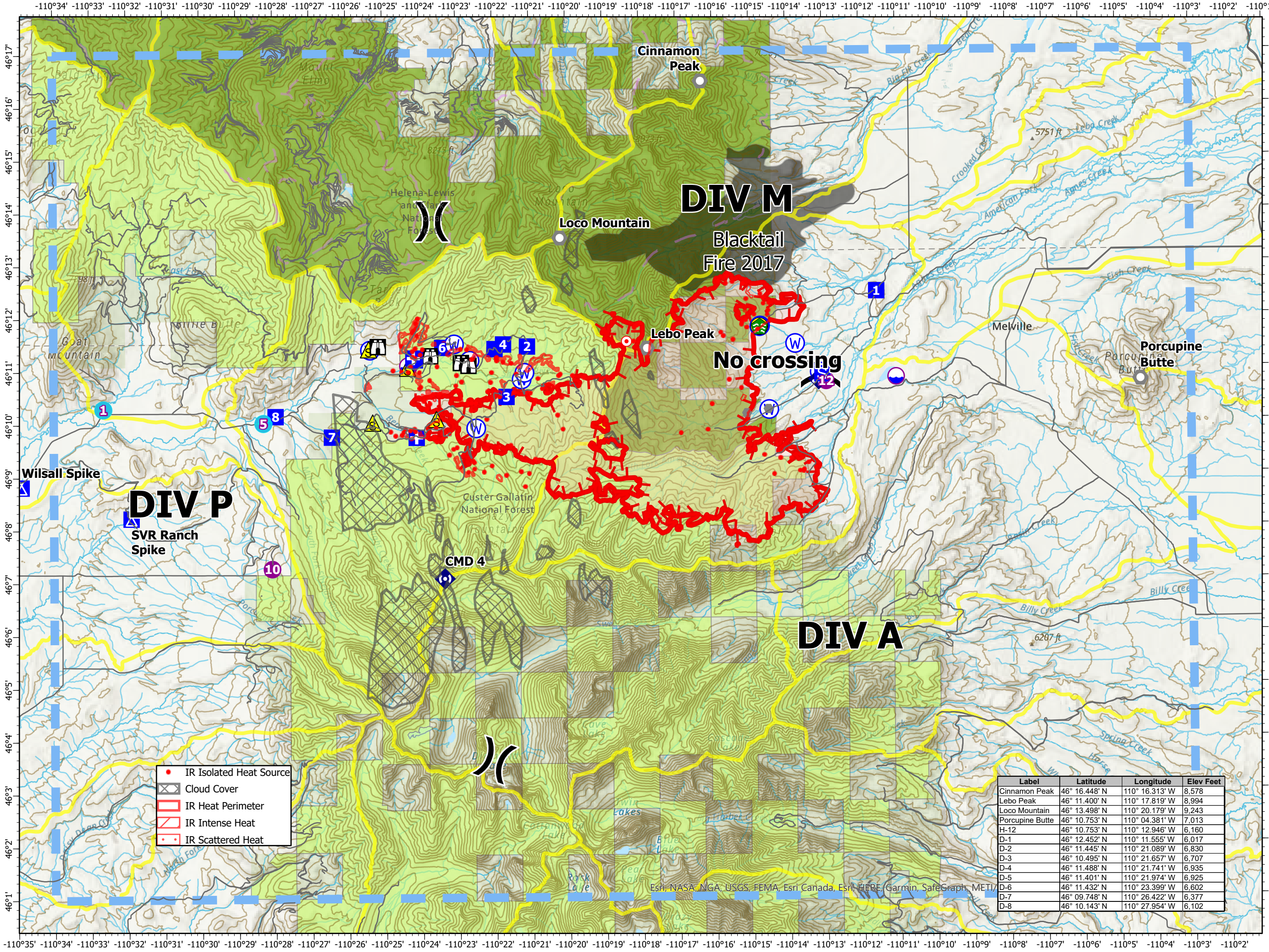
MT-HLF-5087

14,738 Acres from IR
8/3/21 @ 2247

Operational Shift:
8/4/21



- Agency Roads
- Roads
- Label Point
- Dip Site
- Helispot
-) (Division Break
- ⊕ Medical
- Drop Point
- ⛺ Camp
- Ⓜ Staging Area
- 🏠 Lookout
- Hot Spot - Spot Fire
- Other
- Landmark
- 🌿 Stream Crossing
- 📡 Mobile Weather Unit
- 📡 Repeater
- ⚠ Safety Zone
- ☠ Hazard
- 🚰 Water Source
- 🚫 Temporary Flight Restriction
- 🔴 Fire Edge
- 🔴 Wildfire Daily Fire Perimeter
- 🟡 Watershed boundary
- 🟤 Inventoried Roadless Area
- Trails
- 200ft Contour
- 🟤 Fire History Polygon
- 🟢 Custer Gallatin National Forest
- 🟡 Helena-Lewis and Clark National Forest



- IR Isolated Heat Source
- ☁ Cloud Cover
- 🔴 IR Heat Perimeter
- 🔴 IR Intense Heat
- IR Scattered Heat

Label	Latitude	Longitude	Elev Feet
Cinnamon Peak	46° 16.448' N	110° 16.313' W	8,578
Lebo Peak	46° 11.400' N	110° 17.819' W	8,994
Loco Mountain	46° 13.498' N	110° 20.179' W	9,243
Porcupine Butte	46° 10.753' N	110° 04.381' W	7,013
H-12	46° 10.753' N	110° 12.946' W	6,160
D-1	46° 12.452' N	110° 11.555' W	6,017
D-2	46° 11.445' N	110° 21.089' W	6,830
D-3	46° 10.495' N	110° 21.657' W	6,707
D-4	46° 11.488' N	110° 21.741' W	6,935
D-5	46° 11.401' N	110° 21.974' W	6,925
D-6	46° 11.432' N	110° 23.399' W	6,602
D-7	46° 09.748' N	110° 26.422' W	6,377
D-8	46° 10.143' N	110° 27.954' W	6,102