

# American Fork Fire

AirOps Topo Map

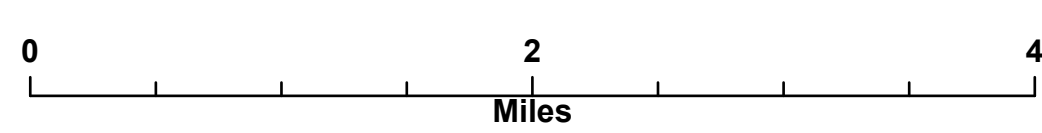
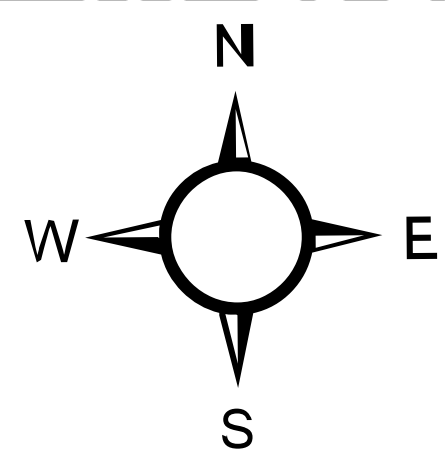
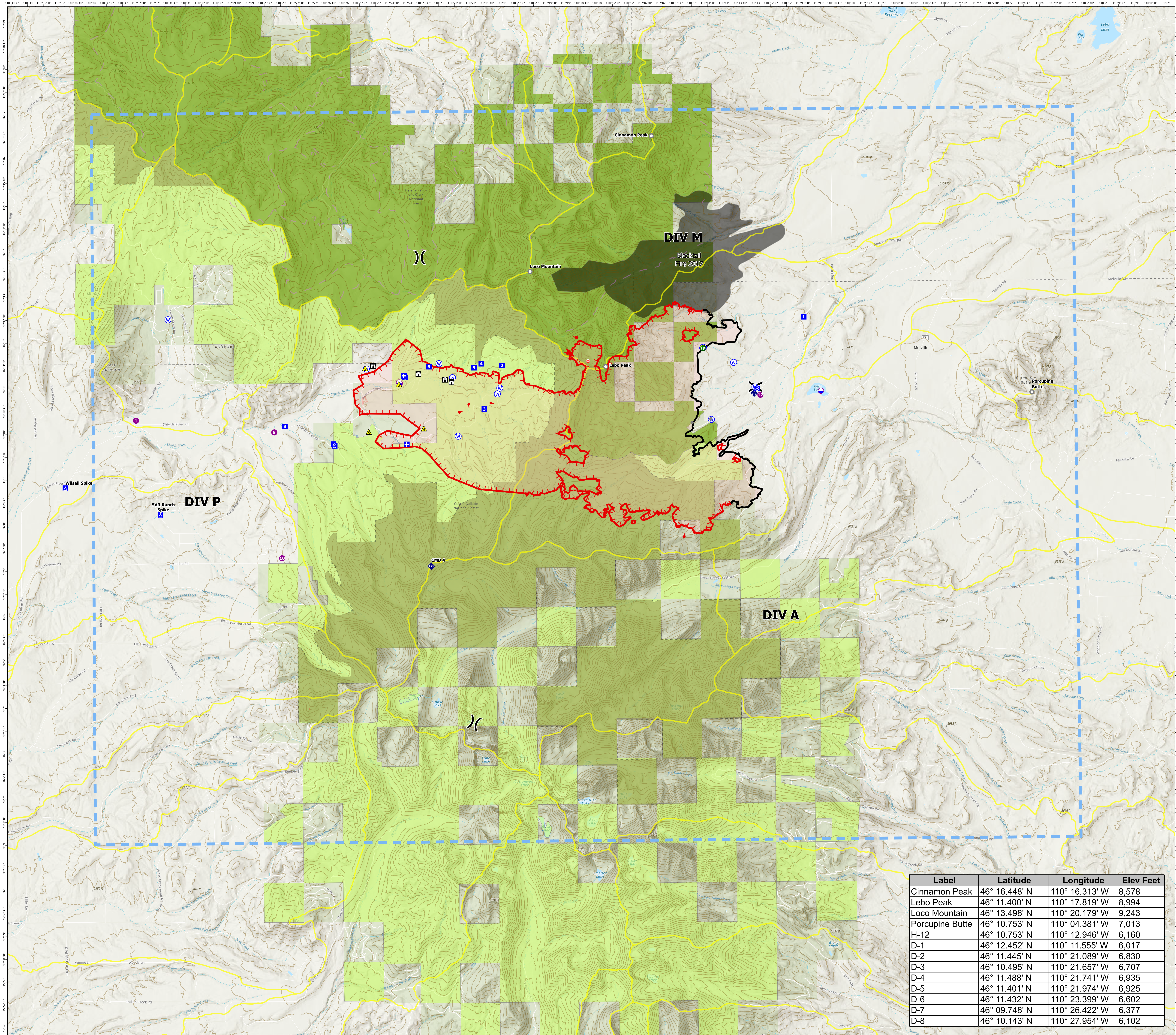
MT-HLF-5087

14,738 Acres from IR  
8/3/21 @ 2247

**Operational Shift:**  
**8/5/21**



- Dip Site
- Helispot
- ✕ Division Break
- ⊠ Medical
- Drop Point
- Camp
- Staging Area
- ⊠ Lookout
- Hot Spot - Spot Fire
- Other
- Landmark
- Stream Crossing
- ◆ Mobile Weather Unit
- ◆ Repeater
- ▲ Safety Zone
- ▲ Hazard
- Water Source
- Temporary Flight Restriction
- Fire Edge
- Contained Line
- Wildfire Daily Fire Perimeter
- Trails
- Inventoried Roadless Area
- Fire History Polygon
- Watershed boundary
- Custer Gallatin NF
- Helena-Lewis and Clark NF



Created By: SA Red Team  
Date Exported: 8/4/2021 9:28 PM

Label	Latitude	Longitude	Elev Feet
Cinnamon Peak	46° 16.448' N	110° 16.313' W	8,578
Lebo Peak	46° 11.400' N	110° 17.819' W	8,994
Loco Mountain	46° 13.498' N	110° 20.179' W	9,243
Porcupine Butte	46° 10.753' N	110° 04.381' W	7,013
H-12	46° 10.753' N	110° 12.946' W	6,160
D-1	46° 12.452' N	110° 11.555' W	6,017
D-2	46° 11.445' N	110° 21.089' W	6,830
D-3	46° 10.495' N	110° 21.657' W	6,707
D-4	46° 11.488' N	110° 21.741' W	6,935
D-5	46° 11.401' N	110° 21.974' W	6,925
D-6	46° 11.432' N	110° 23.399' W	6,602
D-7	46° 09.748' N	110° 26.422' W	6,377
D-8	46° 10.143' N	110° 27.954' W	6,102