

American Fork Fire Briefing Map

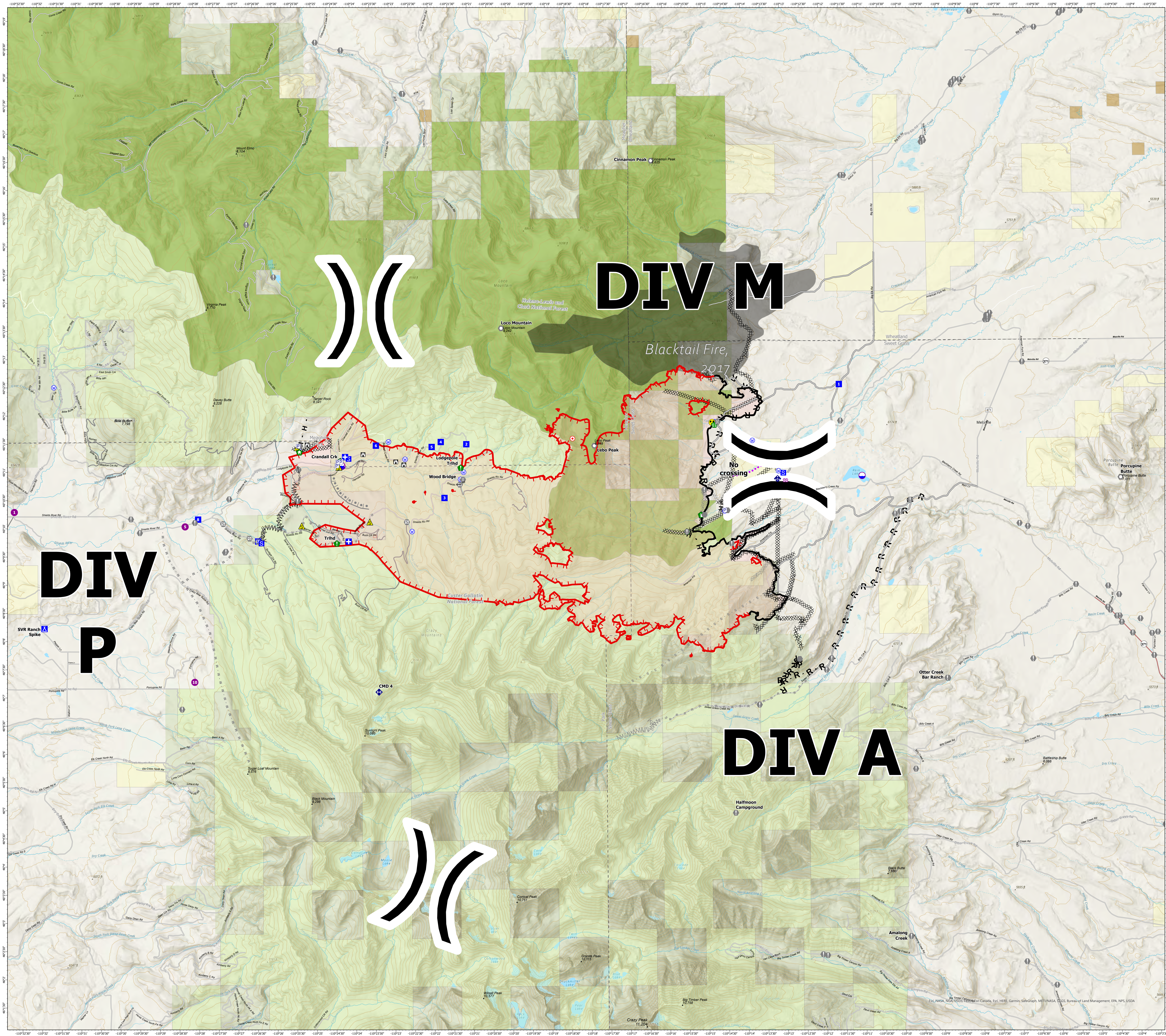
MT-HLF-5087

14,738 Acres from IR @ 2247 8/3

Operational Shift: 8/5/2021



- | | |
|------------------------|--|
| ▲ Gap; Summit | ■ Structure- State Data |
| ● Label Point | 🚧 Defensible - Prep and Hold |
| Ⓟ Pump | Ⓜ Completed Dozer Line |
| Ⓛ Dip Site | Ⓜ - Ⓜ Completed Hand Line |
| Ⓛ Helispot | Ⓜ - Ⓜ Completed Road as Line |
|) (Division Break | Ⓜ - Ⓜ Planned Dozer Line |
| Ⓜ Medical | Ⓜ - Ⓜ Planned Secondary Line |
| Ⓜ Drop Point | Ⓜ Access or Improved Road |
| Ⓜ Camp | Ⓜ Management Action Point |
| Ⓜ Staging Area | Ⓜ Temporary Flight Restriction |
| Ⓜ Lookout | Ⓜ Fire Edge |
| Ⓜ Hot Spot - Spot Fire | Ⓜ Wildfire Daily Fire Perimeter |
| Ⓜ Value at Risk | Ⓜ Trails |
| Ⓜ Other | Ⓜ Inventoried Roadless Area |
| Ⓜ Landmark | Ⓜ Secondary Highway |
| Ⓜ Gate | Ⓜ Paved Roads |
| Ⓜ Bridge | Ⓜ Dirt (Not Paved) |
| Ⓜ Structure Wrap | Ⓜ Fire History Polygon |
| Ⓜ Stream Crossing | Ⓜ NHD Waterbody |
| Ⓜ Resource Location | Ⓜ NHD Flowline |
| Ⓜ Repair Point | Ⓜ 200ft Contour |
| Ⓜ Fence - Cut/Damaged | Ⓜ County Boundary |
| Ⓜ Dozer Push | Ⓜ Other Fed Government |
| Ⓜ Mobile Weather Unit | Ⓜ State MT |
| Ⓜ Repeater | Ⓜ Custer Gallatin National Forest |
| Ⓜ Safety Zone | Ⓜ Helena-Lewis and Clark National Forest |
| Ⓜ Hazard | |
| Ⓜ Water Source | |



) (**DIV M**

DIV P

DIV A

) (

