

American Fork Fire

Operations IR Map

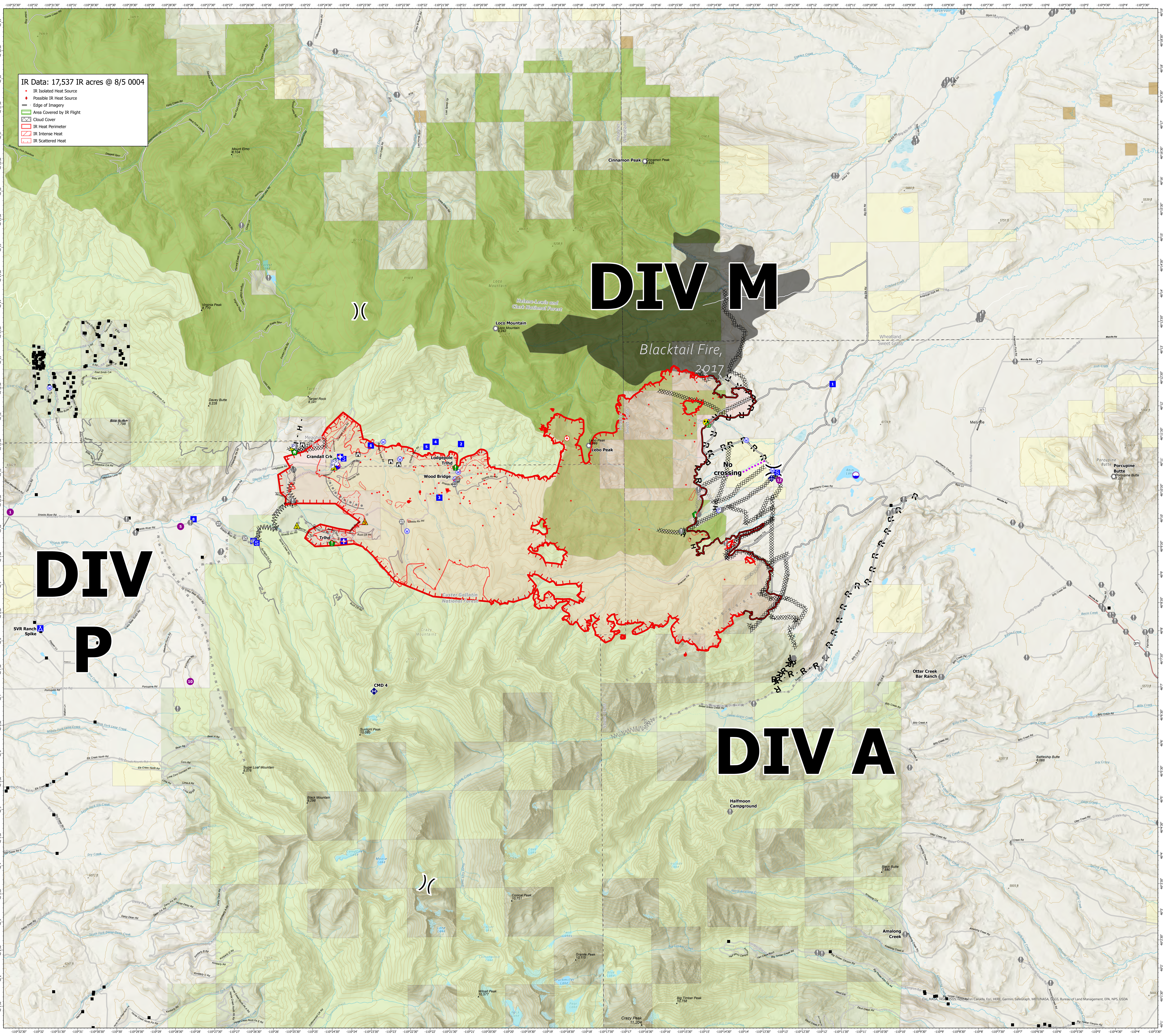
MT-HLF-5087

14,738 Acres from IR @ 2247 8/3/21

Operational Shift: 8/5/2021



- Other Property
- Pump
- Water Tank
- Label Point
- Aerial Hazard
- Airstrip or Airport
- Check Point
- Dip Site
- Mobile Retardant Base
- Helispot
- Helibase
- Sling Site
- Unimproved Landing Area
- Division Break
- Branch Break
- Zone Break
- Medical
- Incident Command Post
- Drop Point
- Closure
- Camp
- Staging Area
- Lookout
- Hot Spot - Spot Fire
- Fire Origin
- Value at Risk
- Other
- Landmark
- Gate
- Fire Station
- Bridge
- Water Development or Draft Site
- Structure Wrap
- Stream Crossing
- Road Repair
- Retardant in Avoidance Area
- Resource Location
- Repair Point
- Landing or Log Deck
- Hazard Tree
- Fence - Cut/Damaged
- Dozer Push
- Culvert
- Clean Up Area
- Mobile Weather Unit
- Internet Access
- Repeater
- Safety Zone
- Hazard
- Water Source
- Restricted Water Source
- Structure- State Data
- Gpp; Summit
- Completed Burnout
- Completed Dozer Line
- Completed Fuel Break
- Completed Hand Line
- Completed Mixed Construction Line
- Completed Plow Line
- Completed Road as Line
- Planned Burnout
- Planned Dozer Line
- Planned Fuel Break
- Planned Hand Line
- Planned Mixed Construction Line
- Planned Plow Line
- Planned Road as Line
- Planned Secondary Line
- Access or Improved Road
- Fence
- Highlighted Feature
- Management Action Point
- Other
- Repair Line
- Road Repair
- Escape Route
- Aerial Hazard
- Water Drop
- Foam Drop
- Retardant Drop
- Route
- US Launch and Recovery Zone
- Temporary Flight Restriction
- Fire Edge
- Contained Line
- Trails
- Inventoried Roadless Area
- Primary Highway
- Secondary Highway
- Paved Roads
- Dirt (Not Paved)
- Interstate Not Paved
- US Route Not Paved
- Highways
- Special Interest Area
- Fire History Polygon
- County Boundary
- Other Fed Government
- State MT
- Local or City
- County
- Custer Gallatin National Forest
- Helena-Lewis and Clark National Forest



IR Data: 17,537 IR acres @ 8/5 0004

- IR Isolated Heat Source
- Possible IR Heat Source
- Edge of Imagery
- Area Covered by IR Flight
- Cloud Cover
- IR Heat Perimeter
- IR Intense Heat
- IR Scattered Heat

DIV M

DIV P

DIV A

