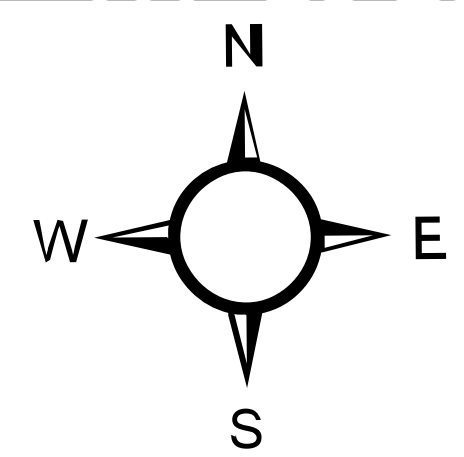
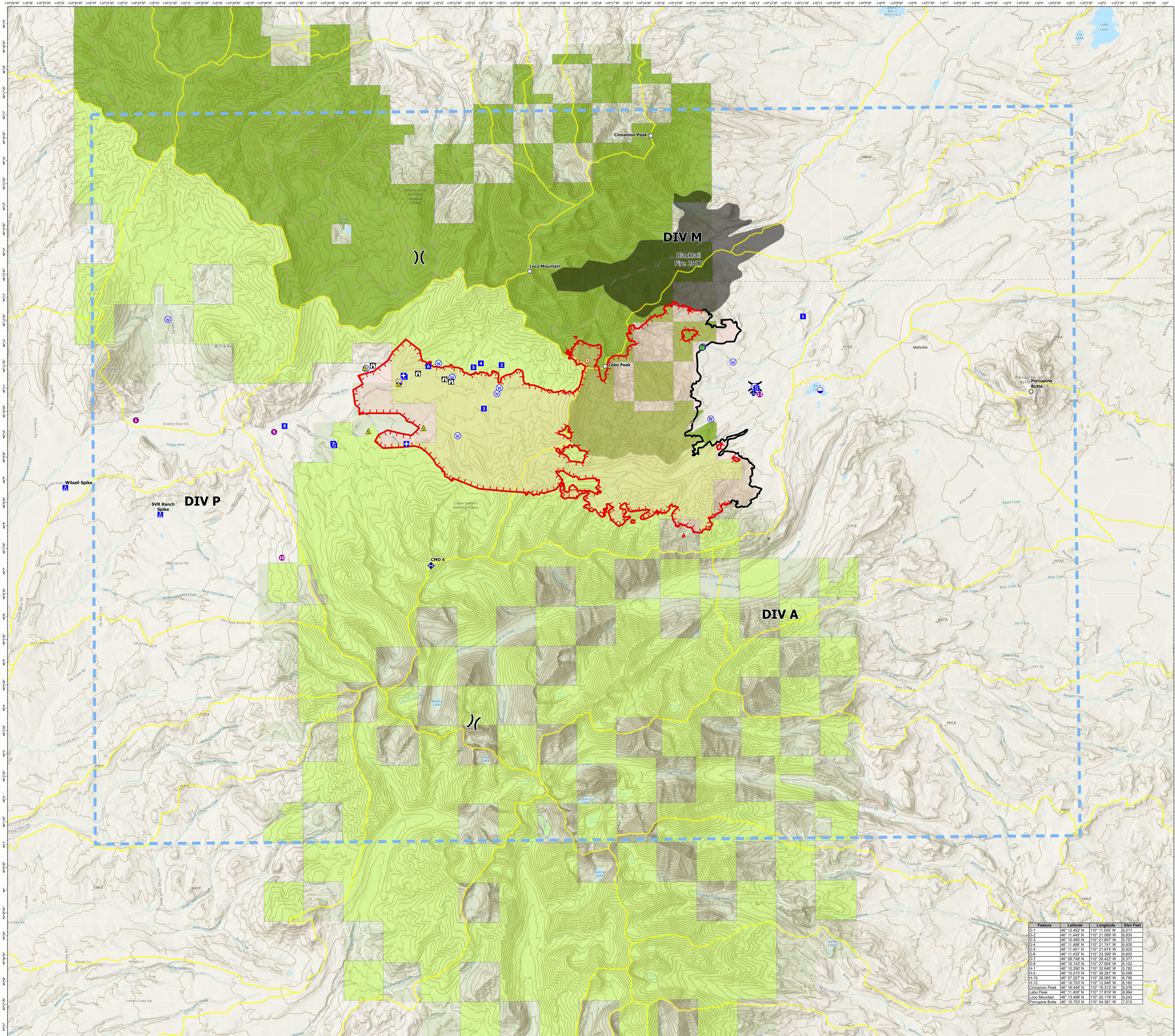


American Fork Fire

AirOps Topo Map
 MT-HLF-5087
 18,997 Acres
 8/6/21 @ 1515
Operational Shift:
8/7/21



- Dip Site
- Helispot
- ✕ Division Break
- ⊠ Medical
- Drop Point
- Camp
- Staging Area
- ⊠ Lookout
- Hot Spot - Spot Fire
- Other
- Landmark
- Stream Crossing
- ◆ Mobile Weather Unit
- ◆ Repeater
- ▲ Safety Zone
- ▲ Hazard
- Water Source
- Temporary Flight Restriction
- Fire Edge
- Contained Line
- Wildfire Daily Fire Perimeter
- Trails
- Inventoried Roadless Area
- Fire History Polygon
- Watershed boundary
- Custer Gallatin NF
- Helena-Lewis and Clark NF



Created By: SA Red Team
 Date Exported: 8/6/2021 8:35 PM

Feature	Latitude	Longitude	Elev Feet
D-1	46° 12.452' N	110° 11.555' W	6,017
D-2	46° 11.442' N	110° 21.652' W	6,850
D-3	46° 10.432' N	110° 31.749' W	6,707
D-4	46° 11.442' N	110° 21.741' W	6,926
D-5	46° 11.451' N	110° 21.974' W	6,925
D-6	46° 11.452' N	110° 23.389' W	6,602
D-7	46° 09.748' N	110° 26.452' W	6,374
D-8	46° 10.143' N	110° 27.954' W	6,100
H-1	46° 07.292' N	110° 32.448' W	6,756
H-5	46° 10.015' N	110° 28.287' W	6,099
H-10	46° 07.292' N	110° 32.448' W	6,756
H-12	46° 10.753' N	110° 12.246' W	6,160
Cinnamon Peak	46° 18.448' N	110° 18.313' W	8,578
Loco Mountain	46° 14.602' N	110° 17.838' W	6,964
Loco Peak	46° 13.498' N	110° 20.179' W	6,243
Porcupine Butte	46° 10.753' N	110° 04.381' W	7,015