

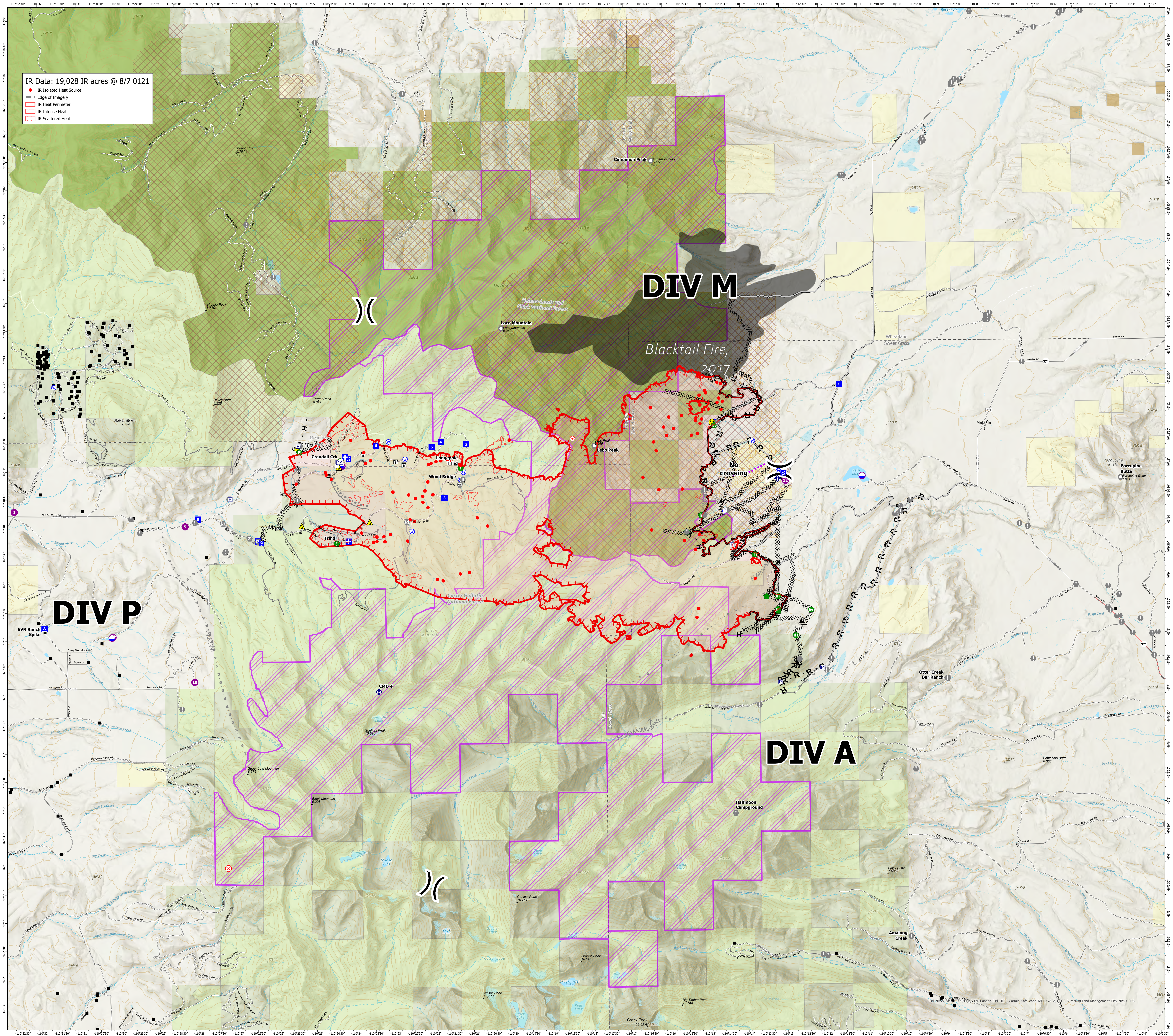
American Fork Fire

Operations IR Map

MT-HLF-5087

18,997 GIS Acres @ 1515 8/6/2021

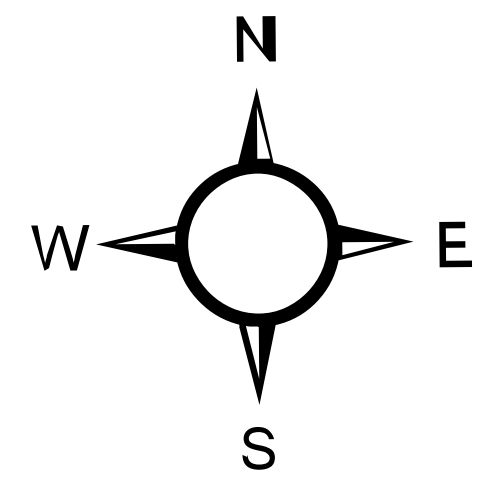
Operational Shift: 8/7/2021



IR Data: 19,028 IR acres @ 8/7 0121

- IR Isolated Heat Source
- Edge of Imagery
- IR Heat Perimeter
- IR Intense Heat
- IR Scattered Heat

- Pump
- Label Point
- Dip Site
- Helispot
- Division Break
- Medical
- Drop Point
- Camp
- Staging Area
- Lookout
- Hot Spot - Spot Fire
- Fire Origin
- Value at Risk
- Other
- Landmark
- Gate
- Bridge
- Structure Wrap
- Stream Crossing
- Resource Location
- Repair Point
- Fence - Cut/Damaged
- Dozer Push
- Mobile Weather Unit
- Repeater
- Safety Zone
- Hazard
- Water Source
- Structure - State Data
- Gap: Summit
- Completed Dozer Line
- Completed Fuel Break
- Completed Hand Line
- Completed Road as Line
- Planned Burnout
- Planned Dozer Line
- Planned Fuel Break
- Planned Mixed Construction Line
- Planned Road as Line
- Planned Secondary Line
- Access or Improved Road
- Route
- Fire Edge
- Contained Line
- Secondary Highway
- Paved Roads
- Dirt (Not Paved)
- Fire History Polygon
- County Boundary
- Other Fed Government
- State MT
- Custer Gallatin National Forest
- Helmets Levels and Clark National Forest
- Inventoried Roadless Areas
- Pasture
- Range Allotments



0 2 4 Miles