

American Fork Fire

Pilot Map

MT-HLF-5087

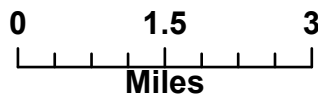
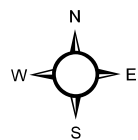
18,997 GIS Acres

8/6/21 @ 1515

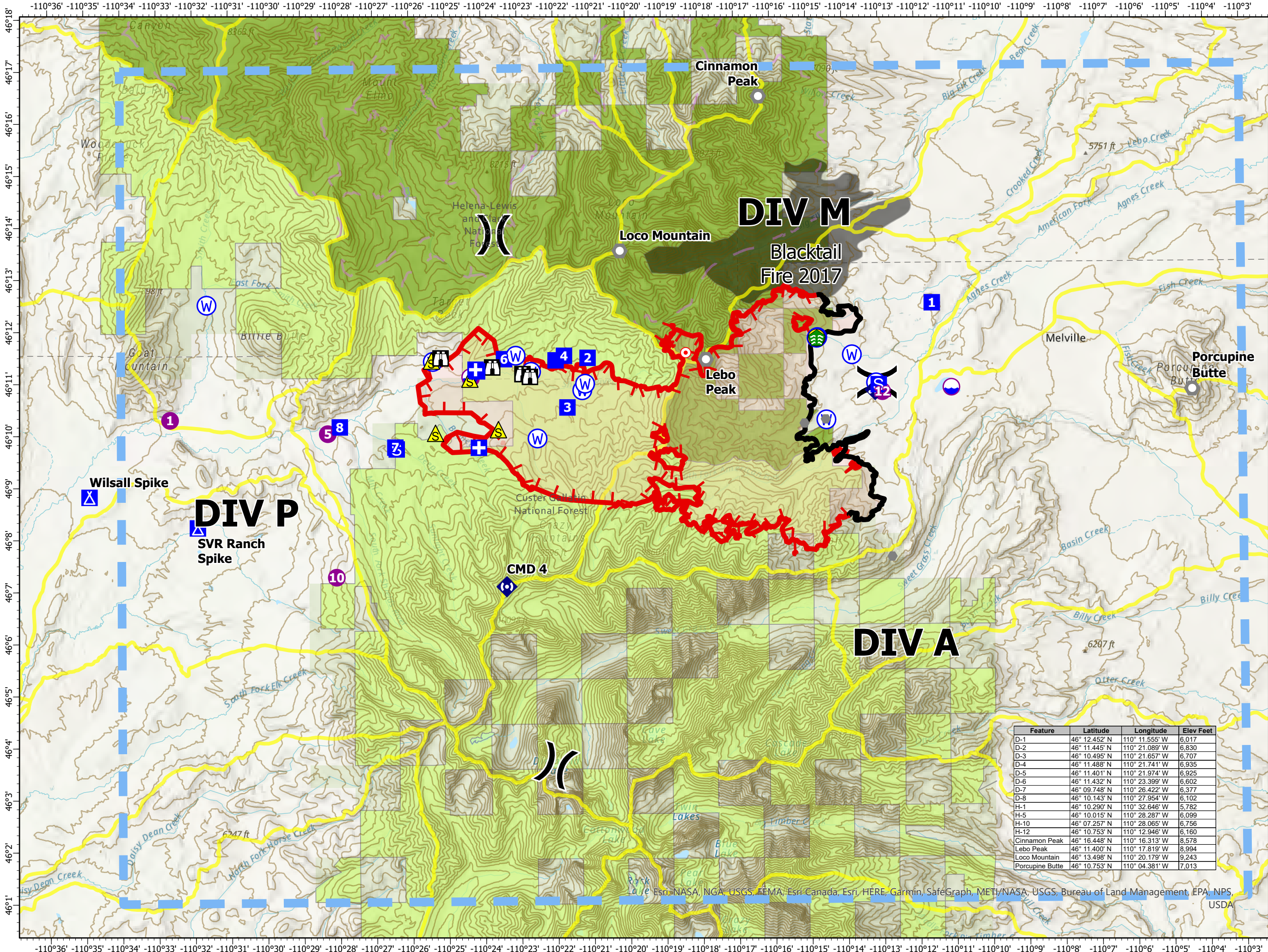
Operational Shift:
8/7/21



- Dip Site
- Helispot
- Division Break
- Medical
- Drop Point
- Camp
- Staging Area
- Lookout
- Hot Spot - Spot Fire
- Other
- Landmark
- Stream Crossing
- Mobile Weather Unit
- Repeater
- Safety Zone
- Hazard
- Water Source
- Temporary Flight Restriction
- Fire Edge
- Contained Line
- Wildfire Daily Fire Perimeter
- Inventoried Roadless Area
- Trails
- Fire History Polygon
- Watershed boundary
- Custer Gallatin NF
- Helena-Lewis and Clark NF



Created By: SA Red Team
Date Exported: 8/6/2021 8:41 PM



Feature	Latitude	Longitude	Elev Feet
D-1	46° 12.452' N	110° 11.555' W	6,017
D-2	46° 11.445' N	110° 21.089' W	6,830
D-3	46° 10.495' N	110° 21.657' W	6,707
D-4	46° 11.488' N	110° 21.741' W	6,935
D-5	46° 11.401' N	110° 21.974' W	6,925
D-6	46° 11.432' N	110° 23.399' W	6,602
D-7	46° 09.748' N	110° 26.422' W	6,377
D-8	46° 10.143' N	110° 27.954' W	6,102
H-1	46° 10.290' N	110° 32.646' W	5,782
H-5	46° 10.015' N	110° 28.287' W	6,099
H-10	46° 07.257' N	110° 28.065' W	6,756
H-12	46° 10.753' N	110° 12.946' W	6,160
Cinnamon Peak	46° 16.448' N	110° 16.313' W	8,578
Lebo Peak	46° 11.400' N	110° 17.819' W	8,994
Loco Mountain	46° 13.498' N	110° 20.179' W	9,243
Porcupine Butte	46° 10.753' N	110° 04.381' W	7,013