

American Fork Fire

Pilot Map

MT-HLF-5087

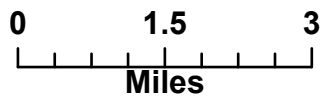
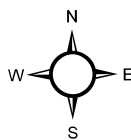
18,997 GIS Acres

8/6/21 @ 1515

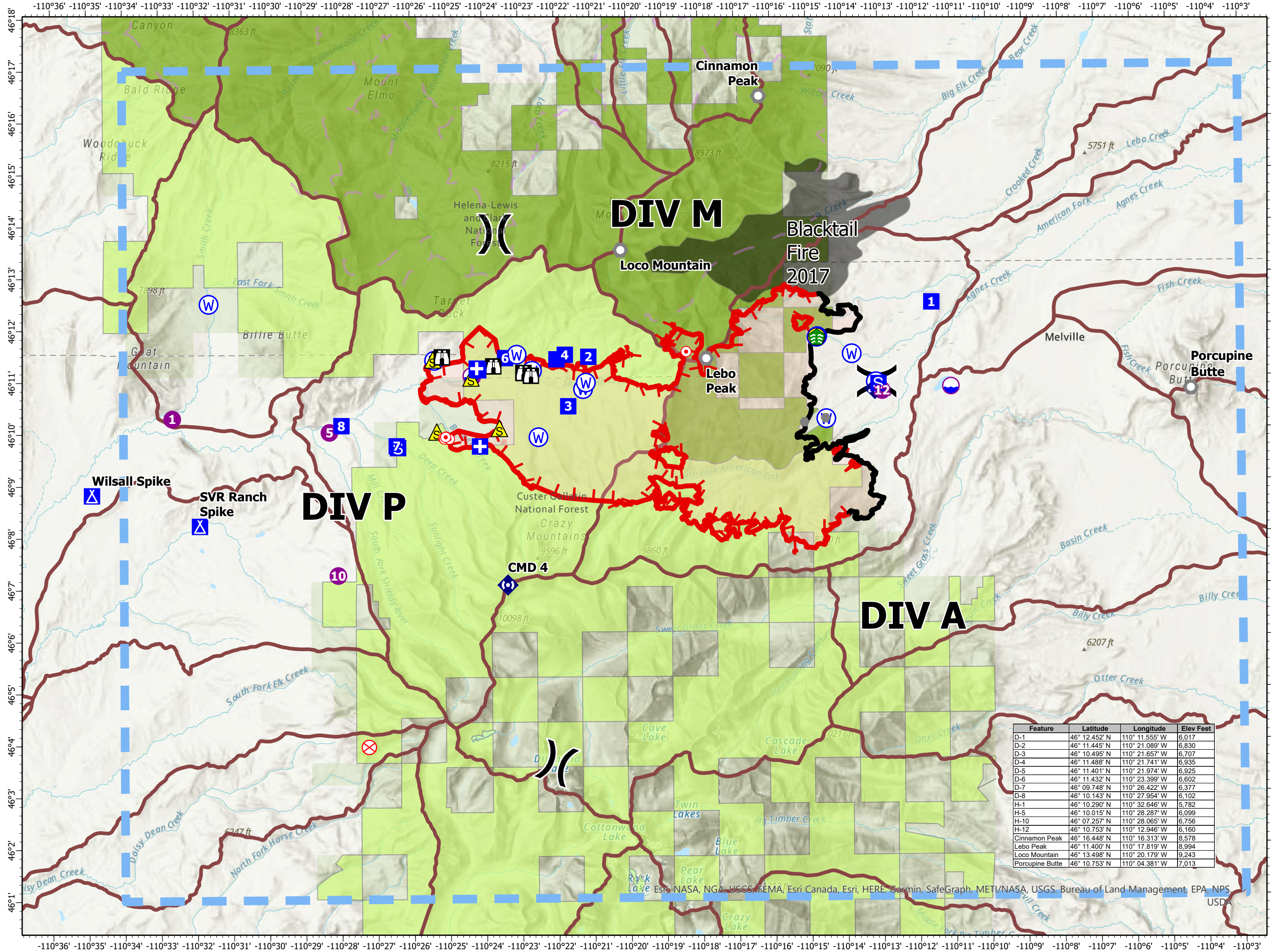
Operational Shift:
8/7/21



- Dip Site
- Helispot
- Division Break
- Medical
- Drop Point
- Camp
- Staging Area
- Lookout
- Hot Spot - Spot Fire
- Fire Origin
- Other
- Landmark
- Stream Crossing
- Mobile Weather Unit
- Repeater
- Safety Zone
- Hazard
- Water Source
- Temporary Flight Restriction
- Fire Edge
- Contained Line
- Wildfire Daily Fire Perimeter
- Inventoried Roadless Area
- Trails
- Fire History Polygon
- Watershed boundary
- Custer Gallatin NF
- Helena-Lewis and Clark NF



Created By: SA Red Team
Date Exported: 8/7/2021 10:52 PM



| Feature | Latitude | Longitude | Elev Feet |
|-----------------|---------------|----------------|-----------|
| D-1 | 46° 12.452' N | 110° 11.555' W | 6,017 |
| D-2 | 46° 11.445' N | 110° 21.089' W | 6,830 |
| D-3 | 46° 10.495' N | 110° 21.657' W | 6,707 |
| D-4 | 46° 11.488' N | 110° 21.741' W | 6,935 |
| D-5 | 46° 11.401' N | 110° 21.974' W | 6,925 |
| D-6 | 46° 11.432' N | 110° 23.399' W | 6,602 |
| D-7 | 46° 09.748' N | 110° 26.422' W | 6,377 |
| D-8 | 46° 10.143' N | 110° 27.954' W | 6,102 |
| H-1 | 46° 10.290' N | 110° 32.646' W | 5,782 |
| H-5 | 46° 10.015' N | 110° 28.287' W | 6,099 |
| H-10 | 46° 07.257' N | 110° 28.065' W | 6,756 |
| H-12 | 46° 10.753' N | 110° 12.946' W | 6,160 |
| Cinnamon Peak | 46° 16.448' N | 110° 16.313' W | 8,578 |
| Lebo Peak | 46° 11.400' N | 110° 17.819' W | 8,994 |
| Loco Mountain | 46° 13.498' N | 110° 20.179' W | 9,243 |
| Porcupine Butte | 46° 10.753' N | 110° 04.381' W | 7,013 |