

American Fork

Pilot Map

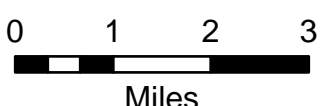
MT-HLF-5087

19,028 GIS Acres 8/8/21 @ 0137

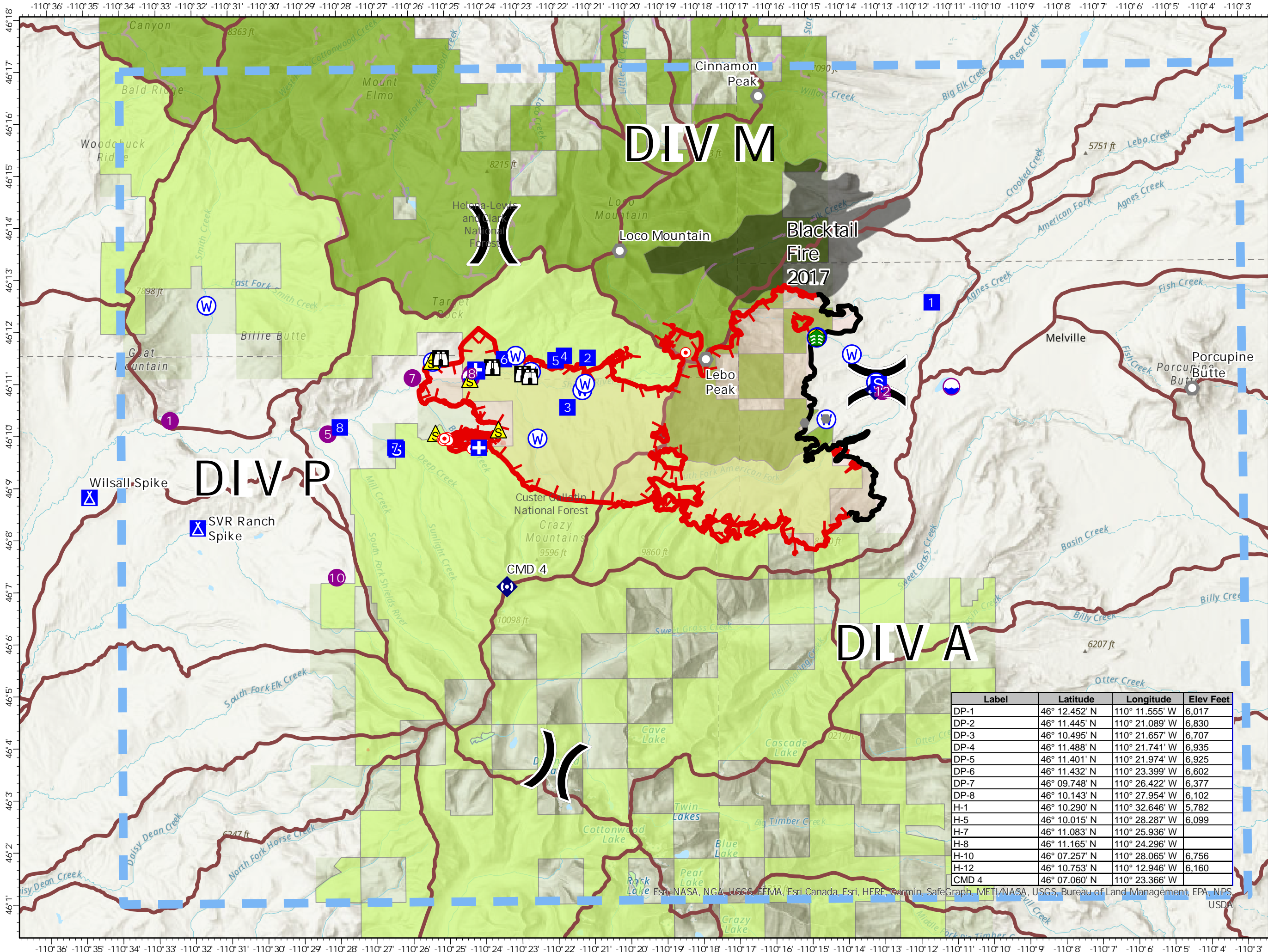
Operational Shift
8/9/21



- Dip Site
- Helispot
- Division Break
- Medical
- Drop Point
- Camp
- Staging Area
- Lookout
- Hot Spot - Spot Fire
- Other
- Landmark
- Stream Crossing
- Mobile Weather Unit
- Repeater
- Safety Zone
- Hazard
- Water Source
- Temporary Flight Restriction
- Fire Edge
- Contained Line
- Wildfire Daily Fire Perimeter
- Inventoried Roadless Area
- Trails
- Fire History Polygon
- Watershed boundary
- Custer Gallatin NF
- Helena-Lewis and Clark NF



Created By: M Haunsperger
08/08/21 @ 2214
Acres from IR Data and Field Reports
North American 1983 Datum Lat/Long Grid



Label	Latitude	Longitude	Elev Feet
DP-1	46° 12.452' N	110° 11.555' W	6,017
DP-2	46° 11.445' N	110° 21.089' W	6,830
DP-3	46° 10.495' N	110° 21.657' W	6,707
DP-4	46° 11.488' N	110° 21.741' W	6,935
DP-5	46° 11.401' N	110° 21.974' W	6,925
DP-6	46° 11.432' N	110° 23.399' W	6,602
DP-7	46° 09.748' N	110° 26.422' W	6,377
DP-8	46° 10.143' N	110° 27.954' W	6,102
H-1	46° 10.290' N	110° 32.646' W	5,782
H-5	46° 10.015' N	110° 28.287' W	6,099
H-7	46° 11.083' N	110° 25.936' W	
H-8	46° 11.165' N	110° 24.296' W	
H-10	46° 07.257' N	110° 28.065' W	6,756
H-12	46° 10.753' N	110° 12.946' W	6,160
CMD 4	46° 07.060' N	110° 23.366' W	

USDA