

# American Fork Fire

MT-HLF-5087

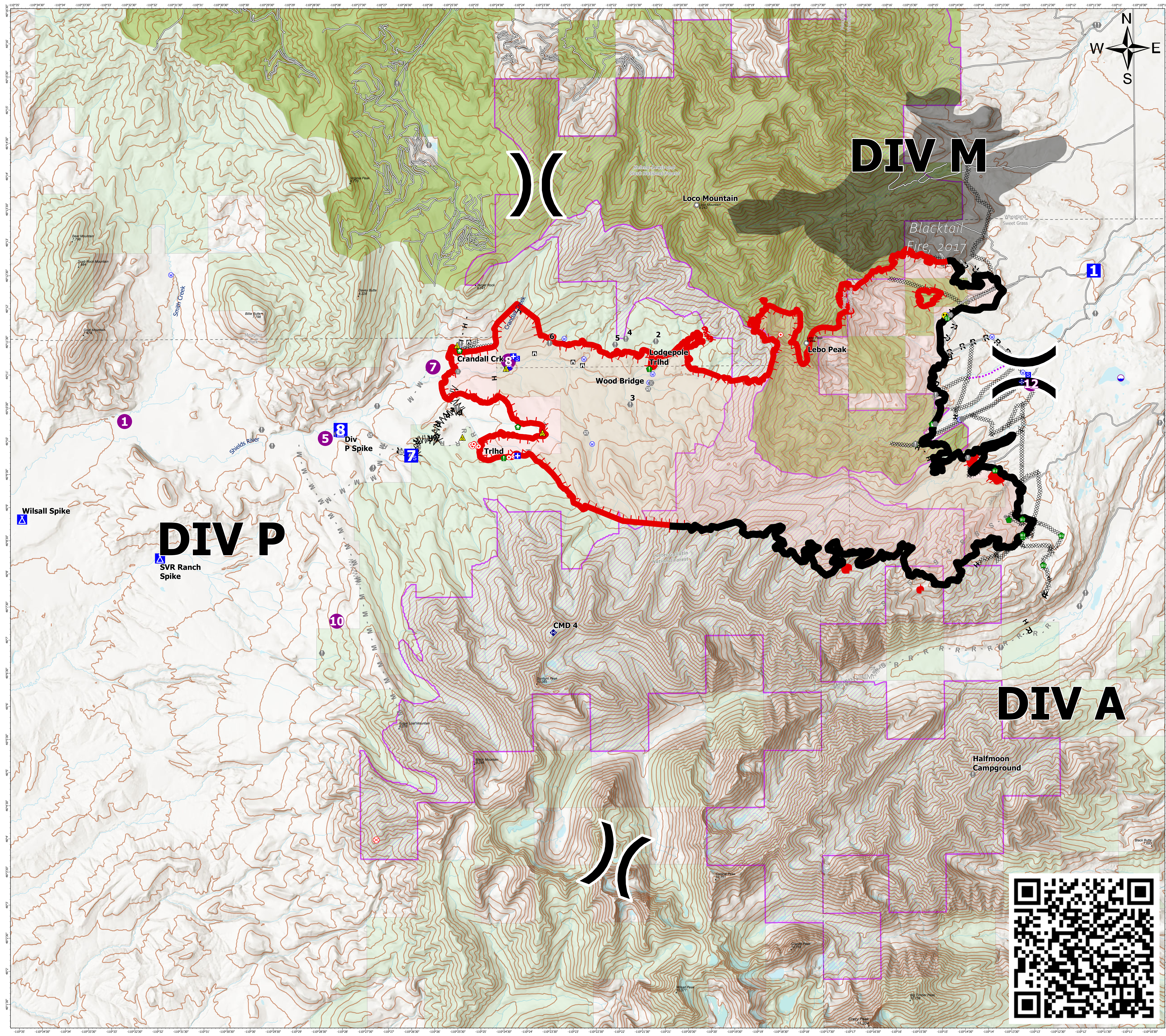
## Briefing Map

Approx. 19,028 GIS Acres @ 8/8 0137

Operational Shift  
8/11/2021



- ⊗ Completed Dozer Line
- ∩ Completed Fuel Break
- H Completed Hand Line
- M Completed Mixed Construction Line
- R Completed Road as Line
- ⊗ Planned Dozer Line
- ∩ Planned Fuel Break
- M Planned Mixed Construction Line
- R Planned Road as Line
- S Planned Secondary Line
- Access or Improved Road
- Other
- Route
- Fire Edge
- Contained Line
- Wildfire Daily Fire Perimeter
- Dip Site
- Helispot
- × Division Break
- Medical
- Drop Point
- Camp
- Staging Area
- Lookout
- Hot Spot - Spot Fire
- Fire Origin
- Value at Risk
- Other
- Landmark
- Gate
- Bridge
- Structure Wrap
- Stream Crossing
- Resource Location
- Repair Point
- Fence - Cut/Damaged
- Dozer Push
- Mobile Weather Unit
- Repeater
- Safety Zone
- Hazard
- Water Source
- Gap; Summit
- Fire History Polygon
- County Boundary
- Inventoried Roadless Areas
- Custer Gallatin National Forest
- Helena-Lewis and Clark National Forest



# DIV P

# DIV M

# DIV A

