

# American Fork Fire

## MT-HLF-5087

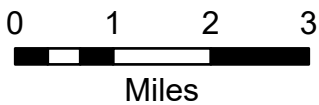
### Pilot Map

Approx. 19,028 GIS Acres @ 8/8 0137

Operational Shift  
8/11/21



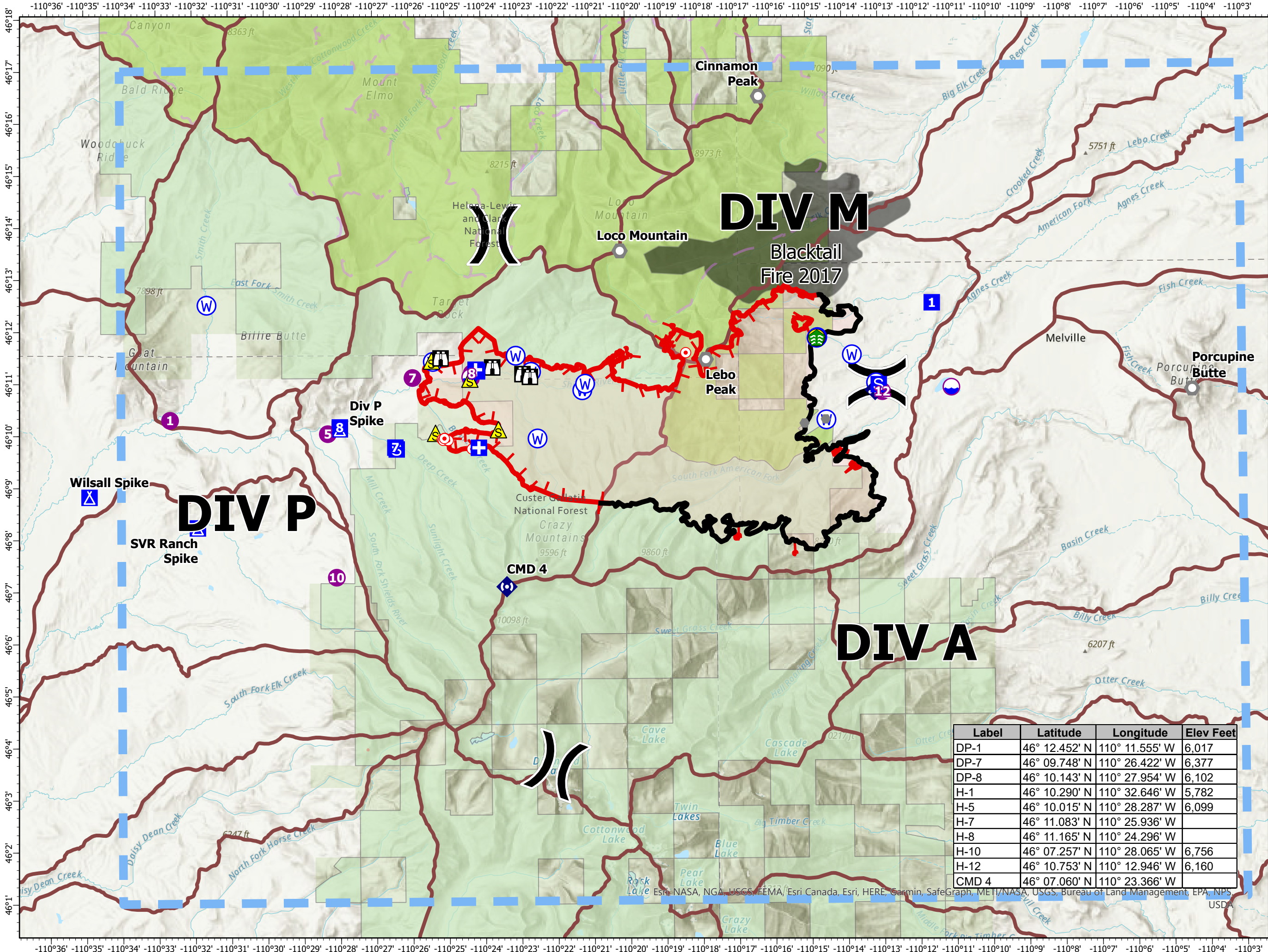
- Dip Site
- Helispot
- Division Break
- Medical
- Drop Point
- Camp
- Staging Area
- Lookout
- Hot Spot - Spot Fire
- Other
- Landmark
- Stream Crossing
- Mobile Weather Unit
- Repeater
- Safety Zone
- Hazard
- Water Source
- Temporary Flight Restriction
- Fire Edge
- Contained Line
- Wildfire Daily Fire Perimeter
- Inventoried Roadless Area
- Trails
- Fire History Polygon
- Watershed boundary
- Custer Gallatin NF
- Helena-Lewis and Clark NF



SA Red Team GIS

Date Exported: 8/10/2021 9:09 PM

North American 1983 Datum. LatLong Grid



Label	Latitude	Longitude	Elev Feet
DP-1	46° 12.452' N	110° 11.555' W	6,017
DP-7	46° 09.748' N	110° 26.422' W	6,377
DP-8	46° 10.143' N	110° 27.954' W	6,102
H-1	46° 10.290' N	110° 32.646' W	5,782
H-5	46° 10.015' N	110° 28.287' W	6,099
H-7	46° 11.083' N	110° 25.936' W	
H-8	46° 11.165' N	110° 24.296' W	
H-10	46° 07.257' N	110° 28.065' W	6,756
H-12	46° 10.753' N	110° 12.946' W	6,160
CMD 4	46° 07.060' N	110° 23.366' W	

ESRI, NASA, NGA, USGS, FEMA, Esri Canada, Esri, HERE, Garmin, SafeGraph, METI/NASA, USGS, Bureau of Land Management, EPA, NPS, USDA