

American Fork Fire

MT-HLF-5087

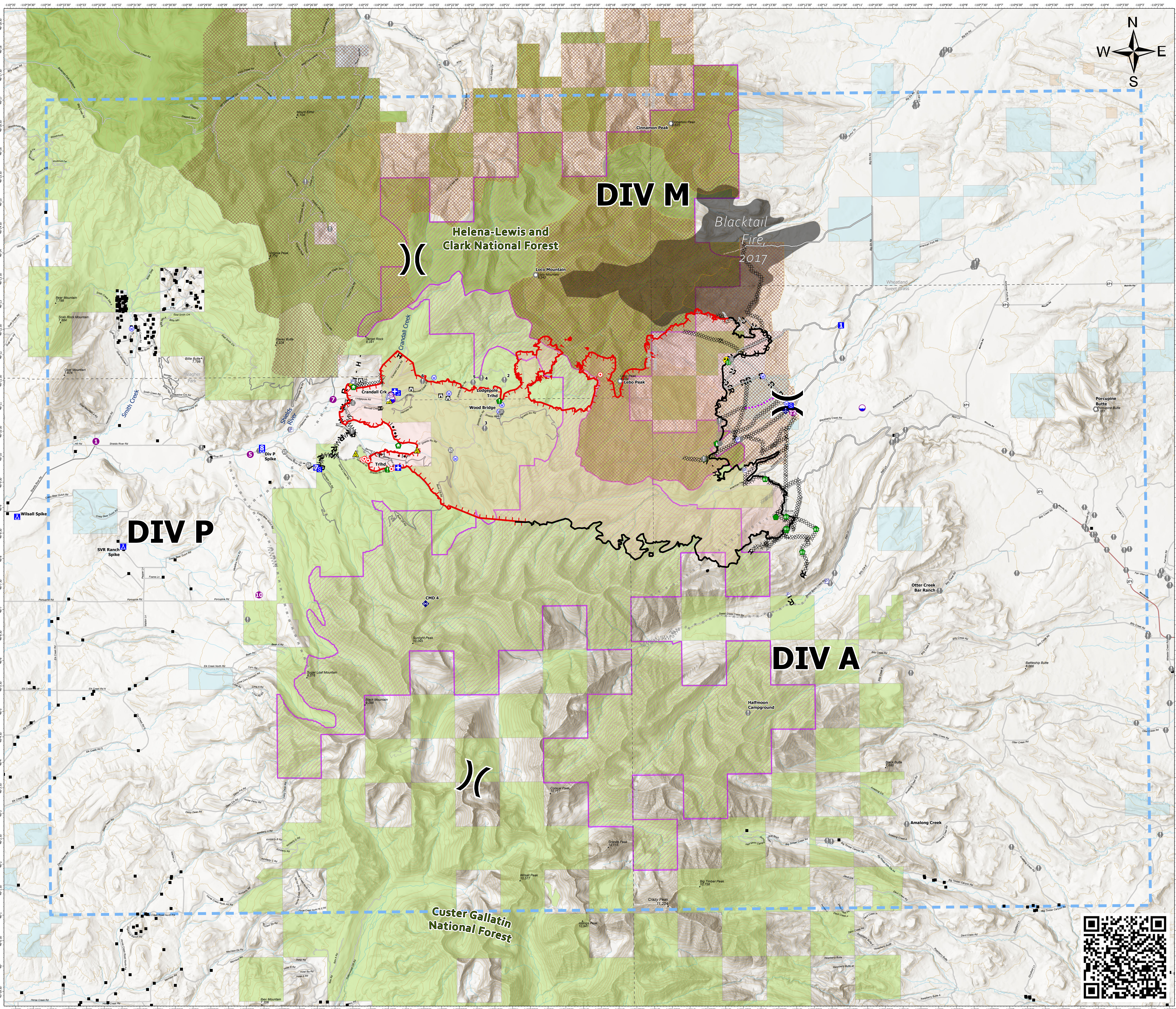
Operations Map

Approx. 19,582 GIS Acres
@ 8/11/2021 1109

Operational Shift
8/12/2021



- Dip Site
- Helispot
- ✕ Division Break
- Medical
- Drop Point
- Camp
- Staging Area
- Lookout
- Hot Spot - Spot Fire
- Value at Risk
- Other
- Landmark
- Gate
- Bridge
- Structure Wrap
- Stream Crossing
- Resource Location
- Repair Point
- Fence - Cut/Damaged
- Dozer Push
- Mobile Weather Unit
- Repeater
- Safety Zone
- Hazard
- Water Source
- Completed Burnout
- ✕ Completed Dozer Line
- ✕ Completed Fuel Break
- ✕ Completed Hand Line
- ✕ Completed Mixed Construction Line
- ✕ Completed Road as Line
- Planned Dozer Line
- ✕ Planned Fuel Break
- ✕ Planned Mixed Construction Line
- ✕ Planned Road as Line
- Planned Secondary Line
- Access or Improved Road
- Other
- Route
- Temporary Flight Restriction
- Fire Edge
- Contained Line
- Wildfire Daily Fire Perimeter
- Pump
- Label Point
- Structure- State Data
- Gap; Summit
- ◇ Range Allotments
- Pasture
- Secondary Highway
- Paved Roads
- Dirt (Not Paved)
- Fire History Polygon
- NHD Flowline
- 200ft Contour
- CountyBoundary
- Inventoried Roadless Areas
- Other Fed Government
- State MT
- Custer Gallatin National Forest
- Helena-Lewis and Clark National Forest



MMH
Date Exported: 8/11/2021 9:46 PM
North American 1983 Datum, LatLong Grid

