

American Fork Fire

MT-HLF-5087

Briefing Map

Approx. 19,582 GIS Acres

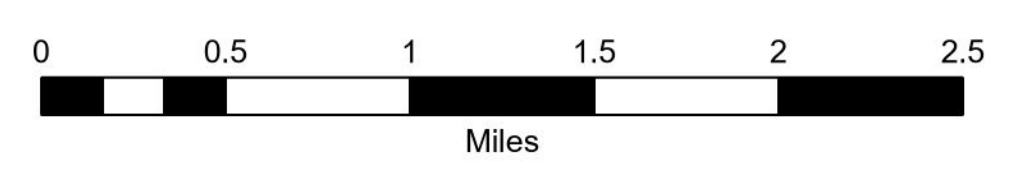
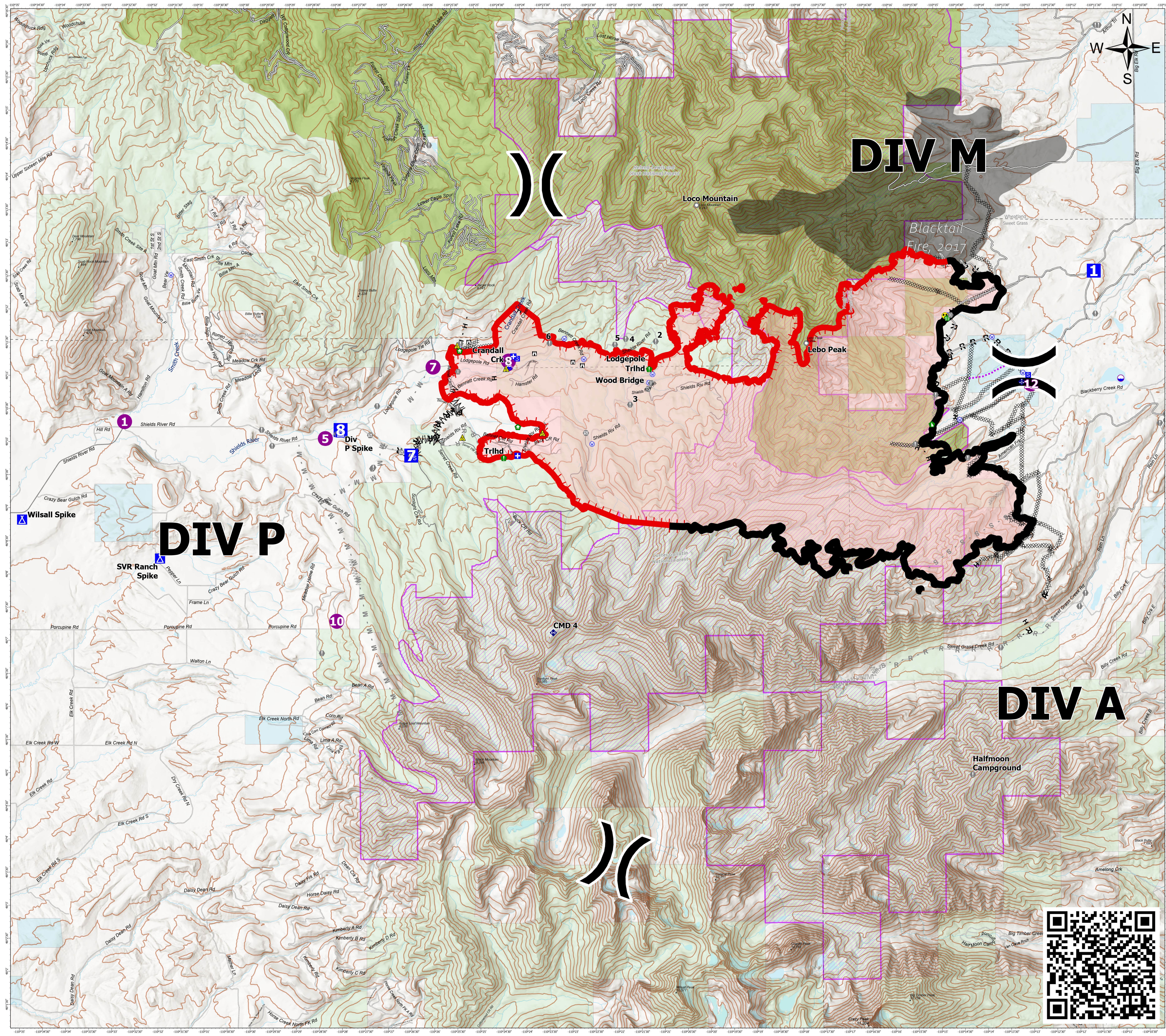
@ 8/11/2021 1109

Operational Shift

8/12/2021



- Completed Dozer Line
- Completed Fuel Break
- Completed Hand Line
- Completed Mixed Construction Line
- Completed Road as Line
- Planned Dozer Line
- Planned Fuel Break
- Planned Mixed Construction Line
- Planned Road as Line
- Planned Secondary Line
- Access or Improved Road
- Other
- Route
- Fire Edge
- Contained Line
- Wildfire Daily Fire Perimeter
- Dip Site
- Helispot
- Division Break
- Medical
- Drop Point
- Camp
- Staging Area
- Lookout
- Value at Risk
- Landmark
- Gate
- Bridge
- Structure Wrap
- Stream Crossing
- Resource Location
- Dozer Push
- Mobile Weather Unit
- Repeater
- Safety Zone
- Hazard
- Water Source
- Gap; Summit
- Fire History Polygon
- County Boundary
- Inventoried Roadless Areas
- State MT
- Custer Gallatin National Forest
- Helena-Lewis and Clark National Forest



MMH
Date Exported: 8/11/2021 8:39 PM
North American 1983 Datum. LatLong Grid

