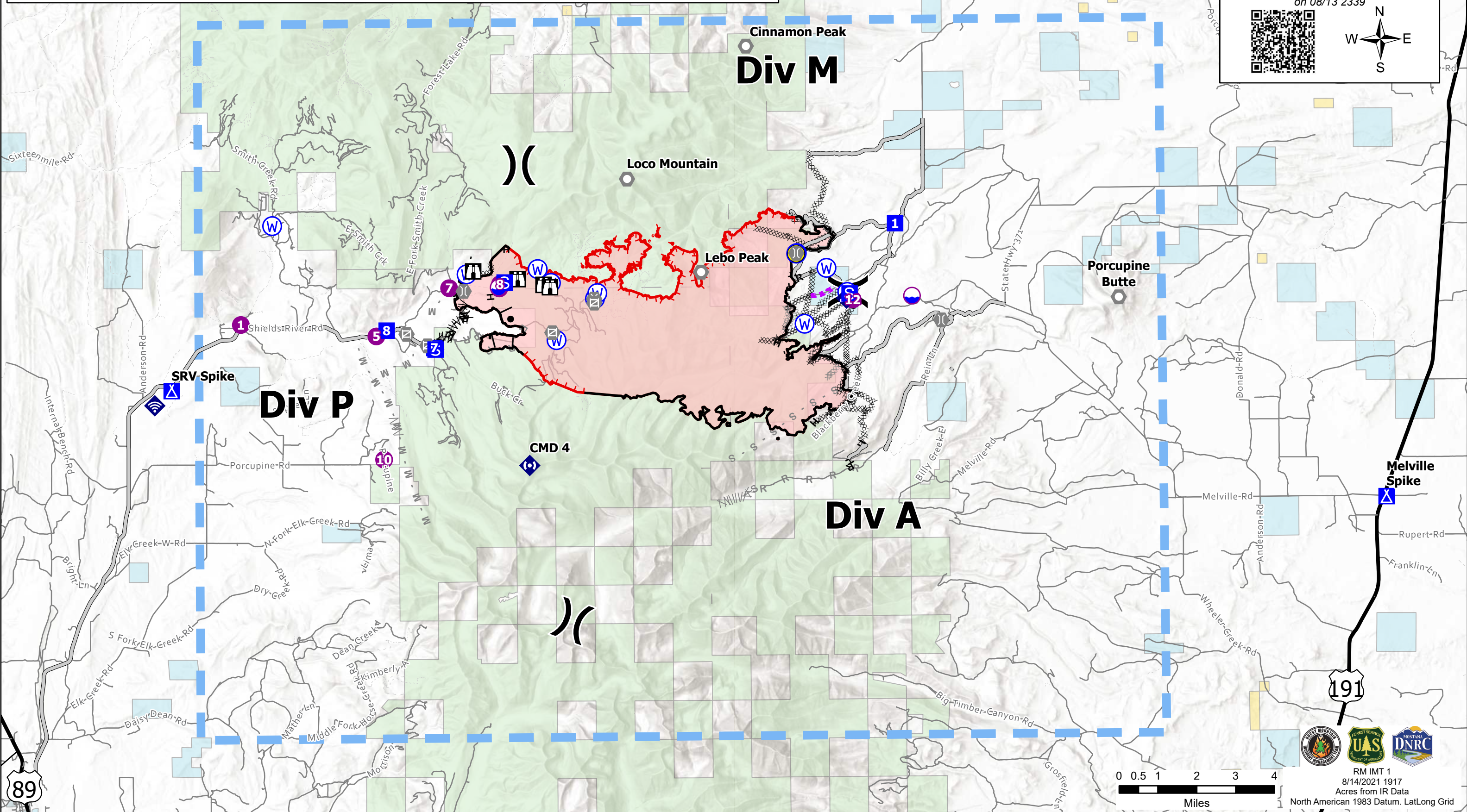


- | | | | | | |
|------------------|-----------------------|-------------------------------------|-----------------------------------|---------------------------------|--------------------------------|
| ○ Dip Site | ○ Landmark | ○ Water Source | ⊗ Planned Dozer Line | — Route | — Local Road |
| ● Helispot | ○ Gate | — Completed Burnout | ∕ Planned Fuel Break | ■ Temporary Flight Restriction | --- 4WD |
| ⌘ Division Break | ● Bridge | ⊗ Completed Dozer Line | M Planned Mixed Construction Line | — Fire Edge | ■ Local Government |
| ■ Drop Point | ◆ Mobile Weather Unit | ∕ Completed Fuel Break | R Planned Road as Line | — Contained Line | ■ State Government |
| ■ Camp | ◆ Internet Access | H Completed Hand Line | S Planned Secondary Line | — Wildfire Daily Fire Perimeter | ■ US Bureau of Land Management |
| ■ Staging Area | ◆ Repeater | M Completed Mixed Construction Line | — Access or Improved Road | — Major Road | ■ US Forest Service |
| ■ Lookout | ● Hazard | R Completed Road as Line | — Other | — Local Connecting Road | |

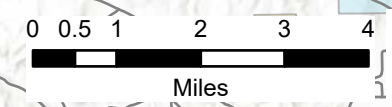
IAP Map
American Fork
 MT-HLF-005087
 08/15/2021
 Approx. 19,749 GIS Acres
 on 08/13 2339





89

191



RM IMT 1
 8/14/2021 1917
 Acres from IR Data
 North American 1983 Datum. LatLong Grid