

American Fork Fire

MT-HLF-005087

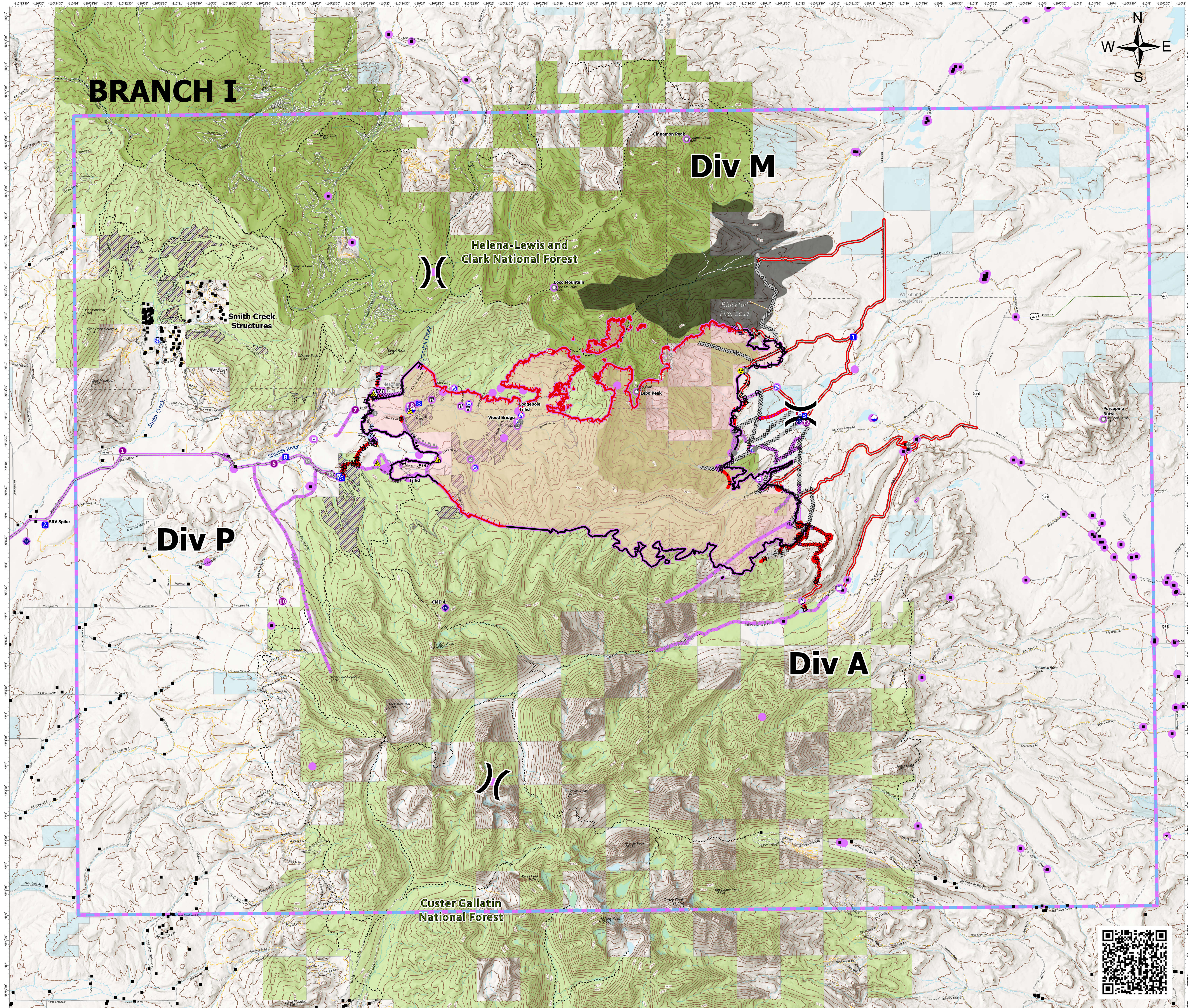
Repair Map

Approx. 20,187 GIS Acres
@ 8/14/2021 2204 hrs

Operational Shift
8/16/2021



- Gap; Summit
- Structure- State Data
- Dip Site
- Helispot
- Division Break
- Drop Point
- Camp
- Staging Area
- Lookout
- Other
- Landmark
- Gate
- Bridge
- Mobile Weather Unit
- Internet Access
- Repeater
- Safety Zone
- Hazard
- Water Source
- Pump
- Completed Burnout
- Completed Dozer Line
- Completed Fuel Break
- Completed Hand Line
- Completed Mixed Construction Line
- Completed Road as Line
- Planned Burnout
- Planned Dozer Line
- Planned Fuel Break
- Planned Mixed Construction Line
- Planned Road as Line
- Planned Secondary Line
- Access or Improved Road
- Other
- Route
- Temporary Flight Restriction
- Fire Edge
- Contained Line
- Wildfire Daily Fire Perimeter
- Repair Status Point
 - Completed - Inspected
 - In Use - Fire Management
 - Completed - Ready for Inspection
 - In Progress
 - Repair Needed
 - No Repair Needed
 - Other - See Comments
 - Unknown
- Repair Status Accountable Property
 - Completed - Inspected
 - In Use - Fire Management
 - Completed - Ready for Inspection
 - In Progress
 - Repair Needed
 - No Repair Needed
 - Other - See Comments
 - Unknown
- Repair Status Line
 - Completed - Inspected
 - In Use - Fire Management
 - Completed - Ready for Inspection
 - In Progress
 - Repair Needed
 - No Repair Needed
 - Other - See Comments
 - Unknown
- Secondary Highway
- Paved Roads
- Dirt (Not Paved)
- US Route Not Paved
- Private Roads
- Trails
- Stock Trails
- 200ft Contour
- Stream
- Waterbody
- Fuels Treatment
- Fire History Polygon
- County Boundary
- Other Fed Government
- State MT
- Custer Gallatin National Forest
- Helena-Lewis and Clark National Forest



BRANCH I

Div M

Div P

Div A

Helena-Lewis and Clark National Forest

Custer Gallatin National Forest

Smith Creek Structures

Blacktail Fire, 2017

0 0.5 1 2 3 Miles

