

# American Fork Fire

MT-HLF-005087

## Operations Map

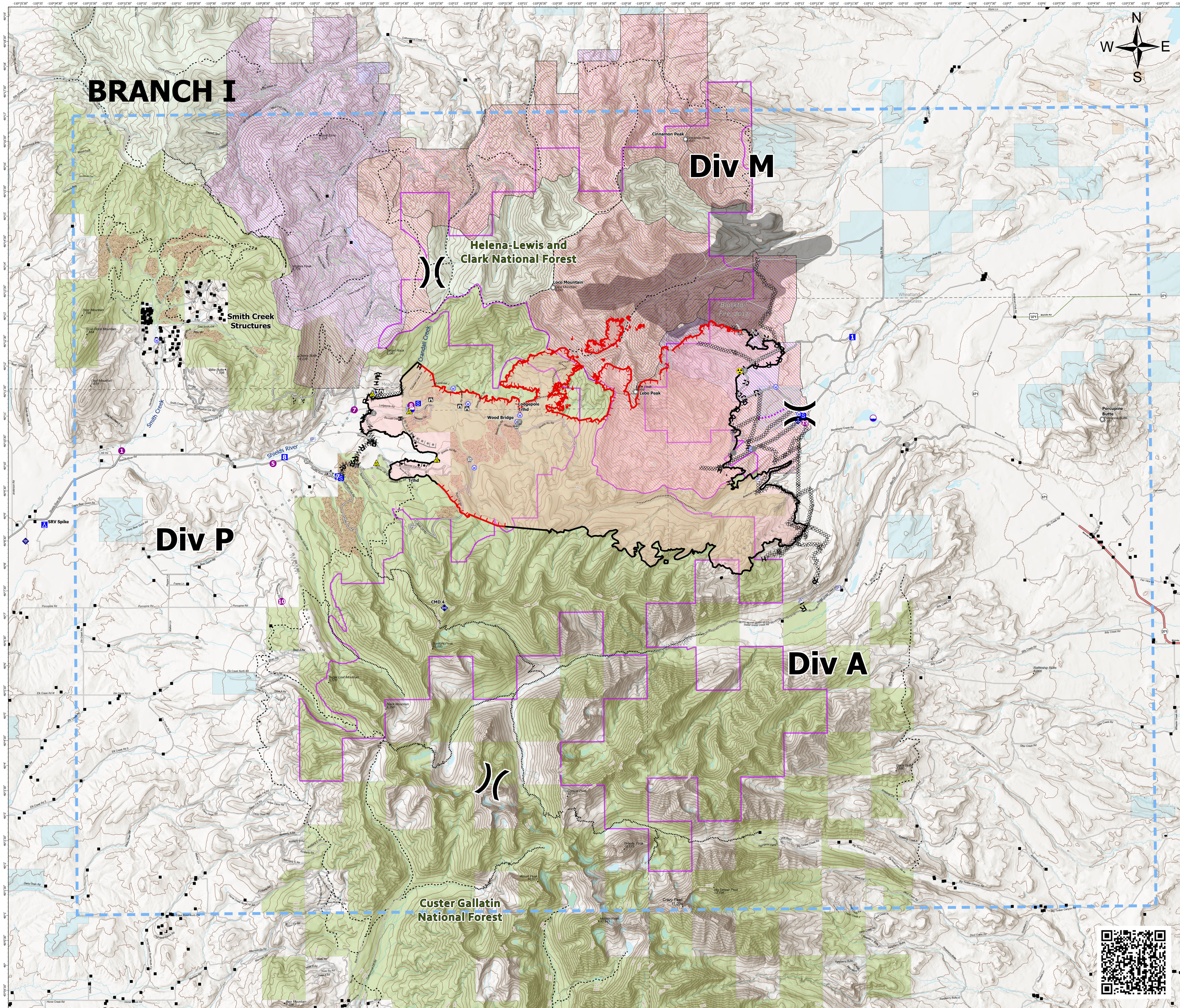
with Pasture Lands & Range Allotments

Approx. 20,187 GIS Acres  
@ 8/14/2021 2204 hrs

**Operational Shift**  
**8/16/2021**



- ▲ Gap; Summit
- Structure- State Data
- ⊠ Pump
- ⊠ Completed Burnout
- ⊠ Completed Dozer Line
- ⊠ Completed Fuel Break
- ⊠ Completed Hand Line
- ⊠ Completed Mixed Construction Line
- ⊠ Completed Road as Line
- ⊠ Planned Burnout
- ⊠ Planned Dozer Line
- ⊠ Planned Fuel Break
- ⊠ Planned Mixed Construction Line
- ⊠ Planned Road as Line
- ⊠ Planned Secondary Line
- Access or Improved Road
- Other
- Route
- Temporary Flight Restriction
- Fire Edge
- Contained Line
- Wildfire Daily Fire Perimeter
- Secondary Highway
- Paved Roads
- Dirt (Not Paved)
- US Route Not Paved
- Dip Site
- Helispot
- ⊠ Division Break
- ⊠ Drop Point
- ⊠ Camp
- ⊠ Staging Area
- ⊠ Lookout
- Other
- Landmark
- Gate
- Bridge
- Mobile Weather Unit
- Internet Access
- Repeater
- Safety Zone
- Hazard
- Water Source
- Trails
- Stock Trails
- 200ft Contour
- Stream
- Waterbody
- Fuels Treatment
- Pasture
- Range Allotments
- Inventoried Roadless Areas
- Fire History Polygon
- County Boundary
- Other Fed Government
- State MT
- Custer Gallatin National Forest
- Helena-Lewis and Clark National Forest



### BRANCH I

### Div M

### Helena-Lewis and Clark National Forest

### Div P

### Div A

### Custer Gallatin National Forest



RMIMT Type I GIS  
Date Exported: 8/15/2021 9:45 PM  
North American 1983 Datum, LatLong Grid

