

# American Fork Fire

MT-HLF-005087

## Operations Map

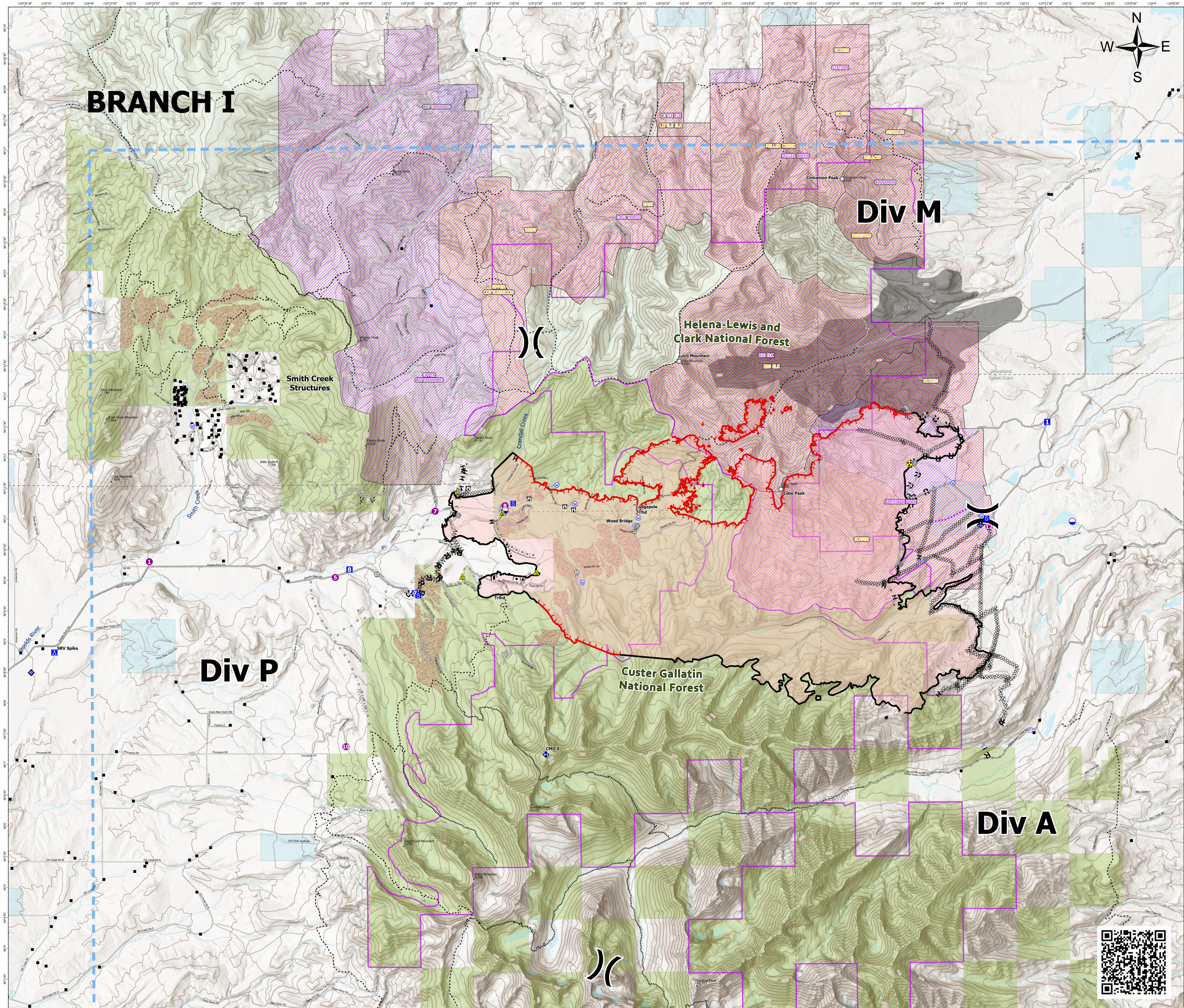
with Pasture Lands & Range Allotments

Approx. 20,187 GIS Acres  
@ 8/14/2021 2204 hrs

**Operational Shift**  
**8/16/2021**



- Gap; Summit
- Structure- State Data
- ⊕ Pump
- ⊔ Completed Burnout
- ⊗ Completed Dozer Line
- ⊖ Completed Fuel Break
- ⊕ Completed Hand Line
- ⊖ Completed Mixed Construction Line
- ⊕ Completed Road as Line
- ⊖ Planned Burnout
- ⊗ Planned Dozer Line
- ⊖ Planned Fuel Break
- ⊕ Planned Mixed Construction Line
- ⊖ Planned Road as Line
- ⊕ Planned Secondary Line
- Access or Improved Road
- Other
- Route
- Temporary Flight Restriction
- Fire Edge
- Contained Line
- Wildfire Daily Fire Perimeter
- Paved Roads
- Dirt (Not Paved)
- Dip Site
- Helispot
- Division Break
- Drop Point
- Camp
- Staging Area
- Lookout
- Other
- Landmark
- Gate
- Bridge
- Mobile Weather Unit
- Internet Access
- Repeater
- Safety Zone
- Hazard
- Water Source
- Trails
- Stock Trails
- 200ft Contour
- Stream
- Waterbody
- Fuels Treatment
- Pasture
- BIG ELK
- BUZZARD
- EAST
- LITTLE ELK
- MILLER CREEK
- NORTH
- SOUTH
- STATION
- UPPER COTTONWOOD
- WEST
- WILLOW
- Range Allotments
- AMERICAN FORK
- BIG ELK
- CINNAMON
- COTTONWOOD
- LITTLE ELK
- LOST HORSE
- MILLER CREEK
- STATION
- UPPER COTTONWOOD
- Inventoried Roadless Areas
- Fire History Polygon
- County Boundary
- Other Fed Government
- State MT
- Custer Gallatin National Forest
- Helena-Lewis and Clark National Forest



RMIMT Type I GIS  
Date Exported: 8/15/2021 10:40 PM  
North American 1983 Datum, LatLong Grid

