

American Fork Fire

MT-HLF-005087

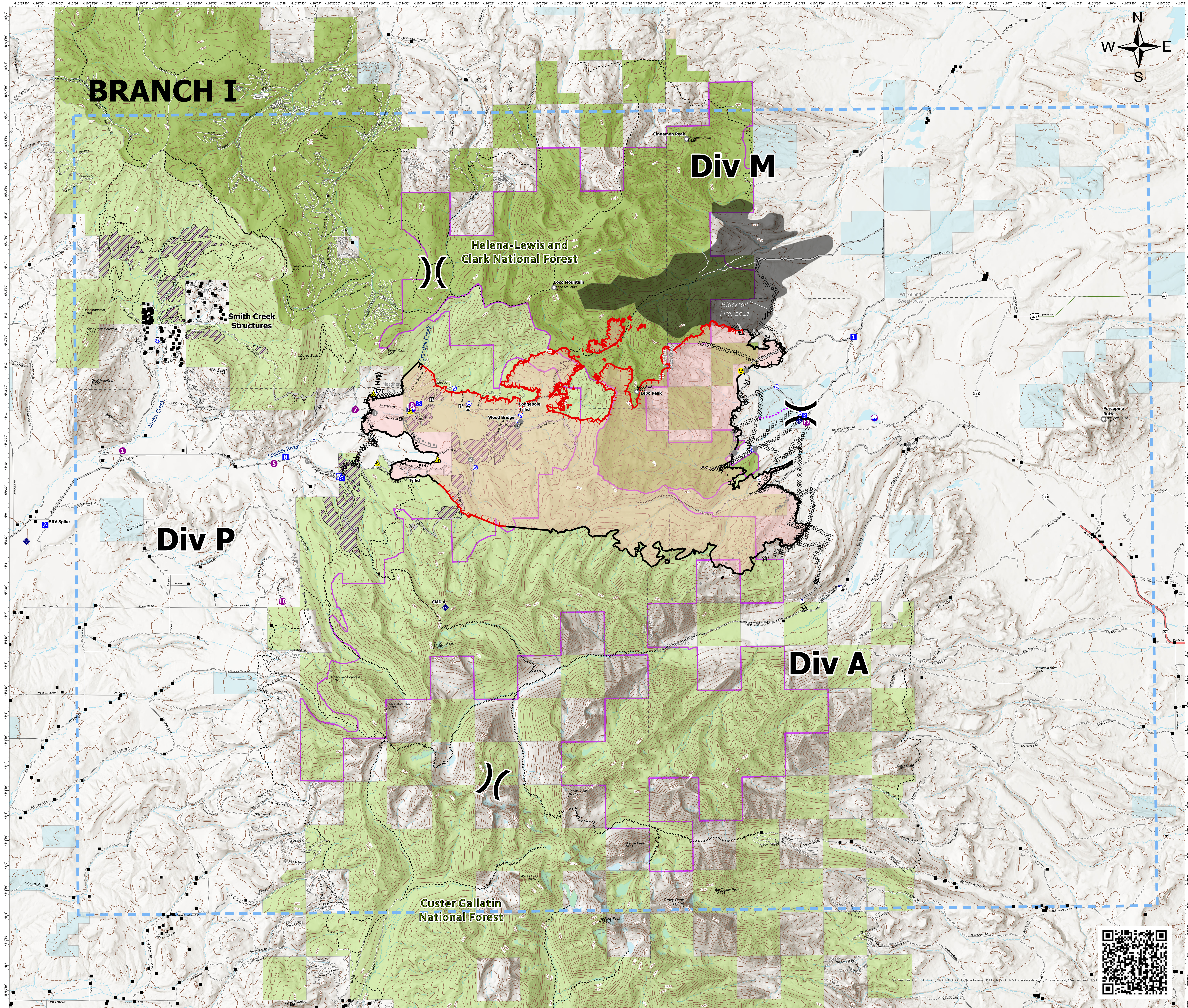
Operations Map

Approx. 20,187 GIS Acres
@ 8/14/2021 2204 hrs

Operational Shift
8/16/2021



- Gap; Summit
- Structure- State Data
- Dip Site
- Helispot
- ✕ Division Break
- Drop Point
- Camp
- Staging Area
- ⊠ Lookout
- Other
- Landmark
- Gate
- Bridge
- ◆ Mobile Weather Unit
- ◆ Internet Access
- ◆ Repeater
- ▲ Safety Zone
- ▲ Hazard
- Water Source
- Pump
- ⊠ Completed Burnout
- ⊠ Completed Dozer Line
- M Completed Fuel Break
- H Completed Hand Line
- M Completed Mixed Construction Line
- R Completed Road as Line
- ⊠ Planned Burnout
- ⊠ Planned Dozer Line
- M Planned Fuel Break
- M Planned Mixed Construction Line
- R Planned Road as Line
- ⊠ Planned Secondary Line
- Access or Improved Road
- Other
- Route
- Temporary Flight Restriction
- Fire Edge
- Contained Line
- Wildfire Daily Fire Perimeter
- Secondary Highway
- Paved Roads
- Dirt (Not Paved)
- US Route Not Paved
- Inventoried Roadless Areas
- Trails
- Stock Trails
- 200ft Contour
- Stream
- Waterbody
- Fuels Treatment
- Fire History Polygon
- County Boundary
- Other Fed Government
- State MT
- Custer Gallatin National Forest
- Helena-Lewis and Clark National Forest



0 0.5 1 2 3
Miles

RMIMT Type I GIS
Date Exported: 8/15/2021 6:36 PM
North American 1983 Datum, LatLong Grid

