

American Fork Fire

MT-HLF-005087

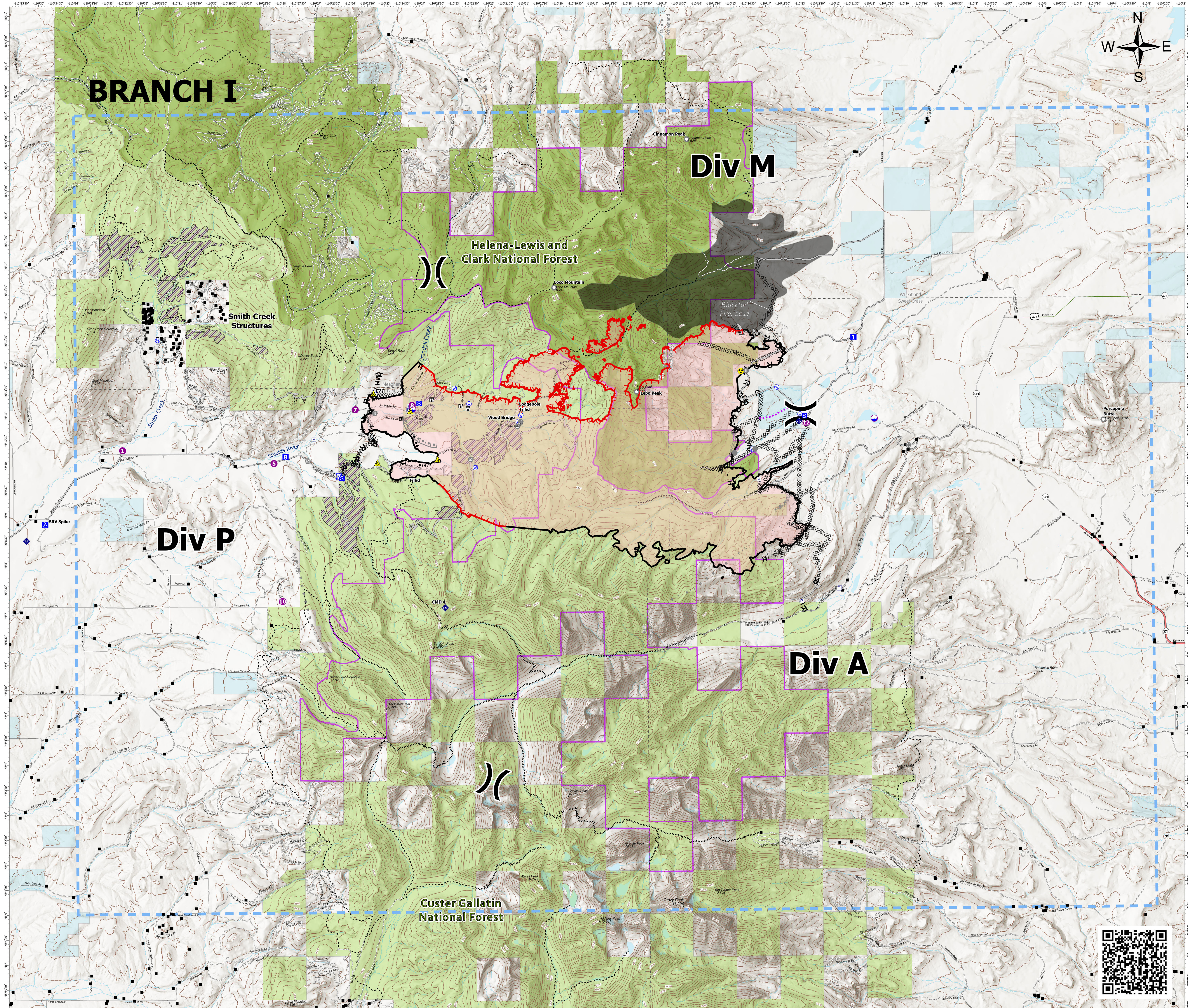
Operations Map

Approx. 20,187 GIS Acres
@ 8/14/2021 2204 hrs

Operational Shift
8/16/2021



- Gap; Summit
- Structure- State Data
- Dip Site
- Helispot
- ✕ Division Break
- Drop Point
- Camp
- Staging Area
- Ⓜ Lookout
- Other
- Landmark
- Gate
- Bridge
- ◆ Mobile Weather Unit
- ◆ Internet Access
- ◆ Repeater
- ▲ Safety Zone
- ▲ Hazard
- Water Source
- Pump
- Ⓜ Completed Burnout
- ✕ Completed Dozer Line
- Ⓜ Completed Fuel Break
- Ⓜ Completed Hand Line
- Ⓜ Completed Mixed Construction Line
- Ⓜ Completed Road as Line
- Ⓜ Planned Burnout
- ✕ Planned Dozer Line
- Ⓜ Planned Fuel Break
- Ⓜ Planned Mixed Construction Line
- Ⓜ Planned Road as Line
- Ⓜ Planned Secondary Line
- Access or Improved Road
- Other
- Route
- Temporary Flight Restriction
- Fire Edge
- Contained Line
- Wildfire Daily Fire Perimeter
- Secondary Highway
- Paved Roads
- Dirt (Not Paved)
- US Route Not Paved
- Inventoried Roadless Areas
- Trails
- Stock Trails
- 200ft Contour
- Stream
- Waterbody
- Fuels Treatment
- Fire History Polygon
- County Boundary
- Other Fed Government
- State MT
- Custer Gallatin National Forest
- Helena-Lewis and Clark National Forest



BRANCH I

Div M

Helena-Lewis and Clark National Forest

Smith Creek Structures

Blacktail Fire, 2017

Div P

Div A

Custer Gallatin National Forest



RMIMT Type I GIS
Date Exported: 8/15/2021 6:37 PM
North American 1983 Datum, LatLong Grid

