

American Fork Fire

MT-HLF-005087

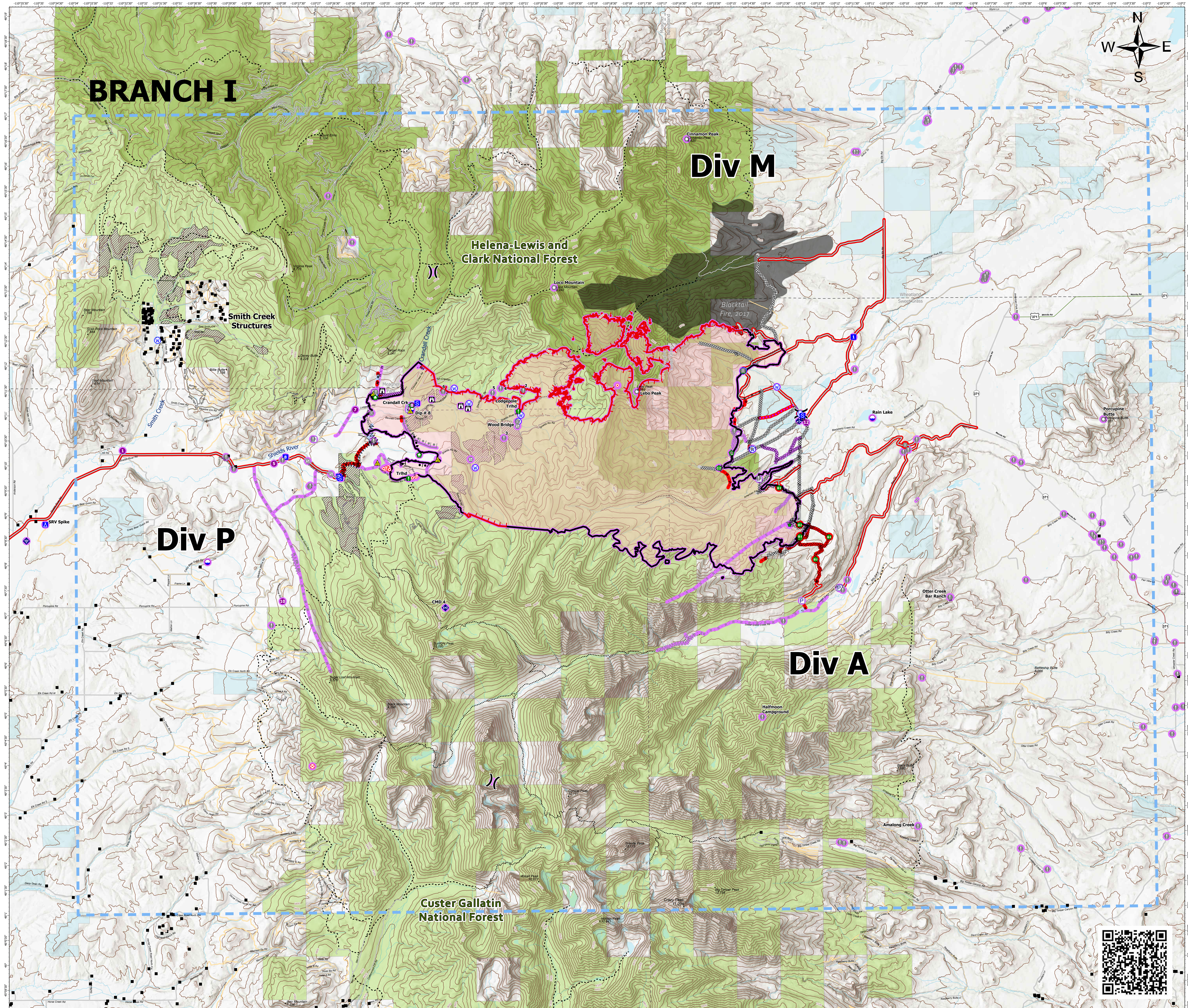
Repair Map

Approx. 20,741 GIS Acres
@ 8/15/2021 2138 hrs

Operational Shift
8/17/2021



- Gap; Summit
- Structure- State Data
- For Repair Event Point
- Air Operations
- Drop Site
- Helispot
- Assignment Breaks
- Revision Breaks
- Logistics
- Drop Point
- Camp
- Staging Area
- Operations
- Lookout
- Fire
- Hot Spot - Spot Fire
- Fire Origin
- Reference
- Value at Risk
- Other
- Landmark
- Gate
- Bridge
- Structure Wrap
- Stream Crossing
- Resource Location
- Repair Point
- Fence - Cut/Damaged
- Dozer Push
- Communications
- Mobile Weather Unit
- Internet Access
- Repeater
- Safety
- Safety Zone
- Hazard
- Water
- Water Source
- For Repair Event Line
- Ops Completed
- Completed Burnout
- Completed Dozer Line
- Completed Fuel Break
- Completed Hand Line
- Completed Mixed Construction Line
- Completed Road as Line
- Ops Planned
- Planned Burnout
- Planned Dozer Line
- Planned Fuel Break
- Planned Mixed Construction Line
- Planned Road as Line
- Planned Secondary Line
- Reference
- Access or Improved Road
- Other
- Air Ops
- Route
- Temporary Flight Restriction
- Fire Perimeter
- Fire Edge
- Contained Line
- Wildfire Daily Fire Perimeter
- For Repair Accountable Property
- Accountable Property
- Pump
- Repair Status Point
- Completed - Inspected
- In Use - Fire Management
- Completed - Ready for Inspection
- In Progress
- Repair Needed
- No Repair Needed
- Other - See Comments
- Unknown
- Repair Status Line
- Completed - Inspected
- In Use - Fire Management
- Completed - Ready for Inspection
- In Progress
- Repair Needed
- No Repair Needed
- Other - See Comments
- Unknown
- Repair Status Accountable Property
- Completed - Inspected
- In Use - Fire Management
- Completed - Ready for Inspection
- In Progress
- Repair Needed
- No Repair Needed
- Other - See Comments
- Unknown
- Secondary Highway
- Paved Roads
- Dirt (Not Paved)
- US Route Not Paved
- Private Roads
- Trails
- Stock Trails
- 200ft Contour
- Stream
- Waterbody
- Fuels Treatment
- Fire History Polygon
- County Boundary
- Other Fed Government
- State MT
- Custer Gallatin National Forest
- Helena-Lewis and Clark National Forest



BRANCH I

Div M

Div P

Div A

Helena-Lewis and Clark National Forest

Custer Gallatin National Forest

Smith Creek Structures

Blacktail Fire, 2017

Crandall Crk

Loggopole Trth

Wood Bridge

Rain Lake

Other Creek Bar Ranch

Halfmoon Campground

Amalong Creek



RMIMT Type I GIS
Date Exported: 8/16/2021 8:29 PM
North American 1983 Datum, LatLong Grid

