

American Fork Fire

MT-HLF-005087

Ops With IR

Approx. 20,741 GIS Acres

@ 8/15/2021 2138 hrs

IR Acres - 21,369

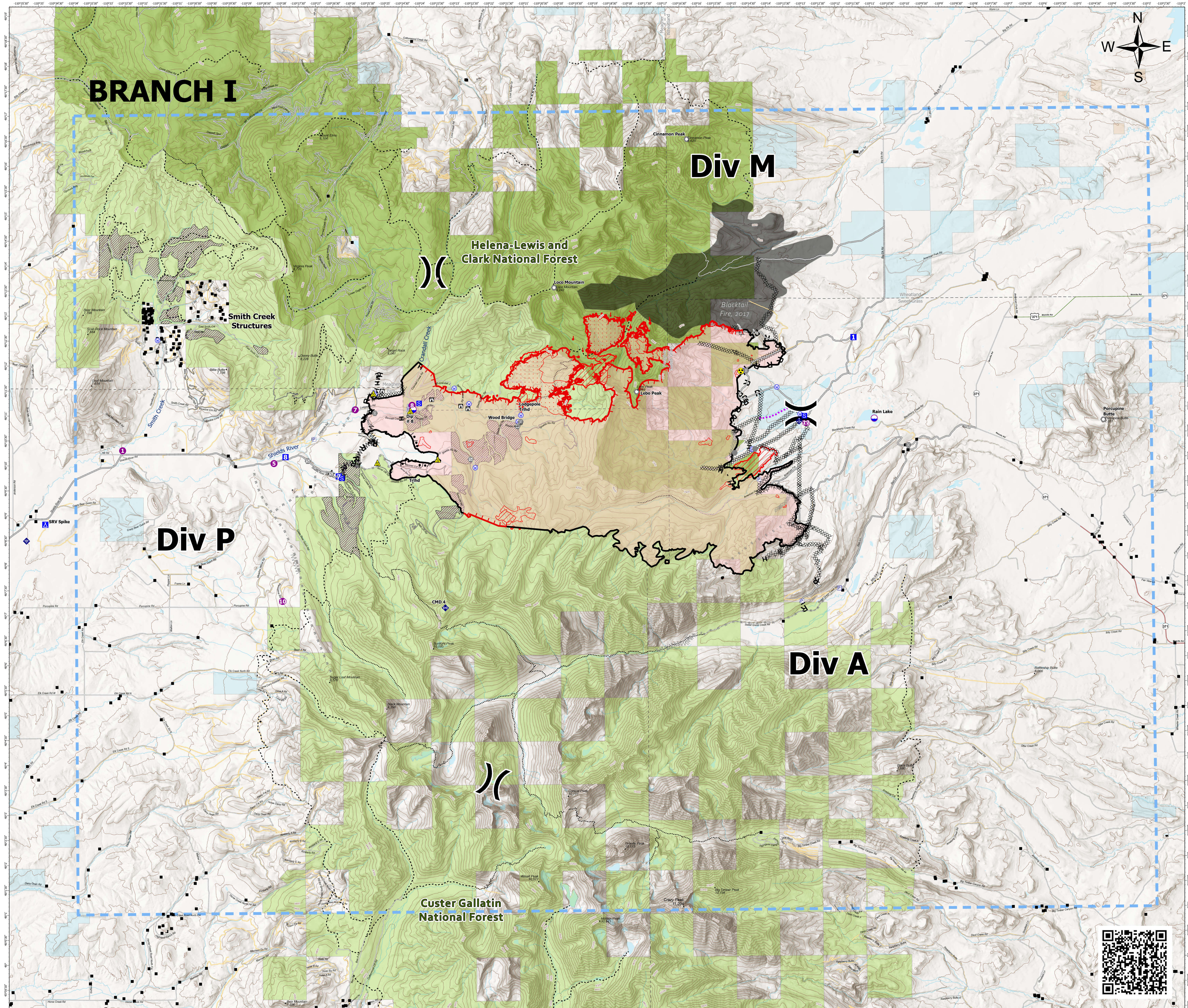
@ 8/16/2021 1917 hrs

Operational Shift

8/17/2021



- Gap; Summit
- Structure- State Data
- Dip Site
- Helispot
- Division Break
- Drop Point
- Camp
- Staging Area
- Lookout
- Other
- Landmark
- Gate
- Bridge
- Mobile Weather Unit
- Internet Access
- Repeater
- Safety Zone
- Hazard
- Water Source
- Pump
- Completed Burnout
- Completed Dozer Line
- M Completed Fuel Break
- H Completed Hand Line
- M Completed Mixed Construction Line
- R Completed Road as Line
- Planned Dozer Line
- M Planned Fuel Break
- M Planned Mixed Construction Line
- R Planned Road as Line
- S Planned Secondary Line
- Access or Improved Road
- Other
- Route
- Temporary Flight Restriction
- Fire Edge
- Contained Line
- Wildfire Daily Fire Perimeter
- Secondary Highway
- Paved Roads
- Dirt (Not Paved)
- US Route Not Paved
- Private Roads
- Trails
- Stock Trails
- 200ft Contour
- Stream
- Waterbody
- Fuels Treatment
- Fire History Polygon
- County Boundary
- Other Fed Government
- State MT
- Custer Gallatin National Forest
- Helena-Lewis and Clark National Forest
- 20210816_1917_AmericanFork_IR_HeatPerimeter
- 20210815_2138_AmericanFork_IR_IntenseHeat
- 20210816_1617_AmericanFork_IR_ScatteredHeat



RMIMT Type I GIS
Date Exported: 8/17/2021 5:51 AM
North American 1983 Datum, LatLong Grid

