

American Fork Fire

MT-HLF-005087

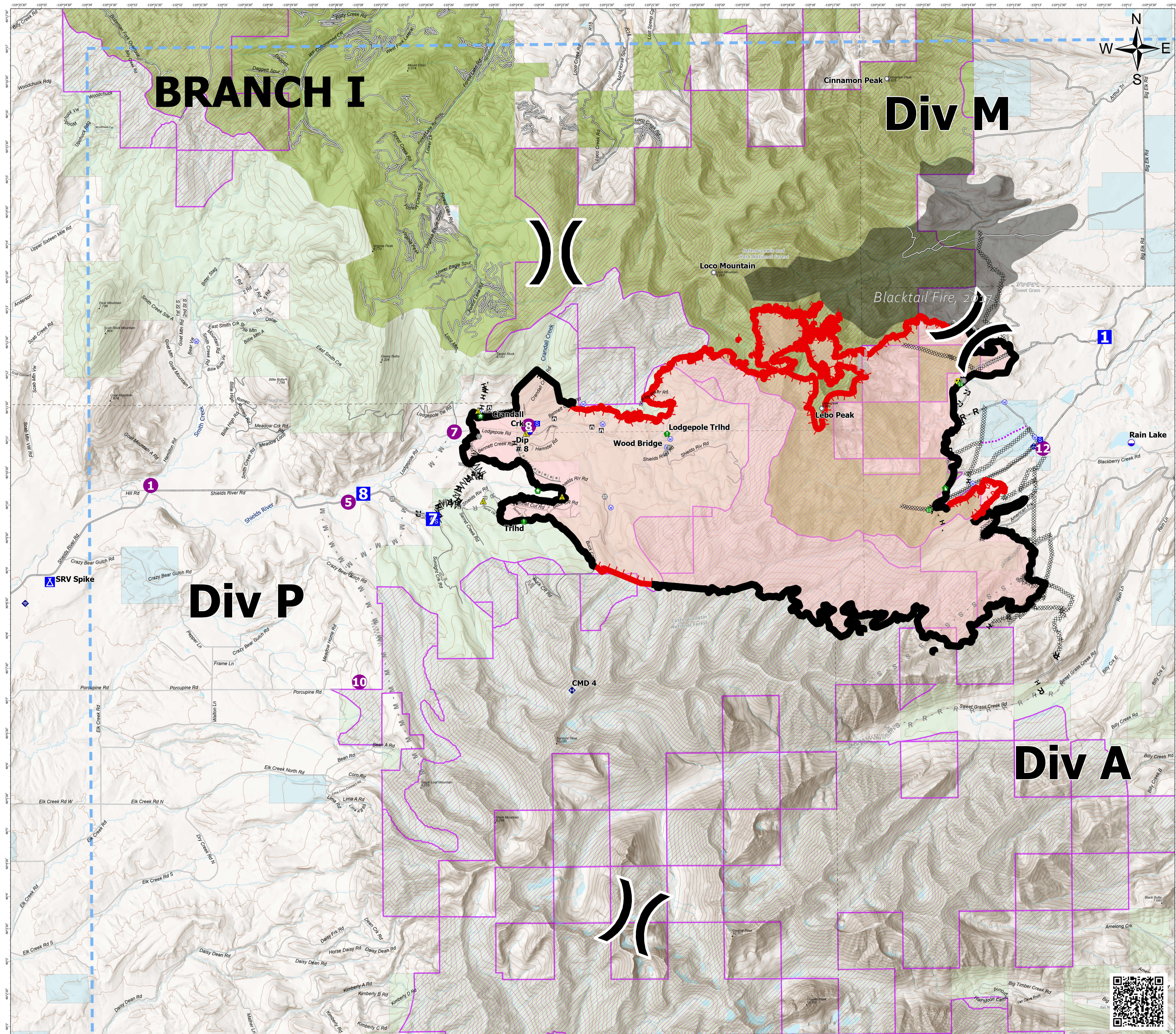
Briefing Map

Approx. 21,876 GIS Acres
@ 8/17/2021 1130

Operational Shift
08/18/2021



- Gap; Summit
- Dip Site
- Helispot
- Division Break
- Drop Point
- Camp
- Staging Area
- Lookout
- Landmark
- Gate
- Bridge
- Structure Wrap
- Stream Crossing
- Resource Location
- Dozer Push
- Mobile Weather Unit
- Internet Access
- Repeater
- Safety Zone
- Hazard
- Water Source
- Completed Burnout
- Completed Dozer Line
- Completed Fuel Break
- Completed Hand Line
- Completed Mixed Construction Line
- Completed Road as Line
- Planned Burnout
- Planned Dozer Line
- Planned Fuel Break
- Planned Mixed Construction Line
- Planned Road as Line
- Planned Secondary Line
- Access or Improved Road
- Other
- Route
- Temporary Flight Restriction
- Fire Edge
- Contained Line
- Wildfire Daily Fire Perimeter
- Fire History Footprint
- 200ft Contour
- County Boundary
- Inventoried Roadless Areas
- Other Fed Government
- State MT
- Custer Gallatin National Forest
- Helena-Lewis and Clark National Forest

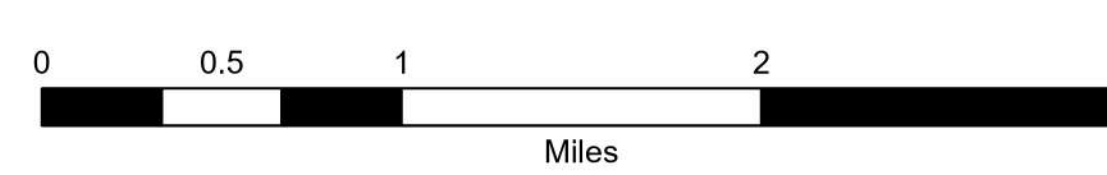


BRANCH I

Div M

Div P

Div A



RMINT Type I GIS
Date Exported: 8/17/2021 6:40 PM
North American 1983 Datum. Lat/Long Grid

