

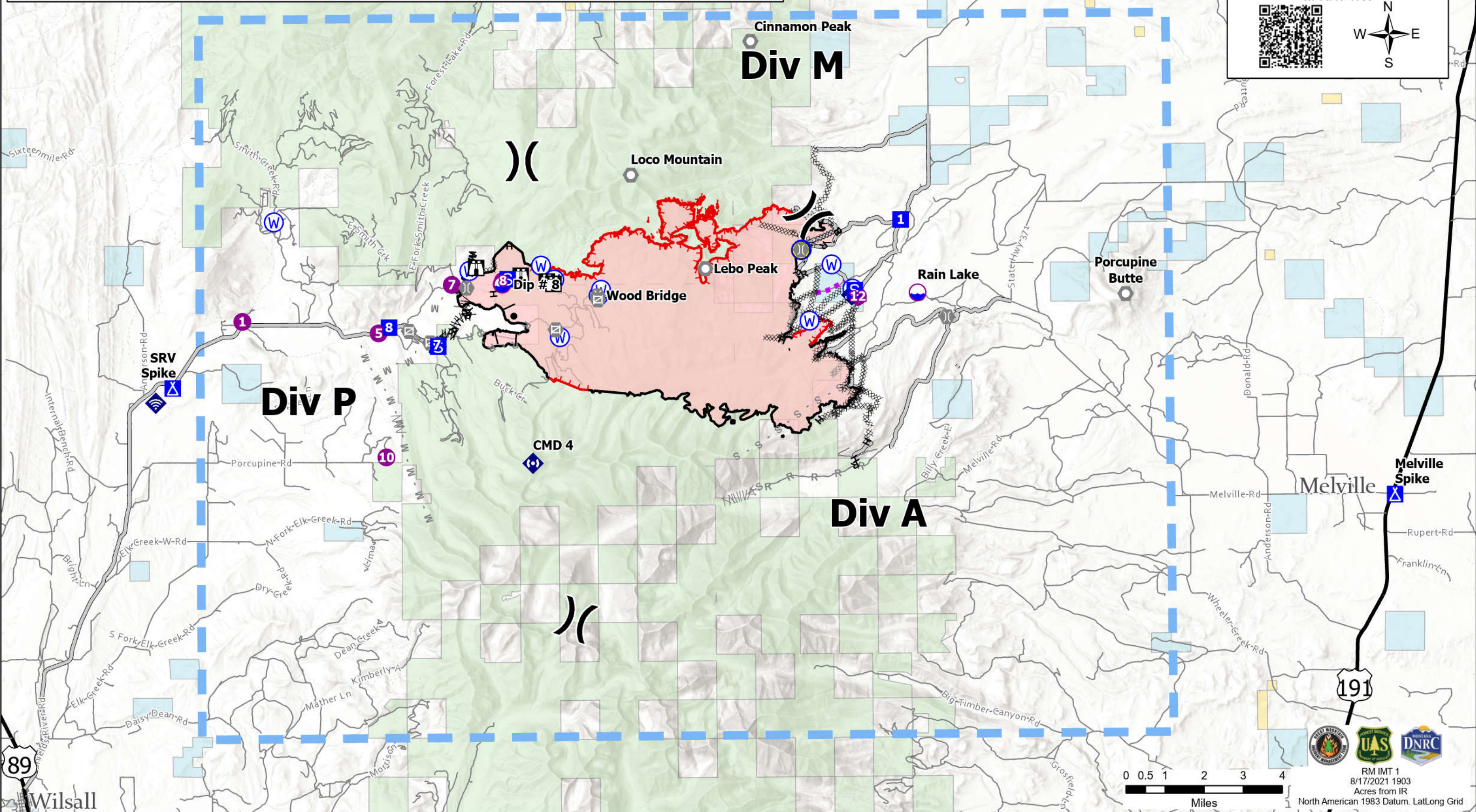
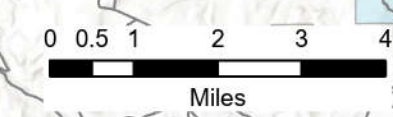


- | | | | | | |
|------------------|-----------------------|-------------------------------------|-----------------------------------|---------------------------------|--------------------------------|
| ○ Dip Site | ○ Landmark | ○ Water Source | ⊘ Planned Dozer Line | — Route | — Local Road |
| ● Helispot | ○ Gate | — Completed Burnout | ⊘ Planned Fuel Break | ■ Temporary Flight Restriction | — 4WD |
| × Division Break | ○ Bridge | ⊘ Completed Dozer Line | M Planned Mixed Construction Line | — Fire Edge | ■ Local Government |
| ■ Drop Point | ◆ Mobile Weather Unit | ⊘ Completed Fuel Break | R Planned Road as Line | — Contained Line | ■ State Government |
| ■ Camp | ◆ Internet Access | H Completed Hand Line | S Planned Secondary Line | — Wildfire Daily Fire Perimeter | ■ US Bureau of Land Management |
| ■ Staging Area | ◆ Repeater | M Completed Mixed Construction Line | — Access or Improved Road | — Major Road | ■ US Forest Service |
| ■ Lookout | ★ Hazard | R Completed Road as Line | — Other | — Local Connecting Road | ■ Cities and Towns |

IAP Map
American Fork
 MT-HLF-005087
 08/18/2021
 Approx. 21,876 GIS Acres
 on 08/17 1130

89 Wilsall



RM IMT 1
 8/17/2021 1903
 Acres from IR
 North American 1983 Datum. LatLong Grid