

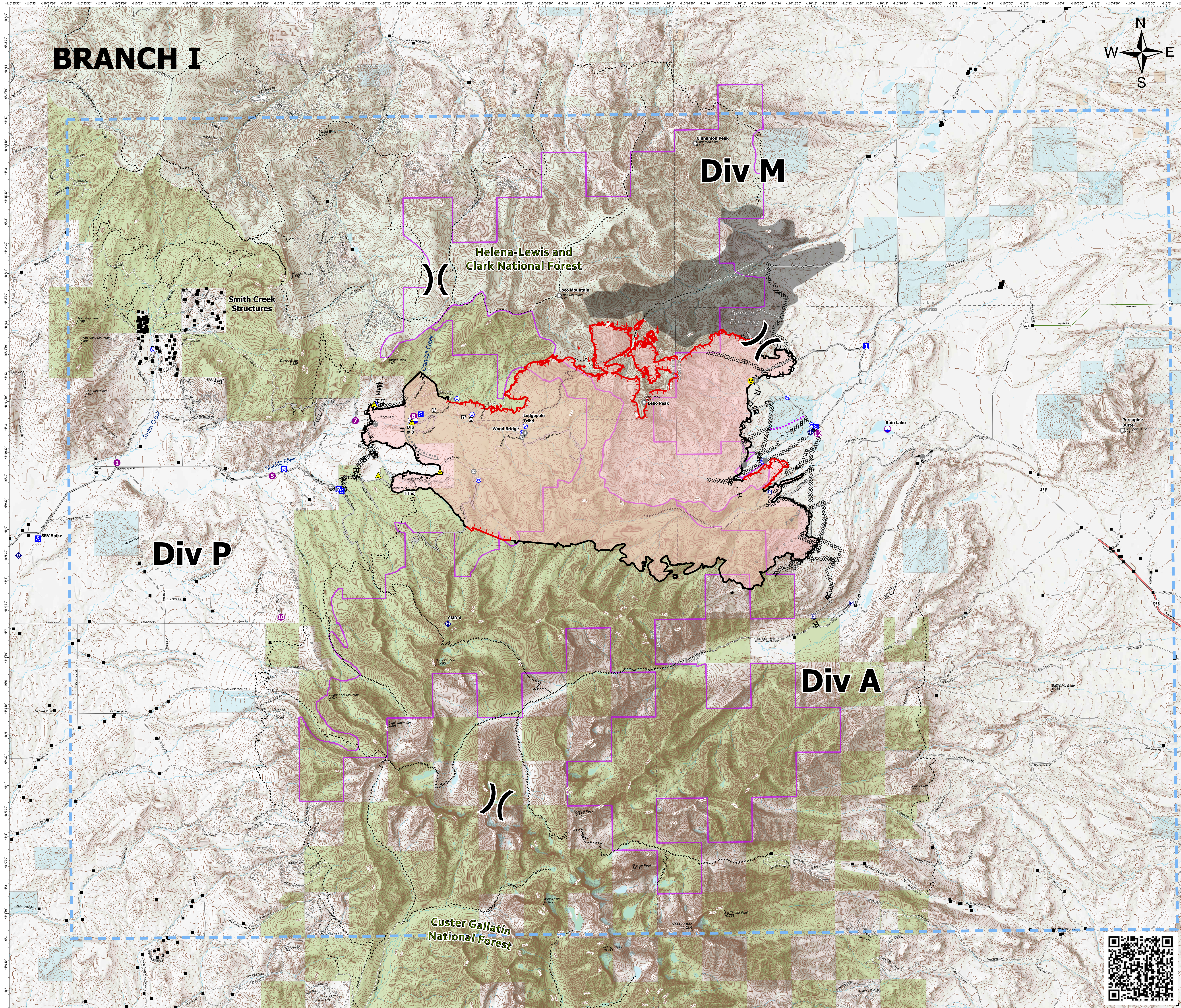
American Fork Fire MT-HLF-005087 Operations Map

Approx 21,876 @ 1130, 8/17

**Operational Shift
8/18/21**



- ▲ Gap; Summit
- Structure- State Data
- Dip Site
- Helispot
- ✕ Division Break
- Drop Point
- Camp
- Staging Area
- Lookout
- Other
- Landmark
- Gate
- Bridge
- ◆ Mobile Weather Unit
- ◆ Internet Access
- ◆ Repeater
- ▲ Safety Zone
- ▲ Hazard
- Water Source
- Pump
- ▲ Completed Burnout
- ××× Completed Dozer Line
- ∩ Completed Fuel Break
- ∩ Completed Hand Line
- ∩ Completed Mixed Construction Line
- R Completed Road as Line
- ▲ Planned Burnout
- ××× Planned Dozer Line
- ∩ Planned Fuel Break
- ∩ Planned Mixed Construction Line
- R Planned Road as Line
- Planned Secondary Line
- Access or Improved Road
- Other
- Route
- Temporary Flight Restriction
- Fire Edge
- Contained Line
- Wildfire Daily Fire Perimeter
- Secondary Highway
- Paved Roads
- Dirt (Not Paved)
- US Route Not Paved
- Trails
- Stock Trails
- Stream
- Waterbody
- Inventoried Roadless Areas
- Fire History Polygon
- CountyBoundary
- Other Fed Government
- State MT
- Custer Gallatin National Forest
- Helena-Lewis and Clark National Forest



RMIMT Type I GIS
Date Exported: 8/17/2021 8:00 PM
North American 1983 Datum, LatLong Grid

