

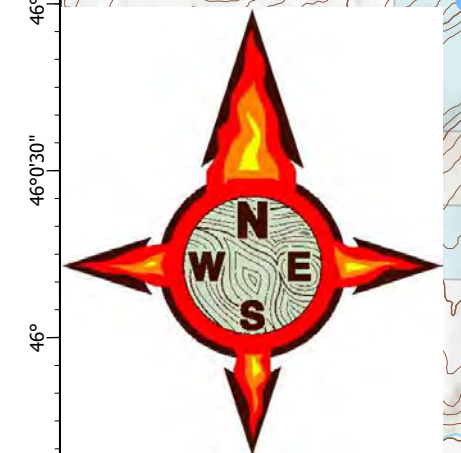
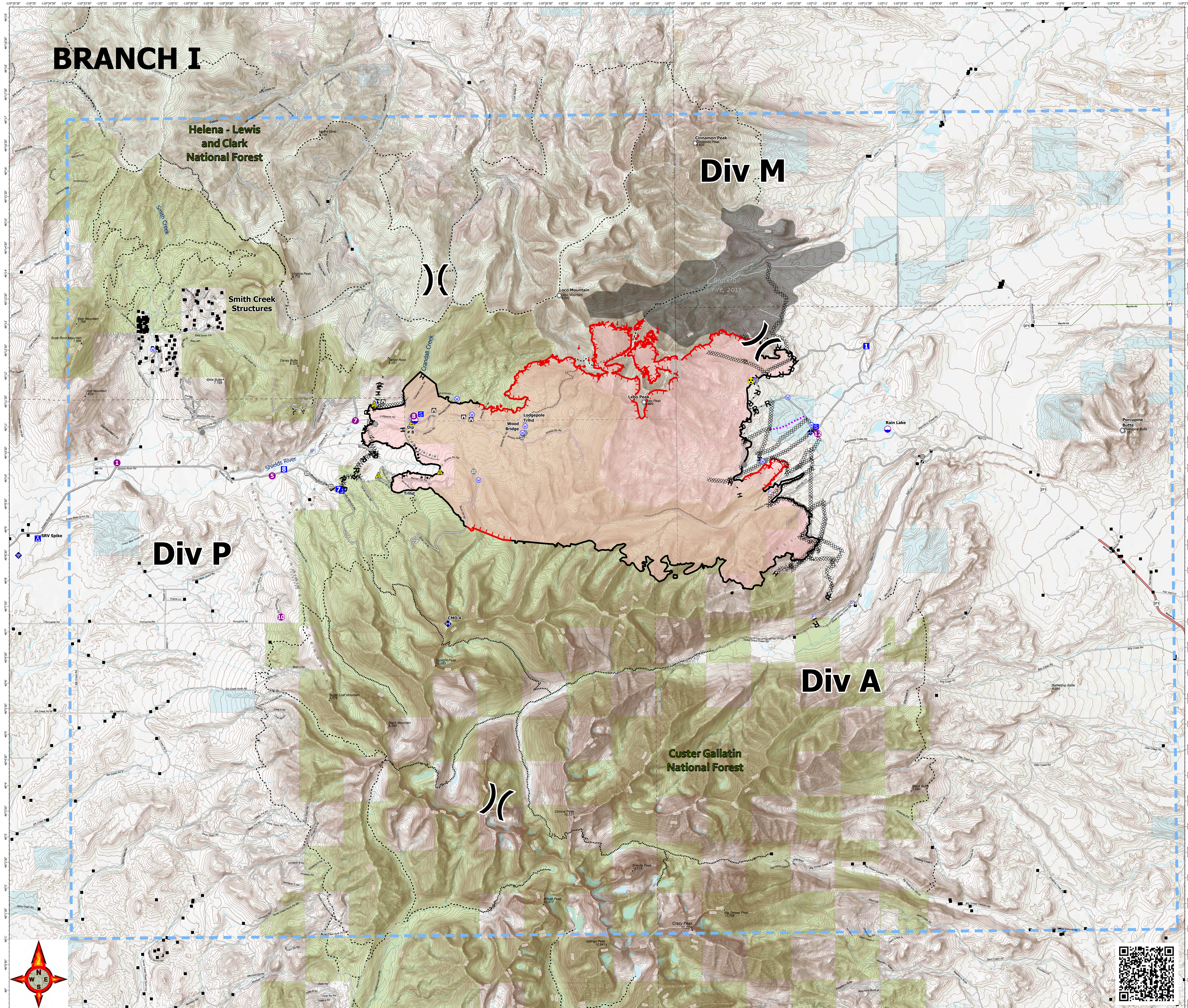
American Fork Fire MT-HLF-005087 Operations Map

Approx 21,876 @ 1130, 8/17

**Operational Shift
8/19/21**



- ▲ Gap; Summit
- Structure- State Data
- Dip Site
- Helispot
- ✕ Division Break
- Drop Point
- Camp
- Staging Area
- Lookout
- Other
- Landmark
- Gate
- Bridge
- ◆ Mobile Weather Unit
- ◆ Internet Access
- ◆ Repeater
- ▲ Safety Zone
- ◆ Hazard
- Water Source
- Pump
- ▬ Completed Burnout
- ▬ Completed Dozer Line
- ▬ Completed Fuel Break
- ▬ Completed Hand Line
- ▬ Completed Mixed Construction Line
- ▬ Completed Road as Line
- ▬ Planned Burnout
- ▬ Planned Dozer Line
- ▬ Planned Fuel Break
- ▬ Planned Mixed Construction Line
- ▬ Planned Road as Line
- ▬ Planned Secondary Line
- ▬ Access or Improved Road
- ▬ Other
- ▬ Route
- ▬ Temporary Flight Restriction
- ▬ Fire Edge
- ▬ Contained Line
- ▬ Wildfire Daily Fire Perimeter
- ▬ Secondary Highway
- ▬ Paved Roads
- ▬ Dirt (Not Paved)
- ▬ US Route Not Paved
- ▬ Trails
- ▬ Stock Trails
- ▬ Inventoried Roadless Areas
- ▬ Fire History Polygon
- ▬ County Boundary
- ▬ Other Fed Government
- ▬ State MT
- ▬ Custer Gallatin National Forest
- ▬ Helena-Lewis and Clark National Forest



RMIMT Type I GIS
Date Exported: 8/18/2021 20:52
North American 1983 Datum, LatLong Grid

