

American Fork Fire

MT-HLF-5087

Pilot Map

Approx. 21,876 GIS Acres

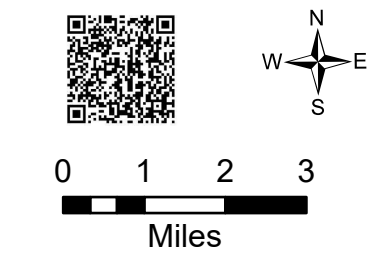
@ 1130 8/17/2021

Operational Shift

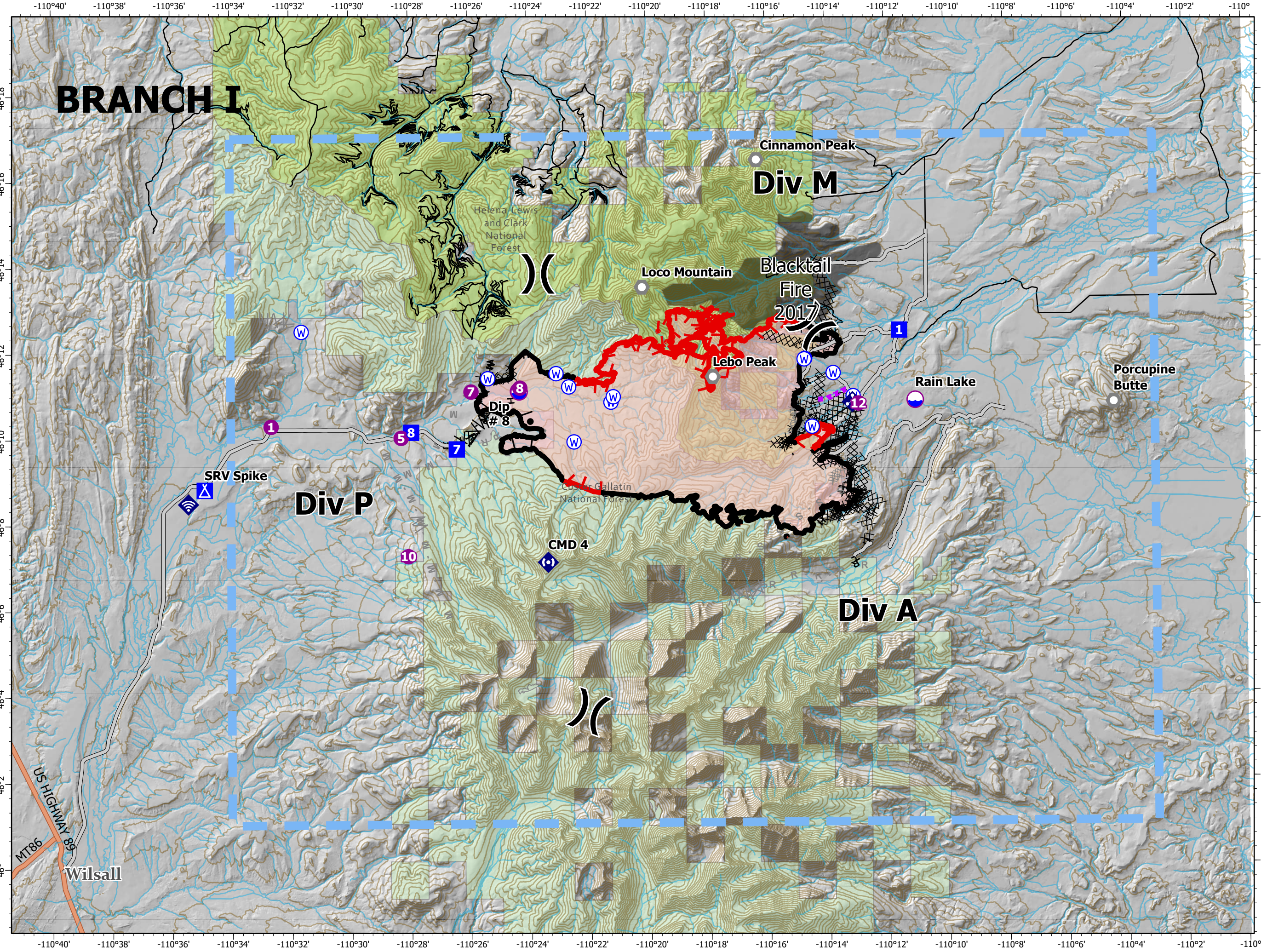
8/19/21



- Dip Site
- Helispot
- Division Break
- Drop Point
- Camp
- Landmark
- Mobile Weather Unit
- Internet Access
- Repeater
- Water Source
- Completed Burnout
- Completed Dozer Line
- Completed Fuel Break
- Completed Hand Line
- Completed Mixed Construction Line
- Completed Road as Line
- Planned Dozer Line
- Planned Fuel Break
- Planned Mixed Construction Line
- Planned Road as Line
- Planned Secondary Line
- Access or Improved Road
- Other
- Route
- Temporary Flight Restriction
- Fire Edge
- Contained Line
- Wildfire Daily Fire Perimeter
- Highways
- Fire History Polygon
- Custer Gallatin NF
- Helena-Lewis and Clark NF



RMIMT
Date Exported: 8/18/2021 5:17 PM
North American 1983 Datum. LatLong Grid



FC Point Type	Label	Comments	Latitude WGS84 DDM	Longitude WGS84 DDM	Elevation (Feet)
Camp	Melville Spike		46° 06.216' N	109° 55.845' W	
Camp	SRV Spike		46° 08.819' N	110° 34.883' W	
Dip Site		Small pond created by fish barrier. Can dip without interference of pump site.	46° 11.090' N	110° 24.339' W	
Dip Site	Dip # 8		46° 11.080' N	110° 24.320' W	
Dip Site	Rain Lake	Type III, II, Shallow	46° 10.827' N	110° 11.035' W	
Drop Point	1	Drop Point 1	46° 12.452' N	110° 11.555' W	
Drop Point	7		46° 09.748' N	110° 26.422' W	
Drop Point	8		46° 10.143' N	110° 27.953' W	
Helispot	1	Adjacent to sheriff outpost	46° 10.290' N	110° 32.645' W	
Helispot	10		46° 07.257' N	110° 28.064' W	
Helispot	12		46° 10.753' N	110° 12.945' W	
Helispot	5	Adjacent to corral on east side, could be on west side if not occupied by cattle	46° 10.016' N	110° 28.286' W	
Helispot	7	added per air ops	46° 11.083' N	110° 25.935' W	
Helispot	8	Added per airops	46° 11.165' N	110° 24.295' W	
Internet Access			46° 08.492' N	110° 35.428' W	
Repeater	CMD 4		46° 07.104' N	110° 23.381' W	
Water Source			46° 11.497' N	110° 23.078' W	
Water Source			46° 11.186' N	110° 22.656' W	
Water Source			46° 09.903' N	110° 22.489' W	
Water Source			46° 10.823' N	110° 21.242' W	
Water Source			46° 10.949' N	110° 21.164' W	
Water Source		middle fork dammed up	46° 10.925' N	110° 13.117' W	
Water Source		pushed up by dozer	46° 11.805' N	110° 14.731' W	
Water Source			46° 11.468' N	110° 13.780' W	
Water Source			46° 11.793' N	110° 14.750' W	
Water Source		1" refill line on dozer line. powered by Mark 3	46° 10.223' N	110° 14.500' W	
Water Source			46° 11.390' N	110° 25.370' W	
Water Source		Trash pump at stream hose at structure good for engine fill	46° 12.498' N	110° 31.619' W	