

American Fork Fire

MT-HLF-005087

Repair Map

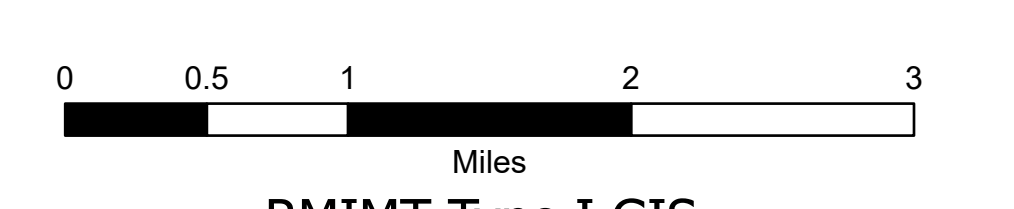
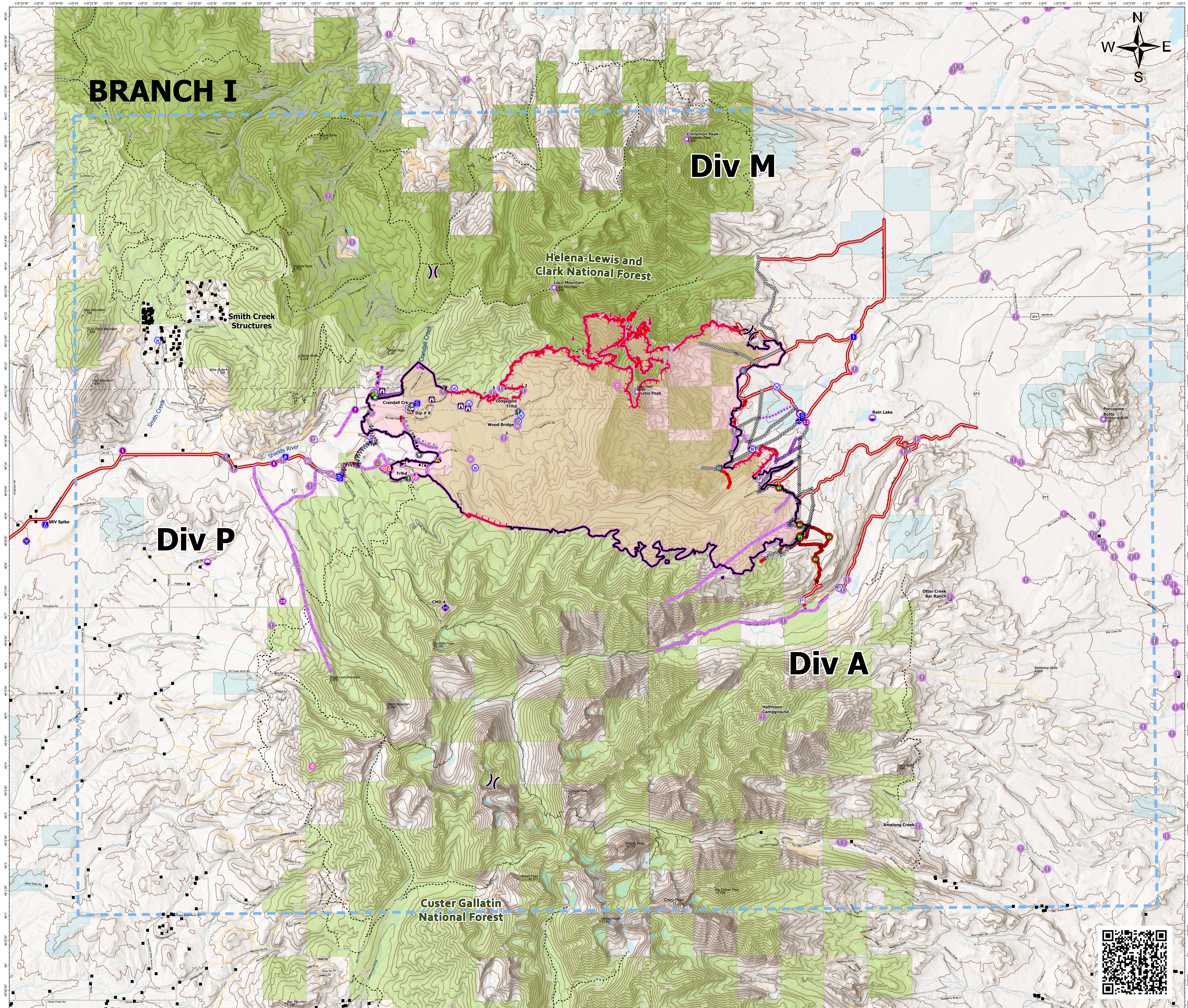
Approx. 21,876 GIS Acres
@ 8/17/2021 1130 hrs

Operational Shift
8/18/2021



Repair Status Accountable Property

- No Repair Needed
 - Unknown
 - Repair Needed
 - No Repair Needed
 - Unknown
- Repair Status Line
- Repair Needed
 - No Repair Needed
 - Other - See Comments
 - Unknown
- Repair Status Point
- Ⓟ Pump
 - Ⓧ Dip Site
 - Ⓢ Hellsite
 -) Division Break
 - Ⓛ Drop Point
 - Ⓜ Camp
 - Ⓜ Staging Area
 - Ⓜ Lookout
 - Ⓢ Hot Spot - Spot Fire
 - Ⓢ Fire Origin
 - Ⓢ Value at Risk
 - Ⓢ Other
 - Ⓢ Landmark
 - Ⓢ Gate
 - Ⓢ Bridge
 - Ⓢ Structure Wrap
 - Ⓢ Stream Crossing
 - Ⓢ Resource Location
 - Ⓢ Repair Point
 - Ⓢ Fence - Cut/Damaged
 - Ⓢ Dozer Push
 - Ⓢ Mobile Weather Unit
 - Ⓢ Internet Access
 - Ⓢ Repeater
 - Ⓢ Safety Zone
 - Ⓢ Hazard
 - Ⓢ Water Source
 - Ⓢ Completed Burnout
 - Ⓢ Completed Dozer Line
 - Ⓢ Completed Fuel Break
 - Ⓢ Completed Hand Line
 - Ⓢ Completed Mixed Construction Line
 - Ⓢ Completed Road as Line
 - Ⓢ Planned Burnout
 - Ⓢ Planned Dozer Line
 - Ⓢ Planned Fuel Break
 - Ⓢ Planned Mixed Construction Line
 - Ⓢ Planned Road as Line
 - Ⓢ Planned Secondary Line
 - Ⓢ Access or Improved Road
 - Ⓢ Other
 - Ⓢ Route
 - Ⓢ Temporary Flight Restriction
- Fire Edge
- Fire Edge
 - Contained Line
 - Wildfire Daily Fire Perimeter
 - Structure- State Data
- Trails
- ⋯ Stock Trails
 - Secondary Highway
 - Paved Roads
 - Dirt (Not Paved)
 - US Route Not Paved
 - Private Roads
 - County Boundary
 - Other Fed Government
 - State MT
 - Custer Gallatin National Forest
 - Helena-Lewis and Clark National Forest



RMIMT Type I GIS
Date Exported: 8/18/2021 09:04
North American 1983 Datum, LatLong Grid

