

American Fork Fire

MT-HLF-005087

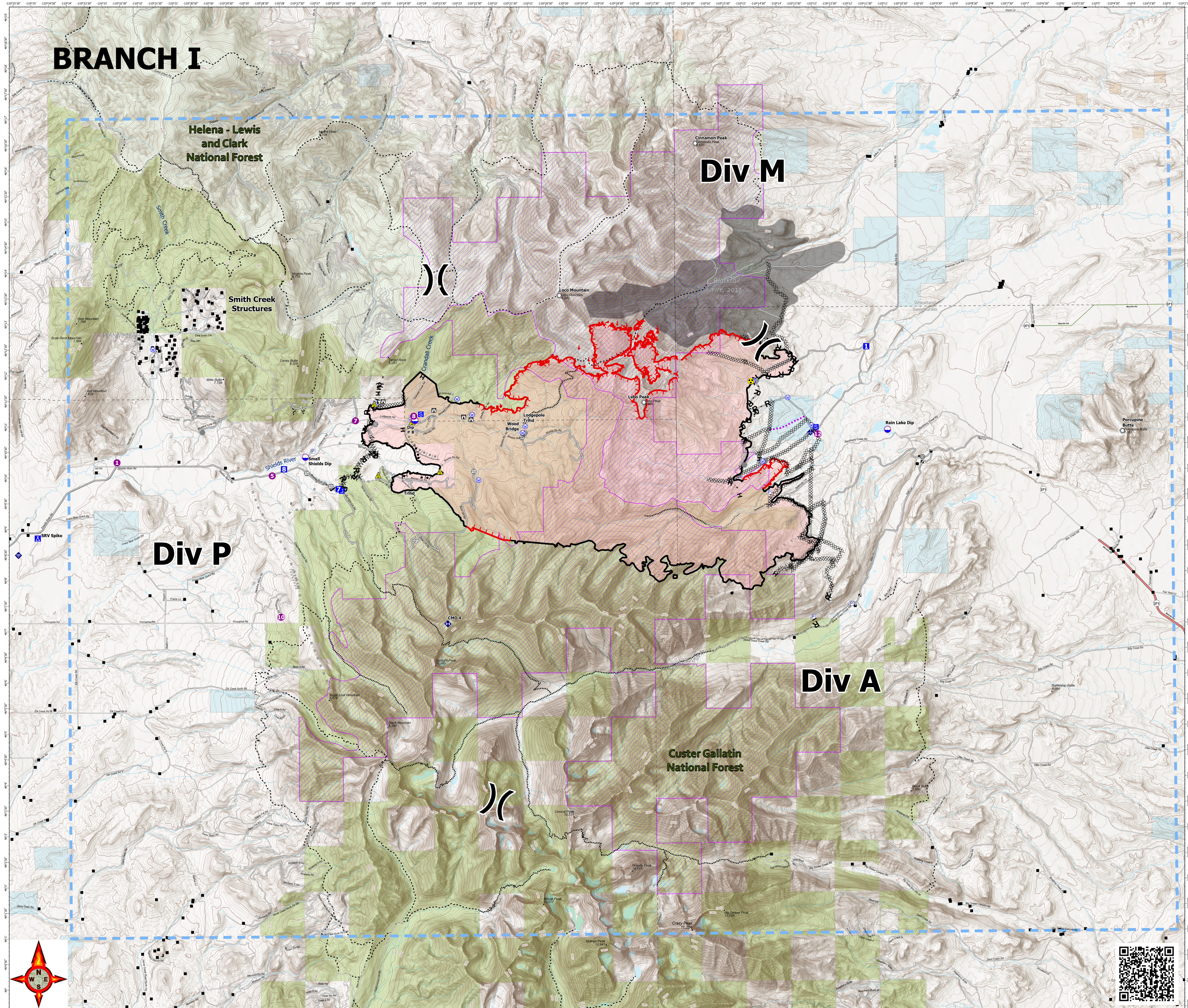
Operations Map

Approx 21,876 @ 1130, 8/17

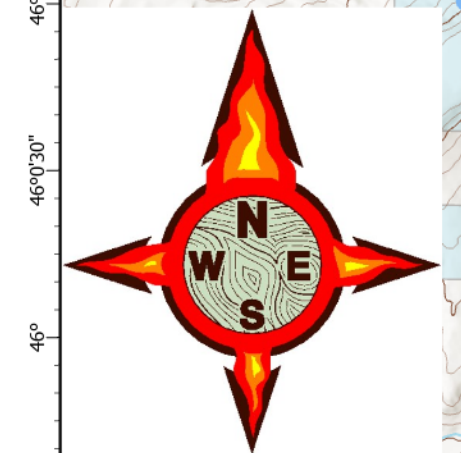
Operational Shift
8/20/21



- ▲ Gap; Summit
- Structure- State Data
- Dip Site
- Helispot
- ✕ Division Break
- Drop Point
- Camp
- Staging Area
- Lookout
- Other
- Landmark
- Gate
- Bridge
- ◆ Mobile Weather Unit
- ◆ Internet Access
- ◆ Repeater
- ▲ Safety Zone
- ◆ Hazard
- Water Source
- Pump
- Completed Burnout
- ⊗ Completed Dozer Line
- ⊗ Completed Fuel Break
- ⊗ Completed Hand Line
- ⊗ Completed Mixed Construction Line
- ⊗ Completed Road as Line
- ⊗ Planned Burnout
- ⊗ Planned Dozer Line
- ⊗ Planned Fuel Break
- ⊗ Planned Mixed Construction Line
- ⊗ Planned Road as Line
- ⊗ Planned Secondary Line
- Access or Improved Road
- Other
- Route
- Temporary Flight Restriction
- Fire Edge
- Contained Line
- Wildfire Daily Fire Perimeter
- Secondary Highway
- Paved Roads
- Dirt (Not Paved)
- US Route Not Paved
- ... Trails
- ... Stock Trails
- Inventoried Roadless Areas
- Fire History Polygon
- CountyBoundary
- Other Fed Government
- State MT
- Custer Gallatin National Forest
- Helena-Lewis and Clark National Forest



0 0.5 1 2 3 Miles



RMIMT Type I GIS
Date Exported: 8/19/2021 8:12 PM
North American 1983 Datum. LatLong Grid

