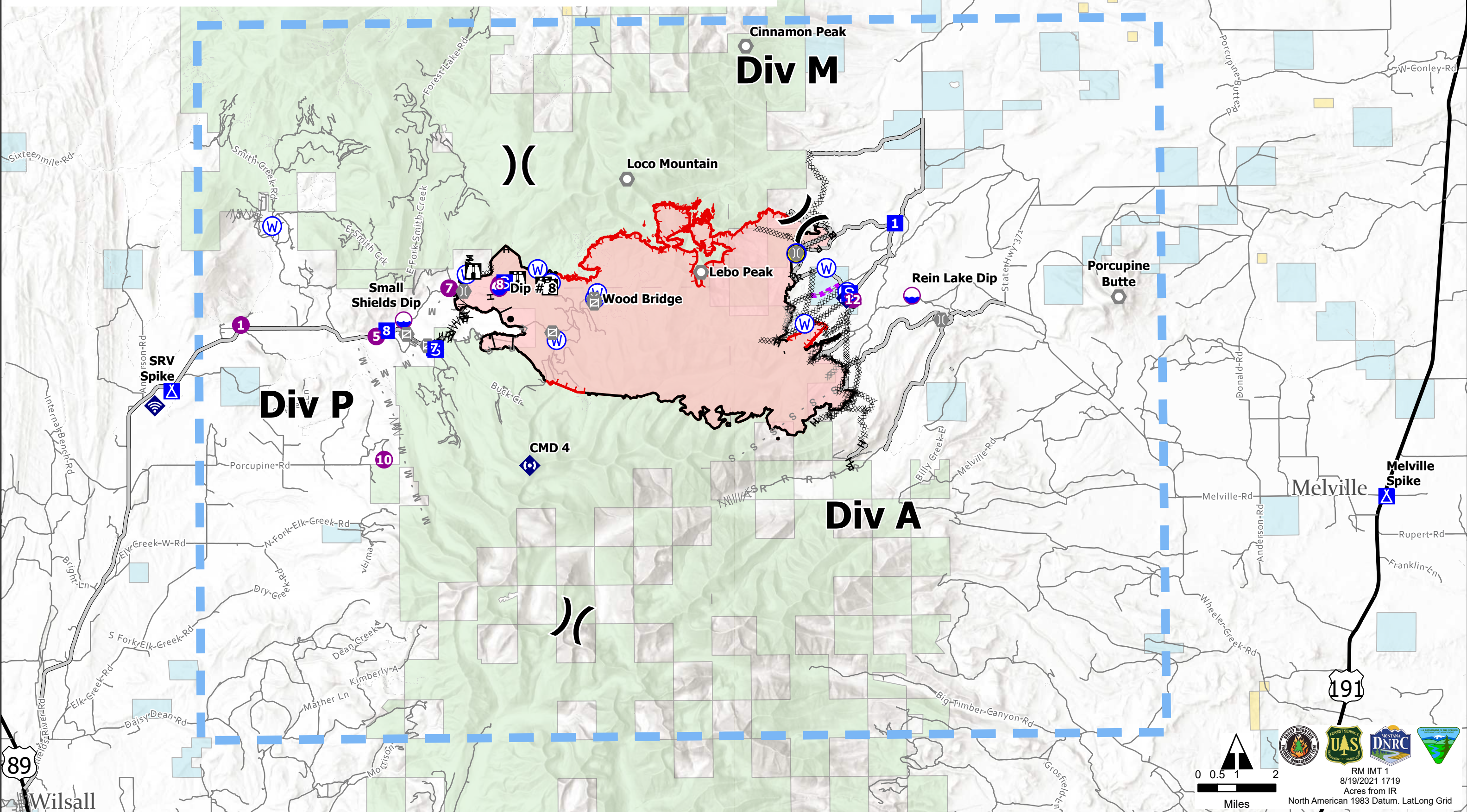




- |                  |                       |                                     |                                   |                                 |                                |
|------------------|-----------------------|-------------------------------------|-----------------------------------|---------------------------------|--------------------------------|
| ○ Dip Site       | ○ Landmark            | ○ Water Source                      | ▨ Planned Dozer Line              | ▬ Route                         | ▬ Local Road                   |
| ● Helispot       | ○ Gate                | — Completed Burnout                 | ▨ Planned Fuel Break              | ▬ Temporary Flight Restriction  | ▬ 4WD                          |
| ⌘ Division Break | ○ Bridge              | ▨ Completed Dozer Line              | M Planned Mixed Construction Line | ▬ Fire Edge                     | ▬ Local Government             |
| ■ Drop Point     | ◆ Mobile Weather Unit | ▨ Completed Fuel Break              | R Planned Road as Line            | ▬ Contained Line                | ▬ State Government             |
| ■ Camp           | ◆ Internet Access     | H Completed Hand Line               | S Planned Secondary Line          | ▬ Wildfire Daily Fire Perimeter | ▬ US Bureau of Land Management |
| ■ Staging Area   | ◆ Repeater            | M Completed Mixed Construction Line | ▬ Access or Improved Road         | ▬ Major Road                    | ▬ US Forest Service            |
| ■ Lookout        | ◆ Hazard              | R Completed Road as Line            | ▬ Other                           | ▬ Local Connecting Road         | ▬ Cities and Towns             |



89 Wilsall



191

RM IMT 1  
8/19/2021 1719  
Acres from IR  
North American 1983 Datum. LatLong Grid