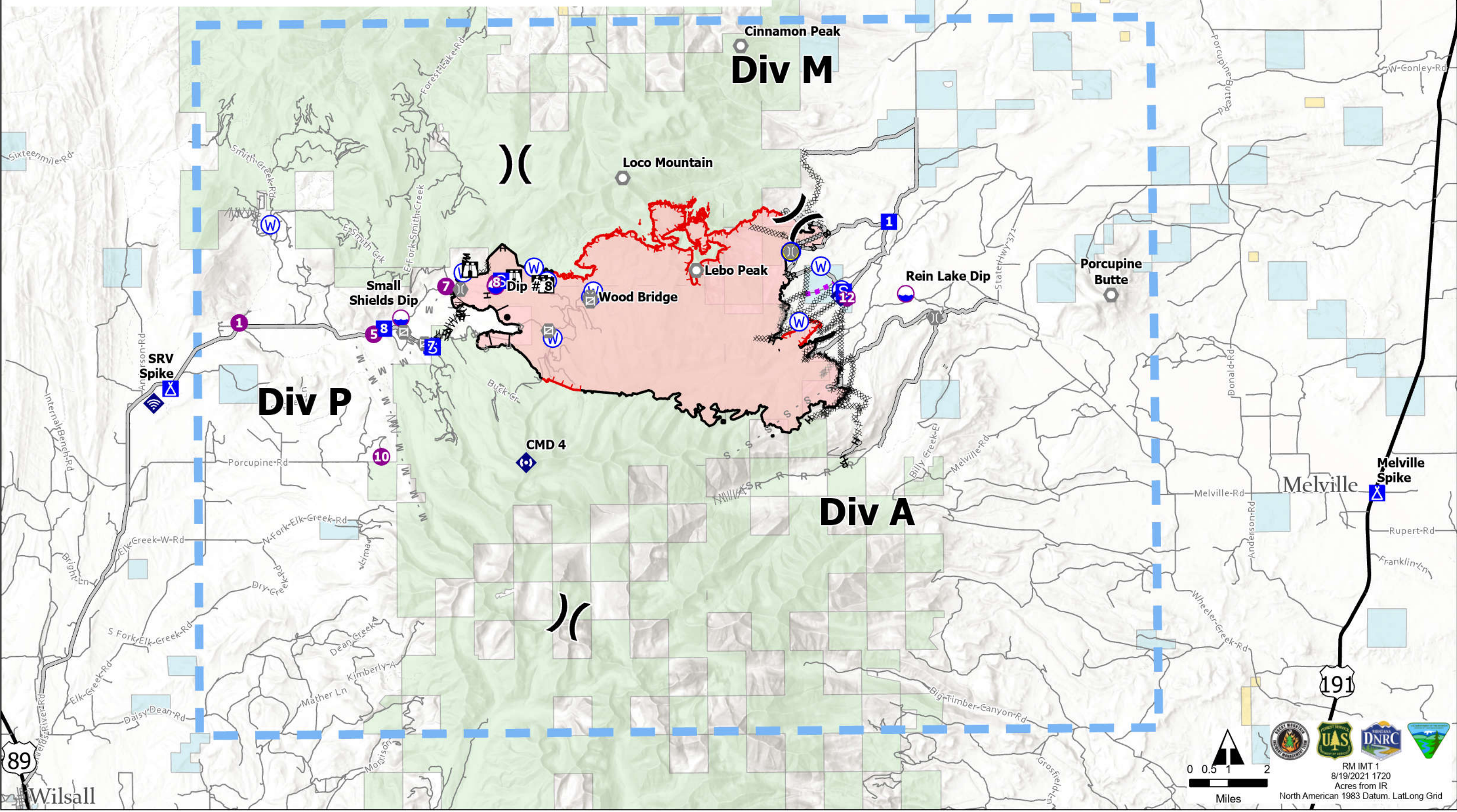




- | | | | | | |
|------------------|-----------------------|-------------------------------------|-----------------------------------|---------------------------------|--------------------------------|
| ○ Dip Site | ○ Landmark | ○ Water Source | ▨ Planned Dozer Line | ▬ Route | ▬ Local Road |
| ● Helispot | ○ Gate | — Completed Burnout | ▨ Planned Fuel Break | ▬ Temporary Flight Restriction | ▬ 4WD |
| ✕ Division Break | ○ Bridge | ▨ Completed Dozer Line | M Planned Mixed Construction Line | ▬ Fire Edge | ▬ Local Government |
| ■ Drop Point | ◆ Mobile Weather Unit | ▨ Completed Fuel Break | R Planned Road as Line | ▬ Contained Line | ▬ State Government |
| ■ Camp | ◆ Internet Access | H Completed Hand Line | S Planned Secondary Line | ▬ Wildfire Daily Fire Perimeter | ▬ US Bureau of Land Management |
| ■ Staging Area | ◆ Repeater | M Completed Mixed Construction Line | ▬ Access or Improved Road | ▬ Major Road | ▬ US Forest Service |
| ■ Lookout | ◆ Hazard | R Completed Road as Line | ▬ Other | ▬ Local Connecting Road | ▬ Cities and Towns |



89 Wilsall

191

RM IMT 1
8/19/2021 1720
Acres from IR
North American 1983 Datum. LatLong Grid