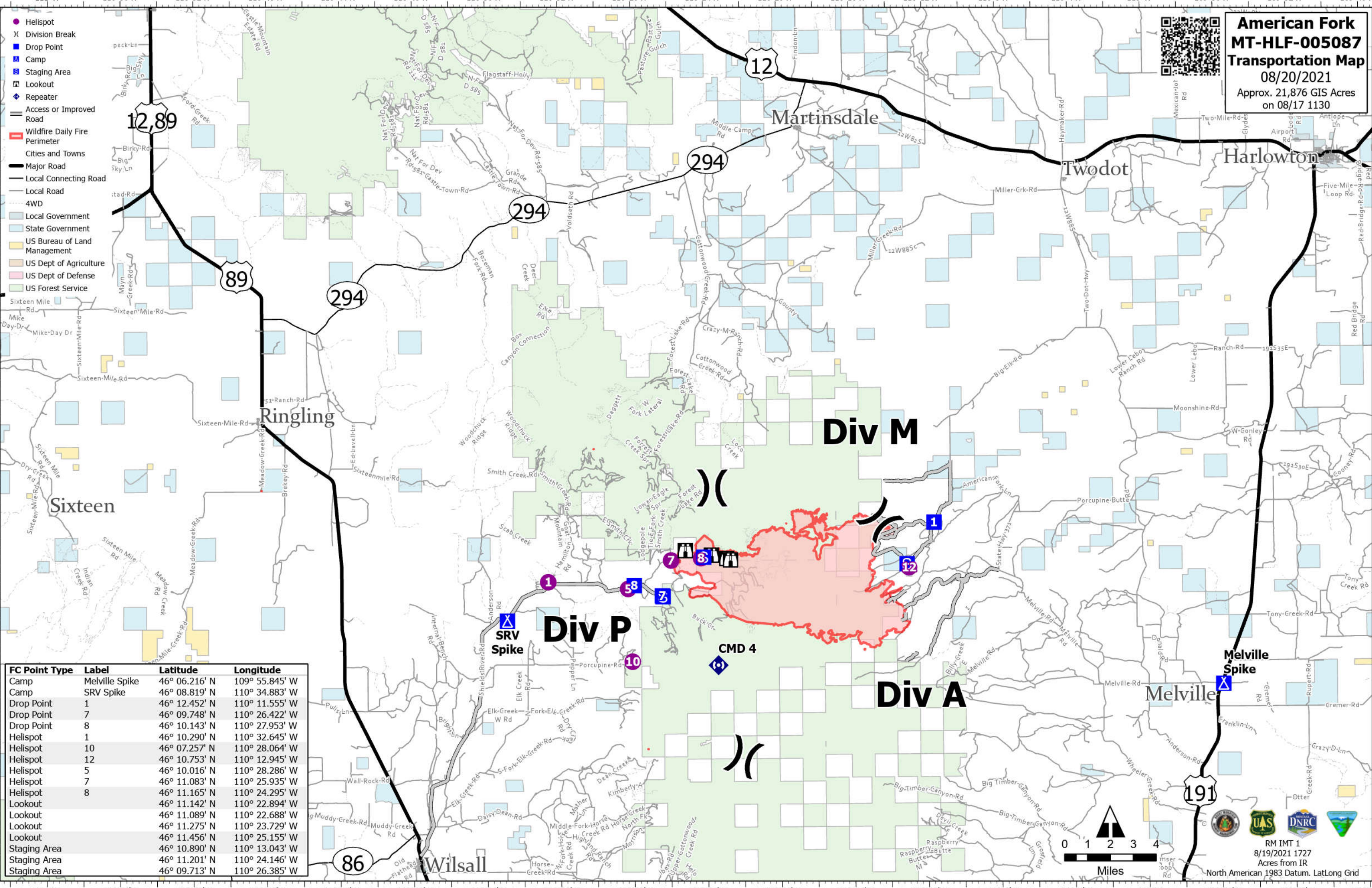
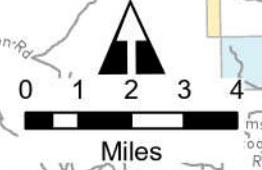


**American Fork
MT-HLF-005087
Transportation Map
08/20/2021
Approx. 21,876 GIS Acres
on 08/17 1130**



FC Point Type	Label	Latitude	Longitude
Camp	Melville Spike	46° 06.216' N	109° 55.845' W
Camp	SRV Spike	46° 08.819' N	110° 34.883' W
Drop Point	1	46° 12.452' N	110° 11.555' W
Drop Point	7	46° 09.748' N	110° 26.422' W
Drop Point	8	46° 10.143' N	110° 27.953' W
Helispot	1	46° 10.290' N	110° 32.645' W
Helispot	10	46° 07.257' N	110° 28.064' W
Helispot	12	46° 10.753' N	110° 12.945' W
Helispot	5	46° 10.016' N	110° 28.286' W
Helispot	7	46° 11.083' N	110° 25.935' W
Helispot	8	46° 11.165' N	110° 24.295' W
Lookout		46° 11.142' N	110° 22.894' W
Lookout		46° 11.089' N	110° 22.688' W
Lookout		46° 11.275' N	110° 23.729' W
Lookout		46° 11.456' N	110° 25.155' W
Staging Area		46° 10.890' N	110° 13.043' W
Staging Area		46° 11.201' N	110° 24.146' W
Staging Area		46° 09.713' N	110° 26.385' W



RM IMT 1
 8/19/2021 1727
 Acres from IR
 North American 1983 Datum. LatLong Grid