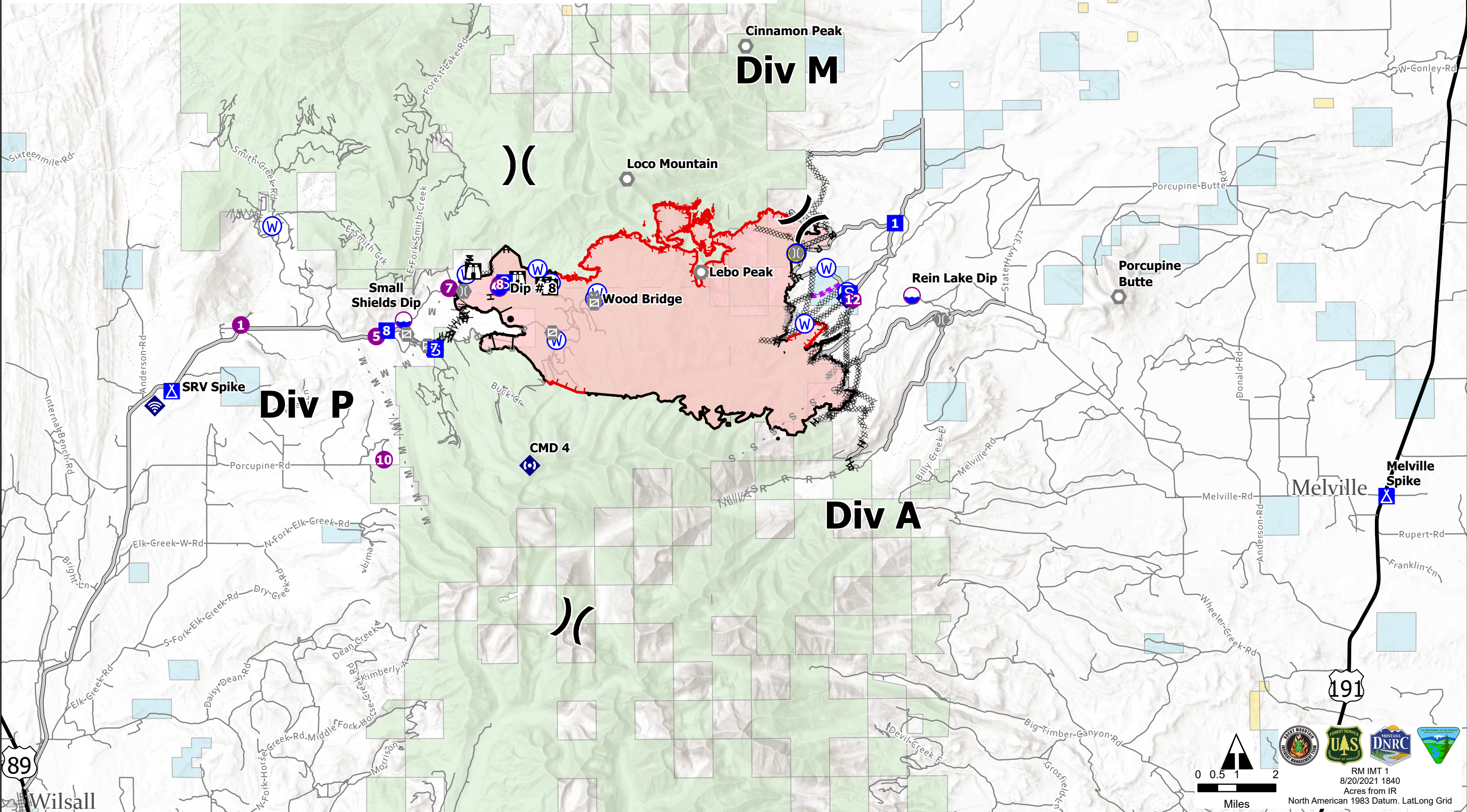




- |                  |                       |                                     |                                   |                                 |                                |
|------------------|-----------------------|-------------------------------------|-----------------------------------|---------------------------------|--------------------------------|
| ○ Dip Site       | ○ Landmark            | ○ Water Source                      | ⊗ Planned Dozer Line              | — Route                         | — 4WD                          |
| ● Helispot       | ○ Gate                | — Completed Burnout                 | ⊗ Planned Fuel Break              | — Fire Edge                     | — Local Government             |
| ⊗ Division Break | ○ Bridge              | ⊗ Completed Dozer Line              | M Planned Mixed Construction Line | — Contained Line                | — State Government             |
| ■ Drop Point     | ◆ Mobile Weather Unit | ⊗ Completed Fuel Break              | R Planned Road as Line            | — Wildfire Daily Fire Perimeter | — US Bureau of Land Management |
| ■ Camp           | ◆ Internet Access     | H Completed Hand Line               | S Planned Secondary Line          | — Major Road                    | — US Forest Service            |
| ■ Staging Area   | ◆ Repeater            | M Completed Mixed Construction Line | — Access or Improved Road         | — Local Connecting Road         | — Cities and Towns             |
| ■ Lookout        | ◆ Hazard              | R Completed Road as Line            | — Other                           | — Local Road                    |                                |



0 0.5 1 2  
Miles

RM IMT 1  
8/20/2021 1840  
Acres from IR  
North American 1983 Datum. LatLong Grid

89  
Wilsall

191