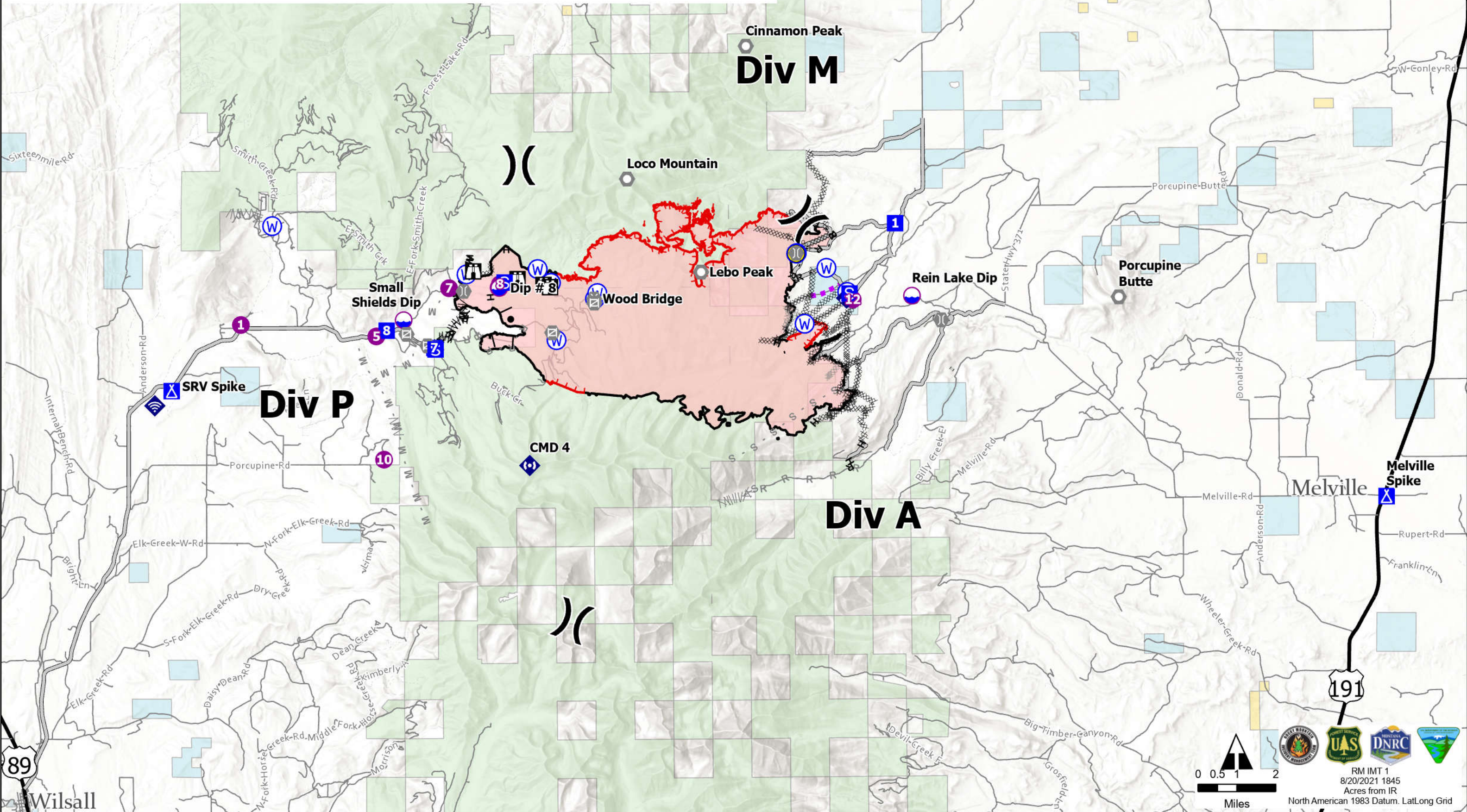


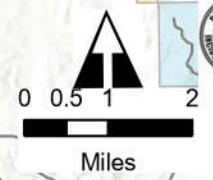


- |                |                     |                                   |                                 |                               |                              |
|----------------|---------------------|-----------------------------------|---------------------------------|-------------------------------|------------------------------|
| Dip Site       | Landmark            | Water Source                      | Planned Dozer Line              | Route                         | 4WD                          |
| Helispot       | Gate                | Completed Burnout                 | Planned Fuel Break              | Fire Edge                     | Local Government             |
| Division Break | Bridge              | Completed Dozer Line              | Planned Mixed Construction Line | Contained Line                | State Government             |
| Drop Point     | Mobile Weather Unit | Completed Fuel Break              | Planned Road as Line            | Wildfire Daily Fire Perimeter | US Bureau of Land Management |
| Camp           | Internet Access     | Completed Hand Line               | Planned Secondary Line          | Major Road                    | US Forest Service            |
| Staging Area   | Repeater            | Completed Mixed Construction Line | Access or Improved Road         | Local Connecting Road         | Cities and Towns             |
| Lookout        | Hazard              | Completed Road as Line            | Other                           | Local Road                    |                              |



89 Wilsall

191



RM IMT 1  
 8/20/2021 1845  
 Acres from IR  
 North American 1983 Datum. LatLong Grid