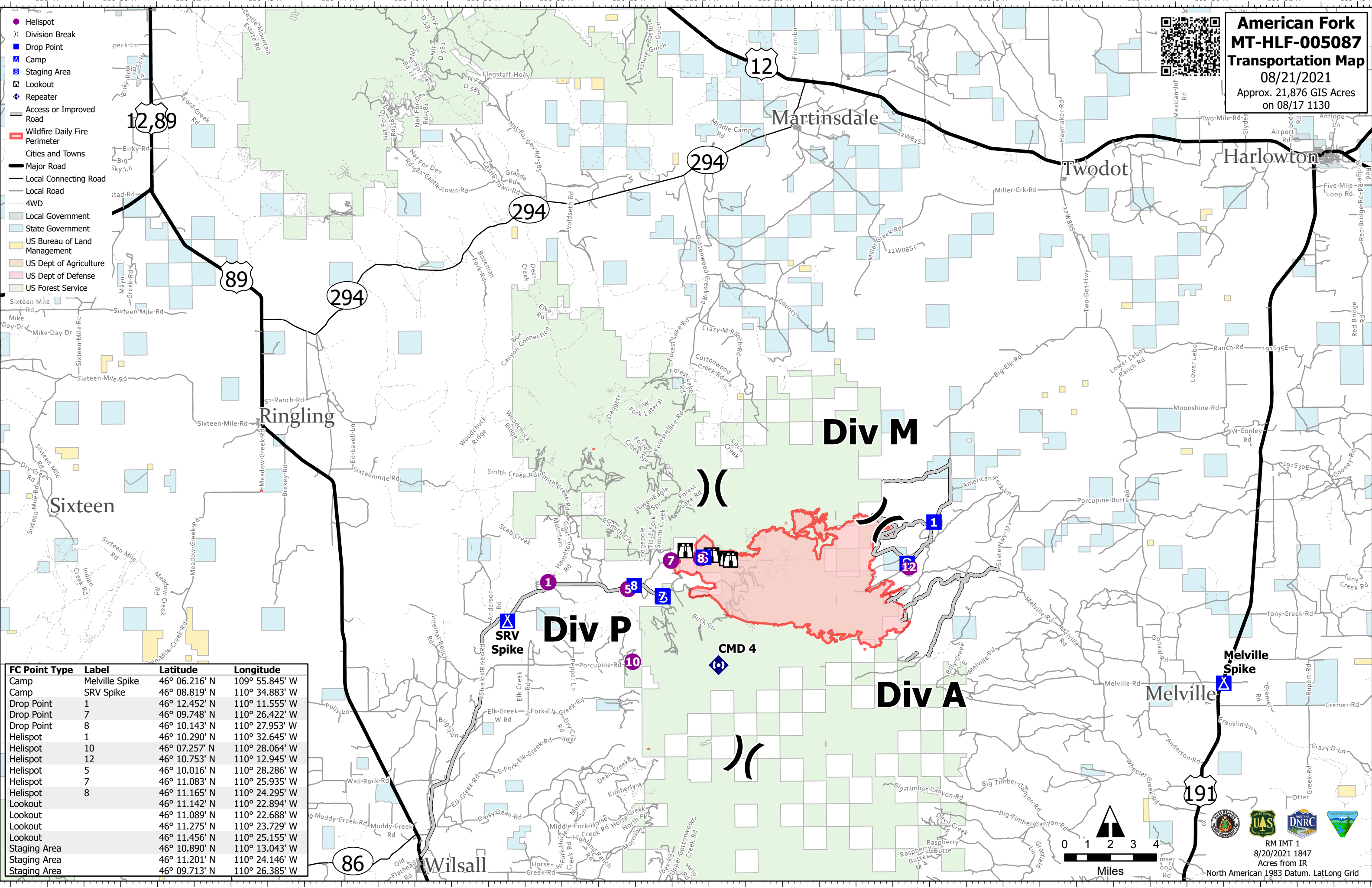
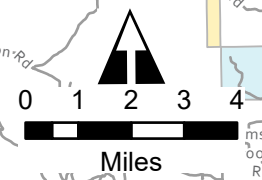


**American Fork  
MT-HLF-005087  
Transportation Map**  
08/21/2021  
Approx. 21,876 GIS Acres  
on 08/17 1130



| FC Point Type | Label          | Latitude      | Longitude      |
|---------------|----------------|---------------|----------------|
| Camp          | Melville Spike | 46° 06.216' N | 109° 55.845' W |
| Camp          | SRV Spike      | 46° 08.819' N | 110° 34.883' W |
| Drop Point    | 1              | 46° 12.452' N | 110° 11.555' W |
| Drop Point    | 7              | 46° 09.748' N | 110° 26.422' W |
| Drop Point    | 8              | 46° 10.143' N | 110° 27.953' W |
| Helispot      | 1              | 46° 10.290' N | 110° 32.645' W |
| Helispot      | 10             | 46° 07.257' N | 110° 28.064' W |
| Helispot      | 12             | 46° 10.753' N | 110° 12.945' W |
| Helispot      | 5              | 46° 10.016' N | 110° 28.286' W |
| Helispot      | 7              | 46° 11.083' N | 110° 25.935' W |
| Helispot      | 8              | 46° 11.165' N | 110° 24.295' W |
| Lookout       |                | 46° 11.142' N | 110° 22.894' W |
| Lookout       |                | 46° 11.089' N | 110° 22.688' W |
| Lookout       |                | 46° 11.275' N | 110° 23.729' W |
| Lookout       |                | 46° 11.456' N | 110° 25.155' W |
| Staging Area  |                | 46° 10.890' N | 110° 13.043' W |
| Staging Area  |                | 46° 11.201' N | 110° 24.146' W |
| Staging Area  |                | 46° 09.713' N | 110° 26.385' W |



RM IMT 1  
8/20/2021 1847  
Acres from IR  
North American 1983 Datum. LatLong Grid