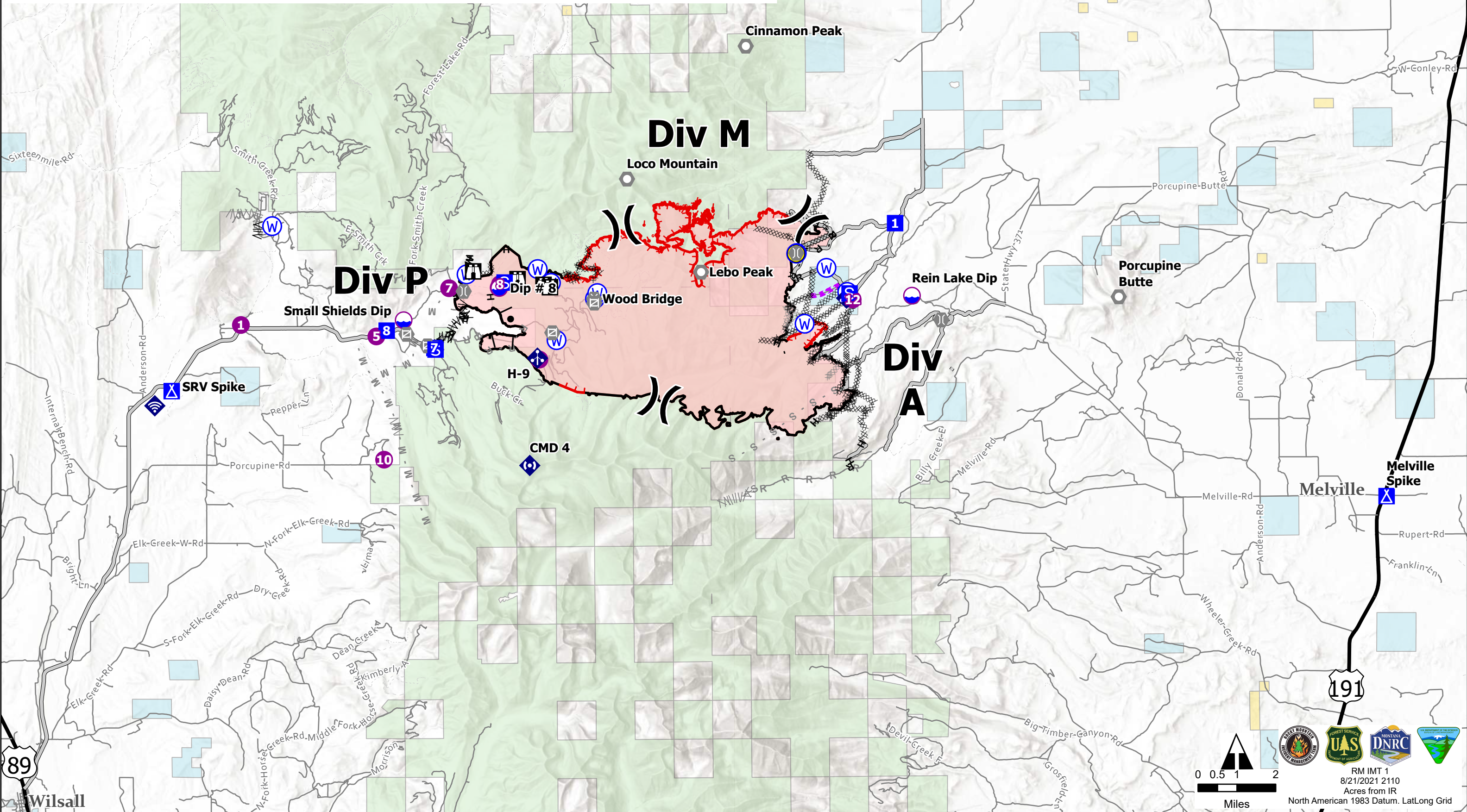




- | | | | | | |
|----------------|---------------------|-----------------------------------|---------------------------------|-------------------------------|------------------------------|
| Dip Site | Landmark | Water Source | Planned Dozer Line | Route | 4WD |
| Helispot | Gate | Completed Burnout | Planned Fuel Break | Fire Edge | Local Government |
| Division Break | Bridge | Completed Dozer Line | Planned Mixed Construction Line | Contained Line | State Government |
| Drop Point | Mobile Weather Unit | Completed Fuel Break | Planned Road as Line | Wildfire Daily Fire Perimeter | US Bureau of Land Management |
| Camp | Internet Access | Completed Hand Line | Planned Secondary Line | Major Road | US Forest Service |
| Staging Area | Repeater | Completed Mixed Construction Line | Access or Improved Road | Local Connecting Road | Cities and Towns |
| Lookout | Hazard | Completed Road as Line | Other | Local Road | |



89
 Wilsall



RM IMT 1
 8/21/2021 2110
 Acres from IR
 North American 1983 Datum. LatLong Grid