

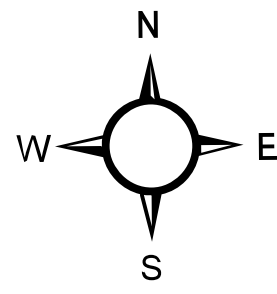
Operations

American Fork
MT-HLF-005087
8/24/2021 Day

21,892 acres at 8/20/2021 2120 hrs

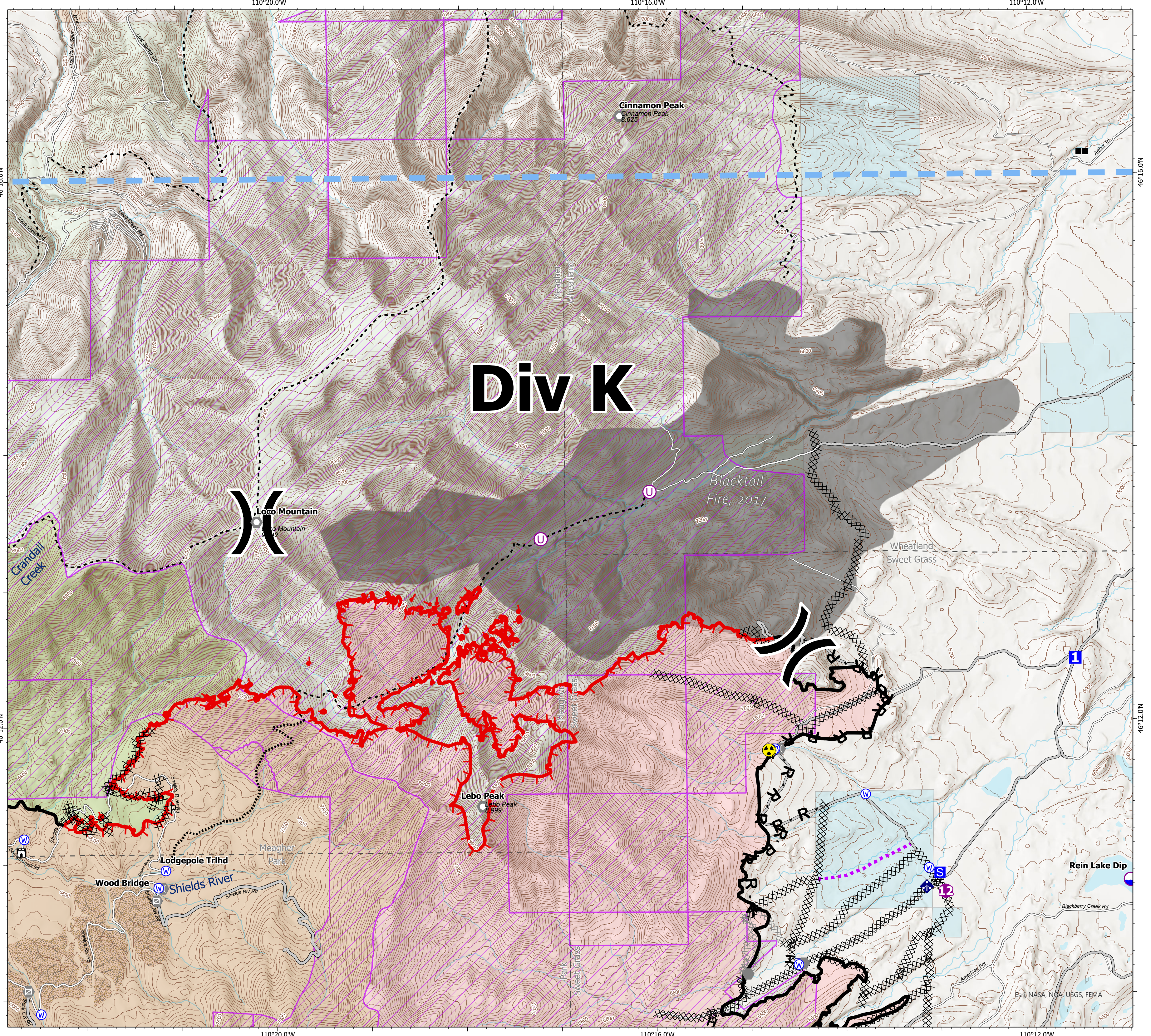


- Dip Site
- Helispot
- Unimproved Landing Area
- Division Break
- Drop Point
- Staging Area
- Lookout
- Other
- Landmark
- Gate
- Bridge
- Mobile Weather Unit
- Hazard
- Water Source
- Pump
- Completed Dozer Line
- Completed Hand Line
- Completed Road as Line
- Planned Dozer Line
- Access or Improved Road
- Route
- Temporary Flight Restriction
- Fire Edge
- Contained Line
- Paved Roads
- Dirt (Not Paved)
- FS - FOREST SERVICE
- P - PRIVATE
- Lewis & Clark Trail
- Stock Trails
- Private Roads
- Inventoried Roadless Areas
- County Boundary
- Fuels Treatment
- Wildfire Daily Fire Perimeter
- Fire History Polygon
- Other Fed Government
- State MT
- Custer Gallatin National Forest
- Helena-Lewis and Clark National Forest



B Kirk
8/23/2021 2013

North American 1983 Datum. LatLong Grid



Esri, NASA, NGA, USGS, FEMA