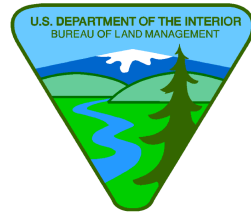


Operations

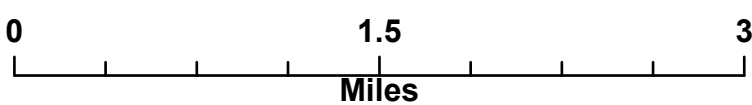
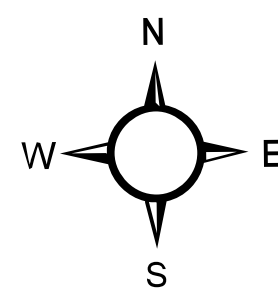
American Fork
MT-HLF-005087

8/24/2021 Day

21,892 acres at 8/20/2021 2120 hrs

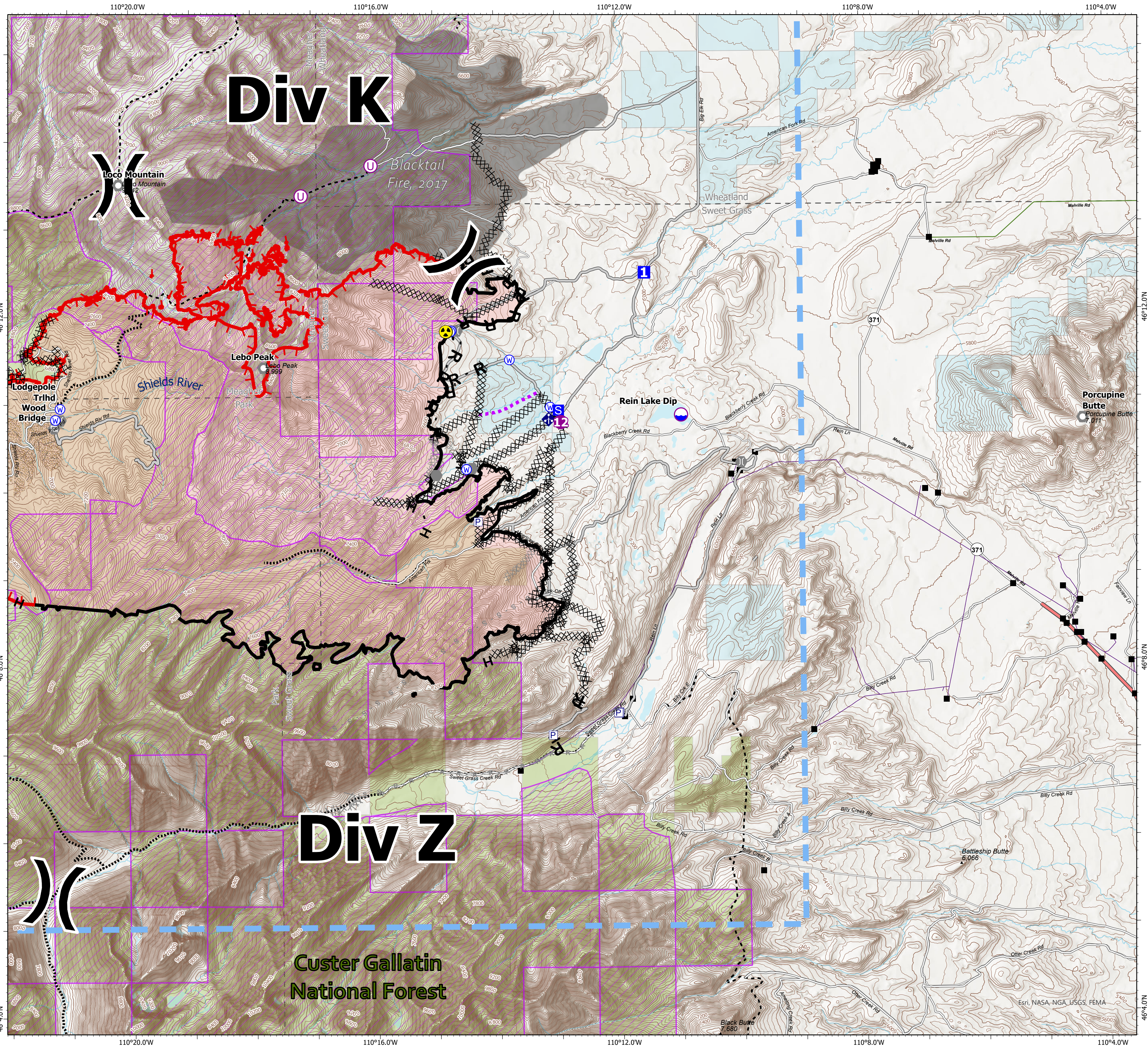


- Dip Site
- Helispot
- Unimproved Landing Area
- Division Break
- Drop Point
- Staging Area
- Other
- Landmark
- Gate
- Bridge
- Mobile Weather Unit
- Hazard
- Water Source
- Pump
- Completed Dozer Line
- Completed Hand Line
- Completed Road as Line
- Planned Dozer Line
- Planned Fuel Break
- Planned Road as Line
- Planned Secondary Line
- Access or Improved Road
- Route
- Temporary Flight Restriction
- Fire Edge
- Contained Line
- Distribution Line
- Secondary Highway
- Paved Roads
- Dirt (Not Paved)
- US Route Not Paved
- FS - FOREST SERVICE
- P - PRIVATE
- Lewis & Clark Trail
- Stock Trails
- Bicycle Trails
- Private Roads
- Inventoried Roadless Areas
- County Boundary
- Fuels Treatment
- Wildfire Daily Fire Perimeter
- Fire History Polygon
- State MT
- Custer Gallatin National Forest
- Helena-Lewis and Clark National Forest



B Kirk
8/23/2021 2015

North American 1983 Datum. LatLong Grid



Div K

Div Z

Custer Gallatin National Forest