

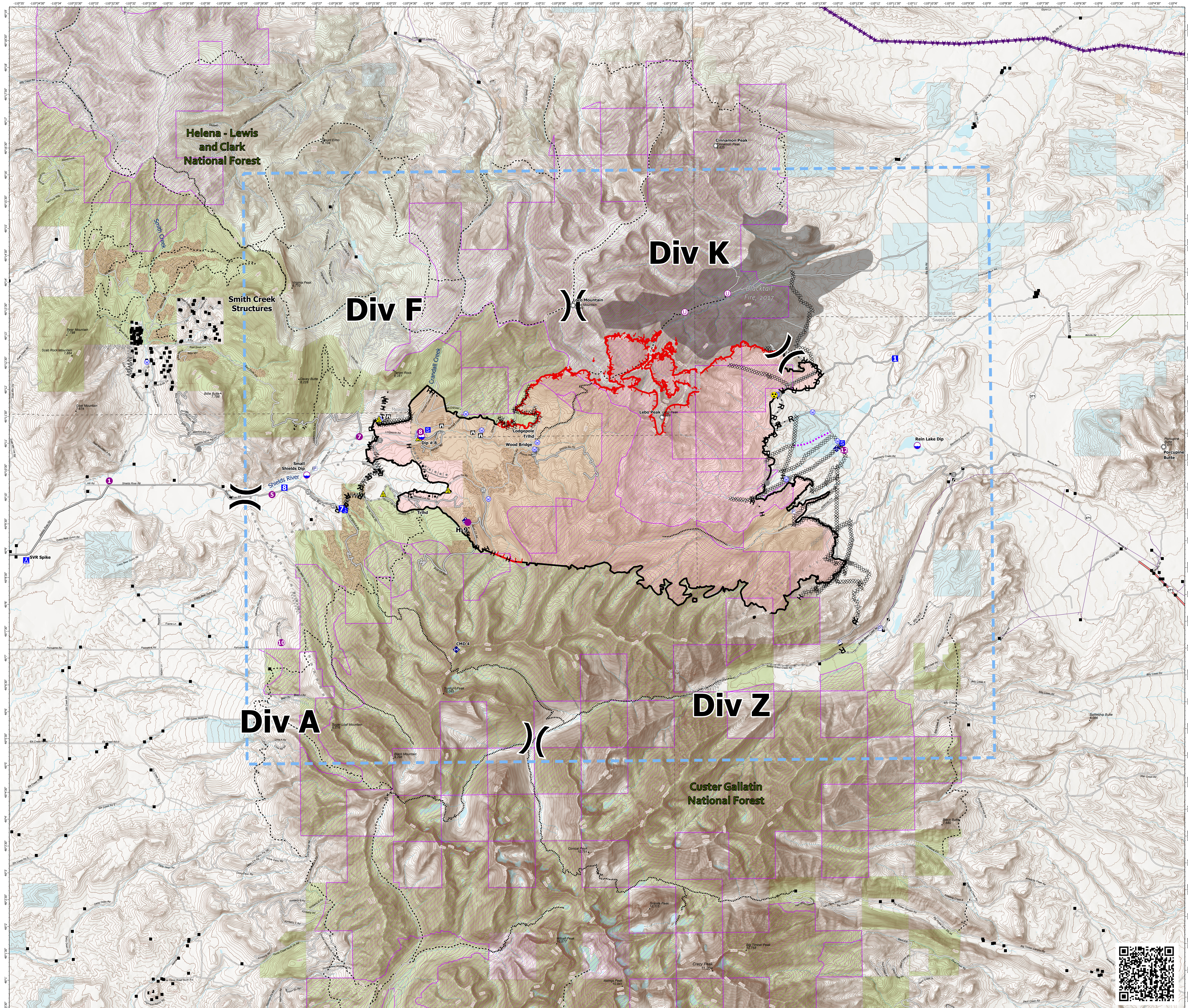
Operations Map

American Fork
MT-HLF-005087
8/24/2021 Day

21,892 acres at 8/20/2021 2120 hrs



- ▲ Gap; Summit
- Structure- State Data
- Dip Site
- Helispot
- Unimproved Landing Area
- × Division Break
- Drop Point
- Camp
- Staging Area
- Lookout
- Other
- Landmark
- Gate
- Bridge
- ◆ Mobile Weather Unit
- ◆ Internet Access
- ◆ Repeater
- ▲ Safety Zone
- Hazard
- Water Source
- Pump
- Water Tank
- ⊔ Completed Burnout
- ⊗ Completed Dozer Line
- ⊔ Completed Fuel Break
- ⊔ Completed Hand Line
- ⊔ Completed Mixed Construction Line
- R Completed Road as Line
- ⊔ Planned Burnout
- ⊗ Planned Dozer Line
- ⊔ Planned Fuel Break
- ⊔ Planned Mixed Construction Line
- ⊔ Planned Road as Line
- ⊔ Planned Secondary Line
- Access or Improved Road
- Other
- Route
- Temporary Flight Restriction
- Fire Edge
- Contained Line
- Wildfire Daily Fire Perimeter
- Fuels Treatment
- Inventoried Roadless Areas
- Fire History Polygon
- County Boundary
- Other Fed Government
- State MT
- Custer Gallatin National Forest
- Helena-Lewis and Clark National Forest
- Secondary Highway
- Paved Roads
- Dirt (Not Paved)
- US Route Not Paved
- Trails
- Stock Trails
- Transmission Line
- Distribution Line



B Kirk
8/23/2021 8:02 PM
North American 1983 Datum, LatLong Grid

