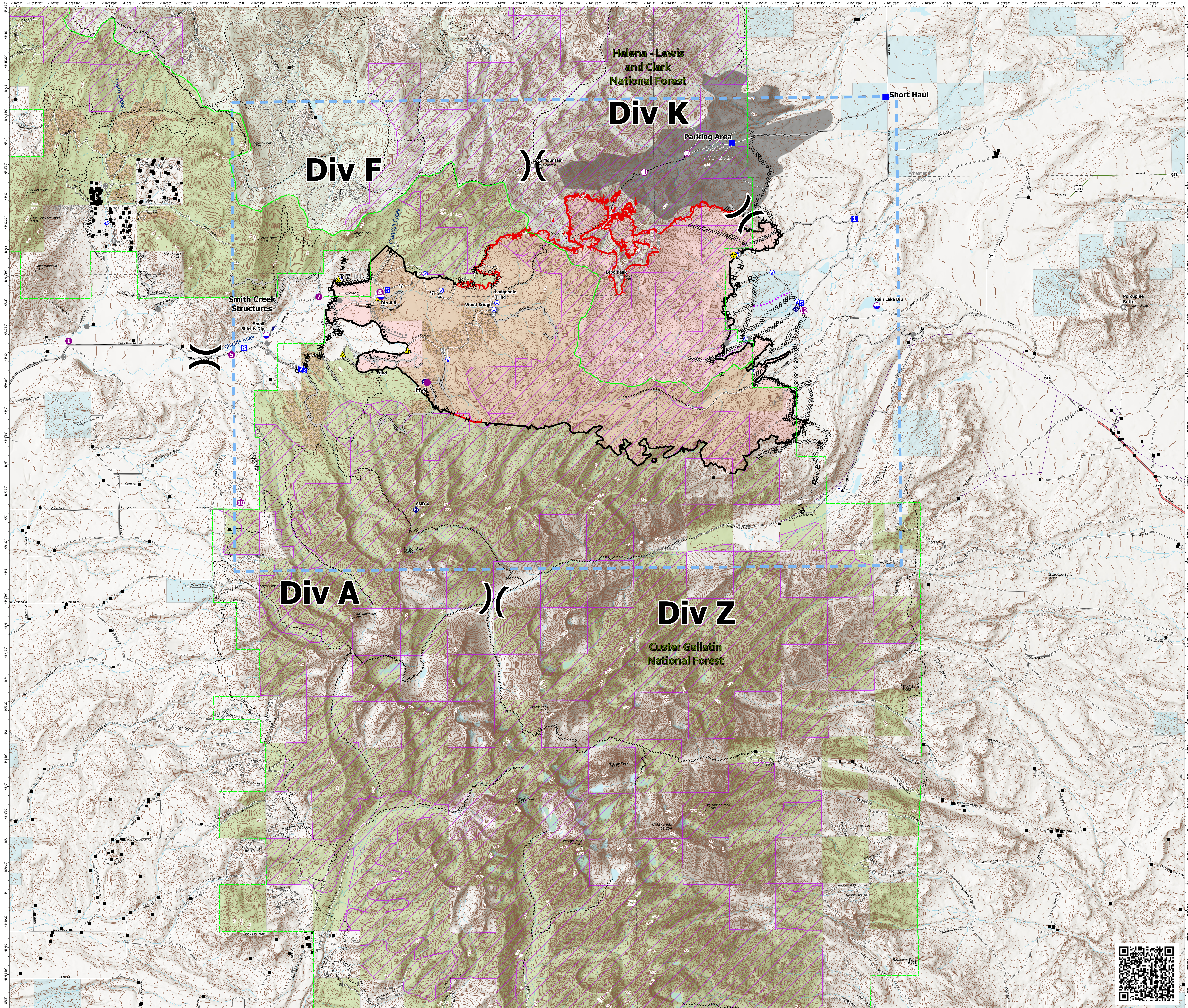


Operations Map

American Fork
MT-HLF-005087
8/25/2021 Day
21,892 acres at 8/20/2021 2120 hrs



- ▲ Gap; Summit
- Structure- State Data
- Dip Site
- Helispot
- Unimproved Landing Area
- ⌘ Division Break
- Drop Point
- Staging Area
- Lookout
- Other
- Landmark
- Gate
- Bridge
- ◆ Mobile Weather Unit
- ◆ Repeater
- ▲ Safety Zone
- ◆ Hazard
- Water Source
- Pump
- Water Tank
- ⌘ Completed Burnout
- ⌘ Completed Dozer Line
- ⌘ Completed Fuel Break
- ⌘ Completed Hand Line
- ⌘ Completed Mixed Construction Line
- ⌘ Completed Road as Line
- ⌘ Planned Burnout
- ⌘ Planned Dozer Line
- ⌘ Planned Fuel Break
- ⌘ Planned Mixed Construction Line
- ⌘ Planned Road as Line
- ⌘ Planned Secondary Line
- Access or Improved Road
- Other
- Route
- Temporary Flight Restriction
- Fire Edge
- Contained Line
- Wildfire Daily Fire Perimeter
- Fuels Treatment
- Inventoried Roadless Areas
- Fire History Polygon
- County Boundary
- State MT
- Custer Gallatin National Forest
- Helena-Lewis and Clark National Forest
- Secondary Highway
- Paved Roads
- Dirt (Not Paved)
- US Route Not Paved
- ⋯ Trails
- ⋯ Stock Trails
- Distribution Line
- Administrative FS Boundary



B Kirk
8/24/2021 7:14 PM
North American 1983 Datum, LatLong Grid

