

American Fork

MT-HLF-005087

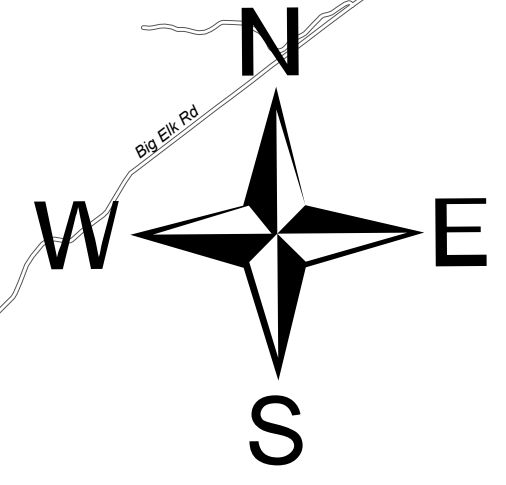
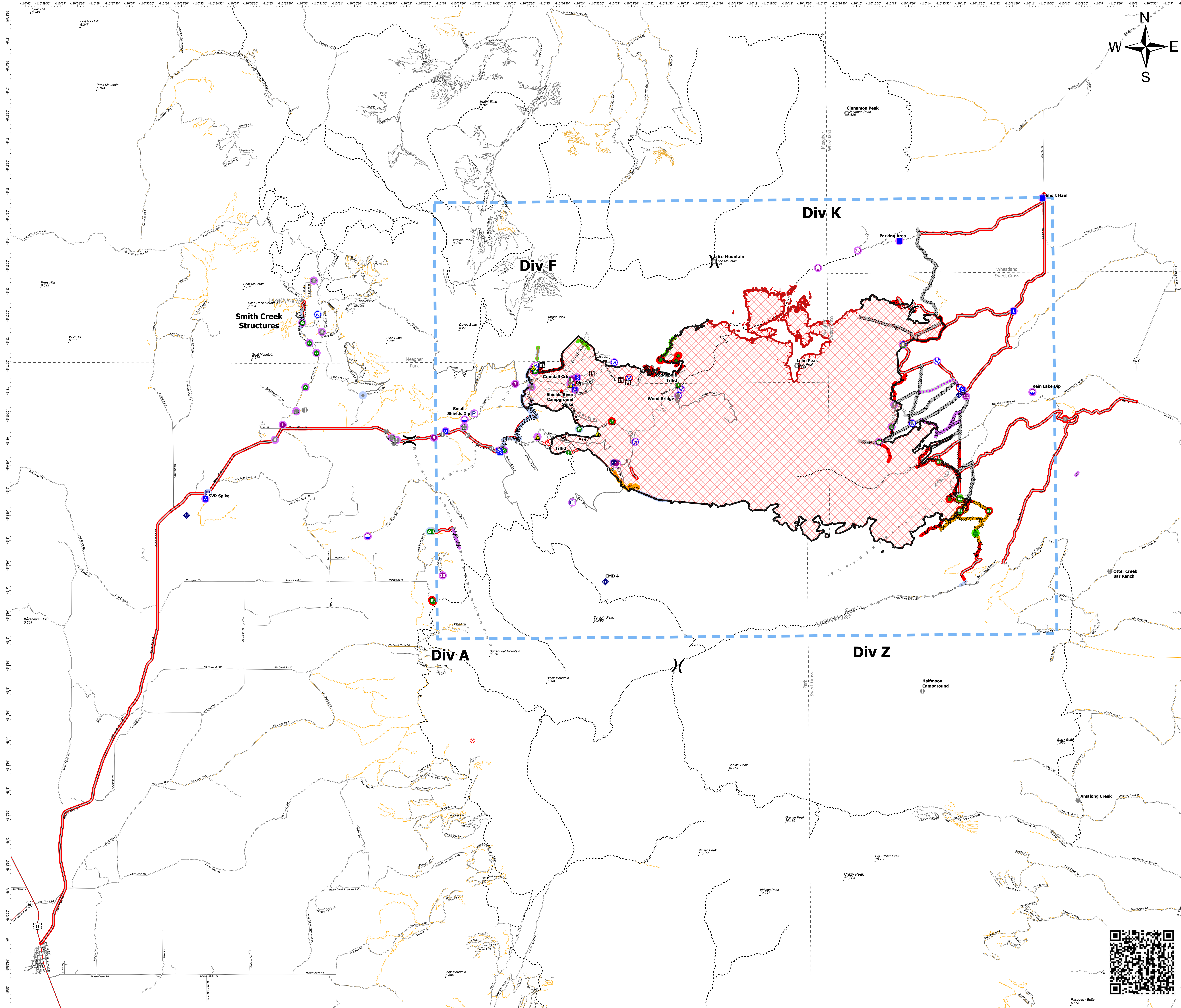
Repair Map

Approx. 21,892 GIS Acres
8/20/2021 2120 hrs

Operational Shift
8/28/2021



- Repair Status Point**
 - Completed - Inspected
 - In Use - Fire Management
 - Repair Needed
 - No Repair Needed
 - Other - See Comments
 - Unknown
- Repair Status Line**
 - Completed - Inspected
 - In Use - Fire Management
 - Completed - Ready for Inspection
 - Repair Needed
 - No Repair Needed
 - Other - See Comments
 - Unknown
- Infrastructure**
 - Pump
 - Water Tank
 - Dip Site
 - Hellspot
 - Unimproved Landing Area
 - Division Break
 - Drop Point
 - Camp
 - Staging Area
 - Lookout
 - Hot Spot - Spot Fire
 - Fire Origin
 - Value at Risk
 - Other
 - Landmark
 - Gate
 - Bridge
 - Water Development or Draft Site
 - Structure Wrap
 - Stream Crossing
 - Road Repair
 - Resource Location
 - Repair Point
 - Landing or Log Deck
 - Fence - Cut/Damaged
 - Dozer Push
 - Culvert
 - Mobile Weather Unit
 - Internet Access
 - Repeater
 - Safety Zone
 - Hazard
 - Water Source
- Construction**
 - Completed Burnout
 - Completed Dozer Line
 - Completed Fuel Break
 - Completed Hand Line
 - Completed Mixed Construction Line
 - Completed Road as Line
 - Planned Burnout
 - Planned Dozer Line
 - Planned Fuel Break
 - Planned Mixed Construction Line
 - Planned Road as Line
 - Planned Secondary Line
 - Access or Improved Road
 - Fence
 - Other
 - Repair Line
 - Route
 - Temporary Flight Restriction
- Perimeters**
 - Fire Edge
 - Contained Line
 - Wildfire Daily Fire Perimeter
- Trails**
 - Trails
 - Stock Trails
 - Primary Highway
 - Secondary Highway
 - Paved Roads
 - Dirt (Not Paved)
 - US Route Not Paved
 - Private Roads
 - County Boundary



B Kirk
Date Exported: 8/27/2021 8:47 PM
North American 1983 Datum. LatLong Grid

