

# INCIDENT ACTION PLAN

Saturday, July 24, 2021 0600-2100

## Divide Complex

MT-HLF-005079 P1N5FU (0115)

## American Fork

MT-HLF-005087 P1N57E (0115)



[2021.divide.finance@firenet.gov](mailto:2021.divide.finance@firenet.gov)

[2021.americanfork.finance@firenet.gov](mailto:2021.americanfork.finance@firenet.gov)

Morning Ops Briefing (0700) Zoom link:

Zoom ID: 160 317 4872 Dial in # 1-551-285-1373



QR code for Check-in



QR code for Divide Complex Maps



QR code for American Fork Maps

# INCIDENT OBJECTIVES

ICS-202

1. INCIDENT NAME

**Divide Complex and  
American Fork Fire**

2. DATE  
PREPARED

**07/23/2021**

3. TIME  
PREPARED

**1330**

4. OPERATIONAL PERIOD (DATE/TIME)

**Saturday, July 24, 2021 0600-2100**

5. GENERAL CONTROL OBJECTIVES FOR THE INCIDENT (INCLUDE ALTERNATIVES)

## Management Objectives

- 1) Protection of human life and safety is the first priority for all actions taken on a wildfire and can overrule all other strategic/management objectives and incident requirements.
- 2) Base management decisions on meeting objectives while also minimizing the risk of COVID-19 exposures to responders and the public. COVID-19 considerations may alter how you meet goals but should not lead to higher risk tactics.
- 3) Maintain and strengthen relationships with the Helena-Lewis and Clark NF, Custer-Gallatin NF, private landowners, the public, cooperators and partners by providing timely and accurate information.
- 4) Use management actions that ensure fire personnel safety from contact with bears through compliance with the Food Storage Special Order.
- 5) Protect the unique attributes of impacted watersheds through actions that minimize sedimentation and invasive species movement.
- 6) Protect impact to cultural resources through consultation with local forest specialists.

## Control Objectives

### Divide Complex

- 1) Protection of human life and safety is the first priority for all actions taken and shall override all other incident control objectives. Evaluate risk vs. benefit in strategic and tactical planning and only commit operational resources to actions that have the highest probability of success.
- 2) Protect Tenderfoot Experimental Forest infrastructure within the tenderfoot drainage.
- 3) Protect the communities of Belt Park, Deer Creek Estates, Monarch, Neihart and the Hwy 89 corridor to avoid loss or damage to private lands and critical infrastructure.
- 4) Use mechanized equipment to establish and improve control lines where approved to minimize risk and exposure to firefighting resources.
- 5) Provide initial attack resources to respond to any new ignitions within the TFR area to limit potential size and growth.

### American Fork Fire

- 1) Protection of human life and safety is the first priority for all actions taken and shall override all other incident control objectives. Evaluate risk vs. benefit in strategic and tactical planning and only commit operational resources to actions that have the highest probability of success.
- 2) Keep fire on Forest Service lands to protect and limit impact to adjacent landowner property and values at risk.
- 3) Provide initial attack resources to respond to any new ignitions within the TFR area to limit potential size and growth.

6. WEATHER FORECAST FOR OPERATIONAL PERIOD

### **\*\*FIRE WEATHER WATCH in effect Sunday Afternoon and Evening\*\***

Today will be a couple degrees warmer with noticeably weaker winds than what we saw yesterday. Minimum RHs will fall to the low teens or near 10 percent under abundant sunshine. Very little recovery in humidity is expected overnight with max RH values only around 20 to 30 percent in the mid and upper elevations and 30-40 percent in the valley bottoms. Critical fire weather conditions are possible Sunday as winds increase out of the west with warmer temps and min RH values around 12 percent. Fire Weather Watch is in effect for Sunday.

7. GENERAL MESSAGE

**See the attached Safety Message for more information.**

ORGANIZATION LIST (ICS 203)

MEDICAL PLAN (ICS 206)

WEATHER SPOT FORECAST

ASSIGNMENT LIST (ICS 204)

AIR OPS. SUMMARY (ICS 220)

FIRE BEHAVIOR FORECAST

COMMUNICATION PLAN (ICS 205)

SAFETY MESSAGE

INCIDENT EMERGENCY PLAN

ICS 202

9. PREPARED BY (PLANNING SECTION CHIEF)

**Carol O'Bryan**

10. APPROVED BY (INCIDENT COMMANDER)

**Deborah Beard**

*Deborah Beard, ILT2*

ORGANIZATION ASSIGNMENT LIST		8.	Operations Section		
<b>1. Incident Name</b>		Lead Operations		Jeff Schardt	
<b>Divide Complex (MT-HLF-005079) American Fork (MT-HLF-005087)</b>		Planning Operations		Shawn Nagle, Kevin Grodi (t)	
		Field Operations		Tyler Van Ormer, Bert Plante (t)	
		Branch I		Brian Elam	
<b>2. Date</b>	<b>3. Time</b>	Branch III		Josh Graham	
7/23/2021	1345				
<b>4. Operational Period</b>		<b>a.</b>	<b>Divisions/Groups</b>		
Saturday, July 24, 2021 DAY (0600 – 2100)		<b>BRANCH</b>	<b>FIRE</b>	<b>DIVISION</b>	<b>LEADER</b>
		I	American Fork		OPBD – Brian Elam
<b>5.</b>	<b>Incident Commander and Staff</b>			A	Abe Philipson
Incident Commander	Debbie Beard, Marty Bentley (Deputy), Michael Cheek (t)			P	Unstaffed
				M	Steve Gray
Liaison Officer	Mike Wright, Bobby Claybrook (t), Jeff Gardner (t), Bradley Cooper (t)	II	Ellis		
Safety Officer	Buddy Kelley, Paul Churchill, Larry Holsamback, Jeff Henderson (t)			Q	Matt Johnson, Matt Kindt (t)
Information Officer	Michelle Burnett (v), Andy Gray, Brook Smith (t), Trish Boles (t), Cathy Dowd (t) (v), Ray Butler (t), Emily Cleaver (t) (v)			E	Matt Johnson, Brian Delasantos (t)
		III	Balsinger		OPBD – Josh Graham
<b>6.</b>	<b>Agency Reps</b>			I	Greg Salansky, Matt Moe (t)
Agency Administrator	Carol Hatfield			T	Danny Gore, Jesse Holguin
Agency Administrator	Alex Sienkiewicz			Structure	TK Kennedy, Kevin Grodi (t)
DNRC	Jocee Hedrick, Heidi Crum			Initial Attack	Mike Willardson
<b>7.</b>	<b>Planning Section</b>	<b>b.</b>	<b>Air Operations Branch</b>		
Chief	Carol O'Bryan, Thomas Barrett, Jessica Hollingsworth (v), Kelly Russell (t)	Air Operation Branch Director		Tim Elder	
Resources Unit	Melonie Sellers, Laila Lienesch, Jocelyn Howell (t)	Air Support Group Supervisor			
Situation Unit	Chris Evans (v)	Air Tactical Group Supervisor		Steve Little	
FBAN	Kelly Cagle	Helibase Manager		John Nobles, Josh Bardwell (t)	
IMET	Cory Mottice				
GISS	Christian Vose (v), Gregg Slezak (v), Ethan Robertson	<b>9.</b>	<b>Logistics Section</b>		
Demob Unit	Jeff DeMatteis	Chief		Jamie Copple	
Status Check-In	Paula Hensley (t)	Deputy		James Aldridge	
ITSS	James Ehrlich, Kevin Curry (v), Rusty Brown, Jeremy Albright (t)	Supply Unit		Lemuel Cooksey	
Training	Al Hoke (v)	Facilities Unit			
		Ground Support		Todd Waller	
<b>10.</b>	<b>Finance Section</b>	Equipment Manager		Chad Wiley (t)	
Chief	Reggie Lanier, Jason Gillis (t)	Ordering Manager (Am. Fork)		Sherri Kite	
		Ordering Manager (Divide)		Leigh Ostin (t)	
Time Unit	Laura Wilson	Receiving & Distrib. Mgr.		Donnie Norvell,	
Cost Unit	Marlene Hudson	Communications Unit		George Rosenthal, Shannon Herring (t)	
Comp/Claims	Terri McDonald (v)	Medical Unit Leader		Tim Exline, Sherri McDougal (t)	
		Security Manager		Greg Blanks, Sasha Herrin	
Prepared by: Laila Lienesch, RESL Approved by: Carol O'Bryan, PSC2					



Submit WX Obs

## INCIDENT Weather Forecast

**FORECAST NO:** 2  
**PREDICTION FOR:** Saturday  
**NAME OF FIRE:** American Fork/Divide Complex  
**UNIT:** Helena Lewis & Clark NF  
**SHIFT DATE:** July 24, 2021  
**SIGNED:** Cory Mottice  
**FORECAST ISSUED:** 1800 July 23, 2021  
**Incident Meteorologist**

### **\*\*FIRE WEATHER WATCH in effect Sunday Afternoon and Evening\*\***

**WEATHER DISCUSSION:** Today will be a couple degrees warmer with noticeably weaker winds than what we saw yesterday. Minimum RHs will fall to the low teens or near 10 percent under abundant sunshine. Very little recovery in humidity is expected overnight with max RH values only around 20 to 30 percent in the mid and upper elevations and 30-40 percent in the valley bottoms. Critical fire weather conditions are possible Sunday as winds increase out of the west with warmer temps and min RH values around 12 percent. Fire Weather Watch is in effect for Sunday.

### **WEATHER FORECAST FOR THE AMERICAN FORK FIRE:**

**WEATHER:** Sunny and very dry today.

**TEMPERATURES:** 74-79 ridges and 80-84 valley bottoms

**HUMIDITY:** Minimums 14 to 18%

**20 FT WINDS:**

**RIDGETOP** - West 10 to 15 mph with gusts to 20 mph.

**SLOPE/VALLEY** - Upslope/upvalley before 0900 becoming W 8-12 mph.

**HAINES INDEX:** 5 (Moderate chance of plume dominated activity)

**CHANCE OF WETTING RAIN (> .10):** 0%

**STABILITY/INVERSION:** Weak inversion breaking by 0900.

### **WEATHER FORECAST FOR THE DIVIDE COMPLEX:**

**WEATHER:** Sunny and very dry today.

**TEMPERATURES:** 74-80 ridges and 82-86 valley bottoms

**HUMIDITY:** Minimums 12 to 16%

**20 FT WINDS:**

**RIDGETOP** - West 10 to 15 mph with gusts to 20 mph.

**SLOPE/VALLEY** - Upslope/upvalley before 0900 becoming W 8-12 mph.

**HAINES INDEX:** 5 (Moderate chance of plume dominated activity)

**CHANCE OF WETTING RAIN (> .10):** 0%

**STABILITY/INVERSION:** Weak inversion breaking by 0900.

### **SATURDAY NIGHT AND SUNDAY:**

Very poor RH recoveries are expected again Saturday night. Valley winds: downslope / downvalley 4-8 mph. Ridge winds: W at 10-15 mph. Fire Weather Watch in effect for Sunday with warm, dry, and breezy conditions. Minimum RHs will drop to near 10 percent with west winds around 15 to 25 mph.

**FIRE BEHAVIOR FORECAST**

<b>FORECAST NUMBER:</b> # 2	<b>TYPE OF FIRE:</b> Wildland
<b>FIRE NAME:</b> American Fork / Divide Complex	<b>OPERATIONAL PERIOD:</b> 07/24/2021 Day Shift
<b>DATE ISSUED:</b> 07/23/2021	<b>TIME ISSUED:</b> 2000
<b>UNT:</b> Helena / Lewis and Clark NF and Guster / Gallatin NF	<b>WRITTEN:</b> Kelly Cagle FBAN

**FUEL ASSUMPTIONS:** The major fuel types found on the American Fork/Divide Complex are Fuel Model 10 (mixed conifer with heavy dead/down) as well as areas of Fuel Model 2 (short grass w/timber) in the lower elevations. Current fuel conditions are favorable for extreme fire behavior within all fuel types, especially 100 hour and 1000 hour fuels. Live fuel moistures are low enough to contribute as well. Heavy dead and down will likely be the most problematic. ERC's are approaching all time high's for today's date.

**WEATHER SUMMARY: Reference fire weather forecast for specifics.**  
 Today will be a couple degrees warmer with noticeably weaker winds than what we saw yesterday. Minimum RHs will fall to the low teens or near 10 percent under abundant sunshine. Very little recovery in humidity is expected overnight with max RH values only around 20 to 30 percent in the mid and upper elevations and 30-40 percent in the valley bottoms

**General Fire Behavior Forecast:** Weather today will create conditions for extreme fire behavior. Fuel driven fire with uphill runs and torching or crowning should be expected wherever fuels exist for fire to consume. Long distance spotting is possible anywhere wind and slope align. General movement will be upslope or towards the east. Expect a high resistance to control. On recent days, fire has been most active between 1500 and 2000 hours. Expect activity to persist thru early evening and into the night hours.

**Specific:**

**American Fork Fire** - Recent light precip as well as bucket work has moderated fire behavior. Little to no heat showing from satellite data. Fire may continue to attempt to back from the SW corner against the westerly wind. Any heat source in unburned fuel could produce intense fire behavior today.

**Balsinger Fire** – This fire will likely continue to push hard to the north and east until it runs out of fuel or the weather changes. Any fire in timber will be intense, with group torching, short crown runs, and long range spotting likely. Grass fuels to the east will substantially reduce fire spread and represent the probable best chance for success.

**Ellis Fire** – Fire has been relatively quiet recently. Expect smoldering pockets to continue. With low RH, fire will have another opportunity to perk up today. It did not show much activity yesterday. Any heat source in direct contact with unburned fuel could produce intense fire behavior today.

**Initial Attack** – Expect any new starts to organize and quickly begin to move, especially in lower elevations with **cured** grass fuels. Rates of spread will likely be high in these fuels. Expect high resistance to control in conifer fuel today as well.

\*\*\*\*\*

Fine fuel moisture today is -	2 to 3%	<b>2 Critical Thresholds are being exceeded today!</b>
Probability of Ignition today -	90% +	(Rh and 1000 hr fuel moisture)
Max Spotting Distance Today-	¼ mile observed yesterday	<b>Haines is at 5 for today</b>

**AIR OPERATIONS** : Weak inversion should break by 0900. Smoke may pose a visibility problem early on Balsinger.

**FIRE BEHAVIOR SAFETY:** Mid-day fire behavior can pose a threat to your safety today. Make **double** sure LCES is in place should you need to engage fire during peak burning period.

## Division/Group Assignment List (ICS 204 WF)

<b>1. Incident Name:</b>		<b>3.</b>				
American Fork		Branch: <b>I</b>	Division/Group <b>A</b>			
<b>2. Operational Period:</b>						
Date/Time From: 7/24/2021	Date/Time To: 0600-2100					
<b>4. Operations Personnel</b>						
BRANCH DIRECTOR	Brian Elam	FIELD OPERATIONS	Tyler Van Ormer, Bert Plante (t)			
DIVISION/GROUP SUPERVISOR	Abe Philipson	LEAD OPERATIONS	Jeff Schardt			
		PLANNING OPERATIONS	Shawn Nagle, Kevin Grodi (t)			
<b>5. Resources Assigned this Period</b>						
Strike Team / Task Force / Resource Designator	LWD	Leader	Number Persons	Drop Off PT./Time	Pick Up PT./Time	
O-9 TFLD	8/4	Danny Lowell	1			
E-xx E621 T6	7/29	Matt Birckshire	5			
Custer Gallatin Module	7/23		10			
C-5 Oregon Woods T2	7/25	Alex Tomchak	20			
E-xx E671 HLF T6	7/25	Foster	4			
E-14 Conifer Logging T2 Doz	7/28	Justin McDonough				
O-50 SOFR		Shawn Duggar	1			
<b>6. Control Operations/Work Assignments:</b>						
<b>Task:</b> Construct fire line along the southern edge of fire and mitigate any threats  <b>Purpose:</b> Slow progress of the southern fire spread into the South Fork of American Creek  <b>End State:</b> Fire will be kept from progressing south into the Custer Gallatin NF						
<b>7. Special Instructions:</b>						
<ul style="list-style-type: none"> <li>• Coordinate with READ before heavy equipment use: there is potential for sensitive resources in this area</li> <li>• Please coordinate with READ if sensitive/archeological resources are located           <ul style="list-style-type: none"> <li>○ Please provide a picture of the artifact/site and a GPS location if found</li> <li>○ Do not post photos with Archeological resources that have location information</li> </ul> </li> <li>• <b>IN THE EVENT OF AN IWI CONTACT GREAT FALLS DISPATCH</b></li> </ul>						
<b>8. Division/Group Communication Summary</b>						
Function	Channel	RX Frequency N/W	RXTone/NAC	TX Frequency N/W	TX Tone/NAC	Mode
Command 2	2	171.5000		164.0000	107.2	A
Tactical	3	154.0700		154.0700	131.8	A
<b>9. Prepared By (Resource Unit Leader)</b>						
Melonie Sellers/Kelly Russell (PSC2 t)		<b>Approved By (Planning Section Chief)</b> Carol O'Bryan			<b>Date</b> 7/23/2021	<b>Time</b> 1800

## Division/Group Assignment List (ICS 204 WF)

<b>1. Incident Name:</b>		<b>3.</b>				
American Fork		Branch: <b>I</b>	Division/Group <b>P</b>			
<b>2. Operational Period:</b>						
Date/Time From: 7/24/2021	Date/Time To: 0600-2100					
<b>4. Operations Personnel</b>						
BRANCH DIRECTOR	Brian Elam	FIELD OPERATIONS	Tyler Van Ormer, Bert Plante (t)			
DIVISION/GROUP SUPERVISOR		LEAD OPERATIONS	Jeff Schardt			
		PLANNING OPERATIONS	Shawn Nagle, Kevin Grodi (t)			
<b>5. Resources Assigned this Period</b>						
Strike Team / Task Force / Resource Designator	LWD	Leader	Number Persons	Drop Off PT./Time	Pick Up PT./Time	
UNSTAFFED						
<b>6. Control Operations/Work Assignments:</b>						
Task: Continue to monitor by aviation and ground resources						
Purpose: Ensure previous actions implemented continue to mitigate any threats						
End State: Will continue to be monitored by aviation and ground resources						
<b>7. Special Instructions:</b>						
<ul style="list-style-type: none"> <li>• Coordinate with READ before heavy equipment use: there is potential for sensitive resources in this area</li> <li>• Please coordinate with READ if sensitive/archeological resources are located             <ul style="list-style-type: none"> <li>○ Please provide a picture of the artifact/site and a GPS location if found</li> <li>○ Do not post photos with Archeological resources that have location information</li> </ul> </li>   <li>• <b><i>IN THE EVENT OF AN IWI CONTACT GREAT FALLS DISPATCH</i></b></li> </ul>						
<b>8. Division/Group Communication Summary</b>						
Function	Channel	RX Frequency N/W	RXTone/NAC	TX Frequency N/W	TX Tone/NAC	Mode
Command 2	2	171.5000		164.0000	107.2	A
Tactical	5	163.7125		163.7125	146.2	A
<b>9. Prepared By (Resource Unit Leader)</b>		<b>Approved By (Planning Section Chief)</b>		<b>Date</b>	<b>Time</b>	
Melonie Sellers/Kelly Russell (PSC2 t)		Carol O'Bryan		7/23/2021	1800	

## Division/Group Assignment List (ICS 204 WF)

<b>1. Incident Name:</b>		<b>3.</b>				
American Fork		Branch: <b>I</b>	Division/Group <b>M</b>			
<b>2. Operational Period:</b>						
Date/Time From: 7/24/2021	Date/Time To: 0600-2100					
<b>4. Operations Personnel</b>						
BRANCH DIRECTOR	Brian Elam	FIELD OPERATIONS	Tyler Van Ormer, Bert Plante (t)			
DIVISION/GROUP SUPERVISOR	Steve Gray	LEAD OPERATIONS	Jeff Schardt			
		PLANNING OPERATIONS	Shawn Nagle, Kevin Grodi (t)			
<b>5. Resources Assigned this Period</b>						
Strike Team / Task Force / Resource Designator	LWD	Leader	Number Persons	Drop Off PT./Time	Pick Up PT./Time	
TFLD	7/30	Todd Markham	1			
E-20	7/23	Ivan Wing	3			
E-31 Gist T6	7/29	Don Wood	3			
E-44 Gist T4	7/30	Steve Gist w/EMT	3			
E-1 R Construction	7/31	Richard Deruche	3			
E-7 Whitegrass T6	8/3	Whitegrass	3			
E-10 Cedar Mountain T6	8/3	Manson w/EMT	4			
E-11 Castle Mountain T4	8/3	Joseph Meyer	3			
E-22 Austin Logging	7/28	James Austin	2			
E-38 Loomis T4	8/3	Taylor Easley w/EMT	3			
E-2 Rocky Mt. T3	8/1	Sean Riphenburg	3			
E-12 Funk Fire T6	8/5	Greg Funk	3			
E-8 Stax Factor T6	8/5	John Hoellerick	3			
<b>6. Control Operations/Work Assignments:</b>						
Task: Hold previous firing operation on east line						
Purpose: Ensure fire does not progress onto private property						
End State: Fire will be kept from progressing onto private property						
<b>7. Special Instructions:</b>						
<ul style="list-style-type: none"> <li>• Coordinate with READ before heavy equipment use: there is potential for sensitive resources in this area</li> <li>• Please coordinate with READ if sensitive/archeological resources are located                             <ul style="list-style-type: none"> <li>○ Please provide a picture of the artifact/site and a GPS location if found</li> <li>○ Do not post photos with Archeological resources that have location information</li> </ul> </li> <li>• <b>IN THE EVENT OF AN IWI CONTACT GREAT FALLS DISPATCH</b></li> </ul>						
<b>8. Division/Group Communication Summary</b>						
Function	Channel	RX Frequency N/W	RXTone/NAC	TX Frequency N/W	TX Tone/NAC	Mode
Command 2	2	171.5000		164.0000	107.2	A
Tactical	4	168.6125		168.6125	156.7	A
<b>9. Prepared By (Resource Unit Leader)</b>						
Melonie Sellers/Kelly Russell (PSC2 t)		<b>Approved By (Planning Section Chief)</b>			<b>Date</b>	<b>Time</b>
		Carol O'Bryan			7/23/2021	1800



## Division/Group Assignment List (ICS 204 WF)

1. Incident Name:		3.	
<b>Divide Complex-Ellis Fire</b>		Branch: <b>II</b>	Division/Group <b>Q</b>
2. Operational Period:			
Date/Time From: 7/24/2021	Date/Time To: 0600-2100		

4. Operations Personnel			
BRANCH DIRECTOR	To Be Determined	FIELD OPERATIONS	Tyler Van Ormer, Bert Plante (T)
DIVISION/GROUP SUPERVISOR	Matt Johnson, Matt Kindt (T)	LEAD OPERATIONS	Jeff Schardt
		PLANNING OPERATIONS	Shawn Nagle, Kevin Grodi (T)

5. Resources Assigned this Period					
Strike Team / Task Force / Resource Designator	LWD	Leader	Number Persons	Drop Off PT./Time	Pick Up PT./Time
O-2 TFLD (T)	7/25	Mason Quick	1	DP10 0700	Spike 2100
E-34 ENG6 Windsor (3 EMT's)	7/26	Kirk Bauer	3	DP10 0700	Spike 2100
E-32 ENG6 Bakken (Castle Rock)	7/29	Chase Cork	3	DP10 0700	Spike 2100
E-35 ENGB Peanut Fire 5	7/31	Dale Goodgun	3	DP10 0700	Spike 2100
E-6 WAT2 Park County	7/31	Elijah Nazari	1	DP10 0700	Spike 2100

6. Control Operations/Work Assignments:

Task: Hold and improve containment lines. Implement rehabilitation and suppression repair tactics where necessary.

Purpose: Ensure previous actions implemented continue to mitigate any threats.

End State: Fire will be kept within the containment lines

7. Special Instructions:
- Dozers currently permitted on Rocking C Ranch
  - Adhere to food storage order
  - Utilize dozers on FS land as directed by ARCH/READ
  - Spike camp is located Showdown Ski Resort
  - PACE
    - PRIMARY: Keep fire east of East Fork Road and dozer lines
    - ALTERNATE: Keep fire east of Middle Ridge Road and grader line
    - CONTINGENCY: Keep fire east of identified ridge; west of Den Gulch Spring, 4-wheel drive road to Ellis Canyon
    - EMERGENCY: Point protection, identify road system to the west
- In the event of an IWI, Contact COMMAND***

8. Division/Group Communication Summary						
	Channel	RX Frequency N/W	RXTone/NAC	TX Frequency N/W	TX Tone/NAC	Mode
Command 1	6	173.8125	107.2	168.4750	107.2	
Command 2	7	173.0375	107.2	167.3250	107.2	
Command 3	8	169.8125	107.2	164.6750	107.2	
Tactical-TAC 5	5	166.7750	107.2	166.7750	107.2	
Command Medical-Monument	10	171.5000		164.0000	103.5	
A/G Primary	13	166.6125		166.6125		

9. Prepared By (Resource Unit Leader)	Approved By (Planning Section Chief)	Date	Time
Melonie Sellers/Kelly Russell (PSC2 t)	Carol O'Bryan	7/23/2021	1830

## Division/Group Assignment List (ICS 204 WF)

<b>1. Incident Name:</b>			<b>3.</b>			
Divide Complex-Ellis Fire			<b>Branch:</b> <b>II</b>		<b>Division/Group</b> <b>E</b>	
<b>2. Operational Period:</b>						
Date/Time From: 7/24/2021		Date/Time To: 0600-2100				
<b>4. Operations Personnel</b>						
BRANCH DIRECTOR		To Be Determined		FIELD OPERATIONS		
DIVISION/GROUP SUPERVISOR		Matt Johnson, Brian Delasantos(T)		Tyler Van Ormer, Bert Plante(T)		
				LEAD OPERATIONS		
				Shawn Nagle, Kevin Grodi (T)		
				PLANNING OPERATIONS		
<b>5. Resources Assigned this Period</b>						
Strike Team / Task Force / Resource Designator		LWD	Leader	Number Persons	Drop Off PT./Time	Pick Up PT./Time
O-71 TFLD		7/29	Luke Fosness	1	DP10 0700	Spike 2100
C-8 HC2 Blue Mountain		7/24	Jesus Ramos	20	DP10 0700	Spike 2100
E-9 ENG6 Bishop		7/27	Grant Clayborn	3	DP10 0700	Spike 2100
E-18 ENG6 Bakkon		7/24	Rob Bakken	3	DP10 0700	Spike 2100
E-33 ENG6 Castle Rock-Bakkon		7/29	McCarthy Nosie	3	DP10 0700	Spike 2100
O-36 EMTF		7/24	Rich Goldman	1	DP10 0700	Spike 2100
E-60 EMTF		7/31	G. Mizrahi	1	DP10 0700	Spike 2100
O BCMG (T)		7/30	Josh Brunk	1	DP10 0700	Spike 2100
O-51 READ		7/23	Emma Chambers	1	DP10 0700	Spike 2100
O- READ			Jason Oltrogge	1	DP10 0700	Spike 2100
O-44 ARCH		7/22	James Verzuh	1	DP10 0700	Spike 2100
<b>6. Control Operations/Work Assignments:</b>						
<b>Task:</b> Hold and improve containment lines. Implement rehabilitation and suppression repair tactics where necessary.						
<b>Purpose:</b> Ensure previous actions implemented continue to mitigate any threats						
<b>End State:</b> Fire will be kept within containment lines						
<b>7. Special Instructions:</b>						
Dozers currently permitted on Rocking C Ranch						
Adhere to food storage order						
Utilize dozers on FS land as directed by ARCH/READ						
Spike camp is located at Showdown Ski Resort						
<b>PACE:</b>						
PRIMARY: Keep fire east of East Fork Road and dozer line						
ALTERNATE: Keep fire east of Middle Ridge Road and grader line						
CONTINGENCY: Keep fire east of identified ridge; west of Den Gulch Spring, 4-wheel Drive road to Ellis Canyon						
EMERGENCY: Point protection, identify road system to the west						
<b><i>In the event of an IWI, contact Command</i></b>						
<b>8. Division/Group Communication Summary</b>						
Function	Channel	RX Frequency N/W	RXTone/NAC	TX Frequency N/W	TX Tone/NAC	Mode
Command 1	6	173.8125	107.2	168.4750	107.2	
Command 2	7	173.0375	107.2	167.3250	107.2	
Command 3	8	169.8125	107.2	164.6750	107.2	
Tactical-TAC 2	2	168.2000	107.2	168.2000	107.2	
Command Medical-Monument	10	171.5000		164.0000	103.5	
A/G Primary	13	166.6125		166.6125		
<b>9. Prepared By (Resource Unit Leader)</b> s/Melonie Sellers			<b>Approved By (Planning Section Chief)</b> Carol O'Bryan		<b>Date</b> 7/23/2021	<b>Time</b> 17:30

## Division/Group Assignment List (ICS 204 WF)

<b>1. Incident Name:</b>			<b>3.</b>			
Divide Complex-Balsinger			Branch: <b>III</b>		Division/Group <b>I</b>	
<b>2. Operational Period:</b>						
Date/Time From: 7/24/2021		Date/Time To: 0600-2100				
<b>4. Operations Personnel</b>						
BRANCH DIRECTOR		Josh Graham		FIELD OPERATIONS		
DIVISION/GROUP SUPERVISOR		Greg Salansky, Matt Moe (T)		LEAD OPERATIONS PLANNING OPERATIONS		
				Tyler Van Ormer, Bert Plante (T)		
				Jeff Schardt Shawn Nagle, Kevin Grodi (T)		
<b>5. Resources Assigned this Period</b>						
Strike Team / Task Force / Resource Designator		LWD	Leader	Number Persons	Drop Off PT./Time	Pick Up PT./Time
ENG4 Bosket Excavating	E-43	7/30	R. Miller	3	Showdown Spike 0600	Showdown Spike 2100
ENG4 Brown	E-26	7/27	Nick Brown	3	Showdown Spike 0600	Showdown Spike 2100
LOG C&G Enterprises	E-65	8/3	Colton Gondiero	1	Showdown Spike 0600	Showdown Spike 2100
HETF	E-37	7/31	Mike Wirth	5	Showdown Spike 0600	Showdown Spike 2100
DUMP TRK1	E-73	8/3		1	Showdown Spike 0600	Showdown Spike 2100
SKD Bull Creek Forestry	E-71		Caheen	1	Showdown Spike 0600	Showdown Spike 2100
FELB1 J&E Contracting	E-57	8/3	Ed Jungers	1	Showdown Spike 0600	Showdown Spike 2100
FELB1 A&C Construction	E-59	8/3	Shawn Marvin	1	Showdown Spike 0600	Showdown Spike 2100
FELB1 A&L Construction	E-48	8/3	John Andrews	2	Showdown Spike 0600	Showdown Spike 2100
ENG6 Peanut Pie	E-13	7/26	Dan Wanous	3	Showdown Spike 0600	Showdown Spike 2100
SOFT	O-3.62	8/5	LarryHolsomback	1	Showdown Spike 0600	Showdown Spike 2100
EMTF	O-37	7/31	E. Kashiam	1	Showdown Spike 0600	Showdown Spike 2100
AMBO	E-55	7/31	Kalilocay Willie	2	Showdown Spike 0600	Showdown Spike 2100
<b>6. Control Operations/Work Assignments:</b>						
<p><b>TASK:</b> Implement tactics to keep fire North of the Divide Road</p> <p><b>PURPOSE:</b> Ensure fire activity does not get established South of Divide Road</p> <p><b>END STATE:</b> Fire activity will be kept North of Divide Road</p>						
<b>7. Special Instructions:</b>						
<ul style="list-style-type: none"> <li>Spike Camp is located at Showdown Ski Resort</li> <li>Minimize impact to the Belt Creek RD</li> <li>Adhere to food storage order PACE</li> </ul> <p>PACE: Primary-Hold Fire North of Divide Road  Alternate-Hold Fire North of FR 586 Road  Contingency-Hold fire north of Moose Creek Road FR204 to FR119 to FR586  Emergency-HWY89 to FR119 Sheep Creek Road  Trigger Points Currently for EVACUATION - Tillinghast Creek, FR839, Goblin Gulch for communities to the North and East of the fire.</p> <p style="text-align: center;"><b>***IN THE EVENT OF IWI CONTACT COMMAND (RADIO)***</b></p>						

## Division/Group Assignment List (ICS 204 WF)

<b>1. Incident Name:</b>				<b>3.</b>		
Divide Complex-Balsinger				<b>Branch:</b>  III	<b>Division/Group</b>  T	
<b>2. Operational Period:</b>						
Date/Time From: 7/24/2021		Date/Time To: 0600-2100				
<b>4. Operations Personnel</b>						
BRANCH DIRECTOR	Josh Graham			FIELD OPERATIONS	Tyler Van Ormer, Bert Plante (t)	
DIVISION/GROUP SUPERVISOR	Danny Gore, Jesse Holguin (t)			LEAD OPERATIONS PLANNING OPERATIONS	Jeff Schardt Shawn Nagle, Kevin Grodi (t)	
<b>5. Resources Assigned this Period</b>						
Strike Team / Task Force / Resource Designator	LWD	Leader	Number Persons	Drop Off PT./Time	Pick Up PT./Time	
TFLD (T)	O-17	7/28	Jason O'Neil	1	Showdown Spike 0600	Showdown Spike 2100
***ENG5 Belt VFD	E-2	7/24	Josh Sederholm	2	Showdown Spike 0600	Showdown Spike 2100
ENG4 Castle Mountain	E-47	8/1	Blane Fifield	3	Showdown Spike 0600	Showdown Spike 2100
ENG6 Bishop Enterprises	E-10	7/27	Martin Strait	3	Showdown Spike 0600	Showdown Spike 2100
WAT2	E-1	7/25	Tracy Scott	1	Showdown Spike 0600	Showdown Spike 2100
WAT2 RMFS	E-64	7/31	Randy Walker	1	Showdown Spike 0600	Showdown Spike 2100
HEQB	O-90	8/1	Evan Karp	1	Showdown Spike 0600	Showdown Spike 2100
CHIP	E-54	8/2	Aaron McCarther	1	Showdown Spike 0600	Showdown Spike 2100
CHIP HLF			Local district resource	1	Showdown Spike 0600	Showdown Spike 2100
DUMP TRK2	E-81	8/3		1	Showdown Spike 0600	Showdown Spike 2100
EXCA1	E-83	8/3		1	Showdown Spike 0600	Showdown Spike 2100
LOG Denboer Logging	E-79	8/3	Willie Denboer	1	Showdown Spike 0600	Showdown Spike 2100
CHIP1 S&W Disaster Services	E-77	8/3	Joseph Hatch	1	Showdown Spike 0600	Showdown Spike 2100
HEQB	O-20	7/27	Corbin	1	Showdown Spike 0600	Showdown Spike 2100
SKD2 Grizzly	E-52	8/1	Brad Sutton	2	Showdown Spike 0600	Showdown Spike 2100
SKD2 Grizzly	E-51	8/1	Josh Burden	2	Showdown Spike 0600	Showdown Spike 2100
DOZ3 Meadow Creek	E-3	7/26	Shawn Heyer	2	Showdown Spike 0600	Showdown Spike 2100
FEL1	E-49	8/1	Jesse Sheryl	2	Showdown Spike 0600	Showdown Spike 2100
FELB1 John Stitt Contracting	E-76	8/3	John Stitt	1	Showdown Spike 0600	Showdown Spike 2100
ENG6 Peanut Pie	E-12	7/26	Gary Hall-Matson	3	Showdown Spike 0600	Showdown Spike 2100
READ	O-43	7/22	Dave Kempf	1	Showdown Spike 0600	Showdown Spike 2100
SOF2	O-3.65		Larry Holsomback	1	Showdown Spike 0600	Showdown Spike 2100

**CONTROL OPERATIONS:**

- Task: Implement tactics to keep fire West of Belt Park
- Purpose: Ensure fire activity does not get established within and East of Belt Park.
- End State: Fire Activity will be kept west of Belt Park

**SPECIAL INSTRUCTIONS:**

- Adhere to food storage order. Minimize impact to the Harley Meadow.
  - \*\*\* Indicates resources available for IA
- PACE: Primary-Hold Fire West of dozer line created by private landowners, tie into two track roads on private  
 Alternate-Hold fire West of Belt Park Road  
 Contingency-Hold Fire West of HWY89  
 Emergency-Evacuation of Belt creek road, Neihart if fire crosses Tillinghast and FR839

Trigger Points Currently for EVACUATION - Tillinghast Creek, FR839, Goblin Gulch for communities to the North and East of the fire.

**\*\*\*IN THE EVENT OF IWI CONTACT COMMAND (RADIO)\*\*\***

8. **Division/Group Communication Summary**

Function	Channel	RX Frequency N/W	RXTone/NAC	TX Frequency N/W	TX Tone/NAC	Mode
Command CMD 1	6	173.8125	107.2	168.4750	107.2	
Command CMD 2	7	173.0375	107.2	167.3250	107.2	
Command CMD 3	8	169.8125	107.2	164.6750	107.2	
Tactical TAC 3	3	168.6000	107.2	168.6000	107.2	
Command Medical Big Bald	9	171.5000		164.0000	156.7	
A/G Primary A/G PRI	13	166.6125		166.6125		

9. Prepared By (Resource Unit Leader)	Approved By (Planning Section Chief)	Date	Time
Jocelyn Howell RESL (t)	Carol O'Bryan	7/23/2021	1845

## Division/Group Assignment List (ICS 204 WF)

<b>1. Incident Name:</b>				<b>3.</b>		
Divide Complex-Balsinger				Branch: <b>III</b>	Division/Group  <b>Structure</b>	
<b>2. Operational Period:</b>						
Date/Time From: 7/24/2021		Date/Time To: 0600-2100				
<b>4. Operations Personnel</b>						
BRANCH DIRECTOR		Josh Graham		FIELD OPERATIONS		Tyler Van Ormer, Bert Plante (T)
DIVISION/GROUP SUPERVISOR		TK Kennedy, Kevin Grodi		LEAD OPERATIONS		Jeff Schardt
				PLANNING OPERATIONS		Shawn Nagle, Kevin Grodi (T)
<b>5. Resources Assigned this Period</b>						
Strike Team / Task Force / Resource Designator		LWD	Leader	Number Persons	Drop Off PT./Time	Pick Up PT./Time
TFLD	O-33	7/23	Dave Wanderaas	1	Showdown Spike 0600	Showdown Spike 2100
SOF2	O-3.65		Larry Holsomback		Showdown Spike 0600	Showdown Spike 2100
ENG4 RMFS	E-46	8/1	Shane Strehle	3	Showdown Spike 0600	Showdown Spike 2100
ENG4 Bakken	E-42	7/31	Rhondina Tsosie	3	Showdown Spike 0600	Showdown Spike 2100
FALM Jameson	O-31	7/26	Sean Hickey	2	Showdown Spike 0600	Showdown Spike 2100
TFLD	O-6	7/23	Alex Brooks	1	Showdown Spike 0600	Showdown Spike 2100
TFLD (t)	O-16	7/27	Aaron Strobel	1	Showdown Spike 0600	Showdown Spike 2100
ENG3 RMFC-5	E-45	7/25	Frank Broad	3	Showdown Spike 0600	Showdown Spike 2100
EMPF	O-30	7/30	Joe Decker	1	Showdown Spike 0600	Showdown Spike 2100
<b>6. Control Operations/Work Assignments:</b>						
Task: Continue with structure assessments and mitigation measures within Division I and Division T of the Balsinger Fire						
Purpose: Ensure any threats to structures are mitigated						
End State: Threats to structures within Division I and Division T of the Balsinger Fire will be mitigated						
<b>7. Special Instructions:</b>						
PACE: Primary-Point Protection						
Alternate-Set up sprinkle system around structures						
Contingency-Coordinate with local VFDs						
Emergency-Close HWY 89						
Trigger Points Currently for EVACUATION – Tillinghast Creek, FR839, Goblin Gulch for communities to the North and East of the Fire.						
<b>***IN THE EVENT OF IWI CONTACT COMMAND (RADIO)***</b>						
<b>8. Division/Group Communication Summary</b>						
Function	Channel	RX Frequency NW	RXTone/NAC	TX Frequency N/W	TX Tone/NAC	Mode
Command CMD 1	6	173.8125	107.2	168.4750	107.2	
Command CMD 2	7	173.0375	107.2	167.3250	107.2	
Command CMD 3	8	169.8125	107.2	164.6750	107.2	
Tactical TAC 4	4	166.7250	107.2	166.7250	107.2	
Command Medical Big Bald	9	171.5000		164.0000	156.7	
A/G Primary A/G PRI	13	166.6125		166.6125		
<b>9. Prepared By (Resource Unit Leader)</b>		<b>Approved By (Planning Section Chief)</b>			<b>Date</b>	<b>Time</b>
Jocelyn Howell RESL (t)		Carol O'Bryan			7/23/2021	2100

## Division/Group Assignment List (ICS 204 WF)

<b>1. Incident Name:</b>		<b>3.</b>	
Divide Complex-Balsinger		<b>Branch:</b>	<b>Division/Group</b>
		<b>III</b>	<b>Initial Attack</b>
<b>2. Operational Period:</b>			
Date/Time From: 7/24/2021	Date/Time To: 0600-2100		

4. Operations Personnel			
BRANCH DIRECTOR	Josh Graham	FIELD OPERATIONS	Tyler Van Ormer, Bert Plante (T)
DIVISION/GROUP SUPERVISOR	Mike Willardson	LEAD OPERATIONS	Jeff Schardt
		PLANNING OPERATIONS	Shawn Nagle, Kevin Grodi (T)

5. Resources Assigned this Period						
Strike Team / Task Force / Resource Designator	LWD	Leader	Number Persons	Drop Off PT./Time	Pick Up PT./Time	
TFLD	O-80	7/30	Mike Willardson	1	Showdown Spike 0600	Showdown Spike 2100
SOF2	O-3.65	8/5	Larry Holsomback	1	Showdown Spike 0600	Showdown Spike 2100
ENG6 Flame Chasers	E-41	8/1	Edwin Hall	3	Showdown Spike 0600	Showdown Spike 2100
ENG6 DS Fire	E-74	8/2	Billie Smock	3	Showdown Spike 0600	Showdown Spike 2100
ENG3 Castle Mountain Fire	E-75	8/2	Scott McHenry	3	Showdown Spike 0600	Showdown Spike 2100
ENG6 Desert Hill FD	E-39	8/2	Jason Sayre	3	Showdown Spike 0600	Showdown Spike 2100
ENG6 Green Valley FD	E-40	8/3	Mike Carrafa	3	Showdown Spike 0600	Showdown Spike 2100
ENG6 Loomis Fire (American Fork)	E-38	8/3	Taylor Easy	3	Showdown Spike 0600	Showdown Spike 2100
WAT3 Sterling	E-4	7/24	Duane Turk	1	Helibase 0600	Helibase 2100

<p><b>CONTROL OPERATIONS:</b></p> <p>Task: Serve as the primary responding suppression resources to any initial attack fires within the Temporary Flight Restrictions (TFR) as identified in the Delegation of Authority</p> <p>Purpose: Keep fire activity within the perimeter of initial attack fires</p> <p>End State: Fire is at least 90% contained and has not grown in size for one operational period</p>
<p><b>SPECIAL INSTRUCTIONS:</b></p> <ul style="list-style-type: none"> <li>Stage at Showdown.</li> <li>E4 Sterling WAT3 will stage at Helibase</li> <li>E-38 Loomis Fire on loan to American Fork Fire</li> </ul> <p style="text-align: center;">***IN THE EVENT OF IWI CONTACT COMMAND (RADIO)***</p>

8. Division/Group Communication Summary						
Function	Channel	RX Frequency N/W	RXTone/NAC	TX Frequency N/W	TX Tone/NAC	Mode
Command CMD 1	6	173.8125	107.2	168.4750	107.2	
Command CMD 2	7	173.0375	107.2	167.3250	107.2	
Command CMD 3	8	169.8125	107.2	164.6750	107.2	
Tactical TAC 2	2	168.2000	107.2	168.2000	107.2	
Command Medical Big Bald	9	171.5000		164.0000	156.7	
A/G Primary A/G PRI	13	166.6125		166.6125		

<b>9. Prepared By (Resource Unit Leader)</b>	<b>Approved By (Planning Section Chief)</b>	<b>Date</b>	<b>Time</b>
Jocelyn Howell RESL (t)			

## HEALTH AND SAFETY MESSAGE

*SAFETY* starts with *YOU*

We are ALL accountable for SAFE behaviors

INCIDENT: Divide Complex/American Fork Fire | DATE: July 24, 2021

**Major Hazards and Risks: Bear Safety, IWI, and LCES**

**Be Bear Aware:** Bear Food Storage Special Order- Food should be stored in an approved bear-resistant container; don't store food in your tent; don't leave food in the back of vehicles overnight. Trash, MRE's and cases of water should not be left unattended at drop points. Trash should be gathered and removed from sleeping areas. For more information visit the Helena-Lewis and Clark National Forest website (<https://www.fs.usda.gov/main/hlcnf/home>).

**IWI:** Be sure you are familiar with the Medical Plan and Incident Within an Incident process on your division/fire. Share this information with your crew and make sure everyone understands the IWI process.

**LCES:** Lookouts; Communications; Escape Routes; Safety Zones. Are they established? All resources should be familiar with LCES.



3. SAFETY ZONES AND ESCAPE ROUTES  
NOT IDENTIFIED

### **Directing Retardant and Bucket Drops**

- Give general location on incident to aerial resource – division / head / heel / flank.
- Finalize location with:
  - Clock position from pilot's perspective (see IRPG front cover).
  - Description of prominent landmarks.
  - Use **signal mirrors whenever possible**.
  - Use panels or flagging to mark target as needed.
- Describe target from your location and explain mission. The pilot will decide drop technique and flight path.
- Know the pilot's intentions prior to the drop. Clear the area to avoid direct flights over ground personnel and equipment.
- Give feedback to pilot about drop accuracy. Be honest and constructive. Let pilot know if drop is early, late, uphill, downhill, on target, too high, too low, etc. Report low drops immediately.

**Safety Officers:** Buddy Kelley, Paul Churchill, Jeff Henderson (T), Larry Holsomback and Shawn Duggar



215a Divide Complex / American Fork - Saturday, July 24, 2021

8. Location	9. Hazard	6. Control or Abatement Action (Engineering, Administrative, PPE, Avoidance, Education, etc)
All	Helicopter Operations	<ul style="list-style-type: none"> <li>~ Ensure positive communication with all air resources.</li> <li>~ Don't plan on air resources for medical transport or resupply.</li> <li>~ Follow "Aviation Watch-Out Situations" IRPG Pg 46.</li> <li>~ Refer to "Directing Bucket or Retardant Drops" IRPG Pg 58.</li> <li>~ Refer to "Aircraft Mishap Response Procedure" IRPG Pg 62.</li> <li>~ Stay clear of all bucket drops when suppression actions are in place and allow 1 minute prior to re-entry.</li> <li>~ Monitor A-G communications.</li> </ul>
All	Extreme Fire Behavior	<ul style="list-style-type: none"> <li>~ Share weather observations with all personnel assigned to division.</li> <li>~ Establish "Trigger Points" to withdraw.</li> <li>~ Use "Risk Management" process prior to engaging in suppression actions IRPG Pg 1.</li> <li>~ Refer to "Common Denominators of Fire Behavior Tragedy Fires" IRPG Pg 5.</li> <li>~ Refer to "Alignment's &amp; Patterns for Dangerous Fire Behavior" IRPG Pg 73</li> </ul>
All	Fireline Hazards	<ul style="list-style-type: none"> <li>~ Refer to "Fireline Location" considerations, IRPG Pg 84</li> <li>~ Do not work directly above or below personnel during firing and mop-up operations.</li> <li>~ Watch for falling and rolling debris on steep slopes.</li> <li>~ Alert crew personnel of rolling debris by yelling to affected individuals.</li> <li>~ Position debris that could roll vertically on slope.</li> <li>~ Avoid stepping over debris that could roll by walking around object.</li> <li>~ Avoid radiant heat by wearing appropriate PPE correctly.</li> <li>~ Flag and isolate all HAZMAT and alert all personnel working in Division.</li> <li>~ Follow WUI recommendations, IRPG Pg 12.</li> </ul>
All	Heat Related Illness (HRI)& Dehydration	<ul style="list-style-type: none"> <li>~ Refer to Heat Related Illness information, IRPG Pg 109</li> <li>~ Drink Fluids throughout operational period (6-8 qts/shift).</li> <li>~ Maintain water/electrolyte ratio of 3 to 1.</li> <li>~ Carry extra water on line and cache water at drop points.</li> <li>~ Take Frequent breaks, minimum of 10 minutes every hour.</li> <li>~ Allow out of area resources time to acclimatize before <b>expecting peak performance.</b></li> </ul>
All	Hazard Trees	<ul style="list-style-type: none"> <li>~ Follow "Hazard Tree Safety" guidelines, IRPG page 22.</li> <li>~ Post lookouts, or use a spotter in mop-up areas with personnel.</li> <li>~ Don't park vehicles or take breaks in high concentrations of hazard trees.</li> <li>~ Establish trigger points for disengagement during high wind events.</li> <li>~ Remember that the hazard zone extends a minimum of 2 1/2 tree heights.</li> </ul>
All	Chain Saw Operations	<ul style="list-style-type: none"> <li>~ Follow "Hazard Tree Safety" guidelines, IRPG Pg 22</li> <li>~ Follow "Procedural Felling Operations" IRPG Pg 85.</li> <li>~ Look up, Look down, Look around for hazard tree indicators.</li> <li>~ Only fell and buck trees within your expertise, and training.</li> <li>~ Do not fall trees during high wind events.</li> <li>~ Ensure proper use of all required PPE.</li> </ul>
All	Heavy Equipment Operations	<ul style="list-style-type: none"> <li>~ Refer to "Working with Heavy Equipment" IRPG Pg 86</li> <li>~ Ensure communications are established with operators.</li> <li>~ Use hand signals if other communications are unavailable.</li> <li>~ Maintain a 300 feet exclusion area around equipment and increase it to 1 1/2 times tree height when in timber.</li> <li>~ Use a spotter when backing.</li> <li>~ Avoid working below heavy equipment.</li> <li>~ <b>Brush Chippers: Ensure that Job Hazard Analysis are reviewed and signed by all crew members working with or around them.</b></li> </ul>
All	Structure Protection & HAZMAT	<ul style="list-style-type: none"> <li>~ Review "Wildland Urban Interface Firefighting" considerations, IRPG Pg 12-16</li> <li>~ Use "Structure Assessment" checklist, IRPG Pg 13</li> <li>~ Refer to "Structure Hazard Marking System" IRPG Pg 41</li> <li>~ Follow "HAZMAT Incident Operations" IRPG Pg 36</li> </ul>
All	Driving & Traffic	<ul style="list-style-type: none"> <li>~ Practice "Defensive Driving" techniques traveling on all roads and city streets.</li> <li>~ Use spotters when backing.</li> <li>~ Always use headlights.</li> <li>~ Yield to pedestrians, wildlife and livestock.</li> <li>~ Observe posted speed limits.</li> <li>~ Use the 3 second rule for following distance when driving.</li> <li>~ Use chock blocks, turn wheels into hill.</li> <li>~ Avoid distractions (eating, cell phones, and radio).</li> <li>~ Ensure that windshields are kept clean of dust and bugs.</li> </ul>
All	Spike Camp	<ul style="list-style-type: none"> <li>~ Keep a clean camp</li> <li>~ Ensure communications are in place.</li> <li>~ Review and observe "Line Spike" considerations, IRPG Pg. 95</li> </ul>
All	Bees, Ticks, Mosquitoes	<ul style="list-style-type: none"> <li>~ Canvas crew members for those with known allergic reactions to stings.</li> <li>~ Ensure crew members have medication pens if needed.</li> <li>~ Perform daily self-inspection.</li> <li>~ Use repellent as necessary.</li> <li>~ Advanced Life Support, multi-dose epi and airway protection.</li> <li>~ Keep affected area clean and bandaged.</li> <li>~ Be extra careful when eating and/or drinking to avoid stings to mouth and throat.</li> </ul>
All	Wildlife & Livestock	<ul style="list-style-type: none"> <li>~ Watch out for wildlife &amp; livestock inside fire area and along roadways.</li> <li>~ Clean up all food and trash during each operational period.</li> <li>~ Store all food in bear proof containers or in vehicles.</li> <li>~ Slowly back away from any wildlife that you encounter.</li> </ul>
All	Mop-up & Suppression Repair	<ul style="list-style-type: none"> <li>~ Do not work above or below personnel during rehab/mop-up operations.</li> <li>~ Alert crew personnel of rolling debris by yelling to affected individuals.</li> <li>~ Position debris that could roll vertically on slope.</li> <li>~ Wear eye protection.</li> </ul>

---

## **Interagency Fire Operations**

- Distributive operations, spike camps, boxed meals, community cooler mitigations, remote briefings, decentralized staging areas, virtual and remote participation, and module as one (updated) to the maximum extent possible.
- Maintain social distancing from any personnel outside your fire module
- Complete (daily) wildland fire COVID-19 health screening tool for each firefighter
- Upon resource order, collect intelligence on how local units will receive incoming resources
- Minimize unnecessary stops in-route to assignments
- Utilize digital technology (AirDrop, QR codes, photos, text) to the extent possible to share information such as Crew Manifest, Maps, IAPs, CTRs, etc.
- Use remote briefing via radio or cell phone if possible. If not, maintain social distancing, wear face covering and minimize personnel at the briefing.

## **Maintain Situational Awareness of The Fire Environment: 10 & 18, LCES**

- Monitor each other, watch for symptoms (Firefighter Health Screening Tool).
- Never share PPE, UTV & flight helmets, radios, or other equipment
- Implement daily decontamination procedures of apparatus and equipment
- Adjust operational periods to allow for additional COVID-19 logistics.
- Plan for overnight lodging/camping/feeding scenarios that maintain separation from other fire personnel and community

---

## **WILDLAND FIRE COVID-19 SCREENING TOOL**

---

Today or in the past 24 hours, have you had any of the following symptoms<sup>1</sup>?

Symptom
Cough more than expected?
Shortness of breath or difficulty breathing?
Fever? Chills?
Muscle pain, outside your normal for firefighting?
Sore throat?
New loss of taste or smell?
Fatigue, outside your normal for firefighting?
Headache, outside your normal for firefighting?
Congestion or runny nose, outside your normal for firefighting?
Nausea or vomiting
Diarrhea
<i>* Take temperature with no-touch thermometer, if available *</i>

## MEDICAL PLAN (ICS 206 WF)

<b>Incident/Project Name</b>	<b>1. Operational Period</b>
<b>Divide Complex/American Fork</b>	<b>July 24, 2021 0600-2100</b>

<b>2. Ambulance Services</b>			
Name	Complete Address	Phone & EMS Frequency	Advanced Life Support (ALS) Yes No
Meagher County Volunteer Ambulance	White Sulphur Springs, MT	406-547-3397 or 911	No
Belt Ambulance (Balsinger Fire Response Area)	Belt, MT	911	No

<b>3. Air Ambulance Services</b>		
Name	Phone	Type of Aircraft & Capability
Mercy Flight (Rotor & Fixed Wing)	800-972-4000	Air Ambulance, NVG Capable. (Use TAN Channel 15 155.3400 for contact with helicopter) For Fixed Wing Transports -Ambo will transport to White Sulphur Springs Airport
Life Flight Network	800-232-0911	Air Ambulance, NVG Capable. (Use TAN Channel 15 155.3400 for contact with helicopter)
Two Bear Rotor	406-758-5610	Rotor- Bell 429 Hoist Capable- NVG Capable. Must be ordered as Medical Transport

<b>4. Hospitals</b>								
Name Complete Address	GPS Datum – WGS 84 Coordinate Standard Degrees Decimal Minutes DD° MM.MMM' N - Lat DD° MM.MMM' W - Long		Travel Time		Phone	Helipad		Level of Care Facility
	Lat:	Long:	Air	Gnd		Yes	No	
Mtn View Medical Center 16 West Main White Sulphur Springs, MT	N 46° 32.870	W 110° 54.396	10 Min	40 Min	406-547-3321	X		Stabilize & Transfer
St Peters Health 2475 E Broadway St Helena, MT	N 46° 34.939	W 111° 59.764	20 Min	60 Min	406-442-2480	X		Area Trauma Center
Benefis Health System 1101 26 <sup>th</sup> St S Great Falls, MT	N 47° 29.510	W 111° 15.588	30 Min	120 Min	406-543-7271	X		Level 2 Trauma Center
Univ. Of Utah Health 50 N Medical Dr. Salt Lake City, UT	N 40° 46.361	W 111° 50.240	90+ Min	NA	801-581-2700	X		Designated Burn Center

5. Division   Branch   Group	Area Location Capability	
<b>DIVISION I Balsinger</b>	<b>EMS Responders &amp; Capability:</b>	EMTF Emma Kashian (Alpha) EMPF K Willie & EMTF A MacArthur AMBO 1
	<b>Equipment Available on Scene:</b>	4x4 Vehicle BLS Kit & 4x4 ALS Ambo
	<b>Medical Emergency Channel:</b>	Big Baldy Channel 9
	<b>ETA for Ambulance to Scene:</b>	
	<b>Air:</b>	25-60 Minutes Including Spin Up Time
	<b>Ground:</b>	30 Minutes to Spike 80 Minutes to Fire
	<b>Approved Helispot:</b>	H1
	<b>Lat:</b>	46.51.497
	<b>Long:</b>	110.40.703

<b>DIVISION T Balsinger</b>	<b>EMS Responders &amp; Capability</b>	
	<b>Equipment Available on Scene:</b>	
	<b>Medical Emergency Channel:</b>	
	<b>ETA for Ambulance to Scene:</b>	
	<b>Air:</b>	25-60 Minutes Including Spin Up Time
	<b>Ground:</b>	30 Minutes to Spike 80 Minutes to Fire
	<b>Approved Helispot:</b>	
	<b>Lat:</b>	
<b>Long:</b>		

## MEDICAL PLAN (ICS 206 WF)

<b>DIVISION Q Ellis</b>	EMS Responders & Capability		
	Equipment Available on Scene:		
	Medical Emergency Channel:		
	ETA for Ambulance to Scene:		
	Air:		
	Ground:		
	Approved Helispot:		
	Lat: Long:		
<b>DIVISION E Ellis</b>	EMS Responders & Capability	EMTF Gabriel Mizrahi ,EMTF Rich Goldman, EMTF Wendy Conway	
	Equipment Available on Scene:	Two 4x4 Vehicles 3 BLS Kits	
	Medical Emergency Channel:	Monument Channel 10	
	ETA for Ambulance to Scene:		
	Air:	25-60 Minutes Including Spin Up Time	
	Ground:	40 Minutes to Spike 90 Minutes to Fire	
	Approved Helispot:		
	Lat: Long:		
<b>American Fork</b>	EMS Responders & Capability	Montana EMTF and EMPF, arriving soon	
	Equipment Available on Scene:	ALS Ambulance, arriving soon	
	Medical Emergency Channel:	Channel 2 (sunlight repeater)	
	ETA for Ambulance to Scene:		
	Air:	25-60 Minutes Including Spin Up Time	
	Ground:	5-25 Min dependent on location	
	Approved Helispot:		
	Lat: Long:	46.14.690 110.10.650	
<b>ICP</b>	EMS Responders & Capability	Sherri McDougal MEDL(t)	
	Equipment Available on Scene:	100 Man Kit	
	Medical Emergency Channel:		
	ETA for Ambulance to Scene:		
	Air:	25-60 Minutes Including Spin Up Time	
	Ground:	5-25 Min dependent on volunteer staffing	
	Approved Helispot:		
	Lat: Long:		
<b>6. Prepared By (Medical Unit Leader)</b>		<b>7. Date/Time</b>	<b>8. Reviewed By (Safety Officer)</b>
Sherri McDougal, MEDL (t)		7/23/2021 1900	/S/ Jeff Henderson

**Overnight Medical Incidents will be relayed thru Big Baldy Channel 9 or Monument Channel 10. Please note Dispatch Response is shared overnight and will be initiated from Great Falls or Helena during overnight hours. Complete Medical Incident Report (8 line) per process with responding dispatch center.**

**American Fork overnight medical incidents will relay through Channel 2 (Sunlight repeater) and response will be initiated from Great Falls**

# AIR OPERATIONS SUMMARY

Prepared By: Tim Elder

Prepared Date: 7.23.21

Prepared Time: 1800

<b>INCIDENT NAME:</b> American Fork	<b>OPERS PERIOD DATE:</b> July 24, 2021	<b>START TIME:</b> 0800	<b>END TIME:</b> 2000	<b>Sunrise:</b> 0556	<b>Sunset:</b> 0903
<b>3. REMARKS (Safety Notes, Hazards, and Air Operations Special Equipment, etc.):</b> Hazards – Poor Visibility due to smoke, anticipate general and fire aviation traffic. Use caution when utilizing non-towered airports. See and Avoid.  Helicopter requests can be made directly to the helibase via Command 1 for Ellis & Balsinger, requests from American Fork should use Sunlight repeater.					
		<b>MEDEVAC:</b> Short Haul – N401HQ - Josh Ingles 406-461-4433 Air Ambulance Frequency - “Tan” 155.3400 - TX tone 156.7		<b>TFR #:</b> American Fork 1/1480 7nm 12,500 msl Balsinger 1/6366 7 nm 11,000 msl	

PERSONNEL	NAME	PHONE #	FREQUENCIES	AM	FM	FIXED-WING- Type/ Make-Model/ N#/ Base
AOBD	Tim Elder	863-243-1438 863-610-0096	A/G Ellis		168.7375	AIRTANKERS – Order through Air Attack if on scene, otherwise through AOBD.
ASGS (T)	Brian Butler	970-946-8068	A/G Balsinger - A/A	125.125	166.6125	LEAD PLANES- Available at Helena
HEBM	John Nobles	239-777-8455	A/G American Fork - A/A TFR/FW - A/A RW	119.100 128.250	169.1500	AERIAL SUPERVISION- Available at Helena
HEBM (T)	Josh Bardwell	936-546-1915				SEATS- Available through Great Falls Dispatch
ATGS	Steve Little	828-778-2077				

## HELICOPTERS

FAA N#	T Y	MAKE/ MODEL	BASE	START	AVAIL	REMARKS	FAA N#	T Y	MAKE/ MODEL	BASE	START	AVAIL	REMARKS
N948CH	1	CH-47	7S6	0800	0900	R1 Prepo	N40GRG	1	Puma	HLN	0800	0900	R1 Prepo
N353RC	2	UH-1H	7S6	0800	0900	R1 Prepo	N4247V	2	58T	HLN	0800	0900	R1 Prepo
N210MA	2	Bell 210	7S6	0800	0900	R1 Prepo	N401HQ	3	AS350B3	HLN	0800	0900	Forest Ship

TASK/ MISSION/ ASSIGNMENT (Type/ function includes: Air Tactical, Retardant, Recon, Personnel Transport, Bucket Operations, SAR, etc.				
TYPE/FUNCTION	NAME OF PERSONNEL OR CARGO (If applicable) or instructions for tactical aircraft	MISSION START	FLY FROM	FLY TO
Recon	As Requested			
Bucket Support / Supply Missions	As Requested			
Personnel Transport	As Requested			
Aerial Supervision	As Requested			

# INCIDENT RADIO COMMUNICATIONS PLAN (ICS 205)

Controlled Unclassified Information//Basic

1. Incident Name: American Fork		2. Date/Time Prepared: Date: 07/23/2021 Time: 1600		3. Operational Period: Date/Time From: 07/24/2021 0600		THU	Date/Time To: 07/24/2021 2100			
<b>4. Basic Radio Channel Use:</b>										
Zone Group	Ch #	Function	Channel Name/Trunked Radio System Talkgroup	Assignment	RX Freq	RX Tone/NAC	TX Freq	TX Tone/NAC	Mode (A,D, or M)	Remarks
2	1	Tactical	JEFF DIR		171.5000		171.5000	123.0	A	
2	2	CMD	REPEATERS		171.5000		164.0000		A	Selectable Tone SEE PAGE 2
2	3	Tactical	RED	DIV A	154.0700		154.0700	131.8	A	
2	4	Tactical	COMMON USE 1	DIV M	168.6125		168.6125	156.7	A	
2	5	Tactical	COMMON USE 2	DIV P	163.7125		163.7125	146.2	A	
2	6	Tactical	LCNF TAC		166.9875		166.9875	114.8	A	
2	7	Tactical	YELLOW		151.2200		151.2200	110.9	A	
2	8	Tactical	HFDIR		171.1375		171.1375	107.2	A	
2	9	Tactical	MGHR FIRE 1		154.4000		154.4000	100.0	A	
2	10	RPT	CASCADE LAW		154.7700		155.5800	151.4	A	
2	11	Tactical	MEAGHER DES S		155.0250		155.0250	107.2	A	
2	12	Tactical	MGHR DES RPTR		155.0250		158.7750	107.2	A	
2	13	Air Ground	NIFC A/G		169.1500		169.1500		A	NIFC Air to Ground
2	14	Air Ground	A/G 52		168.3875		168.3875		A	Local Air to Ground
2	15	Medivac	Tan		155.3400		155.3400	156.7	A	Air Ambulance
2	16	AIR GUARD	AIR GUARD		168.6250		168.6250	110.9	A	
<b>5. Special Instructions: All Medical calls use GREAT FALLS DISPATCH and call back to Communication 201-401-6806 to initial IWI.</b>										
<b>6. Prepared By</b> (Communications Unit Leader)				Name: SHANNON HERRING		Signature:		Date/Time: 07/23/21 1600		
ICS 205				IAP Page						

AMERICAN FORK TONE LIST

STONE	JEFFERSON RPTR	FREQ	NOTE
1	PORPHYRY	123.0	
2	MONUMENT	103.5	
3	ELK PEAK	131.8	
4	BIG BALDY	156.7	
5	MT HIGH	146.2	
6	WEST PEAK	114.8	
7	HWD BALDY	110.9	
8	SUNLIGHT	107.2	AIR OPS FOR AMERICAN FORK
9	GREATHOUSE	100.0	

TONE NUMBERS ONLY REFER D-SERIES RADIOS

# INCIDENT RADIO COMMUNICATIONS PLAN (ICS 205)

## Controlled Unclassified Information//Basic

<b>1. Incident Name:</b> Divide Complex		<b>2. Date/Time Prepared:</b> Date: 07/23/2021 Time: 1600		<b>3. Operational Period:</b> Date/Time From: 07/24/2021 0600 Date/Time To: 07/24/2021 2100		THU					
<b>4. Basic Radio Channel Use:</b>											
Zone Group	Ch #	Function	Channel Name/Trunked Radio System Talkgroup	Assignment	RX Freq	RX Tone/NAC	TX Freq	TX Tone/NAC	Mode (A,D, or M)	Remarks	
1	1	Tactical	Tac 1	Div J "Balsinger"	168.0500	107.2	168.0500	107.2	A	Division India "Balsinger"	
1	2	Tactical	Tac 2	Div E "Ellis"	168.2000	107.2	168.2000	107.2	A	Division Echo "Ellis" Initial	
1	3	Tactical	Tac 3	Div T "Balsinger"	168.6000	107.2	168.6000	107.2	A	Division Tango "Balsinger"	
1	4	Tactical	Tac 4	Structure "Balsinger"	166.7250	107.2	166.7250	107.2	A	Structure Division "Balsinger"	
1	5	Tactical	Tac 5	Div Q "Ellis"	166.7750	107.2	166.7750	107.2	A	Division Quebec "Ellis"	
1	6	Command	CMD1	All Division	173.8125	107.2	168.4750	107.2	A	Air Ops for "Balsinger" & "Ellis"	
1	7	Command	CMD2	All Division	173.0375	107.2	167.3250	107.2	A	Prophry L.O. Showdown	
1	8	Command	CMD3	All Division	169.8125	107.2	164.6750	107.2	A	Big Baldy Mtn	
1	9	Command	Big Bald	All Division	171.5000	107.2	164.0000	156.7	A	Monument Mtn	
1	10	Command	Monument	All Division	171.5000	107.2	164.0000	103.5	A	USFS Dispatch Big Baldy "Balsinger"	
1	11	Tactical	Yellow		151.2200		151.2200		A	USFS Dispatch Monument	
1	12	Tactical	Red		154.0700		154.0700		A		
1	13	Air Ground	A/G PRI		166.6125		166.6125		A	BALSINGER A/G	
1	14	Air Ground	A/G SEC		168.7375		168.7375		A	ELLIS A/G	
1	15	Medivac	Tan		155.3400		155.3400	156.7	A	Air Ambulance	
1	16	AIR GUARD	AIR GUARD		168.6250		168.6250	110.9	A		
<b>5. Special Instructions: Use Human Repeater When Necessary. All Medical calls through Command</b>											
Divide Communications 201-401-8806											
<b>6. Prepared By</b>				Name: SHANNON HERRING		Signature:		Date/Time: 07/23/21 1600		Clone Version 071721	
ICS 205				IAP Page							



## **Logistics**

### **Shower Available**

Location: The Lodge in White Sulphur Springs

Address: 701 6<sup>th</sup> Avenue SW

Get with your division to schedule a rotation in to shower.

The Lodge will provide a towel, but crew members must provide their own soap and shampoo.

Hours are flexible throughout the day and late evening 0800-2200.

Call Amy @ 406-899-0077 when you get in cell service to let her know how many crew members are coming (Female and Male).

Complete the sign in sheet when you get there. You will need to provide RO# and# of personnel. Do not pay for the shower.

## Weed Wash



### **Mandatory when:**

- **Checking in**
- **Moving between fires**
- **Demob**

**Located 1.3 miles west of US 89 on Luppold Rd (AKA Cemetery Rd).**

# Finance

CTRs – If you spend time working on a fire other than the fire you were resource ordered for please document that time on the CTR.

Example 1: If your resource order says the Divide fire and you work all day on the American Fork fire, write in the comments that you worked that shift on the American Fork fire.

Example 2: If you were ordered for the American Fork fire and you work from 8 am till 11 am on the Divide fire, you will need to write Divide fire in the remarks column for those hours.

Document reason for Hazardous Pay on CTR.

Last working day – please contact finance via email two days prior to your demob day.

[2021.divide.finance@firenet.gov](mailto:2021.divide.finance@firenet.gov)

[2021.americanfork.finance@firenet.gov](mailto:2021.americanfork.finance@firenet.gov)

# Finance Remote Processing Procedures

To the right is access to electronic Finance forms. You can access them via the QR code or the URL. On each form are four buttons PRINT, RESET, SAVE and EMAIL. You can complete these forms on your cell phone, tablet or laptop. They are Adobe PDF forms so you will need a PDF reader app on your device. The forms were created on a laptop so the commands in your cell phone and tablet do not allow for the Save and Print functions to work. You will need to use your app's functionality to Save or Print.

Once you have completed the appropriate form for your resource please email to your supervisor for approval.

Supervisors can use their app to apply a signature or just type /s/ your name on the approval line. After approving please email the approved form back to the resource for their record and to the correct finance email:

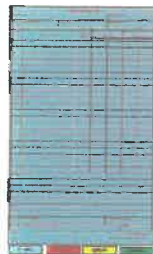
[2021.americanfork.finance@firenet.gov](mailto:2021.americanfork.finance@firenet.gov)

[2021.divide.finance@firenet.gov](mailto:2021.divide.finance@firenet.gov)

Resources: Please send photos or electronic copies of Casual hire forms, contracts, Cooperative agreements, Vehicle inspection, Manifests and resource orders to the correct finance email:

[2021.americanfork.finance@firenet.gov](mailto:2021.americanfork.finance@firenet.gov)

[2021.divide.finance@firenet.gov](mailto:2021.divide.finance@firenet.gov)



Crew Time Report



Shift Ticket



Emergency Fuel and Oil Ticket



General Message



## **Human Resource Message**

The mission of the Gold Team is to safely, effectively and efficiently manage the Divide Complex and American Fork Fire by maintaining a team of skilled and productive personnel. During this incident we will strive to successfully complete our mission and achieve our objectives while creating a positive, drug and alcohol free work environment for all assigned incident personnel. Consumption of drugs that alter decision making abilities, such as marijuana and alcohol, is prohibited while assigned to the incident.

The Gold Team fully supports EEO and will not tolerate sexual harassment or any form of discrimination!

All inappropriate behavior will be dealt with promptly. Disciplinary action and reporting back to an individual's home unit will be initiated as necessary.

Please report any incidents of inappropriate behavior to your supervisor, Marty Bentley or myself immediately.

*Deborah Beard*, Incident Commander



## TRAINING MESSAGE

Check-in – If you have a position task book (PTB), please scan the QR code below to initiate the check-in process with the Incident Training Specialist. Please complete the form in its entirety. Upon completion, at your earliest convenience, please email a copy of your qualification card and position task book cover to Al Hoke at [ahoke@gfc.state.ga.us](mailto:ahoke@gfc.state.ga.us).

For your convenience, an electronic ICS-225 or ICS-226 and Evaluation Record will be sent to you after you complete the check-in process.



<https://forms.office.com/g/25cqnByg71>

Demob – In order to receive credit for your assignment, you must close out with the Incident Training Specialist prior to departure.

Close out requirements include:

1. Ensure your trainer(s)/evaluator(s) has/have initialed completed tasks in your PTB;
2. Obtain an Incident Performance Rating (please sign in the appropriate block at the bottom of the form);
3. Obtain an Evaluation Record;
4. If evaluator initialed #1 on your Evaluation Record, ensure he/she signs as final evaluator (located on the backside of your PTB cover page);
5. Email all documentation (including item #4, when appropriate) to [ahoke@gfc.state.ga.us](mailto:ahoke@gfc.state.ga.us);



## Southern Area Incident Management Gold Team Fire Information

nciWeb

[Divide Complex-Balsinger Fire Information - InciWeb the Incident Information System \(nwcg.gov\)](#)

[Divide Complex-Ellis Fire Information - InciWeb the Incident Information System \(nwcg.gov\)](#)

[American Fork Fire Information - InciWeb the Incident Information System \(nwcg.gov\)](#)



[Helena-Lewis and Clark National Forest - Home | Facebook](#)

[Custer Gallatin National Forest - Home | Facebook](#)

Web: [Helena-Lewis and Clark National Forest - Home \(usda.gov\)](#)

[Custer Gallatin National Forest - Home \(usda.gov\)](#)

Fire Information Line: **406-272-6349** (8 a.m. – 8 p.m.)

**We are guests in this area.** Be aware that photos posted to personnel accounts may contain sensitive information. Send all photos through Information Officer to ensure they are appropriate and represent the Gold Team and our partners well. Personal protective equipment is required in any photos that will be utilized to tell the story of the fire.

# Tentative DEMOB List

## Divide Complex and American Fork

DEMOB DATE	NUMBER	TYPE	RESOURCE	MOB TRAVEL METHOD
07/24/2021	E-18	ENG6	BAKKEN WILDFIRES	POV
07/24/2021	E-20	ENG6	SOLOMON FIRE EQUIPMENT, LLC	POV
07/24/2021	O-29	SOF3	OWEN, RUSSELL	AOV
07/24/2021	O-33	TFLD	WANDERAAS, DAVID	POV
07/25/2021	C-8	HC2	BLUE MOUNTAIN CONTRACTING,	POV
07/25/2021	E-1	WTS2	LEVIATHAN, INC.	POV
07/25/2021	E-4	WTS3	TURK WATER	POV
07/25/2021	E-21	ENG6	OUTBACK FIREFIGHTING, INC.	POV
07/25/2021	E-34	ENG6	WINDSOR-SEVERANCE FPD -	AOV
07/25/2021	O-36	EMTF	GOLDMAN, RICH EMTF	POV
07/25/2021	O-37	EMTF	KASHIAN, EMMA EMTF	POV
07/26/2021	E-6	WTS2	PARK COUNTY RURAL FIRE DISTRICT #1	AOV
07/26/2021	O-2	TFLD	QUICK, MASON V	AOV
07/26/2021	O-4	TFLD	DELASANTOS, BRIAN W	AOV

On your demob date you will need to turn in supplies, radios, get vehicle/equipment inspected and **WEED WASHED**. Stop by ICP to see Demob and Finance for close out. Call Jeff DeMatteis, DMOB at 937-506-6181 if you have questions.



# IAP Map

## Divide Complex American Fork Fires

Divide Complex  
MTHLF005079  
July 24, 2021 Day

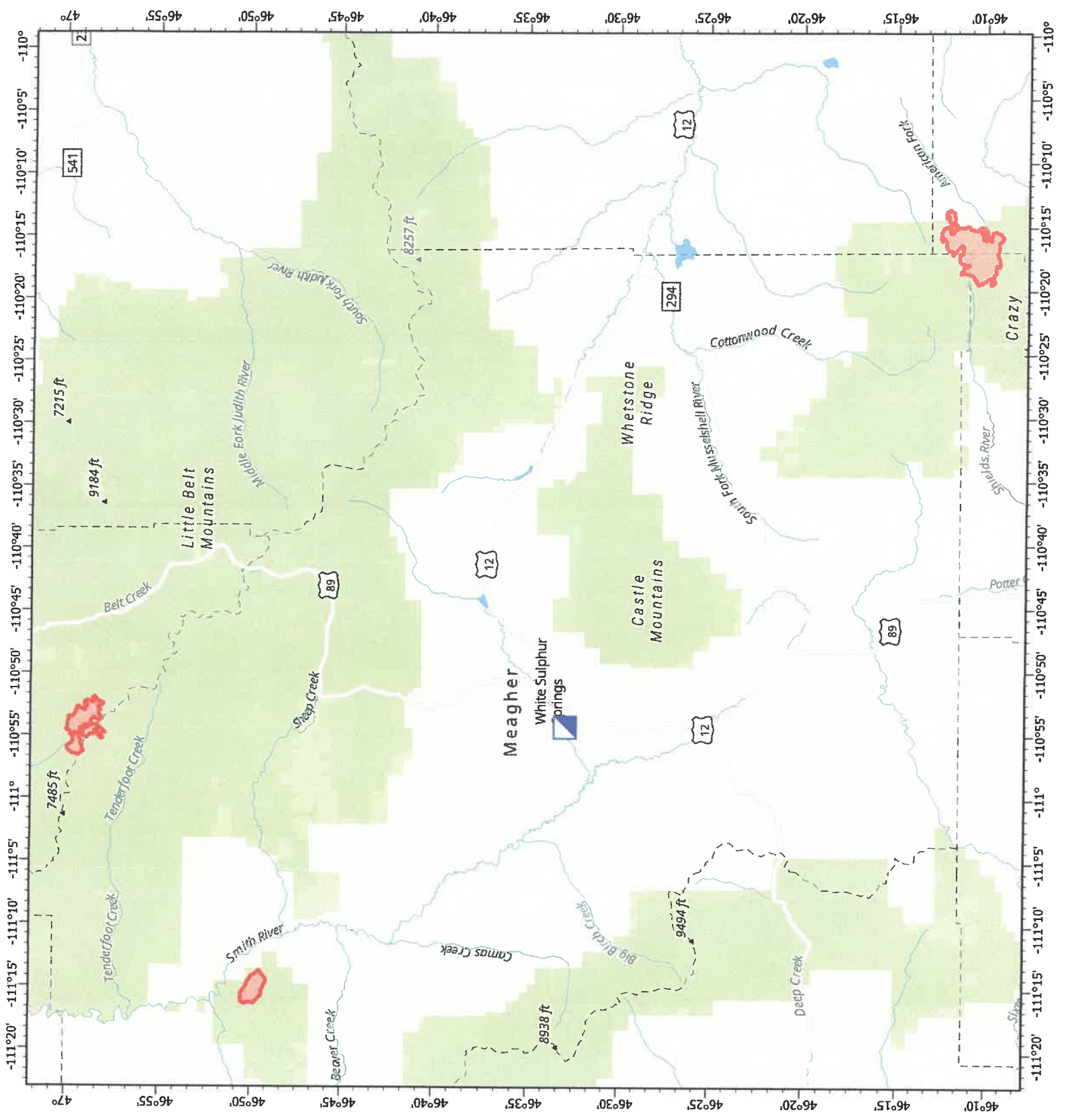


9,055 acres at 7/22/2021 1700

-  Incident Command Post
-  Wildfire Daily Fire Perimeter



E Robertson GIS  
7/23/2021 2048  
Acres from IR and GPS  
North American 1983 Datum, LatLong Grid



**PHONE LIST - GOLD TEAM - 07242021**

Position	Name	Phone Number	Position	Name	Phone Number
<b>COMMAND</b>			<b>PLANNING</b>		
Incident Commander	Debbie Beard	850-524-9966	Chief	Carol O'Bryan	903-263-8704
Incident Commander	Marty Bentley	423-584-1682	Chief	Thomas Barrett	478-550-6372
Incident Commander (t)	Michael Cheek	828-231-2691	Chief (t)	Jessica Hollingsworth	601-966-0331
Liaison Officer	Michael Wright	970-819-2890	Resource Unit Leader	Kelly Russell	850-294-8400
Liaison Officer (t)	Bobby Claybrook	859-490-0653	Resource Unit Leader	Melonie Sellers	601-508-8997
Liaison Officer (t)	Jeffrey Gardner	706-260-6296	Resource Unit Leader (t)	Laila Lenesch	541-760-1484
Covid Coordinator/Liaison (t)	Bradley Cooper	318-451-5074	Status Check-In Recorder (t)	Jocelyn Howell	214-934-0138
Public Information Officer	Michelle Burnett	803-920-6167	Situation Unit Leader	Paula Hensley	606-275-2140
Public Information Officer (t)	Andrew Gray	850-797-4824	Incident Technology Supt Splst	Christopher Evans	928-273-4203
Public Information Officer (t)	Brook Smith	865-603-5217	Incident Technology Supt Splst	James Ehrlich	423-779-4731
Public Information Officer (t)	Tricia Boles	606-627-5398	Incident Technology Supt Splst	Rusty Brown	478-973-6231
Public Information Officer (t)	Cathryn Dowd	828-412-1521	Incident Technology Supt Splst	Kevin Curry	732-684-2999
Public Information Officer (t)	Rav Butler	865-250-8980	Incident Technology Supt Splst (t)	Jeremy Albright	931-267-2081
Public Information Officer (t)	Emily Cleaver	270-350-8103	IMET	Cory Mottice	330-703-7545
Safety Officer	Paul Churchill	843-259-9884	GIS Specialist	Gregg Slezak	518-705-7472
Safety Officer	Richard Kelley	850-447-1344	GIS Specialist	Ethan Robertson	912-512-3496
Safety Officer	Larry Holsonback	706-280-4716	Fire Behavior Analyst	Kelly Cagle	336-302-0343
Safety Officer (t)	Jeffrey Henderson	479-518-3162	Demob	Jeff DeMattels	601-415-9080
			Training Specialist	Al Hoke	678-232-7107
<b>OPERATIONS</b>			READ (Lead)	Justina Dumont	315-380-4196
Chief	Jeff Schardt	706-280-5498	READ	Cory Garbbee	406-241-0360
Chief	Tyler Van Orner	540-236-8478	READ	Randy Scarlett	406-641-0241
Chief	Shawn Nagle	662-231-4024			
Chief	Loy Elam	336-467-7254	<b>LOGISTICS</b>		
Chief	Josh Graham	501-545-3088	Chief	James Copple	620-899-1135
Chief	Bert Plante	732-904-5935	Chief	James Aldridge	919-636-2471
Chief (t)	Kevin Grodi	775-385-0098	Supply Unit Leader	Lemuel Cooksey	850-508-9097
DIVS	Greg Salansky	321-408-2728	Communications Unit Leader	George Rosenthal	936-707-1832
DIVS	Steve Gray	770-655-8002	Communications Unit Leader (t)	Shannon Herring	470-201-9582
DIVS	Matthew Johnson	870-415-0185	Ordering Manager	Sherrl Kite	850-209-2150
DIVS	Danny Gore	478-456-8516	Ground Support Unit Leader	Todd Waller	501-337-6308
DIVS	Matthew Mce	928-220-0043	Medical Unit Leader	Tim Exline	727-243-4144
			Medical Unit Leader (t)	Sherrl McDougal	208-803-2026
<b>AIR OPERATIONS</b>			Facilities Unit Leader		
Air Operations Branch Director	Tim Elder	863-243-1438	Receiving & Distribution	Leigh Ostin	352-445-1366
Air Tactical Group Supervisor	Steve Little	828-778-2077	Receiving & Distribution	Donnie Norvell	254-242-8692
Helibase Manager	John Nobles	239-777-8455	Security Manager	Sasha Herrin	239-300-5755
Helibase Manager (t)	Joshua Bardwell	936-546-1915	Security Manager	Greg Blanks	912-210-3976
			Equipment Manager	Chad Willey	963-546-1943
<b>FINANCE</b>					
Chief	Reggie Lanier	912-314-1085			
Chief (t)	Jason Gillis	912-314-9233			
Time Unit Leader	Laura Wilson	765-427-7564			
Personal Time Recorder					
Cost Unit Leader	Marlene Hudson	850-570-5478			
Comp/Claims	Terri McDonald	352-454-5385			
Equipment Time Recorder					

<b>UNIT LOG</b>	1. Incident Name	2. Date Prepared	3. Time Prepared
4. Unit Name/Designators	5. Unit Leader (Name and Position)		6. Operational Period
<b>7. Personnel Roster Assigned</b>			
<b>Name</b>	<b>ICS Position</b>		<b>Home Base</b>
<b>8. Activity Log</b>			
<b>Time</b>	<b>Major Events</b>		
9. Prepared by (Name and Position)			

# MEDICAL PLAN (ICS 206 WF)

Controlled Unclassified Information//Basic

Medical Incident Report					
<b>FOR A NON-EMERGENCY INCIDENT, WORK THROUGH CHAIN OF COMMAND TO REPORT AND TRANSPORT INJURED PERSONNEL AS NECESSARY.</b>					
<b>FOR A MEDICAL EMERGENCY: IDENTIFY ON SCENE INCIDENT COMMANDER BY NAME AND POSITION AND ANNOUNCE "MEDICAL EMERGENCY" TO INITIATE RESPONSE FROM IMT COMMUNICATIONS/DISPATCH.</b>					
<b>Use the following items to communicate situation to communications/dispatch.</b>					
<b>1. CONTACT COMMUNICATIONS / DISPATCH (Verify correct frequency prior to starting report)</b> <i>Ex: "Communications, Div. Alpha. Stand-by for Emergency Traffic."</i>					
<b>2. INCIDENT STATUS: Provide incident summary (including number of patients) and command structure.</b> <i>Ex: "Communications, I have a Red priority patient, unconscious, struck by a falling tree. Requesting air ambulance to Forest Road 1 at (Lat./Long.) This will be the Trout Meadow Medical, IC is TFLD Jones. EMT Smith is providing medical care."</i>					
Severity of Emergency / Transport Priority	<input type="checkbox"/> <b>RED / PRIORITY 1 Life or limb threatening injury or illness. Evacuation need is IMMEDIATE</b> <i>Ex: Unconscious, difficulty breathing, bleeding severely, 2° - 3° burns more than 4 palm sizes, heat stroke, disoriented.</i> <input type="checkbox"/> <b>YELLOW / PRIORITY 2 Serious Injury or illness. Evacuation may be DELAYED if necessary.</b> <i>Ex: Significant trauma, unable to walk, 2° - 3° burns not more than 1-3 palm sizes.</i> <input type="checkbox"/> <b>GREEN / PRIORITY 3 Minor Injury or illness. Non-Emergency transport</b> <i>Ex: Sprains, strains, minor heat-related illness.</i>				
Nature of Injury or Illness & Mechanism of Injury				Brief Summary of Injury or Illness <i>(Ex: Unconscious, Struck by Falling Tree)</i>	
Transport Request				Air Ambulance / Short Haul/Hoist Ground Ambulance / Other	
Patient Location				Descriptive Location & Lat. / Long. (WGS84)	
Incident Name				Geographic Name + "Medical" <i>(Ex: Trout Meadow Medical)</i>	
On-Scene Incident Commander				Name of on-scene IC of Incident within an Incident <i>(Ex: TFLD Jones)</i>	
Patient Care				Name of Care Provider <i>(Ex: EMT Smith)</i>	
<b>3. INITIAL PATIENT ASSESSMENT: Complete this section for each patient as applicable (start with the most severe patient)</b>					
Patient Assessment: See IRPG page 106					
Treatment:					
<b>4. TRANSPORT PLAN:</b>					
Evacuation Location (if different): (Descriptive Location (drop point, intersection, etc.) or Lat. / Long.) Patient's ETA to Evacuation Location:					
Helispot / Extraction Site Size and Hazards:					
<b>5. ADDITIONAL RESOURCES / EQUIPMENT NEEDS:</b>					
<i>Example: Paramedic/EMT, Crews, Immobilization Devices, AED, Oxygen, Trauma Bag, IV/Fluid(s), Splints, Rope rescue, Wheeled litter, HAZMAT, Extrication</i>					
<b>6. COMMUNICATIONS: Identify State Air/Ground EMS Frequencies and Hospital Contacts as applicable</b>					
Function	Channel Name/Number	Receive (RX)	Tone/NAC *	Transmit (TX)	Tone/NAC *
COMMAND					
AIR-TO-GRND					
TACTICAL					
<b>7. CONTINGENCY: Considerations: If primary options fail, what actions can be implemented in conjunction with primary evacuation method? Be thinking ahead.</b>					
<b>8. ADDITIONAL INFORMATION: Updates/Changes, etc.</b>					
<b>REMEMBER: Confirm ETA's of resources ordered. Act according to your level of training. Be Alert. Keep Calm. Think Clearly. Act Decisively.</b>					