



Incident Action Plan

Day Operational Period
Monday 7/26/2021 0600-2100

Night Operational Period
Monday 07/26/2021 1800 –
Tuesday 07/27/2021 1000

American Fork
MT-HLF-005087 P1N57E (0115)

Divide Complex
MT-HLF-005079 P1N5FU (0115)

Morning Ops Briefing (0700) Zoom link: Zoom ID: 160 317 4872
Dial in # 1-551-285-1373



Check-in



American Fork Maps



Divide Complex Maps

2021.divide.finance@firenet.gov

2021.americanfork.finance@firenet.gov

1. INCIDENT NAME American Fork Fire and Divide Complex	2. OPERATIONAL PERIOD: DAY / NIGHT 07/26/2021 Monday 0600 - 07/27/2021 Tuesday 1000	2. DATE PREPARED 07/25/2021	3. TIME PREPARED 1800
--	--	---------------------------------------	---------------------------------

3. GENERAL CONTROL OBJECTIVES FOR THE INCIDENT (INCLUDE ALTERNATIVES)

Management Objectives

- 1) Protection of human life and safety is the first priority for all actions taken on a wildfire and can overrule all other strategic/management objectives and incident requirements.
- 2) Base management decisions on meeting objectives while also minimizing the risk of COVID-19 exposures to responders and the public. COVID-19 considerations may alter how you meet goals but should not lead to higher risk tactics.
- 3) Maintain and strengthen relationships with the Helena-Lewis and Clark NF, Custer-Gallatin NF, private landowners, the public, cooperators and partners by providing timely and accurate information.
- 4) Use management actions that ensure fire personnel safety from contact with bears through compliance with the Food Storage Special Order.
- 5) Protect the unique attributes of impacted watersheds through actions that minimize sedimentation and invasive species movement.
- 6) Protect impact to cultural resources through consultation with local forest specialists.

Control Objectives

Divide Complex

- 1) Protection of human life and safety is the first priority for all actions taken and shall override all other incident control objectives. Evaluate risk vs. benefit in strategic and tactical planning and only commit operational resources to actions that have the highest probability of success.
- 2) Protect Tenderfoot Experimental Forest infrastructure within the tenderfoot drainage.
- 3) Protect the communities of Belt Park, Deer Creek Estates, Monarch, Neihart and the Hwy 89 corridor to avoid loss or damage to private lands and critical infrastructure.
- 4) Use mechanized equipment to establish and improve control lines where approved to minimize risk and exposure to firefighting resources.
- 5) Provide initial attack resources to respond to any new ignitions within the TFR area to limit potential size and growth.

American Fork Fire

- 1) Protection of human life and safety is the first priority for all actions taken and shall override all other incident control objectives. Evaluate risk vs. benefit in strategic and tactical planning and only commit operational resources to actions that have the highest probability of success.
- 2) Keep fire on Forest Service lands to protect and limit impact to adjacent landowner property and values at risk.
- 3) Provide initial attack resources to respond to any new ignitions within the TFR area to limit potential size and growth.

4. Operational Period Command Emphasis:

***** L C E S *****

5. General Situational Awareness:

****NEAR CRITICAL FIRE WEATHER CONDITIONS expected today****

Near critical fire weather conditions are expected today for all fires for min RHs of 12-15 percent and breezy west winds at 15 to 25 mph with gusts to 30. *A thermal belt will develop again tonight, mainly over the Balsinger Fire.* Elevated fire weather conditions are expected Tuesday with more hot and dry conditions with winds shifting more to the WNW.

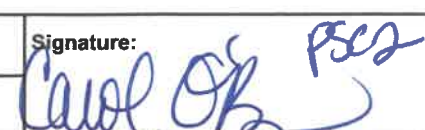
7. GENERAL MESSAGE

See the attached Safety Message for more information.

- | | | |
|--|--|---|
| <input checked="" type="checkbox"/> ORGANIZATION LIST (ICS 203) | <input checked="" type="checkbox"/> MEDICAL PLAN (ICS 206) | <input checked="" type="checkbox"/> WEATHER SPOT FORECAST |
| <input checked="" type="checkbox"/> ASSIGNMENT LIST (ICS 204) | <input checked="" type="checkbox"/> AIR OPS. SUMMARY (ICS 220) | <input checked="" type="checkbox"/> FIRE BEHAVIOR FORECAST |
| <input checked="" type="checkbox"/> COMMUNICATION PLAN (ICS 205) | <input checked="" type="checkbox"/> SAFETY MESSAGE | <input checked="" type="checkbox"/> INCIDENT EMERGENCY PLAN |

ICS 202	9. PREPARED BY (PLANNING SECTION CHIEF) Carol O'Bryan <i>Carol O'Bryan</i>	10. APPROVED BY (INCIDENT COMMANDER) Deborah Beard <i>for [Signature]</i>
----------------	--	---

ORGANIZATION ASSIGNMENT LIST (ICS 203)

1. Incident Name:		2. Operational Period: DAY-NIGHT	
AMERICAN FORK FIRE AND DIVIDE COMPLEX		Date/Time From: 07/26/2021 0600	Date/Time To: 07/27/2021 1000 TUE
3. Incident Commander(s) and Command Staff:		RECEIVING & DISTRIBUTION UNIT	
IC/UC	DEBORAH BEARD; MICHAEL CHEEK(T)	DONNIE NORVELL; IAN JOHNSON; JOSH CLARK (AF)	
DEPUTY	MARTY BENTLEY	COMMUNICATIONS UNIT	
LIAISON OFFICER	MIKE WRIGHT;BOBBY CLAYBROOK(T) JEFF GARDNER (T); BRADLEY COOPER (T)	GEORGE ROSENTHAL; SHANNON HERRING (T)	
SAFETY OFFICER	BUDDY KELLEY; PAUL CHURCHILL; LARRY HOLSOMBACK; JEFF HENDERSON (T)	MEDICAL UNIT	
		TIM EXLINE; SHERRI MCDUGAL (T)	
INFORMATION OFFICER	MICHELLE BURNETT(V); ANDY GRAY; BROOK SMITH (T); TRISH BOLES(T); CATHY DOWD (T)(V); EMILY CLEAVER (T)(V); RAY BUTLER (T)	SECURITY UNIT	
		GREG BLANKS; SASHA HERRIN; SEAN WAGGONER	
4. Agency/Organization Representative(s):		7. Operations Section:	
Agency/Organization	Name	LEAD OPS SECTION CHIEF	
USFS	CAROL HATFIELD; ALEX SIENKIEWICZ	JEFF SCHARDT	
DNRC	JOCEE HEDRICK; HEIDI CRUM	PLANNING OPS SECTION CHIEF	
		SHAWN NAGLE; KEVIN GRODI (T)	
		FIELD OPS SECTION CHIEF	
		TYLER VAN ORMER; BERT PLANTE (T)	
		Branch	
		I AMERICAN FORK	
		BRANCH DIRECTOR	
		BRIAN ELAM	
		DIVISION/GROUP	
		P UNSTAFFED	
		DIVISION/GROUP	
		A ABE PHILIPSON	
		DIVISION/GROUP	
		M STEVE GRAY	
		Branch	
		II DIVIDE COMPLEX - ELLIS	
		DIVISION/GROUP	
		E/Q MATT JOHNSON;BRIAN DELASANTOS(T)	
		Branch	
		III DIVIDE COMPLEX - BALSINGER	
		BRANCH DIRECTOR	
		JOSH GRAHAM	
		DIVISION/GROUP	
		I GREG SALANSKY; MATT MOE (T)	
		DIVISION/GROUP	
		T DANNY GORE EVAN HAUGAN (T)	
		DIVISION/GROUP	
		U BRIAN KEATING; GABRIEL TEMPLETON (T)	
		DIVISION/GROUP	
		STRUCTURE TK KENNEDY; KEVIN GRODI (T)	
		DIVISION/GROUP	
		IA MIKE WILLARDSON	
		DIVISION/GROUP	
		NIGHT TFLD JASON O'NEILL	
5. Planning Section:		7b. Air Operations Branch:	
CHIEF	CAROL O'BRYAN; THOMAS BARRETT; JESSICA HOLLINGSWORTH (V) KELLY RUSSELL (T)	AIR OPS BRANCH DIRECTOR	
RESOURCES UNIT	MELONIE SELLERS; LAILA LIENESCH JOCELYN HOWELL (T)	TIM ELDER	
SITUATION UNIT	CHRIS EVANS (V)	AIR TACTICAL GROUP SUPERVISOR	
FIRE BEHAVIOR ANALYST	KELLY CAGLE	STEVE LITTLE	
INCIDENT METEOROLOGIST	CORY MATTICE	HELIBASE MANAGER	
GIS SPECIALIST	ETHAN ROBERTSON; CHRISTIAN VOSE (V); KATHERINE WHITE	JOHN NOBLES; JOSH BARDWELL (T)	
TECHNOLOGY SUPPORT SPECIALIST	JAMES EHRlich; RUSTY BROWN; KEVIN CURRY (V); JEREMY ALBRIGHT (T)	8. Finance/Administration Section:	
DEMOBILIZATION UNIT	JEFF DEMATTEIS	CHIEF	
STATUS CHECK-IN	PAULA HENSLEY (T)	REGGIE LANIER; JASON GILLIS (T)	
TRAINING SPECIALIST	AL HOKE (V)	TIME UNIT	
		LAURA WILSON; DONNA BENTLEY (V); TAYLOR JONES	
		COMPENSATION UNIT	
		TERRI MCDONALD (V)	
		COST UNIT	
		MARLENE HUDSON	
		EQUIPMENT	
		TWANISHA BENNETT	
6. Logistics Section:			
CHIEF	JAMIE COPPLE		
DEPUTY	JIM ALDRIDGE		
SUPPLY UNIT	LEMUEL COOKSEY		
FOOD UNIT	SHANNON WILLIAMS		
GROUND SUPPORT UNIT	TODD WALLER		
EQUIPMENT MANAGER	CHAD WILEY (T); BRIAN TRUSS (T)		
ORDERING UNIT	SHERRI KITE (AF); LEIGH OSTIN (DC)		
9. Prepared By:	Name: CAROL O'BRYAN	Position/Title: PSC2	Signature: 
ICS 203	IAP Page	Date/Time: 07/25/2021 2000	



← Submit Wx Obs!

INCIDENT Weather Forecast

View Local Obs →



FORECAST NO: 4
PREDICTION FOR: Monday
SHIFT DATE: July 26, 2021
FORECAST ISSUED: 1800 July 25, 2021

NAME OF FIRE: American Fork/Divide Complex
UNIT: Helena/Lewis & Clark NF and Guster Gallatin NF
SIGNED: Cory Mottice
Incident Meteorologist

****Near Critical Fire Weather Conditions Expected Today****

WEATHER DISCUSSION: Near critical fire weather conditions are expected today for all fires for min RHs of 12-15 percent and breezy west winds at 15 to 25 mph with gusts to 30. *A thermal belt will develop again tonight, mainly over the Balsinger Fire.* Elevated fire weather conditions are expected Tuesday with more hot and dry conditions with winds shifting more to the WNW.

WEATHER FORECAST FOR THE AMERICAN FORK FIRE:

WEATHER: NEAR CRITICAL FIRE WEATHER CONDITIONS. Hot, dry, and breezy.

TEMPERATURES: 77-81 ridges and 82-86 valley bottoms

HUMIDITY: Minimums 12 to 15%

20 FT WINDS:

RIDGETOP - West 15 to 20 mph with gusts to 30 mph.

SLOPE/VALLEY - Upslope/upvalley before 0900 becoming W 10-15 mph, gusts to 25 mph.

HAINES INDEX: 6 (High chance of plume dominated activity)

CHANCE OF WETTING RAIN (> .10): 0%

STABILITY/INVERSION: Weak inversion breaking by 0900.

WEATHER FORECAST FOR THE DIVIDE COMPLEX:

WEATHER: NEAR CRITICAL FIRE WEATHER CONDITIONS. Hot, dry, and breezy.

TEMPERATURES: 76-80 ridges and 81-87 valley bottoms

HUMIDITY: Minimums 13 to 16%

20 FT WINDS:

RIDGETOP - West 15 to 20 mph with gusts to 30 mph.

SLOPE/VALLEY - Upslope/upvalley before 0900 becoming W 10-15 mph, gusts to 25 mph.

HAINES INDEX: 5-6 (Moderate to high chance of plume dominated activity)

CHANCE OF WETTING RAIN (> .10): 0%

STABILITY/INVERSION: Weak inversion breaking by 0900.

MONDAY NIGHT AND TUESDAY:

A thermal belt will develop again Monday night with minimal RH recovery, 20-25% in the mid/upper elevations and 30-40% in the valley bottoms. Expect generally SW winds at 10-20 mph within the thermal belt. Tuesday will be the hottest day with highs in the 80s everywhere. Winds will be lighter out of the WNW or upslope/upvalley in any sheltered location with min RH dropping to around 14 percent. Afternoon cumulus clouds will develop Tuesday with a 20% chance of a thunderstorm.

FIRE BEHAVIOR FORECAST

FORECAST NUMBER: # 4	TYPE OF FIRE: Wildland
FIRE NAME: American Fork/ Divide Complex	OPERATIONAL PERIOD: 07/26/2021 Day/Night Shift
DATE ISSUED: 07/26/2021	TIME ISSUED: 2000
UNIT: Helena/Lewis and Clark NF and Guster /Gallatin NF	WRITTEN: Kelly Cagle FBAN

FUEL ASSUMPTIONS: The major fuel types found on the American Fork/Divide Complex are Fuel Model 10 (mixed conifer with heavy dead/down) as well as areas of Fuel Model 2 (short grass w/timber) in the lower elevations. Current fuel conditions are favorable for extreme fire behavior within all fuel types, especially 100 hour and 1000 hour fuels. Live fuel moistures are low enough to contribute as well. Heavy dead and down will likely be the most problematic. ERC's are approaching all time high's for today's date.

WEATHER SUMMARY: Reference fire weather forecast for specifics.

WEATHER DISCUSSION: Near critical fire weather conditions are expected today for all fires for min RHs of 12-15 percent and breezy west winds at 15 to 25 mph with gusts to 30. **Haines Index today is forecasted to be a 6.**

General Fire Behavior Forecast: Weather today will create conditions for extreme fire behavior. Wind and fuel driven fire with uphill runs and torching or crowning should be expected wherever fuels exist for fire to consume. Long distance spotting is probable anywhere wind and slope align. General movement will be upslope or towards the north and east. **Expect a high resistance to control.** Expect activity to begin early in the day and to persist thru early evening and into the night hours.

Specific:

American Fork Fire Expect intense fire behavior anywhere that fuel is available for fire to consume. Slopover in South Fork/American Fork drainage will run upslope to the ridgetop/rocks and likely move easterly where fuel will allow. Expect progression to continue unabated until fire reaches rocks/grass. Blacktail fire scar should continue to limit spread to the north.

Balsinger Fire – Expect fire to continue to progress unabated to the north and east until it runs out of fuel. Fire behavior will be intense, with group torching, crown runs, and long range spotting likely. It will be difficult to suppress fire in conifer fuel under the extremely dry conditions.

Ellis Fire – Isolated single tree torching will most likely continue. It may be somewhat more frequent today with a Haines 6 and low rh. There could be reburn potential in canopy fuels if canopy is intact/brown. Any heat source in direct contact with unburned fuel could produce intense fire behavior today.

Night Shift – Expect fire to remain active well into the overnight hours. A thermal belt is forecasted that may provide low RH and breezy conditions that could allow for unexpectedly active fire behavior. Forward movement of fire with torching is certainly possible. Short canopy runs cannot be ruled out.

Fine fuel moisture today is -	2 to 3%	3 Critical Thresholds are being exceeded today!
Probability of Ignition today -	90% +	(Rh, wind and 1000 hr fuel moisture)
Max Spotting Distance Today-	½ mile or greater	Haines is at 6 for today

AIR OPERATIONS : Smoke in the area may limit aviation activities. Wind speeds should be below threshold to cause impacts to helicopter operations.

FIRE BEHAVIOR SAFETY: There is a lot of fire across the landscape today and we have a forecasted Haines 6. Today is a day that will require robust safety margins and rock solid LCES. Do not consider direct engagement.

Division/Group Assignment List (ICS 204 WF)
Controlled Unclassified Information//Basic

1. Incident Name:				3.		
AMERICAN FORK				Branch: I	Division/Group P	
2. Operational Period: DAY / NIGHT						
Date/Time From: 07/26/2021 0600 MON		Date/Time To: 07/27/2021 1000 TUE				
4. Operations Personnel						
BRANCH DIRECTOR BRIAN ELAM		FIELD OPERATIONS CHIEF TYLER VAN ORMER BERT PLANTE (T)				
LEAD OPERATIONS CHIEF JEFF SCHARDT		PLANNING OPERATIONS CHIEF SHAWN NAGLE KEVIN GRODI (T)				
DIVISION/GROUP SUPERVISOR						
5. Resources Assigned this Period						
Strike Team / Task Force / Resource Designator		LWD	Leader	Number Persons	Drop Off PT./Time	Pick Up PT./Time
UNSTAFFED						
6. Control Operations/Work Assignments:						
Task: Continue to monitor by aviation and ground resources						
Purpose: Ensure previous actions implemented continue to mitigate any threats						
End State: Will continue to be monitored by aviation and ground resources						
7. Special Instructions:						
<p>Coordinate with READ before heavy equipment use: there is potential for sensitive resources in this area Please coordinate with READ if sensitive/archeological resources are located Please provide a picture of the artifact/site and a GPS location if found Do not post photos with Archeological resources that have location information IN THE EVENT OF AN IWI CONTACT GREAT FALLS DISPATCH</p>						
8. Division/Group Communication Summary						
Function	Channel	RX Frequency N/W	RX Tone/NAC	TX Frequency N/W	TX Tone/NAC	Mode
COMMAND	1	169.7500	107.2	167.1000	107.2	A
TACTICAL	5	163.7125		163.7125	146.2	A
9. Prepared By (Resource Unit Leader)			Approved By (Planning Section Chief)		Date	Time
JOCELYN HOWELL RESL(T)			CAROL O'BRYAN		07/25/2021	2000

Division/Group Assignment List (ICS 204 WF)
Controlled Unclassified Information//Basic

1. Incident Name:				3.		
AMERICAN FORK				Branch:		Division/Group
2. Operational Period: DAY / NIGHT				I		A
Date/Time From: 07/26/2021 0600 MON		Date/Time To: 07/27/2021 1000 TUE				
4. Operations Personnel						
BRANCH DIRECTOR BRIAN ELAM		FIELD OPERATIONS CHIEF TYLER VAN ORMER BERT PLANTE (T)				
LEAD OPERATIONS CHIEF JEFF SCHARDT		PLANNING OPERATIONS CHIEF SHAWN NAGLE KEVIN GRODI (T)				
DIVISION/GROUP SUPERVISOR ABE PHILIPSON						
5. Resources Assigned this Period						
Strike Team / Task Force / Resource Designator		LWD	Leader	Number Persons	Drop Off PT./Time	Pick Up PT./Time
O-9 TFLD		08/04	DANNY LOWELL	1	AMERICAN FORK SPIKE/0600	AMERICAN FORK SPIKE/2100
O-53TFLD		07/30	ROCK BYRD	1	AMERICAN FORK SPIKE/0600	AMERICAN FORK SPIKE/2100
C-5 HC2 OREGON WOODS		07/28	ALEX TOMCHAK	20	AMERICAN FORK SPIKE/0600	AMERICAN FORK SPIKE/2100
C-8 HC2 BLUE MOUNTAIN		07/31	JESUS RAMOS	20	AMERICAN FORK SPIKE/0600	AMERICAN FORK SPIKE/2100
E-9 T6 ENG TEXAS FIRE		08/05	CARLOS MAGANA	2	AMERICAN FORK SPIKE/0600	AMERICAN FORK SPIKE/2100
E-13 T6 ENG BISHOP		08/06	EDGAR JOHNSON	3	AMERICAN FORK SPIKE/0600	AMERICAN FORK SPIKE/2100
E-14 T6 ENG BISHOP		08/06	ANNA WILDGUN	3	AMERICAN FORK SPIKE/0600	AMERICAN FORK SPIKE/2100
E-19 T6 ENG SOLOMON FIRE		08/07	TADLAM MERE	3	AMERICAN FORK SPIKE/0600	AMERICAN FORK SPIKE/2100
E-XX T6 ENG E621		07/29	MATT BIRCKSHIRE	5	AMERICAN FORK SPIKE/0600	AMERICAN FORK SPIKE/2100
E-XX T6 ENG E671 HLF		07/25	FOSTER	4	AMERICAN FORK SPIKE/0600	AMERICAN FORK SPIKE/2100
E-14 DOZ2 CONIFER LOGGING		07/28	JUSTIN MCDONOUGH	1	AMERICAN FORK SPIKE/0600	AMERICAN FORK SPIKE/2100
E-60 EMTF		07/31	GABRIEL MIZRAHI	2	AMERICAN FORK SPIKE/0600	AMERICAN FORK SPIKE/2100
E-30 WAT2 CASTLE MOUNTAIN		08/06	BRENDAN ZELANKA	1	AMERICAN FORK SPIKE/0600	AMERICAN FORK SPIKE/2100
E-2 T3 DOZ MEADOW CREEK		07/26	SHAWN HEYER	2	AMERICAN FORK SPIKE/0600	AMERICAN FORK SPIKE/2100
CHIP HLF		07/30	LOCAL	1	AMERICAN FORK SPIKE/0600	AMERICAN FORK SPIKE/2100
E-83 T1 EXCA WIRTH		08/03	WIRTH	1	AMERICAN FORK SPIKE/0600	AMERICAN FORK SPIKE/2100
E-81 T2 DUMP TRK		08/03		1	AMERICAN FORK SPIKE/0600	AMERICAN FORK SPIKE/2100
O-50 SOFR		08/06	SHAWN DUGGAR	1	AMERICAN FORK SPIKE/0600	AMERICAN FORK SPIKE/2100
6. Control Operations/Work Assignments:						
8. Division/Group Communication Summary						
Function	Channel	RX Frequency N/W	RX Tone/NAC	TX Frequency N/W	TX Tone/NAC	Mode
COMMAND	1	169.7500	107.2	167.1000	107.2	A
TACTICAL	6	166.9875		166.9875	114.8	A
9. Prepared By (Resource Unit Leader)			Approved By (Planning Section Chief)		Date	Time
JOCELYN HOWELL RESL(T)			CAROL O'BRYAN		07/25/2021	2000

Division/Group Assignment List (ICS 204 WF)
Controlled Unclassified Information//Basic

1. Incident Name:				3.			
AMERICAN FORK				Branch:		Division/Group	
2. Operational Period: DAY / NIGHT				I		A	
Date/Time From: 07/26/2021 0600 MON		Date/Time To: 07/27/2021 1000 TUE					
4. Operations Personnel							
BRANCH DIRECTOR		BRIAN ELAM		FIELD OPERATIONS CHIEF		TYLER VAN ORMER BERT PLANTE (T)	
LEAD OPERATIONS CHIEF		JEFF SCHARDT		PLANNING OPERATIONS CHIEF		SHAWN NAGLE KEVIN GRODI (T)	
DIVISION/GROUP SUPERVISOR		ABE PHILIPSON					
6. Control Operations/Work Assignments:							
<p>Task:Continue to construct hand line off of established dozer line from DIV A/M break west toward Fawn Creek. Scout and identify potential contingency line location options to the south from Blackberry Creek west toward Sweet Grass Creek ridge.</p> <p>Purpose:To improve containment along the fires southern edge and begin construction of a contingency line to the south of the main fire.</p> <p>End State:Keep fire north of the contingency line to prevent fire from crossing the National Forest boundary.</p>							
7. Special Instructions:							
<p>Coordinate with READ before heavy equipment use: there is potential for sensitive resources in this area Please coordinate with READ if sensitive/archeological resources are located Please provide a picture of the artifact/site and a GPS location if found Do not post photos with Archeological resources that have location information IN THE EVENT OF IWI CONTACT GREAT FALLS DISPATCH</p>							
8. Division/Group Communication Summary							
Function	Channel	RX Frequency N/W	RX Tone/NAC	TX Frequency N/W	TX Tone/NAC	Mode	
COMMAND	1	169.7500	107.2	167.1000	107.2	A	
TACTICAL	6	166.9875		166.9875	114.8	A	
9. Prepared By (Resource Unit Leader)			Approved By (Planning Section Chief)			Date	Time
JOCELYN HOWELL RESL(T)			CAROL O'BRYAN			07/25/2021	2000

Division/Group Assignment List (ICS 204 WF)
Controlled Unclassified Information//Basic

1. Incident Name:				3.		
AMERICAN FORK				Branch: I	Division/Group M	
2. Operational Period: DAY / NIGHT						
Date/Time From: 07/26/2021 0600 MON		Date/Time To: 07/27/2021 1000 TUE				
4. Operations Personnel						
BRANCH DIRECTOR	BRIAN ELAM			FIELD OPERATIONS CHIEF	TYLER VAN ORMER BERT PLANTE (T)	
LEAD OPERATIONS CHIEF	JEFF SCHARDT			PLANNING OPERATIONS CHIEF	SHAWN NAGLE KEVIN GRODI (T)	
DIVISION/GROUP SUPERVISOR	STEVE GRAY					
5. Resources Assigned this Period						
Strike Team / Task Force / Resource Designator	LWD	Leader	Number Persons	Drop Off PT./Time	Pick Up PT./Time	
O-77 TFLD	07/30	TODD MARKHAM	1	AMERICAN FORK SPIKE/0600	AMERICAN FORK SPIKE/2100	
E-2 T3 ENG ROCKY MOUNTAIN	08/01	SEAN RIPHENBURG	3	AMERICAN FORK SPIKE/0600	AMERICAN FORK SPIKE/2100	
E-11 T3 ENG CASTLE MOUNTAIN	08/03	JOSEPH MEYER	3	AMERICAN FORK SPIKE/0600	AMERICAN FORK SPIKE/2100	
E-38 T4 ENG LOOMIS	08/03	TAYLOR EASLEY W/EMT	3	AMERICAN FORK SPIKE/0600	AMERICAN FORK SPIKE/2100	
E-44 T4 ENG GIST	07/30	STEVE GIST W/EMT	3	AMERICAN FORK SPIKE/0600	AMERICAN FORK SPIKE/2100	
E-7 T6 ENG WHITEGRASS	08/03	WHITEGRASS	3	AMERICAN FORK SPIKE/0600	AMERICAN FORK SPIKE/2100	
E-8 T6 ENG STAX FACTOR	08/05	JOHN HOELLERICK	3	AMERICAN FORK SPIKE/0600	AMERICAN FORK SPIKE/2100	
E-10 T6 ENG CEDAR MOUNTAIN	08/03	MANSON W/EMT	4	AMERICAN FORK SPIKE/0600	AMERICAN FORK SPIKE/2100	
E-12 T6 ENG FUNK FIRE	08/05	GREG FUNK	3	AMERICAN FORK SPIKE/0600	AMERICAN FORK SPIKE/2100	
E-31 T6 ENG GIST	07/29	DON WOOD	3	AMERICAN FORK SPIKE/0600	AMERICAN FORK SPIKE/2100	
E-1 T6 ENG R.CONSTRUCTION	08/01	RICHARD DERUCHE	3	AMERICAN FORK SPIKE/0600	AMERICAN FORK SPIKE/2100	
E-22 AUSTIN LOGGING	07/28	JAMES AUSTIN	2	AMERICAN FORK SPIKE/0600	AMERICAN FORK SPIKE/2100	
O-50 SOFR	08/06	SHAWN DUGGAR	1	AMERICAN FORK SPIKE/0600	AMERICAN FORK SPIKE/2100	
6. Control Operations/Work Assignments:						
Task: Hold previous firing operation on east line						
Purpose: Ensure fire does not progress onto private property						
End State: Fire will be kept from progressing onto private property						
7. Special Instructions:						
Coordinate with READ before heavy equipment use: there is potential for sensitive resources in this area						
Please coordinate with READ if sensitive/archeological resources are located						
Please provide a picture of the artifact/site and a GPS location if found						
Do not post photos with Archeological resources that have location information						
8. Division/Group Communication Summary						
Function	Channel	RX Frequency N/W	RX Tone/NAC	TX Frequency N/W	TX Tone/NAC	Mode
COMMAND	1	169.7500	107.2	167.1000	107.2	A
TACTICAL	4	168.6125		168.6125	156.7	A
9. Prepared By (Resource Unit Leader)			Approved By (Planning Section Chief)		Date	Time
JOCELYN HOWELL RESL(T)			CAROL O'BRYAN		07/25/2021	2000

Division/Group Assignment List (ICS 204 WF)
Controlled Unclassified Information//Basic

1. Incident Name:				3.			
AMERICAN FORK				Branch:		Division/Group	
2. Operational Period: DAY / NIGHT				I		M	
Date/Time From: 07/26/2021 0600 MON		Date/Time To: 07/27/2021 1000 TUE					
4. Operations Personnel							
BRANCH DIRECTOR		BRIAN ELAM		FIELD OPERATIONS CHIEF		TYLER VAN ORMER BERT PLANTE (T)	
LEAD OPERATIONS CHIEF		JEFF SCHARDT		PLANNING OPERATIONS CHIEF		SHAWN NAGLE KEVIN GRODI (T)	
DIVISION/GROUP SUPERVISOR		STEVE GRAY					
7. Special Instructions:							
IN THE EVENT OF AN IWI CONTACT GREAT FALLS DISPATCH							
8. Division/Group Communication Summary							
Function	Channel	RX Frequency N/W	RX Tone/NAC	TX Frequency N/W	TX Tone/NAC	Mode	
COMMAND	1	169.7500	107.2	167.1000	107.2	A	
TACTICAL	4	168.6125		168.6125	156.7	A	
9. Prepared By (Resource Unit Leader)			Approved By (Planning Section Chief)			Date	Time
JOCELYN HOWELL RESL(T)			CAROL O'BRYAN			07/25/2021	2000

Division/Group Assignment List (ICS 204 WF)
Controlled Unclassified Information//Basic

1. Incident Name:		3.	
DIVIDE COMPLEX- ELLIS		Branch:	Division/Group
2. Operational Period: DAY - NIGHT		II	E/Q
Date/Time From: 07/26/2021 0600	MON		

4. Operations Personnel			
BRANCH DIRECTOR		FIELD OPERATIONS CHIEF	TYLER VAN ORMER BERT PLANTE (T)
LEAD OPERATIONS CHIEF	JEFF SCHARDT	PLANNING OPERATIONS CHIEF	SHAWN NAGLE KEVIN GRODI (T)
DIVISION/GROUP SUPERVISOR	MATTHEW JOHNSON BRIAN DELASANTOS (T)		

5. Resources Assigned this Period					
Strike Team / Task Force / Resource Designator	LWD	Leader	Number Persons	Drop Off PT./Time	Pick Up PT./Time
O-2 TFLD	07/25	MASON QUICK	1	DP10/0700	SHOWDOWN SPIKE/2100
O-71 TFLD	07/29	LUKE FOSNESS	1	DP10 /0700	SHOWDOWN SPIKE/2100
E-9 T6 ENG BISHOP	07/27	GRANT CLAYBORN	3	DP10/0700	SHOWDOWN SPIKE/2100
E-32 T6 ENG CASTLE MOUNTAIN	08/05	CHASE CORK	3	DP 10/0700	SHOWDOWN SPIKE/2100
E-33 T6 ENG CASTLE MOUNTAIN	08/05	MCCARTHY NOSIE	3	DP10/0700	SHOWDOWN SPIKE/2100
E-34 T6 ENG WINDSOR	07/26	KIRK BAUER	3	DP10/0700	SHOWDOWN SPIKE/2100
E-35 T6 ENG PEANUT PIE	08/01	DALE GOODGUN	3	DP10/0700	SHOWDOWN SPIKE/2100
E-6 T2 WAT PARK COUNTY	07/31	ELIJAH NAZARI	1	DP10/0700	SHOWDOWN SPIKE/2100

6. Control Operations/Work Assignments:

TASK: Hold and improve containment lines. Implement rehabilitation and suppression repair tactics where necessary.
PURPOSE: Ensure previous actions complemented continue to mitigate any threats.
END STATE: Fire will be kept within containment lines

7. Special Instructions:

Spike camp is located at Showdown Ski Resort.
 Dozers currently permitted on Rocking C Ranch.
 Adhere to food storage order.
 Utilize dozers on FS land as directed by ARCH / READ.

PACE:

8. Division/Group Communication Summary						
Function	Channel	RX Frequency N/W	RX Tone/NAC	TX Frequency N/W	TX Tone/NAC	Mode
COMMAND	6	173.8125	107.2	168.4750	107.2	
COMMAND	7	173.0375	107.2	167.3250	107.2	
COMMAND	8	169.8125	107.2	164.6750	107.2	
TACTICAL	5	166.7750	107.2	166.7750	107.2	
COMMAND	10	171.5000		164.0000	103.5	
AIR TO GROUND	13	166.6125		166.6125		

9. Prepared By (Resource Unit Leader)	Approved By (Planning Section Chief)	Date	Time
MELONIE SELLERS	CAROL O'BRYAN	07/25/2021	1300

Division/Group Assignment List (ICS 204 WF)
Controlled Unclassified Information//Basic

1. Incident Name:		3.	
DIVIDE COMPLEX- ELLIS		Branch:	Division/Group
2. Operational Period: DAY - NIGHT		II	E/Q
Date/Time From: 07/26/2021 0600 MON	Date/Time To: 07/27/2021 1000 TUE		
4. Operations Personnel			
BRANCH DIRECTOR		FIELD OPERATIONS CHIEF	TYLER VAN ORMER BERT PLANTE (T)
LEAD OPERATIONS CHIEF	JEFF SCHARDT	PLANNING OPERATIONS CHIEF	SHAWN NAGLE KEVIN GRODI (T)
DIVISION/GROUP SUPERVISOR	MATTHEW JOHNSON BRIAN DELASANTOS (T)		

7. Special Instructions:

Primary - Keep fire east of East Ford Road and dozer line.
Alternate - Keep fire east of Middle Ridge Road and grader line.
Contingency - Keep fire east of identified ridge; west of Den Gulch Spring, 4-wheel drive road to Ellis Canyon.
Emergency - Point Protection, identify road systems to the west.

***** IN THE EVENT OF AN IWI CONTACT COMMAND (RADIO) *****

8. Division/Group Communication Summary						
Function	Channel	RX Frequency N/W	RX Tone/NAC	TX Frequency N/W	TX Tone/NAC	Mode
COMMAND	6	173.8125	107.2	168.4750	107.2	
COMMAND	7	173.0375	107.2	167.3250	107.2	
COMMAND	8	169.8125	107.2	164.6750	107.2	
TACTICAL	5	166.7750	107.2	166.7750	107.2	
COMMAND	10	171.5000		164.0000	103.5	
AIR TO GROUND	13	166.6125		166.6125		
9. Prepared By (Resource Unit Leader)		Approved By (Planning Section Chief)		Date	Time	
MELONIE SELLERS		CAROL O'BRYAN		07/25/2021	1300	

Division/Group Assignment List (ICS 204 WF)
Controlled Unclassified Information//Basic

1. Incident Name:		3.	
DIVIDE COMPLEX - BALSINGER		Branch: III	Division/Group I
2. Operational Period: DAY - NIGHT			
Date/Time From: 07/26/2021 0600	MON	Date/Time To: 07/27/2021 2100	TUE

4. Operations Personnel			
BRANCH DIRECTOR	JOSH GRAHAM	FIELD OPERATIONS CHIEF	TYLER VAN ORMER BERTE PLANTE (T)
LEAD OPERATIONS CHIEF	JEFF SCHARDT	PLANNING OPERATIONS CHIEF	SHAWN NAGLE KEVIN GRODI (T)
DIVISION/GROUP SUPERVISOR	GREG SALANSKY MATT MOE (T)		

5. Resources Assigned this Period					
Strike Team / Task Force / Resource Designator	LWD	Leader	Number Persons	Drop Off PT./Time	Pick Up PT./Time
O-20 HEQB (T)	07/27	TYLER CORBIN	1	SHOWDOWN SPIKE/0600	SHOWDOWN SPIKE/2100
E-37 HEFT	07/31	MIKE WIRTH	5	SHOWDOWN SPIKE/0600	SHOWDOWN SPIKE/2100
E-43 T4 ENG BOSKET'S EXCAVATING	07/30	REX MILLER	3	SHOWDOWN SPIKE/0600	SHOWDOWN SPIKE/2100
E-26 T6 ENG BROWN WILDLAND	07/27	NICK BROWN	3	SHOWDOWN SPIKE/0600	SHOWDOWN SPIKE/2100
E-13 T6 ENG PEANUT PIE	08/09	SAM ELKINS	3	SHOWDOWN SPIKE/0600	SHOWDOWN SPIKE/2100
E-3 T3 DOZ MEADOW CREEK	07/26	SHAWN HEYER	2	SHOWDOWN SPIKE/0600	SHOWDOWN SPIKE/2100
E-65 LOG C & G LOGGING	08/04	COLTON GONDEIRO	1	SHOWDOWN SPIKE/0600	SHOWDOWN SPIKE/2100
E-71 T2 SKD BULL CREEK FORESTRY	08/02	JAY NORTON	1	SHOWDOWN SPIKE/0600	SHOWDOWN SPIKE/2100
E-57 T1 FELB J&E CONTRACTING	08/03	ED JUNGERS	1	SHOWDOWN SPIKE/0600	SHOWDOWN SPIKE/2100
E-59 T1 FELB A&C CONSTRUCTION	08/03	HAWN MARVIN	1	SHOWDOWN SPIKE/0600	SHOWDOWN SPIKE/2100
E-48 FELB A&L CONSTRUCTION	08/03	JOHN ANDREWS	2	SHOWDOWN SPIKE/0600	SHOWDOWN SPIKE/2100
E-73 T1 DUMP TRK	08/03	WIRTH	1	SHOWDOWN SPIKE/0600	SHOWDOWN SPIKE/2100
O-3.65 SOF2	08/04	LARRY HOLSOMBACK	1	SHOWDOWN SPIKE/0600	SHOWDOWN SPIKE/2100
O-37 EMTF	07/30	EMMA KASHIAN	1	SHOWDOWN SPIKE/0600	SHOWDOWN SPIKE/2100
READ - LOCAL		CORY GARDIPEE	1	SHOWDOWN SPIKE/0600	SHOWDOWN SPIKE/2100

8. Division/Group Communication Summary						
Function	Channel	RX Frequency N/W	RX Tone/NAC	TX Frequency N/W	TX Tone/NAC	Mode
COMMAND	6	173.8125	107.2	168.4750	107.2	A
COMMAND	7	173.0375	107.2	167.3250	107.2	A
COMMAND	8	169.8125	107.2	164.6750	107.2	A
TACTICAL	1	168.0500	107.2	168.0500	107.2	A
COMMAND	9	171.5000	107.2	164.0000	107.2	A
AIR TO GROUND	13	166.6125		166.6125		A

9. Prepared By (Resource Unit Leader)	Approved By (Planning Section Chief)	Date	Time
LAILA LIENESCH, RESL	CAROL O'BRYAN, PSC2	07/25/2021	1700

Division/Group Assignment List (ICS 204 WF)
Controlled Unclassified Information//Basic

1. Incident Name:				3.		
DIVIDE COMPLEX - BALSINGER				III	I	
2. Operational Period: DAY - NIGHT						
Date/Time From: 07/26/2021 0600 MON		Date/Time To: 07/27/2021 2100 TUE				
4. Operations Personnel						
BRANCH DIRECTOR		JOSH GRAHAM		FIELD OPERATIONS CHIEF		TYLER VAN ORMER BERTE PLANTE (T)
LEAD OPERATIONS CHIEF		JEFF SCHARDT		PLANNING OPERATIONS CHIEF		SHAWN NAGLE KEVIN GRODI (T)
DIVISION/GROUP SUPERVISOR		GREG SALANSKY MATT MOE (T)				
5. Resources Assigned this Period						
Strike Team / Task Force / Resource Designator			LWD	Leader	Number Persons	Drop Off PT./Time Pick Up PT./Time
ARCH - LOCAL				JOSH UECKER	1	SHOWDOWN SPIKE/0600 SHOWDOWN SPIKE/2100
6. Control Operations/Work Assignments:						
<p>TASK: Implement tactics to keep fire North of Divide Road. PURPOSE: Ensure fire activity does not get established South of Divide Road. END STATE: Fire activity will be kept North of Divide Road.</p>						
7. Special Instructions:						
<p>Spike Camp is located at Showdown Ski Resort. Minimize impact to the Belt Creek RD. Adhere to food storage order.</p> <p>PACE: Primary - Hold fire North of Divide Road. Alternate - Hold fire North of FR 586. Contingency - Hold fire North of Moose Creek Road FR2-4 to FR119 to FR586. Emergency - HWY 89 to FR119 Sheep Creek Road.</p> <p>Trigger points currently for EVACUATION - Tillinghast Creek, FR839, Goblin Gulch for communities to the North and East of the fire.</p> <p>*** IN THE EVENT OF AN IWI, CONTACT COMMAND (RADIO) ***</p>						
8. Division/Group Communication Summary						
Function	Channel	RX Frequency N/W	RX Tone/NAC	TX Frequency N/W	TX Tone/NAC	Mode
COMMAND	6	173.8125	107.2	168.4750	107.2	A
COMMAND	7	173.0375	107.2	167.3250	107.2	A
COMMAND	8	169.8125	107.2	164.6750	107.2	A
TACTICAL	1	168.0500	107.2	168.0500	107.2	A
COMMAND	9	171.5000	107.2	164.0000	107.2	A
AIR TO GROUND	13	166.6125		166.6125		A
9. Prepared By (Resource Unit Leader)			Approved By (Planning Section Chief)		Date	Time
LAILA LIENESCH, RESL			CAROL O'BRYAN, PSC2		07/25/2021	1700

Division/Group Assignment List (ICS 204 WF)
Controlled Unclassified Information//Basic

1. Incident Name:				3.		
DIVIDE COMPLEX - BALSINGER				III	T	
2. Operational Period: DAY - NIGHT						
Date/Time From: 07/26/2021 0600 MON		Date/Time To: 07/27/2021 2100 TUE				
4. Operations Personnel						
BRANCH DIRECTOR		JOSH GRAHAM		FIELD OPERATIONS CHIEF		TYLER VAN ORMER BERT PLANTE (T)
LEAD OPERATIONS CHIEF		JEFF SCHARDT		PLANNING OPERATIONS CHIEF		SHAWN NAGLE KEVIN GRODI (T)
DIVISION/GROUP SUPERVISOR		DANNY GORE EVAN HAUGAN (T)				
5. Resources Assigned this Period						
Strike Team / Task Force / Resource Designator		LWD	Leader	Number Persons	Drop Off PT./Time	Pick Up PT./Time
O-13 HEQB		08/03	MATT KLINDT	1	SHOWDOWN SPIKE/0600	SHOWDOWN SPIKE/2100
O-90 HEQB		07/01	EVAN KARP	1	SHOWDOWN SPIKE/0600	SHOWDOWN SPIKE/2100
E-93 T3 ENG CASTLE MOUNTAIN FIRE		08/07	JOHN TILER	3	SHOWDOWN SPIKE/0600	SHOWDOWN SPIKE/2100
E-47 T4 ENG CASTLE MOUNTAIN		08/01	BLANE FIFIELD	3	SHOWDOWN SPIKE/0600	SHOWDOWN SPIKE/2100
E-10 T6 ENG BISHOP ENTERPRISES		08/09	RANDY HAWLEY	3	SHOWDOWN SPIKE/0600	SHOWDOWN SPIKE/2100
E-12 T6 ENG PEANUT PIE		07/26	GARY HALL MATSON	3	SHOWDOWN SPIKE/0600	SHOWDOWN SPIKE/2100
E-52 T2 SKD GRIZZLY		08/01	BRAD SUTTON	2	SHOWDOWN SPIKE/0600	SHOWDOWN SPIKE/2100
E-51 T2 SKD GRIZZLY		08/01	JOSH BURDEN	2	SHOWDOWN SPIKE/0600	SHOWDOWN SPIKE/2100
E-49 T1 FELB		08/01	JESSE SHERYL	2	SHOWDOWN SPIKE/0600	SHOWDOWN SPIKE/2100
E-76 T1 FELB C&G LOGGING		08/04	JOHN STITT	1	SHOWDOWN SPIKE/0600	SHOWDOWN SPIKE/2100
E-79 LOG DENBOER LOGGING		08/04	WILLIE DENBOER	2	SHOWDOWN SPIKE/0600	SHOWDOWN SPIKE/2100
E-54 T2 CHIP COLORADO		08/02	ERAN MCARTHUR	3	SHOWDOWN SPIKE/0600	SHOWDOWN SPIKE/2100
E-77 T1 CHIP S&W DISASTER SUPPORT		08/05		3	SHOWDOWN SPIKE/0600	SHOWDOWN SPIKE/2100
E-1 T2 WAT LEVIATHAN, INC.		07/25	TRACY SCOTT	2	SHOWDOWN SPIKE/0600	SHOWDOWN SPIKE/2100
E-64 T2 WAT RMFS		08/01	RANDY WALKER	1	SHOWDOWN SPIKE/0600	SHOWDOWN SPIKE/2100
8. Division/Group Communication Summary						
Function	Channel	RX Frequency N/W	RX Tone/NAC	TX Frequency N/W	TX Tone/NAC	Mode
COMMAND	6	173.8125	107.2	164.4750	107.3	A
COMMAND	7	173.0375	107.2	167.3250	107.2	A
COMMAND	8	169.8125	107.2	164.6750	107.2	A
TACTICAL	3	168.6000	107.2	168.6000	107.2	A
COMMAND	9	171.5000	107.2	164.0000	107.2	A
AIR TO GROUND	13	166.6125		166.6125		A
9. Prepared By (Resource Unit Leader)			Approved By (Planning Section Chief)		Date	Time
LAILA LIENESCH, RESL			CAROL O'BRYAN, PSC2		07/25/2021	1700

Division/Group Assignment List (ICS 204 WF)
Controlled Unclassified Information//Basic

1. Incident Name:				3.			
DIVIDE COMPLEX - BALSINGER				III	T		
2. Operational Period: DAY - NIGHT							
Date/Time From: 07/26/2021 0600 MON		Date/Time To: 07/27/2021 2100 TUE					
4. Operations Personnel							
BRANCH DIRECTOR		JOSH GRAHAM		FIELD OPERATIONS CHIEF		TYLER VAN ORMER BERT PLANTE (T)	
LEAD OPERATIONS CHIEF		JEFF SCHARDT		PLANNING OPERATIONS CHIEF		SHAWN NAGLE KEVIN GRODI (T)	
DIVISION/GROUP SUPERVISOR		DANNY GORE EVAN HAUGAN (T)					
5. Resources Assigned this Period							
Strike Team / Task Force / Resource Designator			LWD	Leader	Number Persons	Drop Off PT./Time	Pick Up PT./Time
O-3.65 SOF2			08/04	LARRY HOLSOMBACK	1	SHOWDOWN SPIKE/0600	SHOWDOWN SPIKE/2100
E-55 AMBU			07/31	KALILOCAY WILLIE	2	SHOWDOWN SPIKE/0600	SHOWDOWN SPIKE/2100
READ - LOCAL				JUSTINA DUMONT	1	SHOWDOWN SPIKE/0600	SHOWDOWN SPIKE/2100
6. Control Operations/Work Assignments:							
TASK: Implement tactics to keep fire West of Belt Park.							
PURPOSE: Ensure fire activity does not get established within and East of Belt Park.							
END STATE: Fire activity will be kept West of Belt Park.							
7. Special Instructions:							
Spike Camp is located at Showdown Ski Resort.							
Minimize impact to the Belt Creek RD.							
Adhere to food storage order.							
PACE:							
Primary - Hold fire North of Divide Road.							
Alternate - Hold fire North of FR 586.							
Contingency - Hold fire North of Moose Creek Road FR2-4 to FR119 to FR586.							
Emergency - HWY 89 to FR119 Sheep Creek Road.							
Trigger points currently for EVACUATION - Tillinghast Creek, FR839, Goblin Gulch for communities to the North and East of the fire.							
*** IN THE EVENT OF AN IWI, CONTACT COMMAND (RADIO) ***							
8. Division/Group Communication Summary							
Function	Channel	RX Frequency N/W	RX Tone/NAC	TX Frequency N/W	TX Tone/NAC	Mode	
COMMAND	6	173.8125	107.2	164.4750	107.3	A	
COMMAND	7	173.0375	107.2	167.3250	107.2	A	
COMMAND	8	169.8125	107.2	164.6750	107.2	A	
TACTICAL	3	168.6000	107.2	168.6000	107.2	A	
COMMAND	9	171.5000	107.2	164.0000	107.2	A	
AIR TO GROUND	13	166.6125		166.6125		A	
9. Prepared By (Resource Unit Leader)			Approved By (Planning Section Chief)		Date	Time	
LAILA LIENESCH, RESL			CAROL O'BRYAN, PSC2		07/25/2021	1700	

Division/Group Assignment List (ICS 204 WF)
Controlled Unclassified Information//Basic

1. Incident Name:				3.		
DIVIDE COMPLEX - BALSINGER				Branch:		Division/Group
2. Operational Period: DAY - NIGHT				III		U
Date/Time From: 07/26/2021 0600 MON		Date/Time To: 07/27/2021 2100 TUE				
4. Operations Personnel						
BRANCH DIRECTOR		JOSH GRAHAM		FIELD OPERATIONS CHIEF		TYLER VAN ORMER BERT PLANTE (T)
LEAD OPERATIONS CHIEF		JEFF SCHARDT		PLANNING OPERATIONS CHIEF		SHAWN NAGLE KEVIN GRODI (T)
DIVISION/GROUP SUPERVISOR		BRIAN KEATING GABRIEL TEMPLETON (T)				
5. Resources Assigned this Period						
Strike Team / Task Force / Resource Designator		LWD	Leader	Number Persons	Drop Off PT./Time	Pick Up PT./Time
UNSTAFFED						
6. Control Operations/Work Assignments:						
<p>TASK: Develop and Implement tactics to keep fire moving North of Trail 336 Management Action Point (MAP) #7. PURPOSE: Ensure fire activity does not get established North of Trail 336 (MAP#7). END STATE: Fire activity will be kept South of Trail 335 (MAP#7).</p>						
7. Special Instructions:						
*** IN THE EVENT OF AN IWI, CONTACT COMMAND (RADIO) ***						
8. Division/Group Communication Summary						
Function	Channel	RX Frequency N/W	RX Tone/NAC	TX Frequency N/W	TX Tone/NAC	Mode
COMMAND	6	173.8125	107.2	164.4750	107.3	A
COMMAND	7	173.0375	107.2	167.3250	107.2	A
COMMAND	8	169.8125	107.2	164.6750	107.2	A
TACTICAL	5	166.7750	107.2	166.7750	107.2	A
COMMAND	9	171.5000	107.2	164.0000	107.2	A
AIR TO GROUND	13	166.6125		166.6125		A
9. Prepared By (Resource Unit Leader)			Approved By (Planning Section Chief)		Date	Time
LAILA LIENESCH, RESL			CAROL O'BRYAN, PSC2		07/25/2021	1700

Division/Group Assignment List (ICS 204 WF)
Controlled Unclassified Information//Basic

1. Incident Name:				3.		
DIVIDE COMPLEX - BALSINGER				Branch: III	Division/Group STRUCTURE	
2. Operational Period: DAY - NIGHT						
Date/Time From: 07/26/2021 0600 MON		Date/Time To: 07/27/2021 2100 TUE				
4. Operations Personnel						
BRANCH DIRECTOR JOSH GRAHAM		FIELD OPERATIONS CHIEF TYLER VAN ORMER BERT PLANTE (T)				
LEAD OPERATIONS CHIEF JEFF SCHARDT		PLANNING OPERATIONS CHIEF SHAWN NAGLE KEVIN GRODI (T)				
DIVISION/GROUP SUPERVISOR TK KENNEDY						
5. Resources Assigned this Period						
Strike Team / Task Force / Resource Designator		LWD	Leader	Number Persons	Drop Off PT./Time	Pick Up PT./Time
O-16 TFLD (T)		07/27	AARON STROBLE	1	SHOWDOWN SPIKE/0600	SHOWDOWN SPIKE/2100
O-140 STEN (T)		08/07	JUSTIN HOLSOMBACK	1	SHOWDOWN SPIKE/0600	SHOWDOWN SPIKE/2100
O-31 FALM JAMISON		08/02	SEAN HICKEY	2	SHOWDOWN SPIKE/0600	SHOWDOWN SPIKE/2100
E-45 T3 ENG RMFS C-5		08/08	FRANK BROAD	3	SHOWDOWN SPIKE/0600	SHOWDOWN SPIKE/2100
E-46 T4 ENG RMFS		08/01	SHANE STREHLE	3	SHOWDOWN SPIKE/0600	SHOWDOWN SPIKE/2100
E-42 T4 ENG CASTLE MOUNTAIN		07/31	RHONDINA TSOSIE	3	SHOWDOWN SPIKE/0600	SHOWDOWN SPIKE/2100
E-15 T6 ENG NORTHERN UTAH FIRE		08/06		3	SHOWDOWN SPIKE/0600	SHOWDOWN SPIKE/2100
E-17 T6 ENG UTAH FIRE COMPANY		08/06	JOHN BEAL	2	SHOWDOWN SPIKE/0600	SHOWDOWN SPIKE/2100
E-16 T6 ENG EAGLE6		08/07	DENNIS BARCUS	3	SHOWDOWN SPIKE/0600	SHOWDOWN SPIKE/2100
E-18 T6 ENG RMFS		08/07	COLE STANFORD	3	SHOWDOWN SPIKE/0600	SHOWDOWN SPIKE/2100
E-31 T2 WAT BUTLER		08/02	NICK DOLE	1	SHOWDOWN SPIKE/0600	SHOWDOWN SPIKE/2100
O-3.65 SOF2		08/04	LARRY HOLSOMBACK	1	SHOWDOWN SPIKE/0600	SHOWDOWN SPIKE/2100
O-30 EMPF		07/30	JOE DECKER	1	SHOWDOWN SPIKE/0600	SHOWDOWN SPIKE/2100
8. Division/Group Communication Summary						
Function	Channel	RX Frequency N/W	RX Tone/NAC	TX Frequency N/W	TX Tone/NAC	Mode
COMMAND	6	173.8125	107.2	164.4750	107.3	A
COMMAND	7	173.0375	107.2	167.3250	107.2	A
COMMAND	8	169.8125	107.2	164.6750	107.2	A
TACTICAL	4	166.7250	107.2	166.7250	107.2	A
COMMAND	9	171.5000	107.2	171.5000	107.2	A
AIR TO GROUND	13	166.6125		166.6125		A
9. Prepared By (Resource Unit Leader)			Approved By (Planning Section Chief)		Date	Time
LAILA LIENESCH, RESL			CAROL O'BRYAN, PSC2		07/25/2021	1700

Division/Group Assignment List (ICS 204 WF)
Controlled Unclassified Information//Basic

1. Incident Name:				3.			
DIVIDE COMPLEX - BALSINGER				III		STRUCTURE	
2. Operational Period: DAY - NIGHT							
Date/Time From: 07/26/2021 0600		Date/Time To: 07/27/2021 2100					
MON		TUE					
4. Operations Personnel							
BRANCH DIRECTOR		JOSH GRAHAM		FIELD OPERATIONS CHIEF		TYLER VAN ORMER BERT PLANTE (T)	
LEAD OPERATIONS CHIEF		JEFF SCHARDT		PLANNING OPERATIONS CHIEF		SHAWN NAGLE KEVIN GRODI (T)	
DIVISION/GROUP SUPERVISOR		TK KENNEDY					
5. Resources Assigned this Period							
Strike Team / Task Force / Resource Designator			LWD	Leader	Number Persons	Drop Off PT./Time	Pick Up PT./Time
6. Control Operations/Work Assignments:							
<p>TASK: Continue with structure assessments and mitigation measures within Division I and Division T of the Balsinger Fire. PURPOSE: Ensure any threats to structures are mitigated. END STATE: Threats to structures within Division I and Division T of the Balsinger Fire will be mitigated.</p>							
7. Special Instructions:							
<p>PACE: Primary - Point protection. Alternate - Set up sprinkler system around structures. Contingency - Coordinate with local VFDs. Emergency - Close Hwy 89.</p> <p>Trigger points currently for EVACUATION - Tillinghast Creek, FR839, Goblin Gulch for communities to the North and East of the fire.</p> <p>*** IN THE EVENT OF AN IWI, CONTACT COMMAND (RADIO) ***</p>							
8. Division/Group Communication Summary							
Function	Channel	RX Frequency N/W	RX Tone/NAC	TX Frequency N/W	TX Tone/NAC	Mode	
COMMAND	6	173.8125	107.2	164.4750	107.3	A	
COMMAND	7	173.0375	107.2	167.3250	107.2	A	
COMMAND	8	169.8125	107.2	164.6750	107.2	A	
TACTICAL	4	166.7250	107.2	166.7250	107.2	A	
COMMAND	9	171.5000	107.2	171.5000	107.2	A	
AIR TO GROUND	13	166.6125		166.6125		A	
9. Prepared By (Resource Unit Leader)			Approved By (Planning Section Chief)			Date	Time
LAILA LIENESCH, RESL			CAROL O'BRYAN, PSC2			07/25/2021	1700

Division/Group Assignment List (ICS 204 WF)
Controlled Unclassified Information//Basic

1. Incident Name:			3.			
DIVIDE COMPLEX - BALSINGER			Branch:		Division/Group	
2. Operational Period: DAY - NIGHT			III		IA	
Date/Time From: 07/26/2021 0600	MON	Date/Time To: 07/27/2021 2100				TUE
4. Operations Personnel						
BRANCH DIRECTOR		JOSH GRAHAM		FIELD OPERATIONS CHIEF	TYLER VAN ORMER BERT PLANTE (T)	
LEAD OPERATIONS CHIEF		JEFF SCHARDT		PLANNING OPERATIONS CHIEF	SHAWN NAGLE KEVIN GRODI (T)	
DIVISION/GROUP SUPERVISOR		MIKE WILLIARDSON				
5. Resources Assigned this Period						
Strike Team / Task Force / Resource Designator		LWD	Leader	Number Persons	Drop Off PT./Time	Pick Up PT./Time
O-80 TFLD		07/30	MIKE WILLIARDSON	1	SHOWDOWN SPIKE/0600	SHOWDOWN SPIKE/2100
MODULE BEET CREEK - LOCAL				8	SHOWDOWN SPIKE/0600	SHOWDOWN SPIKE/2100
E-75 T3 ENG CASTLE MOUNTAIN		07/02	SCOTT MCHENRY	3	SHOWDOWN SPIKE/0600	SHOWDOWN SPIKE/2100
E-74 T6 ENG DS FIRE		08/02	BILLIE SMOCK	3	SHOWDOWN SPIKE/0600	SHOWDOWN SPIKE/2100
E-39 T6 ENG DESERT HILLS FD		08/02	JASON SAYRE	3	SHOWDOWN SPIKE/0600	SHOWDOWN SPIKE/2100
E-38 T6 ENG6 LOOMIS FIRE **		08/03	TAYLOR EASLEY	3	SHOWDOWN SPIKE/0600	SHOWDOWN SPIKE/2100
T6 ENG631 - LOCAL			BOB BUNDY	3	SHOWDOWN SPIKE/0600	SHOWDOWN SPIKE/2100
E-4 T3 WAT STERLING		07/24	DUANE TURK	1	HELIBASE/0600	HELIBASE/2100
O-3.65 SOF2		08/04	LARRY HOLSOMBACK	1	SHOWDOWN SPIKE/0600	SHOWDOWN SPIKE/2100
6. Control Operations/Work Assignments:						
TASK: Serve as primary responding suppression resources to any initial attack within the Temporary Flight Restrictions (TFR) as identified in the Delegation of Authority. PURPOSE: Keep fire activity within the parameters of initial attack fires. END STATE: Fire is at least 90% contained and has not grown in size for one operational period.						
7. Special Instructions:						
Stage at Showdown Ski Resort E-4 WAT Sterling will stage at Helibase ** E-38 ENG Loomis Fire on loan to American Fork *** IN THE EVENT OF AN IWI, CONTACT COMMAND (RADIO) ***						
8. Division/Group Communication Summary						
Function	Channel	RX Frequency N/W	RX Tone/NAC	TX Frequency N/W	TX Tone/NAC	Mode
COMMAND	6	173.8125	107.2	168.4750	107.3	A
COMMAND	7	173.0375	107.2	167.3250	107.2	A
COMMAND	8	169.8125	107.2	164.6750	107.2	A
TACTICAL	2	168.2000	107.2	168.2000	107.2	A
COMMAND	9	171.5000	107.2	164.0000	107.2	A
AIR TO GROUND	13	166.6125		166.6125		A
9. Prepared By (Resource Unit Leader)			Approved By (Planning Section Chief)		Date	Time
LAILA LIENESCH, RESL			CAROL O'BRYAN, PSC2		07/25/2021	1700

Division/Group Assignment List (ICS 204 WF)
 Controlled Unclassified Information//Basic

1. Incident Name:		3.	
DIVIDE COMPLEX - BALSINGER		Branch:	Division/Group
2. Operational Period: DAY - NIGHT		III	NIGHT
Date/Time From: 07/26/2021 0600	MON	Date/Time To: 07/27/2021 2100	TUE

4. Operations Personnel			
BRANCH DIRECTOR	JOSH GRAHAM	FIELD OPERATIONS CHIEF	TYLER VAN ORMER BERT PLANTE (T)
LEAD OPERATIONS CHIEF	JEFF SCHARDT	PLANNING OPERATIONS CHIEF	SHAWN NAGLE KEVIN GRODI (T)
DIVISION/GROUP SUPERVISOR			

5. Resources Assigned this Period					
Strike Team / Task Force / Resource Designator	LWD	Leader	Number Persons	Drop Off PT./Time	Pick Up PT./Time
O-17 TFLD (T)	07/27	JASON O'NEAL	1	SHOWDOWN SPIKE/0600	SHOWDOWN SPIKE/2100
E-40 T6 ENG GREEN VALLEY FD	08/03	MIKE CARRAFA	3	SHOWDOWN SPIKE/0600	SHOWDOWN SPIKE/2100
E-41 T6 ENG FLAME CHASERS	08/01	EDWIN HILL	3	SHOWDOWN SPIKE/0600	SHOWDOWN SPIKE/2100

6. Control Operations/Work Assignments:
TASK: Monitor and implement tactics to hold containment lines during nighttime hours.
PURPOSE: Ensure daytime tactics implemented continue to mitigate any threats.
END STATE: Fire will be kept within the containment lines.

7. Special Instructions:
 *** IN THE EVENT OF AN IWI, CONTACT COMMAND (RADIO) ***

8. Division/Group Communication Summary						
Function	Channel	RX Frequency N/W	RX Tone/NAC	TX Frequency N/W	TX Tone/NAC	Mode
COMMAND	6	173.8125	107.2	164.4750	107.3	A
COMMAND	7	173.0375	107.2	167.3250	107.2	A
COMMAND	8	169.8125	107.2	164.6750	107.2	A
TACTICAL	3	168.6000	107.2	168.6000	107.2	A
COMMAND	9	171.5000	107.2	164.0000	107.2	A
AIR TO GROUND	13	166.6125		166.6125		A

9. Prepared By (Resource Unit Leader)	Approved By (Planning Section Chief)	Date	Time
LAILA LIENESCH, RESL	CAROL O'BRYAN, PSC2	07/25/2021	1700

AIR OPERATIONS SUMMARY

Prepared By: Tim Elder

Prepared Date: 7.25.21

Prepared Time: 1800

INCIDENT NAME: American Fork/Divide Complex		OPS PERIOD DATE: July 26, 2021	START TIME: 0800	END TIME: 2000	Sunrise: 0558	Sunset: 2101
3. REMARKS (Safety Notes, Hazards, and Air Operations Special Equipment, etc.): Hazards – Poor Visibility due to smoke, anticipate general and fire aviation traffic. Use caution when utilizing non-towered airports. See and Avoid. Helicopter requests can be made directly to the helibase via Command 1 for Ellis & Balsinger, requests from American Fork should use Sunlight repeater.		MEDEVAC: Short Haul – N401HQ - Josh Ingles 406-461-4433 Air Ambulance Frequency - "Tan" 155.3400 TX tone 156.7	TFR #: American Fork 1/1480 7nm 12,500 msl Balsinger 1/6366 7 nm 11,000 msl			

PERSONNEL	NAME	PHONE #	FREQUENCIES	AM	FM	FIXED-WING- Type/ Make-Model/ N#/ Base
AOBD	Tim Elder	863-610-0096	A/G Ellis		168.7375	AIRTANKERS – Order through Air Attack if on scene, otherwise through AOBD.
ASGS (T)	Brian Butler	970-946-8068	A/G Balsinger - A/A TFR/FW - A/A RW	125.125 134.675	166.6125	LEAD PLANES- Available at Helena
HEBM	John Nobles	239-777-8455	A/G American Fork - A/A TFR/FW - A/A RW	119.100 128.250	169.1500	AERIAL SUPERVISION- Available at Helena
HEBM (T)	Josh Bardwell	936-546-1915				
ATGS	Steve Little	828-778-2077				SEATS- Available through Great Falls Dispatch

HELICOPTERS

FAA N#	T	Y	MAKE/ MODEL	BASE	START	AVAIL	REMARKS	FAA N#	T	Y	MAKE/ MODEL	BASE	START	AVAIL	REMARKS
N948CH	1		CH-47	7S6	0800	0900	R1 Prepo	N406RG	1		Puma	HLN	0800	0900	RI Prepo
N353RC	2		UH-1H	7S6	0800	0900	R1 Prepo	N4247V	2		58T	HLN	0800	0900	RI Prepo
N210MA	2		Bell 210	7S6	0800	0900	R1 Prepo	N401HQ	3		AS350B3	HLN	0800	0900	Forest Ship

TASK/ MISSION/ ASSIGNMENT (Type/ function includes: Air Tactical, Retardant, Recon, Personnel Transport, Bucket Operations, SAR, etc.)		NAME OF PERSONNEL OR CARGO (If applicable) or instructions for tactical aircraft	MISSION START	FLY FROM	FLY TO
Recon	As Requested		As Requested		
Bucket Support / Supply Missions	As Requested		As Requested		
Personnel Transport	As Requested		As Requested		
Aerial Supervision	As Requested		As Requested		

HEALTH AND SAFETY MESSAGE

SAFETY starts with *YOU*

We are ALL accountable for SAFE behaviors

INCIDENT: **Divide Complex/American Fork Fire**

DATE: July 26, 2021

Major Hazards and Risks: Falls, and Fatigue

Extreme Fire Behavior: Today's fire behavior will be at Red Flag conditions and potential for aggressive and extreme fire behavior. Establish LCES and position vehicles for prompt movement if needed. Maintain situational awareness and keep informed on fire weather conditions and forecasts. Develop trigger points to reassess your mission and tactics.

Fatigue: This is the beginning of a long fire season and we need to closely evaluate our physical and mental fatigue. Fatigue hinders our ability to focus and concentrate, therefore decreasing our ability to maintain good situational awareness. Ways to fight fatigue: eat healthy balanced meals, exercise regularly, take mind off work or other stressors, take breaks as needed, and get plenty of sleep (6-8 hrs per night).



18. TAKING A NAP NEAR THE FIRELINE

Common Denominators on Tragedy Fire

There are 5 major common denominators of fire behavior on fatal and near-fatal fires.

1. On relatively small fires or deceptively quiet areas of large fires.
2. In relatively light fuels, such as grass, herbs, and light brush.
3. When there is an unexpected shift in wind direction or in wind speed.
4. When fire responds to topographic conditions and runs uphill.
5. Critical burn period between 1400 and 1700.

Alignment of topography and wind during the critical burning period should be considered a trigger point to reevaluate tactics.

8. Location	9. Hazard	6. Control or Abatement Action (Engineering, Administrative, PPE, Avoidance, Education, etc)
All	Helicopter Operations	<ul style="list-style-type: none"> ~ Ensure positive communication with all air resources. ~ Don't plan on air resources for medical transport or resupply. ~ Follow "Aviation Watch-Out Situations" IRPG Pg 46. ~ Refer to "Directing Bucket or Retardant Drops" IRPG Pg 58 . ~ Refer to "Aircraft Mishap Response Procedure" IRPG Pg 62. ~ Stay clear of all bucket drops when suppression actions are in place and allow 1 minute prior to re-entry. ~ Monitor A-G communications.
All	Extreme Fire Behavior	<ul style="list-style-type: none"> ~ Share weather observations with all personnel assigned to division. ~ Establish "Trigger Points" to withdraw. ~ Use "Risk Management" process prior to engaging in suppression actions IRPG Pg 1. ~ Refer to "Common Denominators of Fire Behavior Tragedy Fires" IRPG Pg 5. ~ Refer to "Alignments & Patterns for Dangerous Fire Behavior" IRPG Pg 73
All	Fireline Hazards	<ul style="list-style-type: none"> ~ Refer to "Fireline Location" considerations, IRPG Pg 84 ~ Do not work directly above or below personnel during firing and mop-up operations. ~ Watch for falling and rolling debris on steep slopes. ~ Alert crew personnel of rolling debris by yelling to affected individuals. ~ Position debris that could roll vertically on slope. ~ Avoid stepping over debris that could roll by walking around object. ~ Avoid radiant heat by wearing appropriate PPE correctly. ~ Flag and isolate all HAZMAT and alert all personnel working in Division. ~ Follow WUI recommendations, IRPG Pg 12.
All	Heat Related Illness (HRI)& Dehydration	<ul style="list-style-type: none"> ~ Refer to Heat Related Illness information, IRPG Pg 109 ~ Drink Fluids throughout operational period (6-8 qts/shift). ~ Maintain water/electrolyte ratio of 3 to 1. ~ Carry extra water on line and cache water at drop points. ~ Take Frequent breaks, minimum of 10 minutes every hour. ~ Allow out of area resources time to acclimatize before expecting peak performance.
All	Hazard Trees	<ul style="list-style-type: none"> ~ Follow "Hazard Tree Safety" guidelines, IRPG page 22. ~ Post lookouts, or use a spotter in mop-up areas with personnel. ~ Don't park vehicles or take breaks in high concentrations of hazard trees. ~ Establish trigger points for disengagement during high wind events. ~ Remember that the hazard zone extends a minimum of 2 1/2 tree heights.
All	Mop-up & Suppression Repair	<ul style="list-style-type: none"> ~ Do not work above or below personnel during rehab/mop-up operations. ~ Alert crew personnel of rolling debris by yelling to affected individuals. ~ Position debris that could roll vertically on slope. ~ Wear eye protection.
All	Chain Saw Operations	<ul style="list-style-type: none"> ~ Follow "Hazard Tree Safety" guidelines, IRPG Pg 22 ~ Follow "Procedural Felling Operations" IRPG Pg 85. ~ Look up, Look down, Look around for hazard tree indicators. ~ Only fell and buck trees within your expertise, and training. ~ Do not fall trees during high wind events. ~ Ensure proper use of all required PPE.
All	Heavy Equipment Operations	<ul style="list-style-type: none"> ~ Refer to "Working with Heavy Equipment" IRPG Pg 86 ~ Ensure communications are established with operators. ~ Use hand signals if other communications are unavailable. ~ Maintain a 300 feet exclusion area around equipment and increase it to 1 1/2 times tree height when in timber. ~ Use a spotter when backing. ~ Avoid working below heavy equipment. ~ Brush Chippers : Ensure that Job Hazard Analysis are reviewed and signed by all crew members working with or around them.

Divide Complex / American Fork - Monday, July 26, 2021

All	Structure Protection & HAZMAT	<ul style="list-style-type: none"> ~ Review "Wildland Urban Interface Firefighting" considerations, IRPG Pg 12-16~ Use "Structure Assessment" checklist, IRPG Pg 13~ Refer to "Structure Hazard Marking System" IRPG Pg 41~ Follow "HAZMAT Incident Operations" IRPG Pg 36
All	Driving & Traffic	<ul style="list-style-type: none"> ~ Practice "Defensive Driving" techniques traveling on all roads and city streets. ~ Use spotters when backing. ~ Always use headlights. ~ Yield to pedestrians, wildlife and livestock. ~ Observe posted speed limits. ~ Use the 3 second rule for following distance when driving. ~ Use chock blocks, turn wheels into hill. ~ Avoid distractions (eating, cell phones, radio). ~ Ensure that windshields are kept clean of dust and bugs.
All	Spike Camp	<ul style="list-style-type: none"> ~ Keep a clean camp. ~ Ensure communications are in place. ~ Review and observe "Line Spike" considerations, IRPG Pg. 95
All	Communications	<ul style="list-style-type: none"> ~ Maintain communication with aviation resources, and suppression organization. ~ Ensure all know frequency and protocol for contacting resources. ~ Utilize the ICS 205. ~ Utilize human repeaters when working in dead spots.
All	Wildlife & Livestock	<ul style="list-style-type: none"> ~ Watch out for wildlife & livestock inside fire area and along roadways. ~ Clean up all food and trash during each operational period. ~ Store all food in bear proof containers or in vehicles. ~ Slowly back away from any wildlife that you encounter.

COVID Mitigations and Screening Tool



Maintain Situational Awareness of The Fire Environment: 10 & 18, LCES

- Monitor each other, watch for symptoms (Firefighter Health Screening Tool).
- Never share PPE, UTV & flight helmets, radios, or other equipment
- Implement daily decontamination procedures of apparatus and equipment
- Adjust operational periods to allow for additional COVID-19 logistics.
- Plan for overnight lodging/camping/feeding scenarios that maintain separation from other fire personnel and community

WILDLAND FIRE COVID-19 SCREENING TOOL

Today or in the past 24 hours, have you had any of the following symptoms¹?

Symptom
Cough more than expected?
Shortness of breath or difficulty breathing?
Fever? Chills?
Muscle pain, outside your normal for firefighting?
Sore throat?
New loss of taste or smell?
Fatigue, outside your normal for firefighting?
Headache, outside your normal for firefighting?
Congestion or runny nose, outside your normal for firefighting?
Nausea or vomiting
Diarrhea
<i>* Take temperature with no-touch thermometer, if available *</i>

MEDICAL PLAN (ICS 206 WF)

Incident/Project Name Divide Complex/American Fork	1. Operational Period Day Shift / Night Shift July 26, 2021 1800 - July 27, 2021 1000
--	---

2. Ambulance Services			
Name	Complete Address	Phone & EMS Frequency	Advanced Life Support (ALS) Yes No
Meagher County Volunteer Ambulance	White Sulphur Springs, MT	406-547-3397 or 911	No
Belt Ambulance (Balsinger Fire Response Area)	Belt, MT	911	No

3. Air Ambulance Services		
Name	Phone	Type of Aircraft & Capability
Mercy Flight (Rotor & Fixed Wing)	800-972-4000	Air Ambulance, NVG Capable. (Use TAN Channel 15 155.3400 for contact with helicopter) For Fixed Wing Transports -Ambo will transport to White Sulphur Springs Airport
Life Flight Network	800-232-0911	Air Ambulance, NVG Capable. (Use TAN Channel 15 155.3400 for contact with helicopter)
Two Bear Rotor	406-758-5610	Rotor- Bell 429 Hoist Capable- NVG Capable. Must be ordered as Medical Transport

4. Hospitals								
Name Complete Address	GPS Datum – WGS 84 Coordinate Standard Degrees Decimal Minutes DD° MM.MMM' N - Lat DD° MM.MMM' W - Long		Travel Time		Phone	Helipad Yes No		Level of Care Facility
	Lat:	N	Air	Gnd		Yes	No	
Mtn View Medical Center 16 West Main White Sulphur Springs, MT	Lat:	N 46° 32.870	10 Min	40 Min	406-547-3321	X		Stabilize & Transfer
	Long:	W 110° 54.396						
St Peters Health 2475 E Broadway St Helena, MT	Lat:	N 46° 34.939	20 Min	60 Min	406-442-2480	X		Area Trauma Center
	Long:	W 111° 59.764						
Benefis Health System 1101 26 th St S Great Falls, MT	Lat:	N 47° 29.510	30 Min	120 Min	406-543-7271	X		Level 2 Trauma Center
	Long:	W 111° 15.588						
Univ. Of Utah Health 50 N Medical Dr. Salt Lake City, UT	Lat:	N 40° 46.361	90+ Min	NA	801-581-2700	X		Designate d Burn Center
	Long:	W 111° 50.240						

5. Division Branch Group	Area Location Capability	
DIVISION I Balsinger	EMS Responders & Capability:	EMTF Emma Kashian (Alpha)
	Equipment Available on Scene:	4x4 Vehicle BLS Kit
	Medical Emergency Channel:	Big Baldy Channel 9
	ETA for Ambulance to Scene:	
	Air:	25-60 Minutes Including Spin Up Time
	Ground:	30 Minutes to Spike 80 Minutes to Fire
	Approved Helispot:	H1
	Lat:	46.51.497
	Long:	110.40.703

DIVISION T Balsinger	EMS Responders & Capability	EMPF K Willie & EMTF A MacArthur AMBO 1
	Equipment Available on Scene:	4x4 ALS Ambulance
	Medical Emergency Channel:	
	ETA for Ambulance to Scene:	
	Air:	25-60 Minutes Including Spin Up Time
	Ground:	30 Minutes to Spike 80 Minutes to Fire
	Approved Helispot:	
	Lat:	
Long:		

MEDICAL PLAN (ICS 206 WF)

DIVISION Q Ellis	EMS Responders & Capability	
	Equipment Available on Scene:	
	Medical Emergency Channel:	
	ETA for Ambulance to Scene:	
	Air:	
	Ground:	
	Approved Helispot:	
	Lat:	
	Long:	
DIVISION E Ellis	EMS Responders & Capability	
	Equipment Available on Scene:	
	Medical Emergency Channel:	
	ETA for Ambulance to Scene:	
	Air:	
	Ground:	
	Approved Helispot:	
	Lat:	
	Long:	
American Fork	EMS Responders & Capability	EMTF Gabriel Mizrahi , EMTF Wendy Conway
	Equipment Available on Scene:	BLS 4x4 vehicle, 2 – BLS Kits
	Medical Emergency Channel:	Command 4 during day shift
	ETA for Ambulance to Scene:	
	Air:	25-60 Minutes Including Spin Up Time
	Ground:	30-60 Min dependent on location
	Approved Helispot:	
	Lat:	46.14.690
	Long:	110.10.650
ICP	EMS Responders & Capability	Sherri McDougal MEDL(t)
	Equipment Available on Scene:	100 Man Kit
	Medical Emergency Channel:	
	ETA for Ambulance to Scene:	
	Air:	25-60 Minutes Including Spin Up Time
	Ground:	5-25 Min dependent on volunteer staffing
	Approved Helispot:	
	Lat:	
	Long:	

6. Prepared By (Medical Unit Leader)	7. Date/Time	8. Reviewed By (Safety Officer)
Sherri McDougal, MEDL (t)	07/25/21 07:47 PM	ISI/Buddy Kelley SOF2

Overnight Medical Incidents will be relayed thru Big Baldy Channel 9 or Monument Channel 10. Please note Dispatch Response is shared overnight and will be initiated from Great Falls or Helena during overnight hours. Complete Medical Incident Report (8 line) per process with responding dispatch center. American Fork medical incidents that occur after 21:00, need to call Great Falls dispatch @ 406-731-5300

INCIDENT RADIO COMMUNICATIONS PLAN (ICS 205)

Controlled Unclassified Information//Basic

1. Incident Name:		2. Date/Time Prepared:		3. Operational Period:		Date/Time To:			
American Fork		07/25/2021 1600		THU		07/26/2021 2100			
4. Basic Radio Channel Use:		Channel Name/Trunked Radio System Talkgroup	Assignment	RX Freq	RX Tone/NAC	TX Freq	TX Tone/NAC	Mode (A,D, or M)	Remarks
2	1	CMD 4		169.7500	107.2	167.1000	107.2	A	
2	2	SUNLIGHT		171.5000		164.0000	107.2	A	
2	3	RED		154.0700		154.0700	131.8	A	
2	4	COMMON USE 1	DIV M	168.6125		168.6125	156.7	A	
2	5	COMMON USE 2	DIV P	163.7125		163.7125	146.2	A	
2	6	LCNF TAC	DIV A	166.9875		166.9875	114.8	A	
2	7	YELLOW		151.2200		151.2200	110.9	A	
2	8	HFDIR		171.1375		171.1375	107.2	A	
2	9	MGHR FIRE 1		154.4000		154.4000	100.0	A	
2	10	CASCADE LAW		154.7700		155.5800	151.4	A	
2	11	MEAGHER DES S		155.0250		155.0250	107.2	A	
2	12	MGHR DES RPTR		155.0250		158.7750	107.2	A	
2	13	NIFC A/G		169.1500		169.1500		A	NIFC Air to Ground
2	14	A/G 52		168.3875		168.3875		A	Local Air to Ground
2	15	Medivac		155.3400		155.3400	156.7	A	Air Ambulance
2	16	AIR GUARD		168.6250		168.6250	110.9	A	
5. Special Instructions: All Medical calls 0600-2100 use Command 4/Channel 1 to initiate IMI and between 2100 - 0600 use Sunlight Rptr to call GREAT FALLS DISPATCH and then call COM1 - 936-707-1832 to initiate IMI.									
6. Prepared By		(Communications Unit Leader)			Name: SHANNON HERRING		Signature:		
ICS 205		IAP Page			Date/Time: 07/25/21		1600		

INCIDENT RADIO COMMUNICATIONS PLAN (ICS 205)

Controlled Unclassified Information//Basic

1. Incident Name: Divide Complex		2. Date/Time Prepared: Date: 07/25/2021 Time: 1900		3. Operational Period: Date/Time From: 07/26/2021 0600 Date/Time To: 07/27/2021 0600	
4. Basic Radio Channel Use:		THU			

Zone Group	Ch #	Function	Channel Name/Trunked Radio System Talkgroup	Assignment	RX Freq	RX Tone/NAC	TX Freq	TX Tone/NAC	Mode (A,D, or M)	Remarks
1	1	Tactical	Tac 1	Div J "Balsinger"	168.0500	107.2	168.0500	107.2	A	Division India "Balsinger"
1	2	Tactical	Tac 2	IA	168.2000	107.2	168.2000	107.2	A	Initial Attack
1	3	Tactical	Tac 3	Div T "Balsinger"	168.6000	107.2	168.6000	107.2	A	Division Tango "Balsinger"
1	4	Tactical	Tac 4	Structure "Balsinger"	166.7250	107.2	166.7250	107.2	A	Structure Division "Balsinger"
1	5	Tactical	Tac 5	Div E/O "Ellis"	166.7750	107.2	166.7750	107.2	A	Division Echo/Quebec "Ellis"
1	6	Command	CMD1	Div U "Balsinger"	173.8125	107.2	168.4750	107.2	A	Division Uniform "Balsinger"
1	7	Command	CMD2	All Division	173.0375	107.2	167.3250	107.2	A	Air Ops for "Balsinger" & "Ellis"
1	8	Command	CMD3	All Division	169.8125	107.2	164.6750	107.2	A	Prophecy L.O. Showdown
1	9	Command	Big Bald	All Division	171.5000	107.2	164.6750	107.2	A	Big Baldy Mtn
1	10	Command	Monument	All Division	171.5000	107.2	164.0000	156.7	A	Monument Mtn
1	11	Tactical	Yellow		151.2200		151.2200	103.5	A	USFS Dispatch Big Baldy "Balsinger"
1	12	Tactical	Red		154.0700		154.0700		A	USFS Dispatch Monument
1	13	Air Ground	A/G PRI		166.6125		166.6125		A	BALSINGER A/G
1	14	Air Ground	A/G SEC		168.7375		168.7375		A	ELLIS A/G
1	15	Medivac	Tan		155.3400		155.3400	156.7	A	Air Ambulance
1	16	AIR GUARD	AIR GUARD		168.6250		168.6250	110.9	A	

5. Special Instructions: Use Human Repeater When Necessary. All Medical calls through Command from 0600-2100 to initial an IWI, and from 2100-0600 call Great Falls dispatch through Forest Repeaters Ch. 9 or 10 and then call COML at 936-707-1832 to initial IWI.

6. Prepared By: (Communications Unit Leader)
Name: SHANNON HERRING
Signature: _____
Date/Time: 07/25/21 1900

Weed Wash



Mandatory when:

- Checking in
- Moving between fires
- Demob

Located 1.3 miles west of US 89 on Luppold Rd (AKA Cemetery Rd).

Finance

CTRs/Shift Ticket – Please document what division you are working on in the comment section of each CTR or Shift Ticket. This will help us with cost share information on the fire.

If you spend time working on a fire other than the fire you were resource ordered for, please document that time on the CTR.

Example 1: If your resource order says the Divide fire and you work all day on the American Fork fire, write in the comments that you worked that shift on the American Fork fire.

Example 2: If you were ordered for the American Fork fire and you work from 8 am until 11 am on the Divide fire, you will need to write divide fire in the remarks column for those hours.

Document reason for Hazardous Pay on CTR.

Last working day – please contact finance via email two days prior to your demob day.

2021.divide.finance@firenet.gov

2021.americanfork.finance@firenet.gov

If you are an AD please send your casual hire form to the correct email address above. Use the email address that corresponds to the fire on your resource order.

Finance Remote Processing Procedures

To the right is access to electronic Finance forms. You can access them via the QR code or the URL. On each form are four buttons PRINT, RESET, SAVE and EMAIL. You can complete these forms on your cell phone, tablet or laptop. They are Adobe PDF forms so you will need a PDF reader app on your device. The forms were created on a laptop so the commands in your cell phone and tablet do not allow for the Save and Print functions to work. You will need to use your app's functionality to Save or Print.

Once you have completed the appropriate form for your resource please email to your supervisor for approval.

Supervisors can use their app to apply a signature or just type /s/ your name on the approval line. After approving please email the approved form back to the resource for their record and to the correct finance email:

2021.americanfork.finance@firenet.gov

2021.divide.finance@firenet.gov

Resources: Please send photos or electronic copies of Casual hire forms, contracts, Cooperative agreements, Vehicle inspection, Manifests and resource orders to the correct finance email:

2021.americanfork.finance@firenet.gov

2021.divide.finance@firenet.gov



Crew Time Report



Shift Ticket



Emergency Fuel and Oil Ticket



General Message



Human Resource Message

The mission of the Gold Team is to safely, effectively and efficiently manage the Divide Complex and American Fork Fire by maintaining a team of skilled and productive personnel. During this incident we will strive to successfully complete our mission and achieve our objectives while creating a positive, drug and alcohol free work environment for all assigned incident personnel. Consumption of drugs that alter decision making abilities, such as marijuana and alcohol, is prohibited while assigned to the incident.

The Gold Team fully supports EEO and will not tolerate sexual harassment or any form of discrimination!

All inappropriate behavior will be dealt with promptly. Disciplinary action and reporting back to an individual's home unit will be initiated as necessary.

Please report any incidents of inappropriate behavior to your supervisor, Marty Bentley or myself immediately.

Deborah Beard, Incident Commander



TRAINING MESSAGE

As of 24th e-ISuite show that there are 25 TRAINEES ordered to this Incident.

However, only 8 have checked in with the Incident Training Specialist

Check-in – If you have a position task book (PTB), please scan the QR code or click the link below to initiate the check-in process with the Incident Training Specialist. Please complete the form in its entirety. Upon completion, at your earliest convenience, **please email a copy of your qualification card and position task book cover to Al Hoke at ahoke@gfc.state.ga.us.**

For your convenience, an electronic ICS-225 or ICS-226 and Evaluation Record will be sent to you after you complete the check-in process. Electronic Evaluation Records, Trainee Data Forms can also be provided.



<https://forms.office.com/g/25cqNByg71>

Demob – In order to receive credit for your assignment, you must close out with the Incident Training Specialist prior to departure.

Close out requirements include:

1. Ensure your trainer(s)/evaluator(s) has/have initialed completed tasks in your PTB;
2. Obtain an Incident Performance Rating (please sign in the appropriate block at the bottom of the form);
3. Obtain an Evaluation Record;
4. If evaluator initialed #1 on your Evaluation Record, ensure he/she signs as final evaluator (located on the backside of your PTB cover page);
5. Email all documentation (including item #4, when appropriate) to ahoke@gfc.state.ga.us;
6. Please scan the QR code or click the link below to complete the Incident Trainee Exit Interview with the Incident Training Specialist.



<https://forms.office.com/a/vatU5x4Cch>



Southern Area Incident Management Gold Team Fire Information

[Divide Complex-Balsinger Fire Information - InciWeb the Incident Information System \(nwcg.gov\)](#)
[Divide Complex-Ellis Fire Information - InciWeb the Incident Information System \(nwcg.gov\)](#)
[American Fork Fire Information - InciWeb the Incident Information System \(nwcg.gov\)](#)

[Helena-Lewis and Clark National Forest - Home | Facebook](#)
[Custer Gallatin National Forest - Home | Facebook](#)

[Helena-Lewis and Clark National Forest - Home \(usda.gov\)](#)
[Custer Gallatin National Forest - Home \(usda.gov\)](#)

Fire Information Line: **406-272-6349** (8 a.m. – 8 p.m.)

Help us tell our story by submitting photos and videos of life on the fireline. We need your help to capture the shots that show what we're doing and how we're doing it. Please scan the code below to submit. Adding your name and location of the photo is ideal. Any extra information is appreciated, but not mandatory.

We are guests in this area. Be aware that photos posted to personnel accounts may contain sensitive information. Send all photos through Information Officer to ensure they are appropriate and represent the Gold Team and our partners well. Personal protective equipment is required in any photos that will be utilized to tell the story of the fire.

American Fork



Divide Complex



SUBMIT YOUR PHOTOS & VIDEOS

Tentative DEMOB List

Divide Complex and American Fork

INCIDENT NAME	DEMOB DATE	REQ #	RESOURCE NAME	KIND	TRV	CITY	STATE
DIVIDE COMPLEX	07/26/2021	E-6	PARK CO. RURAL FIRE	WTS2	AOV	LIVINGSTON	MT
DIVIDE COMPLEX	07/26/2021	O-2	QUICK, MASON V	TFLD	AOV	HELENA	MT
DIVIDE COMPLEX	07/27/2021	E-3	MEADOW CREEK CONT.	DOZ3	POV	SUPERIOR	MT
DIVIDE COMPLEX	07/27/2021	E-10	BISHOP, MERVIN	ENG6	POV	MALTA	MT
DIVIDE COMPLEX	07/27/2021	E-12	PEANUT PIE ENT.	ENG6	POV	BASIN	MT
DIVIDE COMPLEX	07/27/2021	E-13	PEANUT PIE ENT.	ENG6	POV	BASIN	MT
DIVIDE COMPLEX	07/27/2021	E-34	WINDSOR-SEVERANCE FPD	ENG6	AOV	WINDSOR	CO
DIVIDE COMPLEX	07/27/2021	O-31	JAMISON GENERAL LAND MNG	FMOD	AOV	KALISPELL	MT
DIVIDE COMPLEX	07/28/2021	C-5	OREGON WOODS, INC.	HC2	POV	EUGENE	OR
DIVIDE COMPLEX	07/28/2021	E-9	BISHOP, MERVIN	ENG6	POV	MALTA	MT
DIVIDE COMPLEX	07/28/2021	E-26	NICK BROWN WILDLAND	ENG6	POV	GREAT FALLS	MT
DIVIDE COMPLEX	07/28/2021	O-16	STROBEL, AARON	TFLD	AIR	LEXINGTON	KY
DIVIDE COMPLEX	07/28/2021	O-17	O'NEAL, JASON LEE	TFLD	AR	SANFORD	NC
DIVIDE COMPLEX	07/28/2021	O-20	CORBIN, TYLER	HEQB	AOV	DOLOCES	CO
AMERICAN FORK	07/28/2021	O-33	MOTTICE, CORY LOGAN	IMET	AOV	GLASGOW	MT
DIVIDE COMPLEX	07/29/2021	O-46	GOOSMAN, REBECCA	HMGB	AR	MOBILE	AL
DIVIDE COMPLEX	07/30/2021	O-71	FOSNESS, ELDO LUKE	TFLD	AOV	RED LODGE	MT

If you are on, or not on this list in error notify your incident supervisor so they can notify Demob.

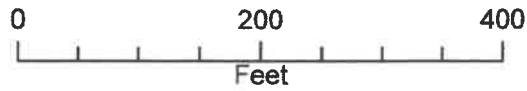
On their demob day, or last work day, demobbing personnel should:

1. Turn in all supplies, radios and computer equipment checked out from the incident.
2. They should ensure that all Unit Logs and evaluations are submitted to Documentation electronically. 2021.americanfork.docs@firenet.gov
3. Go to the Ground Support Unit for equipment inspections.
4. Go through weed wash and obtain a receipt to verify that the equipment has been cleaned. Return that receipt to demob (this can be done virtually if necessary by emailing a picture of the receipt to: 2021.americanfork.demob@firenet.gov).
5. Go to the Time Unit to complete time and review their final OF-288 or OF-286. This may be done virtually if necessary.
6. Report back to the Demobilization Unit to verify travel information home, including ETD/ETA and RON locations. This can be done virtually if necessary.

Call Jeff DeMatteis, DMOB at 937-506-6181 if you have questions.



ICP Map



IAP Map

Divide Complex American Fork Fires

Divide Complex
MTHLF005079
July 26, 2021 Day



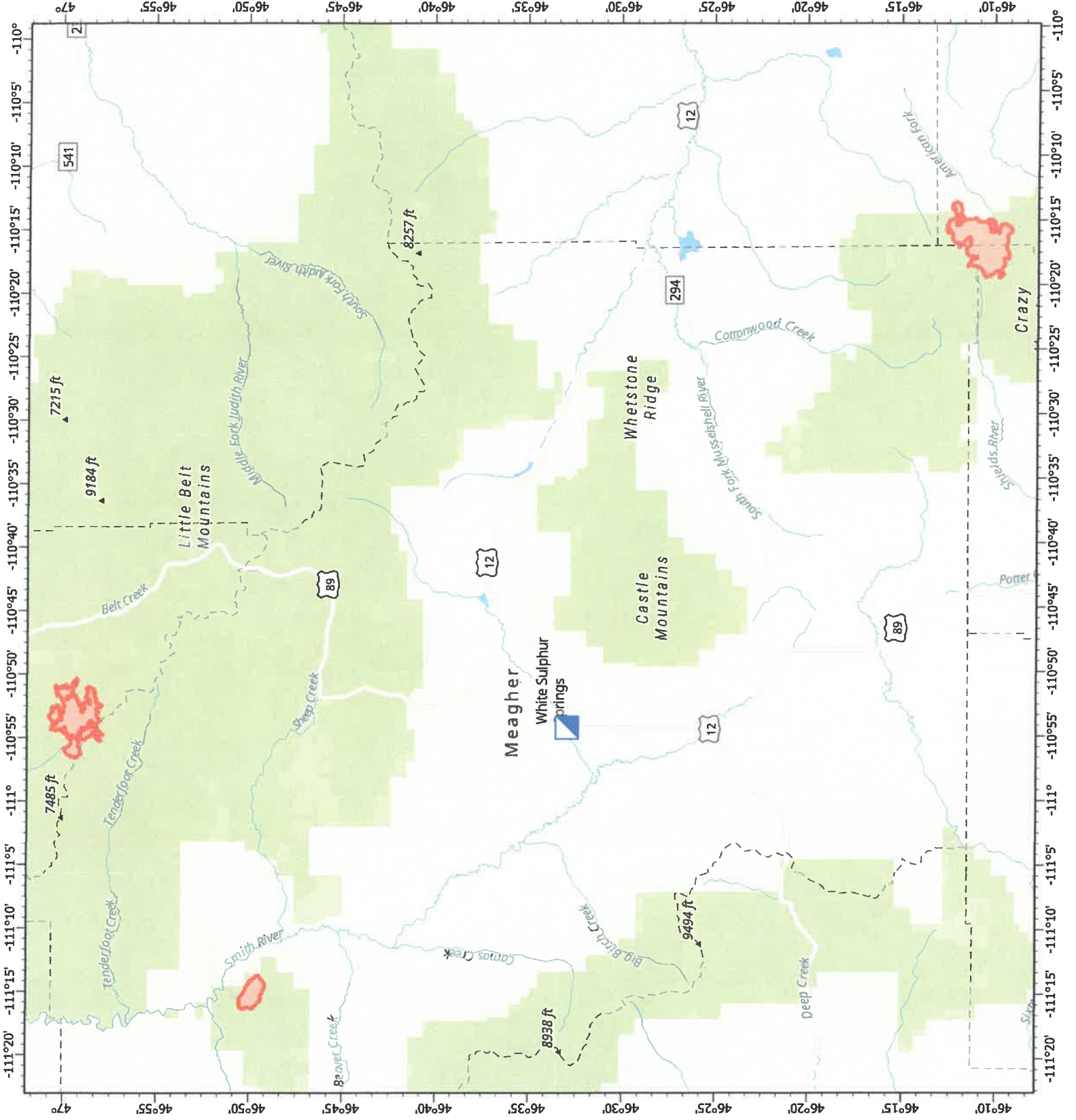
11,829 acres at 7/24/2021



Incident Command Post



Wildfire Daily Fire Perimeter



E Robertson GIS
7/24/2021 1956
Acres from IR and GPS
North American 1983 Datum, Lallong Grid

PHONE LIST - GOLD TEAM - 07/26/2021

Position	Name	Phone Number	Position	Name	Phone Number
COMMAND			PLANNING		
Incident Commander	Debbie Beard	850-524-9966	Chief	Carol O'Bryan	903-263-8704
Incident Commander	Marty Bentley	423-584-1682	Chief	Thomas Barrett	478-550-6372
Incident Commander (t)	Michael Cheek	828-231-2691	Chief (t)	Jessica Hollingsworth	601-966-0331
Liaison Officer	Michael Wright	970-819-2890	Resource Unit Leader	Melony Sellers	850-294-8400
Liaison Officer (t)	Bobby Claybrook	859-490-0653	Resource Unit Leader	Laila Lienesch	601-508-8997
Liaison Officer (t)	Jeffrey Gardner	706-260-6296	Resource Unit Leader (t)	Jocelyn Howell	541-760-1484
Covid Coordinator/Liaison (t)	Bradley Cooper	318-451-5074	Status Check-In Recorder (t)	Paula Hensley	214-934-0138
Public Information Officer	Michelle Burnett	803-920-6167	Situation Unit Leader	Christopher Evans	606-275-2140
Public Information Officer	Andrew Gray	850-797-4824	Incident Technology Supt Sp1st	James Ehrlich	928-273-4203
Public Information Officer (t)	Brook Smith	865-603-5217	Incident Technology Supt Sp1st	Rusty Brown	423-779-4731
Public Information Officer (t)	Tricia Boles	606-627-5398	Incident Technology Supt Sp1st	Kevin Curry	478-973-6231
Public Information Officer (t)	Cathryn Dowd	828-412-1521	Incident Technology Supt Sp1st (t)	Jeremy Albright	732-684-2999
Public Information Officer (t)	Ray Butler	865-250-8980	IMET	Cory Mottice	931-267-2081
Public Information Officer (t)	Emily Cleaver	270-350-8103	Fire Behavior Analyst	Kelly Cagle	330-703-7545
Safety Officer	Paul Churchill	843-259-9884	Demob	Jeff DeMatteis	336-302-0343
Safety Officer	Richard Kelley	850-447-1344	Training Specialist	Al Hoke	601-415-9080
Safety Officer	Larry Holsomback	706-280-4716	READ (Lead)	Justina Dumont	678-232-7107
Safety Officer (t)	Jeffrey Henderson	479-518-3162	READ	Cory Gardbee	315-380-4196
			READ	Randy Scarlett	406-241-0360
					406-641-0241
OPERATIONS					
Chief	Jeff Schardt	706-280-5498			
Chief	Tyler Van Ormer	540-236-8478			
Chief	Shawn Nagle	662-231-4024	LOGISTICS		
Chief	Loy Elam	336-467-7254	Chief	James Cople	620-899-1135
Chief	Josh Graham	501-545-3088	Chief	James Aldridge	919-636-2471
Chief	Bert Plante	732-904-5935	Supply Unit Leader	Lemuel Cooksey	850-508-9097
Chief (t)	Kevin Grodi	775-385-0098	Communications Unit Leader	George Rosenthal	936-707-1832
DIVS	Greg Salansky	321-408-2728	Communications Unit Leader (t)	Shannon Herring	470-201-9582
DIVS	Steve Gray	770-655-8002	Ordering Manager	Sherri Kite	850-209-2150
DIVS	Matthew Johnson	870-415-0185	Ordering Manager	Leigh Ostin	352-445-1366
DIVS	Danny Gore	478-456-8516	Ground Support Unit Leader	Todd Waller	501-337-6308
DIVS	Matthew Moe	928-220-0043	Equipment Manager	Chad Wiley	963-546-1943
			Medical Unit Leader	Tim Exline	727-243-4144
AIR OPERATIONS			Medical Unit Leader (t)	Sherri McDougal	208-803-2026
Air Operations Branch Director	Tim Elder	863-243-1438	Food Unit Leader	Shannon Williams	850-838-6715
Air Tactical Group Supervisor	Steve Little	828-778-2077	Receiving & Distribution	Ian Johnson	
Helibase Manager	John Nobles	239-777-8455	Receiving & Distribution	Donnie Norvell	254-242-8692
Helibase Manager (t)	Joshua Bardwell	936-546-1915	Security Manager	Sasha Herrin	239-300-5755
			Security Manager	Greg Blanks	912-210-3976
			Security Manager	Sean Waggoner	202-527-2639
FINANCE					
Chief	Reggie Lanier	912-314-1085			
Chief (t)	Jason Gillis	912-314-9233			
Time Unit Leader	Laura Wilson	765-427-7564			
Time	Donna Bentley (v)	706-474-3216			
Personnel Time Recorder	Taylor Jones	586-850-6616			

MEDICAL PLAN (ICS 206 WF)

Controlled Unclassified Information//Basic

Medical Incident Report

FOR A NON-EMERGENCY INCIDENT, WORK THROUGH CHAIN OF COMMAND TO REPORT AND TRANSPORT INJURED PERSONNEL AS NECESSARY.

FOR A MEDICAL EMERGENCY: IDENTIFY ON SCENE INCIDENT COMMANDER BY NAME AND POSITION AND ANNOUNCE "MEDICAL EMERGENCY" TO INITIATE RESPONSE FROM IMT COMMUNICATIONS/DISPATCH.

Use the following items to communicate situation to communications/dispatch.

1. CONTACT COMMUNICATIONS / DISPATCH (Verify correct frequency prior to starting report)

Ex: "Communications, Div. Alpha. Stand-by for Emergency Traffic."

2. INCIDENT STATUS: Provide incident summary (including number of patients) and command structure.

Ex: "Communications, I have a Red priority patient, unconscious, struck by a falling tree. Requesting air ambulance to Forest Road 1 at (Lat./Long.) This will be the Trout Meadow Medical, IC is TFLD Jones. EMT Smith is providing medical care."

Severity of Emergency / Transport Priority	<input type="checkbox"/> RED / PRIORITY 1 Life or limb threatening injury or illness. Evacuation need is IMMEDIATE <i>Ex: Unconscious, difficulty breathing, bleeding severely, 2° – 3° burns more than 4 palm sizes, heat stroke, disoriented.</i> <input type="checkbox"/> YELLOW / PRIORITY 2 Serious Injury or illness. Evacuation may be DELAYED if necessary. <i>Ex: Significant trauma, unable to walk, 2° – 3° burns not more than 1-3 palm sizes.</i> <input type="checkbox"/> GREEN / PRIORITY 3 Minor Injury or illness. Non-Emergency transport <i>Ex: Sprains, strains, minor heat-related illness.</i>	
Nature of Injury or Illness & Mechanism of Injury		<i>Brief Summary of Injury or Illness (Ex: Unconscious, Struck by Falling Tree)</i>
Transport Request		<i>Air Ambulance / Short Haul/Hoist Ground Ambulance / Other</i>
Patient Location		<i>Descriptive Location & Lat. / Long. (WGS84)</i>
Incident Name		<i>Geographic Name + "Medical" (Ex: Trout Meadow Medical)</i>
On-Scene Incident Commander		<i>Name of on-scene IC of Incident within an Incident (Ex: TFLD Jones)</i>
Patient Care		<i>Name of Care Provider (Ex: EMT Smith)</i>

3. INITIAL PATIENT ASSESSMENT: Complete this section for each patient as applicable (start with the most severe patient)

Patient Assessment: See IRPG page 106

Treatment:

4. TRANSPORT PLAN:

Evacuation Location (if different): (Descriptive Location (drop point, intersection, etc.) or Lat. / Long.) Patient's ETA to Evacuation Location:

Helispot / Extraction Site Size and Hazards:

5. ADDITIONAL RESOURCES / EQUIPMENT NEEDS:

Example: Paramedic/EMT, Crews, Immobilization Devices, AED, Oxygen, Trauma Bag, IV/Fluid(s), Splints, Rope rescue, Wheeled litter, HAZMAT, Extrication

6. COMMUNICATIONS: Identify State Air/Ground EMS Frequencies and Hospital Contacts as applicable

Function	Channel Name/Number	Receive (RX)	Tone/NAC *	Transmit (TX)	Tone/NAC *
COMMAND					
AIR-TO-GRND					
TACTICAL					

7. CONTINGENCY: Considerations: If primary options fail, what actions can be implemented in conjunction with primary evacuation method? Be thinking ahead.

8. ADDITIONAL INFORMATION: Updates/Changes, etc.

REMEMBER: Confirm ETA's of resources ordered. Act according to your level of training. Be Alert. Keep Calm. Think Clearly. Act Decisively.