

# Incident Action Plan

Day Operational Period  
Wednesday 7/28/2021 0600-2100

Night Operational Period  
Wednesday 07/28/2021 1800 –  
Thursday 07/29/2021 1000



**American Fork**  
MT-HLF-005087 P1N57E (0115)

**Divide Complex**  
MT-HLF-005079 P1N5FU (0115)



Check-in



American Fork Maps



Divide Complex Maps

[2021.divide.finance@firenet.gov](mailto:2021.divide.finance@firenet.gov)

[2021.americanfork.finance@firenet.gov](mailto:2021.americanfork.finance@firenet.gov)

Morning Ops Briefing (0700) Zoom link: Zoom ID: 160 317 4872  
Dial in # 1-551-285-1373

1. INCIDENT NAME <b>American Fork Fire and Divide Complex</b>	2. OPERATIONAL PERIOD: DAY/NIGHT <b>07/28/2021 Wednesday 0600 - 07/29/2021 Thursday 1000</b>	2. DATE PREPARED <b>07/27/2021</b>	3. TIME PREPARED <b>1900</b>
--	--	---------------------------------------	---------------------------------

**3. GENERAL CONTROL OBJECTIVES FOR THE INCIDENT (INCLUDE ALTERNATIVES)**

**Management Objectives**

- 1) Protection of human life and safety is the first priority for all actions taken on a wildfire and can overrule all other strategic/management objectives and incident requirements.
- 2) Base management decisions on meeting objectives while also minimizing the risk of COVID-19 exposures to responders and the public. COVID-19 considerations may alter how you meet goals but should not lead to higher risk tactics.
- 3) Maintain and strengthen relationships with the Helena-Lewis and Clark NF, Custer-Gallatin NF, private landowners, the public, cooperators and partners by providing timely and accurate information.
- 4) Use management actions that ensure fire personnel safety from contact with bears through compliance with the Food Storage Special Order.
- 5) Protect the unique attributes of impacted watersheds through actions that minimize sedimentation and invasive species movement.
- 6) Protect impact to cultural resources through consultation with local forest specialists.

**Control Objectives**

**Divide Complex**

- 1) Protection of human life and safety is the first priority for all actions taken and shall override all other incident control objectives. Evaluate risk vs. benefit in strategic and tactical planning and only commit operational resources to actions that have the highest probability of success.
- 2) Protect Tenderfoot Experimental Forest infrastructure within the tenderfoot drainage.
- 3) Protect the communities of Belt Park, Deer Creek Estates, Monarch, Neihart and the Hwy 89 corridor to avoid loss or damage to private lands and critical infrastructure.
- 4) Use mechanized equipment to establish and improve control lines where approved to minimize risk and exposure to firefighting resources.
- 5) Provide initial attack resources to respond to any new ignitions within the TFR area to limit potential size and growth.

**American Fork Fire**

- 1) Protection of human life and safety is the first priority for all actions taken and shall override all other incident control objectives. Evaluate risk vs. benefit in strategic and tactical planning and only commit operational resources to actions that have the highest probability of success.
- 2) Keep fire on Forest Service lands to protect and limit impact to adjacent landowner property and values at risk.
- 3) Provide initial attack resources to respond to any new ignitions within the TFR area to limit potential size and growth.

**4. Operational Period Command Emphasis:**

**\*\*\* L C E S \*\*\***

**5. General Situational Awareness: *\*\*Erratic and gusty winds to 45 mph possible with any shower or storm. Keeping in mind gusty winds are possible far away from the nearest precipitation.\*\**** Cooler

temperatures are in store for today with min RHs reaching the mid-20s. Winds will be southeasterly for most areas, though sheltered locations will still see upslope/upvalley winds. There will be a chance for an isolated shower/thunderstorm today across all the fires. Isolated shower chances will continue through the overnight hours. *Any shower/storm can produce erratic and gusty winds to 45mph.* Better recoveries (45-55%) are expected tonight with a partly cloudy sky.

**7. GENERAL MESSAGE**

**See the attached Safety Message for more information.**

- |   |  |   |
|---|--|---|
| <input checked="" type="checkbox"/> ORGANIZATION LIST (ICS 203) | <input checked="" type="checkbox"/> MEDICAL PLAN (ICS 206)     | <input checked="" type="checkbox"/> WEATHER SPOT FORECAST   |
| <input checked="" type="checkbox"/> ASSIGNMENT LIST (ICS 204)   | <input checked="" type="checkbox"/> AIR OPS. SUMMARY (ICS 220) | <input checked="" type="checkbox"/> FIRE BEHAVIOR FORECAST  |
| <input checked="" type="checkbox"/> COMMUNICATION PLAN (I)      | <input checked="" type="checkbox"/> SAFETY MESSAGE             | <input checked="" type="checkbox"/> INCIDENT EMERGENCY PLAN |

ICS 202


9. PREPARED BY (PLANNING SECTION CHIEF)

Carol O'Bryan


10. APPROVED BY (INCIDENT COMMANDER)

Deborah Beard

## ORGANIZATION ASSIGNMENT LIST (ICS 203)

<b>1. Incident Name:</b>		<b>2. Operational Period:</b> DAY-NIGHT	
AMERICAN FORK FIRE AND DIVIDE COMPLEX		Date/Time From: 07/28/2021 0600	Date/Time To: 07/29/2021 1000 THU
<b>3. Incident Commander(s) and Command Staff:</b>		GROUND SUPPORT UNIT	TODD WALLER
IC/UC	DEBORAH BEARD; MICHAEL CHEEK(T)	EQUIPMENT MANAGER	CHAD WILEY (T); BRIAN TRUSS (T)
DEPUTY	MARTY BENTLEY	ORDERING UNIT	SHERRI KITE (AMERICAN FORK) LEIGH OSTIN (DIVIDE COMPLEX)
LIAISON OFFICER	MIKE WRIGHT; BOBBY CLAYBROOK (T) JEFF GARDNER (T); BRADLEY COOPER (T)	RECEIVING & DISTRIBUTION UNIT	DONNIE NORVELL; IAN JOHNSON (DIVIDE COMPLEX) JOSH CLARK (AMERICAN FORK)
SAFETY OFFICER	BUDDY KELLEY; PAUL CHURCHILL; LARRY HOLSOMBACK; SHAWN DUGGAR; JEFF HENDERSON (T)	COMMUNICATIONS UNIT	GEORGE ROSENTHAL SHANNON HERRING (T)
INFORMATION OFFICER	MICHELLE BURNETT (V); ANDY GRAY; BROOK SMITH (T); TRISH BOLES (T); CATHY DOWD (T)(V), EMILY CLEAVER (T)(V); RAY BUTLER (T); NATHAN WATERS (T)	MEDICAL UNIT	TIM EXLINE SHERRI MCDUGAL (T)
<b>4. Agency/Organization Representative(s):</b>		SECURITY UNIT	GREG BLANKS; SASHA HERRIN; SEAN WAGGONER
<b>Agency/Organization</b>	<b>Name</b>	<b>7. Operations Section:</b>	
USFS	CAROL HATFIELD; ALEX SIENKIEWICZ	LEAD OPS SECTION CHIEF	JEFF SCHARDT
DNRC	JOCEE HEDRICK; HEIDI CRUM	PLANNING OPS SECTION CHIEF	SHAWN NAGLE; KEVIN GRODI (T)
<b>5. Planning Section:</b>		FIELD OPS SECTION CHIEF	TYLER VAN ORMER BERT PLANTE (T)
CHIEF	CAROL O'BRYAN; THOMAS BARRETT; JESSICA HOLLINGSWORTH (V) KELLY RUSSELL (T)	<b>Branch</b>	<b>I AMERICAN FORK</b>
RESOURCES UNIT	MELONIE SELLERS; LAILA LIENESCH JOCELYN HOWELL (T)	BRANCH DIRECTOR	BRIAN ELAM
SITUATION UNIT	CHRIS EVANS (V)	DIVISION/GROUP	A ABE PHILIPSON
FIRE BEHAVIOR ANALYST	KELLY CAGLE	DIVISION/GROUP	M STEVE GRAY CURTIS LITTLEFIELD
INCIDENT METEOROLOGIST	CORY MOTTICE	DIVISION/GROUP	P UNSTAFFED
GIS SPECIALIST	ETHAN ROBERTSON; CHRISTIAN VOSE (V); KATHERINE WHITE KEYLONDA ARMWOOD; CLELL BRITT (T)	<b>Branch</b>	<b>II DIVIDE COMPLEX - ELLIS</b>
TECHNOLOGY SUPPORT SPECIALIST	JAMES EHRlich; RUSTY BROWN; KEVIN CURRY (V);	DIVISION/GROUP	E/Q MATT JOHNSON BRIAN DELASANTOS (T)
DEMOBILIZATION UNIT	JEFF DEMATTEIS	<b>Branch</b>	<b>III DIVIDE COMPLEX - BALSINGER</b>
STATUS CHECK-IN	PAULA HENSLEY (T)	BRANCH DIRECTOR	JOSH GRAHAM
TRAINING SPECIALIST	AL HOKE (V)	DIVISION/GROUP	I GREG SALANSKY MATT MOE (T)
<b>6. Logistics Section:</b>		DIVISION/GROUP	T DANNY GORE EVAN HAUGAN (T)
CHIEF	JAMIE COPPLE; DAVID MCVAY	DIVISION/GROUP	U BRIAN KEATING GABRIEL TEMPLETON (T)
DEPUTY	JIM ALDRIDGE	DIVISION/GROUP	STRUCTURE TK KENNEDY
SUPPLY UNIT	LEMUEL COOKSEY	DIVISION/GROUP	IA TFLD MIKE WILLARDSON
FOOD UNIT	SHANNON WILLIAMS	DIVISION/GROUP	NIGHT TFLD DARIN GROFF
GROUND SUPPORT UNIT	TODD WALLER	<b>7b. Air Operations Branch:</b>	
<b>9. Prepared By:</b> Name: CAROL O'BRYAN		AIR OPS BRANCH DIRECTOR	TIM ELDER
Position/Title: PSC2		AIR TACTICAL GROUP SUPERVISOR	STEVE LITTLE
ICS 203	IAP Page	Signature: 	
Date/Time: 07/27/2021 1400			

## ORGANIZATION ASSIGNMENT LIST (ICS 203)

<b>1. Incident Name:</b>		<b>2. Operational Period:</b> DAY-NIGHT	
AMERICAN FORK FIRE AND DIVIDE COMPLEX		Date/Time From: 07/28/2021 0600 WED	Date/Time To: 07/29/2021 1000 THU
HELIBASE MANAGER	JOHN NOBLES; JOSH BARDWELL (T)		
AIR SUPPORT GROUP SUPERVISOR	BRIAN BUTLER (T)		
<b>8. Finance/Administration Section:</b>			
CHIEF	REGGIE LANIER JASON GILLIS (T)		
TIME UNIT	LAURA WILSON; DONNA BENTLEY (V); TAYLOR JONES		
COMPENSATION UNIT	TERRI MCDONALD (V)		
COST UNIT	MARLENE HUDSON		
EQUIPMENT	TWANISHA BENNETT		
<b>9. Prepared By:</b>	<b>Name:</b> CAROL O'BRYAN	<b>Position/Title:</b> PSC2	<b>Signature:</b>
ICS 203	IAP Page	Date/Time: 07/27/2021 1400	



←Submit Wx Obs!

# INCIDENT Weather Forecast



View Local Obs →

**FORECAST NO:** 6  
**PREDICTION FOR:** Wednesday  
**SHIFT DATE:** July 28, 2021  
**FORECAST ISSUED:** 1800 July 27, 2021

**NAME OF FIRE:** American Fork/Divide Complex  
**UNIT:** Helena/Lewis & Clark NF and Guster Gallatin NF  
**SIGNED:** Cory Mottice  
**Incident Meteorologist**

***\*\*Erratic and gusty winds to 45 mph possible with any shower or storm. Keep in mind gusty winds are possible far away from the nearest precipitation.\*\****

**WEATHER DISCUSSION:** Cooler temperatures are in store for today with min RHs reaching the mid-20s. Winds will be southeasterly for most areas, though sheltered locations will still see upslope/upvalley winds. There will be a chance for an isolated shower/thunderstorm today across all the fires. Isolated shower chances will continue through the overnight hours. *Any shower/storm can produce erratic and gusty winds to 45 mph.* Better RH recoveries (45-55%) are expected tonight with a partly cloudy sky.

**WEATHER FORECAST FOR THE DIVIDE COMPLEX & AMERICAN FORK:**

**WEATHER:** Cooler and less dry conditions are expected today with a partly cloudy sky. 30% chance of a shower/storm. Generally less than 0.05” of rainfall is expected. *Erratic wind gusts to 45 mph possible with any shower/storm.*

**TEMPERATURES:** 70-74 ridges and 75-79 valley bottoms

**HUMIDITY:** Minimums 26 to 30%

**20 FT WINDS:**

**RIDGETOP - SE** at 10 to 15 mph with gusts to 25 mph.

**SLOPE/VALLEY - SE** at 8 to 12 mph with gusts to 20 mph for unsheltered locations.

Upslope/upvalley at 5 to 10 mph for sheltered areas.

**HAINES INDEX:** 3 (Very low chance of plume dominated activity)

**CHANCE OF WETTING RAIN (> .10):** 10%

**STABILITY/INVERSION:** Weak inversion breaking by 1000.

**OUTLOOK FOR TONIGHT:**

A slight chance of a shower with gusty winds will exist through tonight. RH recoveries will be much better with recoveries reaching 45-55%. Skies will be mostly cloudy early becoming partly cloudy. Temperatures will fall to the mid and upper 50s for most areas and the mid and upper 40s for the valley locations.

**OUTLOOK FOR THURSDAY AND FRIDAY:**

Partly cloudy skies are expected for Thursday with highs mostly in the low and mid 70s. A better chance for an afternoon thunderstorm will exist Thursday with lighter upslope/upvalley winds. Similar temperatures are expected Friday with perhaps a little more sunshine and only a 20% chance of a shower or storm. Winds will turn NE on Friday at 10 to 15 mph with gusts to 25 mph. Minimum humidity on Thursday will be around 35 percent and around 30 percent on Friday.

**FIRE BEHAVIOR FORECAST**

<b>FORECAST NUMBER: # 6</b>	<b>TYPE OF FIRE: Wildland</b>
<b>FIRE NAME: American Fork/ Divide Complex</b>	<b>OPERATIONAL PERIOD: 07/28/2021 Day/Night Shift</b>
<b>DATE ISSUED: 07/27/2021</b>	<b>TIME ISSUED: 2000</b>
<b>UNIT: Helena/Lewis and Clark NF and Custer/Gallatin NF</b>	<b>WRITTEN: Kelly Cagle FBAN</b>

**FUEL ASSUMPTIONS:** The major fuel types found on the American Fork/Divide Complex are Fuel Model 10 (mixed conifer with heavy dead/down) and Fuel Model 2 (short grass w/timber) in the lower elevations. **Current fuel conditions are favorable for extreme fire behavior within all fuel types**, especially 100 hour and 1000 hour fuels. Live fuel moistures are low and will contribute to fire spread. Grass fuels are becoming more available as well. Heavy dead and down will likely be the most problematic. ERC's are approaching all time high's for today's date.

**WEATHER SUMMARY: Reference fire weather forecast for specifics.**

**WEATHER DISCUSSION:** Cooler temperatures are in store for today with min RHs reaching the mid-20s. Winds will be southeasterly for most areas, though sheltered locations will still see upslope/upvalley winds. There will be a chance for an isolated shower/thunderstorm today across all the fires.

**General Fire Behavior Forecast:** General movement will be upslope or towards the north and west today. Current fuel conditions encourage extreme fire behavior. Fuel driven fire with uphill runs and torching or crowning should be expected. Long distance spotting is probable anywhere wind and slope align. **Expect a high resistance to control.** Expect activity to begin early in the day and to persist thru early evening and into the night hours.

**Specific:**

**American Fork Fire** - Westward push into Shields River drainage will continue today. Expect progression to continue unabated until fire reaches rocks/grass. Blacktail fire scar should continue to limit spread to the north. East side should be manageable once fire reaches grass fuels.

**Balsinger Fire** – Expect fire to continue to progress unabated to the north and west until it runs out of fuel. Fire behavior could be intense, with group torching, crown runs, and long range spotting likely. It will be difficult to suppress fire in conifer fuel under the extremely dry conditions.

**Ellis Fire** – Smoldering and isolated single tree torching will most likely continue. Any heat source in direct contact with unburned fuel could produce intense fire behavior.

**Night Shift** – Expect fire to remain active well into the overnight hours – possibly midnight or later. Unexpectedly intense fire behavior is possible. Forward movement of fire with torching or short canopy runs cannot be ruled out.

\*\*\*\*\*

Fine fuel moisture today is -	3 to 4%	1000 hour fuels 9 to 12%
Probability of Ignition today -	80% +	Live fuel moistures are critically low
Max Spotting Distance Today-	1/2 mile or greater	Haines is at 3 for today

**AIR OPERATIONS:** Smoke may hamper aviation activities today.

**FIRE BEHAVIOR SAFETY:** Lightning is possible today. Stay abreast of any impending weather and reference Thunderstorm Safety in IRPG page21.

**Division/Group Assignment List (ICS 204 WF)**  
**Controlled Unclassified Information//Basic**

<b>1. Incident Name:</b>				<b>3.</b>		
AMERICAN FORK				<b>Branch:</b>		<b>Division/Group</b>
<b>2. Operational Period: DAY / NIGHT</b>				<b>I</b>		<b>A</b>
Date/Time From: 07/28/2021 0600 WED		Date/Time To: 07/29/2021 2100 THU				
<b>4. Operations Personnel</b>						
<b>BRANCH DIRECTOR</b>		BRIAN ELAM		<b>FIELD OPERATIONS CHIEF</b>		TYLER VAN ORMER BERT PLANTE (T)
<b>LEAD OPERATIONS CHIEF</b>		JEFF SCHARDT		<b>PLANNING OPERATIONS CHIEF</b>		SHAWN NAGLE KEVIN GRODI (T)
<b>DIVISION/GROUP SUPERVISOR</b>		ABE PHILIPSON				
<b>5. Resources Assigned this Period</b>						
Strike Team / Task Force / Resource Designator		LWD	Leader	Number Persons	Drop Off PT./Time	Pick Up PT./Time
O-9 TFLD		08/04	DANNY LOWELL	1	AMERICAN FORK SPIKE/0600	AMERICAN FORK SPIKE/2100
O-53 TFLD		07/30	ROCK BYRD	1	AMERICAN FORK SPIKE/0600	AMERICAN FORK SPIKE/2100
C-5 HC2 OREGON WOODS		08/03	ALEX TOMCHAK	20	AMERICAN FORK SPIKE/0600	AMERICAN FORK SPIKE/2100
C-8 HC2 BLUE MOUNTAIN		07/31	JESUS RAMOS	20	AMERICAN FORK SPIKE/0600	AMERICAN FORK SPIKE/2100
E-11 T3 ENG CASTLE MOUNTAIN		08/03	JOSEPH MEYER	3	AMERICAN FORK SPIKE/0600	AMERICAN FORK SPIKE/2100
E-9 T6 ENG TEXAS FIRE		08/05	CARLOS MAGANA	2	AMERICAN FORK SPIKE/0600	AMERICAN FORK SPIKE/2100
E-10 T6 ENG CEDAR MOUNTAIN		08/03	MANSON W/EMT	4	AMERICAN FORK SPIKE/0600	AMERICAN FORK SPIKE/2100
E-19 T6 ENG SOLOMON FIRE		08/07	TADLAM MERE	3	AMERICAN FORK SPIKE/0600	AMERICAN FORK SPIKE/2100
E-XX T6 ENG E621		07/29	MATT BIRCKSHIRE	5	AMERICAN FORK SPIKE/0600	AMERICAN FORK SPIKE/2100
E-14 DOZ2 CONIFER LOGGING		07/28	JUSTIN MCDONOUGH	1	AMERICAN FORK SPIKE/0600	AMERICAN FORK SPIKE/2100
E-3 T3 DOZ MEADOW CREEK		08/12	SHAWN HEYER	2	AMERICAN FORK SPIKE/0600	AMERICAN FORK SPIKE/2100
E-30 WAT2 CASTLE MOUNTAIN		08/06	BRENDAN ZELANKA	1	AMERICAN FORK SPIKE/0600	AMERICAN FORK SPIKE/2100
CHIP HLF		07/30	LOCAL	1	AMERICAN FORK SPIKE/0600	AMERICAN FORK SPIKE/2100
E-83 T1 EXCA WIRTH		08/03	WIRTH	1	AMERICAN FORK SPIKE/0600	AMERICAN FORK SPIKE/2100
E-60 EMTF		07/31	GABRIEL MIZRAHI	2	AMERICAN FORK SPIKE/0600	AMERICAN FORK SPIKE/2100
O-50 SOF2		08/06	SHAWN DUGGAR	1	AMERICAN FORK SPIKE/0600	AMERICAN FORK SPIKE/2100
READ			RANDY SCARLETT	1	AMERICAN FORK SPIKE/0600	AMERICAN FORK SPIKE/2100
ARCH			DOUG KOSIK	1	AMERICAN FORK SPIKE/0600	AMERICAN FORK SPIKE/2100
<b>6. Control Operations/Work Assignments:</b>						
<b>8. Division/Group Communication Summary</b>						
Function	Channel	RX Frequency N/W	RX Tone/NAC	TX Frequency N/W	TX Tone/NAC	Mode
COMMAND	1	169.7500	107.2	167.1000	107.2	A
TACTICAL	6	166.9875		166.9875	114.8	A
<b>9. Prepared By (Resource Unit Leader)</b>			<b>Approved By (Planning Section Chief)</b>		<b>Date</b>	<b>Time</b>
JOCELYN HOWELL RESL(T)			CAROL O'BRYAN		07/27/2021	1700

**Division/Group Assignment List (ICS 204 WF)**  
**Controlled Unclassified Information//Basic**

<b>1. Incident Name:</b>				<b>3.</b>			
AMERICAN FORK				<b>Branch:</b>		<b>Division/Group</b>	
<b>2. Operational Period: DAY / NIGHT</b>				<b>I</b>		<b>A</b>	
Date/Time From: 07/28/2021 0600      WED		Date/Time To: 07/29/2021 2100      THU					
<b>4. Operations Personnel</b>							
<b>BRANCH DIRECTOR</b>		BRIAN ELAM		<b>FIELD OPERATIONS CHIEF</b>		TYLER VAN ORMER BERT PLANTE (T)	
<b>LEAD OPERATIONS CHIEF</b>		JEFF SCHARDT		<b>PLANNING OPERATIONS CHIEF</b>		SHAWN NAGLE KEVIN GRODI (T)	
<b>DIVISION/GROUP SUPERVISOR</b>		ABE PHILIPSON					
<b>6. Control Operations/Work Assignments:</b>							
<p><b>Task:</b>Continue to construct hand line off of established dozer line from DIV A/M break west toward Fawn Creek. Scout and identify potential contingency line location options to the south from Blackberry Creek west toward Sweet Grass Creek ridge.</p> <p><b>Purpose:</b>To improve containment along the fires southern edge and begin construction of a contingency line to the south of the main fire.</p> <p><b>End State:</b>Keep fire north of the contingency line to prevent fire from crossing the National Forest boundary.</p>							
<b>7. Special Instructions:</b>							
<p>Coordinate with READ before heavy equipment use: there is potential for sensitive resources in this area  Please coordinate with READ if sensitive/archeological resources are located  Please provide a picture of the artifact/site and a GPS location if found  Do not post photos with Archeological resources that have location information</p> <p><b>**IN THE EVENT OF AN IWI:</b>  <b>CONTACT DIVIDE COMMUNICATIONS ON COMMAND</b>  IF UNREACHABLE, CONTACT BY PHONE AT 201-401-6806</p>							
<b>8. Division/Group Communication Summary</b>							
<b>Function</b>		<b>Channel</b>	<b>RX Frequency N/W</b>	<b>RX Tone/NAC</b>	<b>TX Frequency N/W</b>	<b>TX Tone/NAC</b>	<b>Mode</b>
COMMAND		1	169.7500	107.2	167.1000	107.2	A
TACTICAL		6	166.9875		166.9875	114.8	A
<b>9. Prepared By (Resource Unit Leader)</b>				<b>Approved By (Planning Section Chief)</b>		<b>Date</b>	<b>Time</b>
JOCELYN HOWELL RESL(T)				CAROL O'BRYAN		07/27/2021	1700



**Division/Group Assignment List (ICS 204 WF)**  
Controlled Unclassified Information//Basic

1. Incident Name:			3.			
AMERICAN FORK			Branch:		Division/Group	
2. Operational Period: DAY / NIGHT			I		M	
Date/Time From: 07/28/2021 0600	WED	Date/Time To: 07/29/2021 2100				THU
4. Operations Personnel						
BRANCH DIRECTOR		BRIAN ELAM		FIELD OPERATIONS CHIEF		
LEAD OPERATIONS CHIEF		JEFF SCHARDT		PLANNING OPERATIONS CHIEF		
DIVISION/GROUP SUPERVISOR		STEVE GRAY CURTIS LITTLEFIELD (T)		TYLER VAN ORMER BERT PLANTE (T) SHAWN NAGLE KEVIN GRODI (T)		
5. Resources Assigned this Period						
Strike Team / Task Force / Resource Designator		LWD	Leader	Number Persons	Drop Off PT./Time	Pick Up PT./Time
O-77 TFLD		07/30	TODD MARKHAM	1	AMERICAN FORK SPIKE/0600	AMERICAN FORK SPIKE/2100
E-2 T3 ENG ROCKY MOUNTAIN		08/01	SEAN RIPHENBURG	3	AMERICAN FORK SPIKE/0600	AMERICAN FORK SPIKE/2100
E-38 T4 ENG LOOMIS		08/03	TAYLOR EASLEY W/EMT	3	AMERICAN FORK SPIKE/0600	AMERICAN FORK SPIKE/2100
E-44 T4 ENG GIST		07/30	STEVE GIST W/EMT	3	AMERICAN FORK SPIKE/0600	AMERICAN FORK SPIKE/2100
E-7 T6 ENG WHITEGRASS		08/03	WHITEGRASS	3	AMERICAN FORK SPIKE/0600	AMERICAN FORK SPIKE/2100
E-8 T6 ENG STAX FACTOR		08/05	JOHN HOELLERICK	3	AMERICAN FORK SPIKE/0600	AMERICAN FORK SPIKE/2100
E-12 T6 ENG FUNK FIRE		08/05	GREG FUNK	3	AMERICAN FORK SPIKE/0600	AMERICAN FORK SPIKE/2100
E-13 T6 ENG BISHOP		08/06	EDGAR JOHNSON	3	AMERICAN FORK SPIKE/0600	AMERICAN FORK SPIKE/2100
E-14 T6 ENG BISHOP		08/06	ANNA WILDGUN	3	AMERICAN FORK SPIKE/0600	AMERICAN FORK SPIKE/2100
E-31 T6 ENG GIST		07/29	DON WOOD	3	AMERICAN FORK SPIKE/0600	AMERICAN FORK SPIKE/2100
E-22 T6 ENG FLAT ROCK		08/10			AMERICAN FORK SPIKE/0600	AMERICAN FORK SPIKE/2100
E-1 T6 ENG R.CONSTRUCTION		08/01	RICHARD DERUCHE	3	AMERICAN FORK SPIKE/0600	AMERICAN FORK SPIKE/2100
O-50 SOF2		08/06	SHAWN DUGGAR	1	AMERICAN FORK SPIKE/0600	AMERICAN FORK SPIKE/2100
6. Control Operations/Work Assignments:						
<b>Task:</b> Hold previous firing operations on east line <b>Purpose:</b> Ensure fire does not progress onto private property <b>End State:</b> Fire will be kept from progressing onto private property						
7. Special Instructions:						
Coordinate with READ before heavy equipment use: there is potential for sensitive resources in this area Please coordinate with READ if sensitive/archeological resources are located Please provide a picture of the artifact/site and a GPS location if found Do not post photos with Archeological resources that have location information						
8. Division/Group Communication Summary						
Function	Channel	RX Frequency N/W	RX Tone/NAC	TX Frequency N/W	TX Tone/NAC	Mode
COMMAND	1	169.7500	107.2	167.1000	107.2	A
TACTICAL	4	168.6125		168.6125	156.7	A
9. Prepared By (Resource Unit Leader)		Approved By (Planning Section Chief)		Date	Time	
JOCELYN HOWELL RESL(T)		CAROL O'BRYAN		07/27/2021	1700	

**Division/Group Assignment List (ICS 204 WF)**  
Controlled Unclassified Information//Basic

<b>1. Incident Name:</b>				<b>3.</b>			
AMERICAN FORK				<b>Branch:</b>		<b>Division/Group</b>	
<b>2. Operational Period: DAY / NIGHT</b>				<b>I</b>		<b>M</b>	
Date/Time From: 07/28/2021 0600 WED		Date/Time To: 07/29/2021 2100 THU					
<b>4. Operations Personnel</b>							
<b>BRANCH DIRECTOR</b>		BRIAN ELAM		<b>FIELD OPERATIONS CHIEF</b>		TYLER VAN ORMER BERT PLANTE (T)	
<b>LEAD OPERATIONS CHIEF</b>		JEFF SCHARDT		<b>PLANNING OPERATIONS CHIEF</b>		SHAWN NAGLE KEVIN GRODI (T)	
<b>DIVISION/GROUP SUPERVISOR</b>		STEVE GRAY CURTIS LITTLEFIELD (T)					
<b>7. Special Instructions:</b>							
<p><b><u>**IN THE EVENT OF AN IWI:</u></b>  <b>CONTACT DIVIDE COMMUNICATIONS ON COMMAND</b>  <b>IF UNREACHABLE, CONTACT BY PHONE AT 201-401-6806</b></p>							
<b>8. Division/Group Communication Summary</b>							
<b>Function</b>	<b>Channel</b>	<b>RX Frequency N/W</b>	<b>RX Tone/NAC</b>	<b>TX Frequency N/W</b>	<b>TX Tone/NAC</b>	<b>Mode</b>	
COMMAND	1	169.7500	107.2	167.1000	107.2	A	
TACTICAL	4	168.6125		168.6125	156.7	A	
<b>9. Prepared By (Resource Unit Leader)</b>			<b>Approved By (Planning Section Chief)</b>			<b>Date</b>	<b>Time</b>
JOCELYN HOWELL RESL(T)			CAROL O'BRYAN			07/27/2021	1700

**Division/Group Assignment List (ICS 204 WF)**  
**Controlled Unclassified Information//Basic**

1. Incident Name:				3.			
AMERICAN FORK				Branch:		Division/Group	
2. Operational Period: DAY / NIGHT				I		P	
Date/Time From: 07/28/2021 0600 WED		Date/Time To: 07/29/2021 2100 THU					
4. Operations Personnel							
BRANCH DIRECTOR		BRIAN ELAM		FIELD OPERATIONS CHIEF		TYLER VAN ORMER BERT PLANTE (T)	
LEAD OPERATIONS CHIEF		JEFF SCHARDT		PLANNING OPERATIONS CHIEF		SHAWN NAGLE KEVIN GRODI (T)	
DIVISION/GROUP SUPERVISOR							
5. Resources Assigned this Period							
Strike Team / Task Force / Resource Designator		LWD	Leader	Number Persons	Drop Off PT./Time	Pick Up PT./Time	
UNSTAFFED							
6. Control Operations/Work Assignments:							
<b>Task:</b> Continue to monitor by aviation and ground resources <b>Purpose:</b> Ensure previous actions implemented continue to mitigate any threats <b>End State:</b> Will continue to be monitored by aviation and ground resources							
7. Special Instructions:							
Coordinate with READ before heavy equipment use: there is potential for sensitive resources in this area Please coordinate with READ if sensitive/archeological resources are located Please provide a picture of the artifact/site and a GPS location if found Do not post photos with Archeological resources that have location information  <b>**IN THE EVENT OF AN IWI:</b> <b>CONTACT DIVIDE COMMUNICATIONS ON COMMAND</b> <b>IF UNREACHABLE CONTACT BY PHONE AT 201-401-6806</b>							
8. Division/Group Communication Summary							
Function	Channel	RX Frequency N/W	RX Tone/NAC	TX Frequency N/W	TX Tone/NAC	Mode	
COMMAND	1	169.7500	107.2	167.1000	107.2	A	
TACTICAL	5	163.7125		163.7125	146.2	A	
9. Prepared By (Resource Unit Leader)			Approved By (Planning Section Chief)			Date	Time
JOCELYN HOWELL RESL(T)			CAROL O'BRYAN			07/27/2021	1700

**Division/Group Assignment List (ICS 204 WF)**  
**Controlled Unclassified Information//Basic**

<b>1. Incident Name:</b>			<b>3.</b>			
DIVIDE COMPLEX- ELLIS			<b>Branch:</b>		<b>Division/Group</b>	
<b>2. Operational Period:</b> DAY - NIGHT			II		E/Q	
Date/Time From: 07/28/2021 0600	WED	Date/Time To: 07/29/2021 1000				
<b>4. Operations Personnel</b>						
<b>BRANCH DIRECTOR</b>				<b>FIELD OPERATIONS CHIEF</b>		TYLER VAN ORMER BERT PLANTE (T)
<b>LEAD OPERATIONS CHIEF</b>		JEFF SCHARDT		<b>PLANNING OPERATIONS CHIEF</b>		SHAWN NAGLE KEVIN GRODI (T)
<b>DIVISION/GROUP SUPERVISOR</b>		MATTHEW JOHNSON BRIAN DELASANTOS (T)				
<b>5. Resources Assigned this Period</b>						
Strike Team / Task Force / Resource Designator		LWD	Leader	Number Persons	Drop Off PT./Time	Pick Up PT./Time
O-71 TFLD		07/29	LUKE FOSNESS	1	DP10 /0900	SHOWDOWN SPIKE/2100
E-9 T6 ENG BISHOP			GRANT CLAYBORN	3	DP10/0900	SHOWDOWN SPIKE/2100
E-20 T6 ENG		08/10		3	DP10/0900	SHOWDOWN SPIKE/2100
E-32 T6 ENG CASTLE MOUNTAIN		08/05	CHASE CORK	3	DP 10/0900	SHOWDOWN SPIKE/2100
E-33 T6 ENG CASTLE MOUNTAIN		08/05	MCCARTHY NOSIE	3	DP10/0900	SHOWDOWN SPIKE/2100
E-35 T6 ENG PEANUT PIE		08/01	DALE GOODGUN	3	DP10/0900	SHOWDOWN SPIKE/2100
E-6 T2 WAT PARK COUNTY		07/31	ELIJAH NAZARI	1	DP10/0900	SHOWDOWN SPIKE/2100
<b>6. Control Operations/Work Assignments:</b>						
<b>TASK:</b> Hold and improve containment lines. Implement rehabilitation and suppression repair tactics where necessary.						
<b>PURPOSE:</b> Ensure previous actions complemented continue to mitigate any threats.						
<b>END STATE:</b> Fire will be kept within containment lines						
<b>7. Special Instructions:</b>						
<b>Spike camp is located at Showdown Ski Resort.</b>						
Adhere to food storage order.						
Utilize dozers on FS land as directed by ARCH / READ.						
<b>8. Division/Group Communication Summary</b>						
Function	Channel	RX Frequency N/W	RX Tone/NAC	TX Frequency N/W	TX Tone/NAC	Mode
COMMAND	6	173.8125	107.2	168.4750	107.2	A
COMMAND	7	173.0375	107.2	167.3250	107.2	A
COMMAND	8	169.8125	107.2	164.6750	107.2	A
TACTICAL	5	166.7750	107.2	166.7750	107.2	A
COMMAND	10	171.5000		164.0000	103.5	A
AIR TO GROUND	13	166.6125		166.6125		A
<b>9. Prepared By (Resource Unit Leader)</b>		<b>Approved By (Planning Section Chief)</b>			<b>Date</b>	<b>Time</b>
MELONIE SELLERS		CAROL O'BRYAN			07/27/2021	1700

**Division/Group Assignment List (ICS 204 WF)**  
Controlled Unclassified Information//Basic

1. Incident Name:			3.			
DIVIDE COMPLEX- ELLIS			Branch:  <b>II</b>	Division/Group  <b>E/Q</b>		
2. Operational Period: <b>DAY - NIGHT</b>						
Date/Time From: 07/28/2021 0600	WED	Date/Time To: 07/29/2021 1000	THU			
4. <b>Operations Personnel</b>						
<b>BRANCH DIRECTOR</b>		<b>FIELD OPERATIONS CHIEF</b>	TYLER VAN ORMER BERT PLANTE (T)			
<b>LEAD OPERATIONS CHIEF</b>	JEFF SCHARDT	<b>PLANNING OPERATIONS CHIEF</b>	SHAWN NAGLE KEVIN GRODI (T)			
<b>DIVISION/GROUP SUPERVISOR</b>	MATTHEW JOHNSON BRIAN DELASANTOS (T)					
7. Special Instructions:						
<p><b>** IN THE EVENT OF AN IWI:</b> <b>Contact DIVIDE COMMUNICATIONS ON COMMAND</b> <b>If unreachable, contact by phone at 201-401-6806</b></p>						
8. <b>Division/Group Communication Summary</b>						
Function	Channel	RX Frequency N/W	RX Tone/NAC	TX Frequency N/W	TX Tone/NAC	Mode
COMMAND	6	173.8125	107.2	168.4750	107.2	A
COMMAND	7	173.0375	107.2	167.3250	107.2	A
COMMAND	8	169.8125	107.2	164.6750	107.2	A
TACTICAL	5	166.7750	107.2	166.7750	107.2	A
COMMAND	10	171.5000		164.0000	103.5	A
AIR TO GROUND	13	166.6125		166.6125		A
9. Prepared By (Resource Unit Leader)		Approved By (Planning Section Chief)		Date	Time	
MELONIE SELLERS		CAROL O'BRYAN		07/27/2021	1700	

**Division/Group Assignment List (ICS 204 WF)**  
Controlled Unclassified Information//Basic

<b>1. Incident Name:</b>				<b>3.</b>		
DIVIDE COMPLEX - BALSINGER				<b>III</b>	<b>I</b>	
<b>2. Operational Period:</b> DAY - NIGHT						
Date/Time From: 07/28/2021 0600 WED		Date/Time To: 07/29/2021 1000 THU				
<b>4. Operations Personnel</b>						
<b>BRANCH DIRECTOR</b> JOSH GRAHAM		<b>FIELD OPERATIONS CHIEF</b> TYLER VAN ORMER BERTE PLANTE (T)				
<b>LEAD OPERATIONS CHIEF</b> JEFF SCHARDT		<b>PLANNING OPERATIONS CHIEF</b> SHAWN NAGLE KEVIN GRODI (T)				
<b>DIVISION/GROUP SUPERVISOR</b> GREG SALANSKY MATT MOE (T)						
<b>5. Resources Assigned this Period</b>						
Strike Team / Task Force / Resource Designator		LWD	Leader	Number Persons	Drop Off PT./Time	Pick Up PT./Time
O-150 TFLD		08/09	RYAN HOPKINS	1	SHOWDOWN SPIKE/0600	SHOWDOWN SPIKE/2100
O-20 HEQB (T)			TYLER CORBIN	1	SHOWDOWN SPIKE/0600	SHOWDOWN SPIKE/2100
C-14 IHC MIDWIN		08/09	JERRY HOFFMAN	20	SHOWDOWN SPIKE/0600	SHOWDOWN SPIKE/2100
E-37 HEFT		07/31	MIKE WIRTH	5	SHOWDOWN SPIKE/0600	SHOWDOWN SPIKE/2100
E-43 T4 ENG BOSKET'S EXCAVATING		07/30	REX MILLER	3	SHOWDOWN SPIKE/0600	SHOWDOWN SPIKE/2100
E-13 T6 ENG PEANUT PIE		08/09	SAM ELKINS	3	SHOWDOWN SPIKE/0600	SHOWDOWN SPIKE/2100
E-21 T6 ENG HANKS		08/09	THOMAS HANKS	3	SHOWDOWN SPIKE/0600	SHOWDOWN SPIKE/2100
E-26 T6 ENG BROWN WILDLAND			NICK BROWN	3	SHOWDOWN SPIKE/0600	SHOWDOWN SPIKE/2100
E-109 T6 ENG GIST		08/10	LEN WALLACE	3	SHOWDOWN SPIKE/0600	SHOWDOWN SPIKE/2100
E-3 T3 DOZ MEADOW CREEK			SHAWN HEYER	2	SHOWDOWN SPIKE/0600	SHOWDOWN SPIKE/2100
E-71 T2 SKD BULL CREEK FORESTRY		08/02	JAY NORTON	1	SHOWDOWN SPIKE/0600	SHOWDOWN SPIKE/2100
E-22 T3 SKD AUSTIN LOGGING		07/30	JAMES AUSTIN	2	SHOWDOWN SPIKE/0600	SHOWDOWN SPIKE/2100
E-48 T1 FELB A & C CONSTRUCTION		08/04	JOHN ANDREWS	1	SHOWDOWN SPIKE/0600	SHOWDOWN SPIKE/2100
E-50 T1 FELB 24/7		08/01	TIM WERK	2	SHOWDOWN SPIKE/0600	SHOWDOWN SPIKE/2100
E-57 T1 FELB J & E CONTRACTING		08/03	ED JUNGERS	1	SHOWDOWN SPIKE/0600	SHOWDOWN SPIKE/2100
<b>8. Division/Group Communication Summary</b>						
Function	Channel	RX Frequency N/W	RX Tone/NAC	TX Frequency N/W	TX Tone/NAC	Mode
COMMAND	6	173.8125	107.2	168.4750	107.2	A
COMMAND	7	173.0375	107.2	167.3250	107.2	A
COMMAND	8	169.8125	107.2	164.6750	107.2	A
TACTICAL	1	168.0500	107.2	168.0500	107.2	A
COMMAND	9	171.5000	107.2	164.0000	156.7	A
AIR TO GROUND	13	166.6125		166.6125		A
<b>9. Prepared By (Resource Unit Leader)</b>			<b>Approved By (Planning Section Chief)</b>		<b>Date</b>	<b>Time</b>
LAILA LIENESCH, RESL			CAROL O'BRYAN, PSC2		07/27/2021	2000

**Division/Group Assignment List (ICS 204 WF)**  
Controlled Unclassified Information//Basic

1. Incident Name:			3.			
DIVIDE COMPLEX - BALSINGER			Branch:		Division/Group	
2. Operational Period: DAY - NIGHT			III		I	
Date/Time From: 07/28/2021 0600 WED		Date/Time To: 07/29/2021 1000 THU				
4. Operations Personnel						
BRANCH DIRECTOR		JOSH GRAHAM		FIELD OPERATIONS CHIEF		
				TYLER VAN ORMER BERTE PLANTE (T)		
LEAD OPERATIONS CHIEF		JEFF SCHARDT		PLANNING OPERATIONS CHIEF		
				SHAWN NAGLE KEVIN GRODI (T)		
DIVISION/GROUP SUPERVISOR		GREG SALANSKY MATT MOE (T)				
5. Resources Assigned this Period						
Strike Team / Task Force / Resource Designator		LWD	Leader	Number Persons	Drop Off PT./Time	Pick Up PT./Time
E-59 T1 FELB A & C CONSTRUCTION		08/03	SHAWN MARVIN	1	SHOWDOWN SPIKE/0600	SHOWDOWN SPIKE/2100
E-72 T2 EXCA WIRTH		08/02	PHIL WIRTH	1	SHOWDOWN SPIKE/0600	SHOWDOWN SPIKE/2100
E-83 T2 EXCA WIRTH		08/02	WIRTH	1	SHOWDOWN SPIKE/0600	SHOWDOWN SPIKE/2100
E-88 T2 EXCA WIRTH		08/04	CODY WIRTH	2	SHOWDOWN SPIKE/0600	SHOWDOWN SPIKE/2100
E-65 LOG C & G LOGGING		08/03	COLTON GONDEIRO	1	SHOWDOWN SPIKE/0600	SHOWDOWN SPIKE/2100
E-81 T1 DUMP TRK2		08/03	MATT FULLER	2	SHOWDOWN SPIKE/0600	SHOWDOWN SPIKE/2100
E-73 T1 DUMP TRK		08/03	TANNER CLONINGER	1	SHOWDOWN SPIKE/0600	SHOWDOWN SPIKE/2100
O-3.65 SOF2		08/04	LARRY HOLSOMBACK	1	SHOWDOWN SPIKE/0600	SHOWDOWN SPIKE/2100
E-55 AMBU *** ROVING		07/31	KALILOCAY WILLIE	2	SHOWDOWN SPIKE/0600	SHOWDOWN SPIKE/2100
O-37 EMTF		07/30	EMMA KASHIAN	1	SHOWDOWN SPIKE/0600	SHOWDOWN SPIKE/2100
READ - LOCAL			CORY GARDIPEE	1	SHOWDOWN SPIKE/0600	SHOWDOWN SPIKE/2100
ARCH - LOCAL			JOSH UECKER	1	SHOWDOWN SPIKE/0600	SHOWDOWN SPIKE/2100
6. Control Operations/Work Assignments:						
<b>TASK:</b> Implement tactics to keep fire North of Divide Road.						
<b>PURPOSE:</b> Ensure fire activity does not get established South of Divide Road.						
<b>END STATE:</b> Fire activity will be kept North of Divide Road.						
7. Special Instructions:						
8. Division/Group Communication Summary						
Function	Channel	RX Frequency N/W	RX Tone/NAC	TX Frequency N/W	TX Tone/NAC	Mode
COMMAND	6	173.8125	107.2	168.4750	107.2	A
COMMAND	7	173.0375	107.2	167.3250	107.2	A
COMMAND	8	169.8125	107.2	164.6750	107.2	A
TACTICAL	1	168.0500	107.2	168.0500	107.2	A
COMMAND	9	171.5000	107.2	164.0000	156.7	A
AIR TO GROUND	13	166.6125		166.6125		A
9. Prepared By (Resource Unit Leader)			Approved By (Planning Section Chief)		Date	Time
LAILA LIENESCH, RESL			CAROL O'BRYAN, PSC2		07/27/2021	2000

**Division/Group Assignment List (ICS 204 WF)**  
Controlled Unclassified Information//Basic

<b>1. Incident Name:</b>		<b>3.</b>	
DIVIDE COMPLEX - BALSINGER		<b>Branch:</b>	<b>Division/Group</b>
<b>2. Operational Period:</b> DAY - NIGHT		<b>III</b>	<b>I</b>
Date/Time From: 07/28/2021 0600	WED	Date/Time To: 07/29/2021 1000	THU

<b>4. Operations Personnel</b>			
<b>BRANCH DIRECTOR</b>	JOSH GRAHAM	<b>FIELD OPERATIONS CHIEF</b>	TYLER VAN ORMER BERTE PLANTE (T)
<b>LEAD OPERATIONS CHIEF</b>	JEFF SCHARDT	<b>PLANNING OPERATIONS CHIEF</b>	SHAWN NAGLE KEVIN GRODI (T)
<b>DIVISION/GROUP SUPERVISOR</b>	GREG SALANSKY MATT MOE (T)		

**7. Special Instructions:**

**Spike Camp is located at Showdown Ski Resort.**  
Minimize impact to the Belt Creek RD.  
Adhere to food storage order.

Trigger points currently for **EVACUATION** - Tillinghast Creek, FR839, Goblin Gulch for communities to the North and East of the fire.

**\*\* IN THE EVENT OF AN IWI:**  
Contact **DIVIDE COMMUNICATIONS ON COMMAND**  
If unreachable, contact by phone at **201-401-6806**

<b>8. Division/Group Communication Summary</b>						
Function	Channel	RX Frequency N/W	RX Tone/NAC	TX Frequency N/W	TX Tone/NAC	Mode
COMMAND	6	173.8125	107.2	168.4750	107.2	A
COMMAND	7	173.0375	107.2	167.3250	107.2	A
COMMAND	8	169.8125	107.2	164.6750	107.2	A
TACTICAL	1	168.0500	107.2	168.0500	107.2	A
COMMAND	9	171.5000	107.2	164.0000	156.7	A
AIR TO GROUND	13	166.6125		166.6125		A
<b>9. Prepared By (Resource Unit Leader)</b>		<b>Approved By (Planning Section Chief)</b>		<b>Date</b>	<b>Time</b>	
LAILA LIENESCH, RESL		CAROL O'BRYAN, PSC2		07/27/2021	2000	



**Division/Group Assignment List (ICS 204 WF)**  
**Controlled Unclassified Information//Basic**

<b>1. Incident Name:</b>				<b>3.</b>		
DIVIDE COMPLEX - BALSINGER				<b>Branch:</b>  <b>III</b>	<b>Division/Group</b>  <b>T</b>	
<b>2. Operational Period:</b> DAY - NIGHT						
Date/Time From: 07/28/2021 0600 WED		Date/Time To: 07/29/2021 1000 THU				
<b>4. Operations Personnel</b>						
<b>BRANCH DIRECTOR</b> JOSH GRAHAM		<b>FIELD OPERATIONS CHIEF</b> TYLER VAN ORMER		BERT PLANTE (T)		
<b>LEAD OPERATIONS CHIEF</b> JEFF SCHARDT		<b>PLANNING OPERATIONS CHIEF</b> SHAWN NAGLE		KEVIN GRODI (T)		
<b>DIVISION/GROUP SUPERVISOR</b> DANNY GORE EVAN HAUGAN (T)						
<b>5. Resources Assigned this Period</b>						
Strike Team / Task Force / Resource Designator	LWD	Leader	Number Persons	Drop Off PT./Time	Pick Up PT./Time	
O-13 HEQB	08/03	MATT KLINDT	1	SHOWDOWN SPIKE /0600	SHOWDOWN SPIKE /2100	
E-93 T3 ENG CASTLE MOUNTAIN FIRE	08/07	JOHN TILER	3	SHOWDOWN SPIKE /0600	SHOWDOWN SPIKE /2100	
E-47 T4 ENG CASTLE MOUNTAIN	07/31	BLANE FIFIELD	3	SHOWDOWN SPIKE /0600	SHOWDOWN SPIKE /2100	
E-10 T6 ENG BISHOP ENTERPRISES	08/07	RANDY HAWLEY	3	SHOWDOWN SPIKE /0600	SHOWDOWN SPIKE /2100	
E-12 T6 ENG PEANUT PIE		SAM ELLEINS	3	SHOWDOWN SPIKE /0600	SHOWDOWN SPIKE /2100	
E-25 T6 ENG HART	08/04		3	SHOWDOWN SPIKE /0600	SHOWDOWN SPIKE /2100	
E-24 T6 ENG TORCH FIRE	08/09	DONAVUN DAVIS	3	SHOWDOWN SPIKE /0600	SHOWDOWN SPIKE /2100	
E-52 T2 SKD GRIZZLY	08/01	BRAD SUTTON	2	SHOWDOWN SPIKE /0600	SHOWDOWN SPIKE /2100	
E-51 T2 SKD GRIZZLY	08/01	JOSH BURDEN	2	SHOWDOWN SPIKE /0600	SHOWDOWN SPIKE /2100	
E-49 T1 FELB ANDREWS	08/01	JESSE SHERYL	2	SHOWDOWN SPIKE /0600	SHOWDOWN SPIKE /2100	
E-76 T1 FELB JOHN STITT CONTRACTING	08/04	JOHN STITT	1	SHOWDOWN SPIKE /0600	SHOWDOWN SPIKE /2100	
E-79 LOG DENBOER LOGGING	08/04	WILLIE DENBOER	2	SHOWDOWN SPIKE /0600	SHOWDOWN SPIKE /2100	
E-1 T2 WAT LEVIATHAN, INC.	08/08	TRACY SCOTT	2	SHOWDOWN SPIKE /0600	SHOWDOWN SPIKE /2100	
E-64 T2 WAT RMFS	08/01	RANDY WALKER	1	SHOWDOWN SPIKE /0600	SHOWDOWN SPIKE /2100	
O-3.65 SOF2	08/04	LARRY HOLSOMBACK	1	SHOWDOWN SPIKE /0600	SHOWDOWN SPIKE /2100	
<b>8. Division/Group Communication Summary</b>						
Function	Channel	RX Frequency N/W	RX Tone/NAC	TX Frequency N/W	TX Tone/NAC	Mode
COMMAND	6	173.8125	107.2	168.4750	107.2	A
COMMAND	7	173.0375	107.2	167.3250	107.2	A
COMMAND	8	169.8125	107.2	164.6750	107.2	A
TACTICAL	3	168.6000	107.2	168.6000	107.2	A
COMMAND	9	171.5000	107.2	164.0000	156.7	A
AIR TO GROUND	13	166.6125		166.6125		A
<b>9. Prepared By (Resource Unit Leader)</b>			<b>Approved By (Planning Section Chief)</b>		<b>Date</b>	<b>Time</b>
LAILA LIENESCH, RESL			CAROL O'BRYAN, PSC2		07/27/2021	2000

**Division/Group Assignment List (ICS 204 WF)**  
Controlled Unclassified Information//Basic

<b>1. Incident Name:</b>			<b>3.</b>			
DIVIDE COMPLEX - BALSINGER			<b>Branch:</b>		<b>Division/Group</b>	
<b>2. Operational Period:</b> DAY - NIGHT			<b>III</b>		<b>T</b>	
Date/Time From: 07/28/2021 0600	WED	Date/Time To: 07/29/2021 1000				
<b>4. Operations Personnel</b>						
<b>BRANCH DIRECTOR</b>		JOSH GRAHAM		<b>FIELD OPERATIONS CHIEF</b>		TYLER VAN ORMER BERT PLANTE (T)
<b>LEAD OPERATIONS CHIEF</b>		JEFF SCHARDT		<b>PLANNING OPERATIONS CHIEF</b>		SHAWN NAGLE KEVIN GRODI (T)
<b>DIVISION/GROUP SUPERVISOR</b>		DANNY GORE EVAN HAUGAN (T)				
<b>5. Resources Assigned this Period</b>						
Strike Team / Task Force / Resource Designator		LWD	Leader	Number Persons	Drop Off PT./Time	Pick Up PT./Time
E-55 AMBU *** ROVING			KALILOCAY WILLIE	2	SHOWDOWN SPIKE /0600	SHOWDOWN SPIKE /2100
READ - LOCAL			JASON OLTROGGE	1	SHOWDOWN SPIKE /0600	SHOWDOWN SPIKE /2100
<b>6. Control Operations/Work Assignments:</b>						
<p><b>TASK:</b> Implement tactics to keep fire West of Belt Park.  <b>PURPOSE:</b> Ensure fire activity does not get established within and East of Belt Park.  <b>END STATE:</b> Fire activity will be kept West of Belt Park.</p>						
<b>7. Special Instructions:</b>						
<p><b>Spike Camp is located at Showdown Ski Resort.</b>  Minimize impact to the Belt Creek RD.  Adhere to food storage order.</p> <p>Trigger points currently for <b>EVACUATION</b> - Tillinghast Creek, FR839, Goblin Gulch for communities to the North and East of the fire.</p> <p><b>** IN THE EVENT OF AN IWI:</b>  Contact <b>DIVIDE COMMUNICATIONS ON COMMAND</b>  <b>If unreachable, contact by phone at 201-401-6806</b></p>						
<b>8. Division/Group Communication Summary</b>						
Function	Channel	RX Frequency N/W	RX Tone/NAC	TX Frequency N/W	TX Tone/NAC	Mode
COMMAND	6	173.8125	107.2	168.4750	107.2	A
COMMAND	7	173.0375	107.2	167.3250	107.2	A
COMMAND	8	169.8125	107.2	164.6750	107.2	A
TACTICAL	3	168.6000	107.2	168.6000	107.2	A
COMMAND	9	171.5000	107.2	164.0000	156.7	A
AIR TO GROUND	13	166.6125		166.6125		A
<b>9. Prepared By (Resource Unit Leader)</b>			<b>Approved By (Planning Section Chief)</b>		<b>Date</b>	<b>Time</b>
LAILA LIENESCH, RESL			CAROL O'BRYAN, PSC2		07/27/2021	2000

**Division/Group Assignment List (ICS 204 WF)**  
**Controlled Unclassified Information//Basic**

<b>1. Incident Name:</b>				<b>3.</b>		
DIVIDE COMPLEX - BALSINGER				<b>Branch:</b>  <b>III</b>	<b>Division/Group</b>  <b>U</b>	
<b>2. Operational Period: DAY - NIGHT</b>						
Date/Time From: 07/28/2021 0600 WED		Date/Time To: 07/29/2021 1000 THU				
<b>4. Operations Personnel</b>						
<b>BRANCH DIRECTOR</b>		JOSH GRAHAM		<b>FIELD OPERATIONS CHIEF</b>		TYLER VAN ORMER BERT PLANTE (T)
<b>LEAD OPERATIONS CHIEF</b>		JEFF SCHARDT		<b>PLANNING OPERATIONS CHIEF</b>		SHAWN NAGLE KEVIN GRODI (T)
<b>DIVISION/GROUP SUPERVISOR</b>		BRIAN KEATING GABRIEL TEMPLETON (T)				
<b>5. Resources Assigned this Period</b>						
Strike Team / Task Force / Resource Designator		LWD	Leader	Number Persons	Drop Off PT./Time	Pick Up PT./Time
O-90 HEQB		07/31	EVAN KARP	1	SHOWDOWN SPIKE/0600	SHOWDOWN SPIKE/2100
HEQB (FROM E-37 HEFT)		07/31	CODY WIRTH	1	SHOWDOWN SPIKE/0600	SHOWDOWN SPIKE/2100
C-18 HC2IA JACKSON BLM		08/09	DARREN O'LOUGHLIN	21	SHOWDOWN SPIKE/0600	SHOWDOWN SPIKE/2100
O-55 SOF2		08/09	CHRIS FARINETTI	1	SHOWDOWN SPIKE/0600	SHOWDOWN SPIKE/2100
<b>6. Control Operations/Work Assignments:</b>						
<b>TASK:</b> Scout and identify direct and indirect line construction opportunities to keep fire South of Trail 336/Management Action Point (MAP) #7.						
<b>PURPOSE:</b> Minimized fire impacts to private lands and spread North of Trail 336/MAP 37.						
<b>END STATE:</b> Fire activity will be kept South of Trail 336 (MAP#7).						
<b>7. Special Instructions:</b>						
<b>** IN THE EVENT OF AN IWI:</b>						
Contact <b>DIVIDE COMMUNICATIONS</b> on <b>COMMAND</b>						
If <b>unreachable</b> , contact by phone at <b>201-401-6806</b>						
<b>8. Division/Group Communication Summary</b>						
Function	Channel	RX Frequency N/W	RX Tone/NAC	TX Frequency N/W	TX Tone/NAC	Mode
COMMAND	7	173.0375	107.2	167.3250	107.2	A
COMMAND	8	169.8125	107.2	164.6750	107.2	A
TACTICAL	5	166.7750	107.2	166.7750	107.2	A
COMMAND	6	173.8125	107.2	168.4750	107.2	A
COMMAND	9	171.5000	107.2	164.0000	156.7	A
AIR TO GROUND	13	166.6125		166.6125		A
<b>9. Prepared By (Resource Unit Leader)</b>			<b>Approved By (Planning Section Chief)</b>		<b>Date</b>	<b>Time</b>
LAILA LIENESCH, RESL			CAROL O'BRYAN, PSC2		07/27/2021	2000

**Division/Group Assignment List (ICS 204 WF)**  
**Controlled Unclassified Information//Basic**

<b>1. Incident Name:</b>		<b>3.</b>	
DIVIDE COMPLEX - BALSINGER		<b>Branch:</b>	<b>Division/Group</b>
<b>2. Operational Period:</b> DAY - NIGHT		<b>III</b>	<b>STRUCTURE</b>
Date/Time From: 07/28/2021 0600 WED	Date/Time To: 07/29/2021 1000 THU		

<b>4. Operations Personnel</b>			
<b>BRANCH DIRECTOR</b>	JOSH GRAHAM	<b>FIELD OPERATIONS CHIEF</b>	TYLER VAN ORMER BERT PLANTE (T)
<b>LEAD OPERATIONS CHIEF</b>	JEFF SCHARDT	<b>PLANNING OPERATIONS CHIEF</b>	SHAWN NAGLE KEVIN GRODI (T)
<b>DIVISION/GROUP SUPERVISOR</b>	TK KENNEDY		

<b>5. Resources Assigned this Period</b>					
Strike Team / Task Force / Resource Designator	LWD	Leader	Number Persons	Drop Off PT./Time	Pick Up PT./Time
O-16 TFLD (T)		AARON STROBLE	1	SHOWDOWN SPIKE/0600	SHOWDOWN SPIKE/2100
O-140 STEN (T)	08/07	JUSTIN HOLSOMBACK	1	SHOWDOWN SPIKE/0600	SHOWDOWN SPIKE/2100
O-31 FALM JAMISON	08/02	SEAN HICKEY	2	SHOWDOWN SPIKE/0600	SHOWDOWN SPIKE/2100
E-45 T3 ENG RMFS C-5	08/08	GLENN NUTT	3	SHOWDOWN SPIKE/0600	SHOWDOWN SPIKE/2100
E-98 T3 ENG 23	08/10	ERNESTO RENTERIA	4	SHOWDOWN SPIKE/0600	SHOWDOWN SPIKE/2100
E-99 T3 ENG	08/10		3	SHOWDOWN SPIKE/0600	SHOWDOWN SPIKE/2100
E-42 T4 ENG CASTLE MOUNTAIN	07/31	RHODINA TSOSIE	3	SHOWDOWN SPIKE/0600	SHOWDOWN SPIKE/2100
E-15 T6 ENG NORTHERN UTAH FIRE	08/07	COREY STONE	3	SHOWDOWN SPIKE/0600	SHOWDOWN SPIKE/2100
E-17 T6 ENG UTAH FIRE COMPANY	08/07	JOHN BEAL	2	SHOWDOWN SPIKE/0600	SHOWDOWN SPIKE/2100
E-16 T6 ENG EAGLE 6	08/07	DENNIS BARCUS	3	SHOWDOWN SPIKE/0600	SHOWDOWN SPIKE/2100
E-18 T6 ENG RMFS	08/07	COLE STANFORD	3	SHOWDOWN SPIKE/0600	SHOWDOWN SPIKE/2100
E-106 T1 WAT BIG SKY	08/09	MITCH HAMEL	2	SHOWDOWN SPIKE/0600	SHOWDOWN SPIKE/2100
E-103 T2 WAT CASTLE MOUNTAIN	08/09	ZACH MANNON	1	SHOWDOWN SPIKE/0600	SHOWDOWN SPIKE/2100
E-105 T2 WAT CASTLE MOUNTAIN	08/09	TIM MCGUIRE	1	SHOWDOWN SPIKE/0600	SHOWDOWN SPIKE/2100
E-44 T2 WAT	08/10		1	SHOWDOWN SPIKE/0600	SHOWDOWN SPIKE/2100

<b>8. Division/Group Communication Summary</b>						
Function	Channel	RX Frequency N/W	RX Tone/NAC	TX Frequency N/W	TX Tone/NAC	Mode
COMMAND	6	173.8125	107.2	168.4750	107.2	A
COMMAND	7	173.0375	107.2	167.3250	107.2	A
COMMAND	8	169.8125	107.2	164.6750	107.2	A
TACTICAL	4	166.7250	107.2	166.7250	107.2	A
COMMAND	9	171.5000	107.2	164.0000	156.7	A
AIR TO GROUND	13	166.6125		166.6125		A

<b>9. Prepared By (Resource Unit Leader)</b>	<b>Approved By (Planning Section Chief)</b>	<b>Date</b>	<b>Time</b>
LAILA LIENESCH, RESL	CAROL O'BRYAN, PSC2	07/27/2021	2000

**Division/Group Assignment List (ICS 204 WF)**  
Controlled Unclassified Information//Basic

<b>1. Incident Name:</b>			<b>3.</b>			
DIVIDE COMPLEX - BALSINGER			<b>Branch:</b>		<b>Division/Group</b>	
<b>2. Operational Period: DAY - NIGHT</b>			<b>III</b>		<b>STRUCTURE</b>	
Date/Time From: 07/28/2021 0600	WED	Date/Time To: 07/29/2021 1000				
<b>4. Operations Personnel</b>						
<b>BRANCH DIRECTOR</b>		JOSH GRAHAM		<b>FIELD OPERATIONS CHIEF</b>		TYLER VAN ORMER BERT PLANTE (T)
<b>LEAD OPERATIONS CHIEF</b>		JEFF SCHARDT		<b>PLANNING OPERATIONS CHIEF</b>		SHAWN NAGLE KEVIN GRODI (T)
<b>DIVISION/GROUP SUPERVISOR</b>		TK KENNEDY				
<b>5. Resources Assigned this Period</b>						
Strike Team / Task Force / Resource Designator		LWD	Leader	Number Persons	Drop Off PT./Time	Pick Up PT./Time
E-102 T2 WAT ANDERSEN		08/09	JASON HEITZ	1	SHOWDOWN SPIKE/0600	SHOWDOWN SPIKE/2100
O-55 SOF2		08/09	CHRIS FARINETTI	1	SHOWDOWN SPIKE/0600	SHOWDOWN SPIKE/2100
O-30 EMPF		07/30	JOE DECKER	1	SHOWDOWN SPIKE/0600	SHOWDOWN SPIKE/2100
<b>6. Control Operations/Work Assignments:</b>						
<p><b>TASK:</b> Continue with structure assessments and mitigation measures within Division I and Division T of the Balsinger Fire.</p> <p><b>PURPOSE:</b> Ensure any threats to structures are mitigated.</p> <p><b>END STATE:</b> Threats to structures within Division I and Division T of the Balsinger Fire will be mitigated.</p>						
<b>7. Special Instructions:</b>						
<p>Trigger points currently for <b>EVACUATION</b> - Tillinghast Creek, FR839, Goblin Gulch for communities to the North and East of the fire.</p> <p><b>** IN THE EVENT OF AN IWI:</b> Contact <b>DIVIDE COMMUNICATIONS</b> on <b>COMMAND</b> <b>If unreachable</b>, contact by phone at <b>201-401-6806</b></p>						
<b>8. Division/Group Communication Summary</b>						
Function	Channel	RX Frequency N/W	RX Tone/NAC	TX Frequency N/W	TX Tone/NAC	Mode
COMMAND	6	173.8125	107.2	168.4750	107.2	A
COMMAND	7	173.0375	107.2	167.3250	107.2	A
COMMAND	8	169.8125	107.2	164.6750	107.2	A
TACTICAL	4	166.7250	107.2	166.7250	107.2	A
COMMAND	9	171.5000	107.2	164.0000	156.7	A
AIR TO GROUND	13	166.6125		166.6125		A
<b>9. Prepared By (Resource Unit Leader)</b>		<b>Approved By (Planning Section Chief)</b>			<b>Date</b>	<b>Time</b>
LAILA LIENESCH, RESL		CAROL O'BRYAN, PSC2			07/27/2021	2000

**Division/Group Assignment List (ICS 204 WF)**  
**Controlled Unclassified Information//Basic**

<b>1. Incident Name:</b>				<b>3.</b>		
DIVIDE COMPLEX - BALSINGER				<b>Branch:</b>  <b>III</b>	<b>Division/Group</b>  <b>IA</b>	
<b>2. Operational Period:</b> DAY - NIGHT						
Date/Time From: 07/28/2021 0600 WED		Date/Time To: 07/29/2021 1000 THU				
<b>4. Operations Personnel</b>						
<b>BRANCH DIRECTOR</b> JOSH GRAHAM		<b>FIELD OPERATIONS CHIEF</b> TYLER VAN ORMER BERT PLANTE (T)				
<b>LEAD OPERATIONS CHIEF</b> JEFF SCHARDT		<b>PLANNING OPERATIONS CHIEF</b> SHAWN NAGLE KEVIN GRODI (T)				
<b>DIVISION/GROUP SUPERVISOR</b>						
<b>5. Resources Assigned this Period</b>						
Strike Team / Task Force / Resource Designator		LWD	Leader	Number Persons	Drop Off PT./Time	Pick Up PT./Time
O-80 TFLD		08/07	MIKE WILLARDSON	1	SHOWDOWN SPIKE/0600	SHOWDOWN SPIKE/2100
T2 HC MODULE BELT CREEK - LOCAL			JOE HANSON	12	SHOWDOWN SPIKE/0600	SHOWDOWN SPIKE/2100
E-75 T3 ENG CASTLE MOUNTAIN		08/03	SCOTT MCHENRY	3	SHOWDOWN SPIKE/0600	SHOWDOWN SPIKE/2100
E-38 T6 ENG LOOMIS FIRE **		08/03	TAYLOR EASLEY	3	SHOWDOWN SPIKE/0600	SHOWDOWN SPIKE/2100
E-39 T6 ENG DESERT HILLS FD		08/02	JASON SAYRE	3	SHOWDOWN SPIKE/0600	SHOWDOWN SPIKE/2100
E-74 T6 ENG DS FIRE		08/09	BILLIE SMOCK	3	SHOWDOWN SPIKE/0600	SHOWDOWN SPIKE/2100
E-110 T6 ENG MARTIN		08/09	CASEY EHLERS	3	SHOWDOWN SPIKE/0600	SHOWDOWN SPIKE/2100
T6 ENG 631 - LOCAL			BOB BUNDY	3	SHOWDOWN SPIKE/0600	SHOWDOWN SPIKE/2100
E-4 T3 WAT STERLING			DUANE TURK	1	SHOWDOWN SPIKE/0600	SHOWDOWN SPIKE/2100
O-3.51 SOF2 (T)		08/04	JEFF HENDERSON	1	SHOWDOWN SPIKE/0600	SHOWDOWN SPIKE/2100
<b>6. Control Operations/Work Assignments:</b>						
<b>TASK:</b> Serve as primary responding suppression resources to any initial attack within the Temporary Flight Restrictions (TFR) as identified in the Delegation of Authority.						
<b>PURPOSE:</b> Keep fire activity within the parameters of initial attack fires.						
<b>END STATE:</b> Fire is at least 90% contained and has not grown in size for one operational period.						
<b>7. Special Instructions:</b>						
<b>8. Division/Group Communication Summary</b>						
Function	Channel	RX Frequency N/W	RX Tone/NAC	TX Frequency N/W	TX Tone/NAC	Mode
COMMAND	6	173.8125	107.2	168.4750	107.2	A
COMMAND	7	173.0375	107.2	167.3250	107.2	A
COMMAND	8	169.8125	107.2	164.6750	107.2	A
TACTICAL	2	168.2000	107.2	168.2000	107.2	A
COMMAND	9	171.5000	107.2	164.0000	156.7	A
AIR TO GROUND	13	166.6125		166.6125		A
<b>9. Prepared By (Resource Unit Leader)</b>			<b>Approved By (Planning Section Chief)</b>		<b>Date</b>	<b>Time</b>
LAILA LIENESCH, RESL			CAROL O'BRYAN, PSC2		07/27/2021	2000

**Division/Group Assignment List (ICS 204 WF)**  
**Controlled Unclassified Information//Basic**

<b>1. Incident Name:</b>		<b>3.</b>	
DIVIDE COMPLEX - BALSINGER		<b>Branch:</b>  <b>III</b>	<b>Division/Group</b>  <b>IA</b>
<b>2. Operational Period: DAY - NIGHT</b>			
Date/Time From: 07/28/2021 0600	WED	Date/Time To: 07/29/2021 1000	THU

<b>4. Operations Personnel</b>			
<b>BRANCH DIRECTOR</b>	JOSH GRAHAM	<b>FIELD OEPRATIONS CHIEF</b>	TYLER VAN ORMER BERT PLANTE (T)
<b>LEAD OEPRATIONS CHIEF</b>	JEFF SCHARDT	<b>PLANNING OPERATIONS CHIEF</b>	SHAWN NAGLE KEVIN GRODI (T)
<b>DIVISION/GROUP SUPERVISOR</b>			

**7. Special Instructions:**

**Stage at Showdown Ski Resort**  
E-4 WAT Sterling will stage at Helibase  
\*\* E-38 ENG Loomis Fire on loan to American Fork

**\*\* IN THE EVENT OF AN IWI:**  
Contact **DIVIDE COMMUNICATIONS ON COMMAND**  
**If unreachable, contact by phone at 201-401-6806**

**8. Division/Group Communication Summary**

Function	Channel	RX Frequency N/W	RX Tone/NAC	TX Frequency N/W	TX Tone/NAC	Mode
COMMAND	6	173.8125	107.2	168.4750	107.2	A
COMMAND	7	173.0375	107.2	167.3250	107.2	A
COMMAND	8	169.8125	107.2	164.6750	107.2	A
TACTICAL	2	168.2000	107.2	168.2000	107.2	A
COMMAND	9	171.5000	107.2	164.0000	156.7	A
AIR TO GROUND	13	166.6125		166.6125		A

<b>9. Prepared By (Resource Unit Leader)</b>	<b>Approved By (Planning Section Chief)</b>	<b>Date</b>	<b>Time</b>
LAILA LIENESCH, RESL	CAROL O'BRYAN, PSC2	07/27/2021	2000

**Division/Group Assignment List (ICS 204 WF)**  
Controlled Unclassified Information//Basic

1. Incident Name:			3.			
DIVIDE COMPLEX - BALSINGER			Branch:		Division/Group	
2. Operational Period: DAY - NIGHT			<b>III</b>		<b>NIGHT</b>	
Date/Time From: 07/28/2021 0600	WED	Date/Time To: 07/29/2021 1000				
4. Operations Personnel						
BRANCH DIRECTOR		JOSH GRAHAM		FIELD OPERATIONS CHIEF		TYLER VAN ORMER BERT PLANTE (T)
LEAD OPERATIONS CHIEF		JEFF SCHARDT		PLANNING OPERATIONS CHIEF		SHAWN NAGLE KEVIN GRODI (T)
DIVISION/GROUP SUPERVISOR						
5. Resources Assigned this Period						
Strike Team / Task Force / Resource Designator		LWD	Leader	Number Persons	Drop Off PT./Time	Pick Up PT./Time
O-151 TFLD		08/09	DARIN GROFF	1	SHOWDOWN SPIKE/1800	SHOWDOWN SPIKE/1000
E-40 T6 ENG GREEN VALLEY FD		08/03	MIKE CARRAFA	3	SHOWDOWN SPIKE/1800	SHOWDOWN SPIKE/1000
E-41 T6 ENG FLAME CHASERS		08/01	EDWIN HILL	3	SHOWDOWN SPIKE/1800	SHOWDOWN SPIKE/1000
E-46 T4 ENG FMFS		07/31	SHANE STREHLE	3	SHOWDOWN SPIKE/1800	SHOWDOWN SPIKE/1000
6. Control Operations/Work Assignments:						
<p><b>TASK:</b> Monitor and implement tactics to hold containment lines during nighttime hours.  <b>PURPOSE:</b> Ensure daytime tactics implemented continue to mitigate any threats.  <b>END STATE:</b> Fire will be kept within the containment lines.</p>						
7. Special Instructions:						
<p><b>** IN THE EVENT OF AN IWI:</b>  Contact <b>DIVIDE COMMUNICATIONS ON COMMAND</b>  <b>If unreachable</b>, contact by phone at <b>201-401-6806</b></p>						
8. Division/Group Communication Summary						
Function	Channel	RX Frequency N/W	RX Tone/NAC	TX Frequency N/W	TX Tone/NAC	Mode
COMMAND	6	173.8125	107.2	168.4750	107.2	A
COMMAND	7	173.0375	107.2	167.3250	107.2	A
COMMAND	8	169.8125	107.2	164.6750	107.2	A
TACTICAL	3	168.6000	107.2	168.6000	107.2	A
COMMAND	9	171.5000	107.2	164.0000	156.7	A
AIR TO GROUND	13	166.6125		166.6125		A
9. Prepared By (Resource Unit Leader)			Approved By (Planning Section Chief)		Date	Time
LAILA LIENESCH, RESL			CAROL O'BRYAN, PSC2		07/27/2021	2000



# AIR OPERATIONS SUMMARY

Prepared By: Tim Elder

Prepared Date: 7.27.21

Prepared Time: 1800

<b>INCIDENT NAME:</b> American Fork/Divide Complex		<b>START TIME:</b> 0800	<b>END TIME:</b> 2000	<b>Sunrise:</b> 0601	<b>Sunset:</b> 2058
<b>3. REMARKS (Safety Notes, Hazards, and Air Operations Special Equipment, etc.):</b> Hazards – Poor Visibility due to smoke, anticipate general and fire a violation traffic. Use caution when utilizing non-towered airports. See and Avoid.  Helicopter requests can be made directly to the helibase via Command.		<b>MEDEVAC:</b> Short Haul – N401HQ - Josh Ingles 406-461-4433 Air Ambulance Frequency - "Tan" 155.3400 TX tone 156.7		<b>TFR #:</b> American Fork 1/1480 7nm 12,500 msl Balsinger 1/6366 7 nm 11,000 msl	

PERSONNEL	NAME	PHONE #	FREQUENCIES	AM	FM	FIXED-WING- Type/ Make-Model/ N#/ Base
AOBD	Tim Elder	863-610-0096	A/G Ellis		168.7375	AIRTANKERS – Order through Air Attack if on scene, otherwise through AOBDD.
ASGS (T)	Brian Butler	970-946-8068	A/G Balsinger - A/A TFR/FW - A/A RW	125.125 134.675	166.6125	LEAD PLANES- Available through dispatch.
HEBM	John Nobles	239-777-8455	A/G American Fork - A/A TFR/FW - A/A RW	119.100 128.250	169.1500	AERIAL SUPERVISION- N700FW (Kodiak). Relief ATGS avail on request through dispatch.
HEBM (T)	Josh Bardwell	936-546-1915				SEATS- Available through Dispatch
ATGS	Steve Little	828-778-2077				

## HELICOPTERS

FAA N#	T	Y	MAKE/ MODEL	BASE	START	AVAIL	REMARKS	FAA N#	T	Y	MAKE/ MODEL	BASE	START	AVAIL	REMARKS
N948CH	1		CH-47	7S6	0800	0900	R1 Prepo	N406RG	1		Puma	HLN	0800	0900	R1 Prepo
N353RC	2		UH-1H	7S6	0800	0900	OOS MECH	N4247V	2		58T	HLN	0800	0900	R1 Prepo
N210MA	2		Bell 210	7S6	0800	0900	R1 Prepo	N401HQ	3		AS350B3	HLN	0800	0900	Forest Ship
H-14X	3		Bell 407	7S6	0800	0900	EU								

TASK/MISSION/ ASSIGNMENT (Type/ function includes: Air Tactical, Retardant, Recon, Personnel Transport, Bucket Operations, SAR, etc.			MISSION START	FLY FROM	FLY TO
TYPE/FUNCTION	NAME OF PERSONNEL OR CARGO (if applicable) or instructions for tactical aircraft				
Recon	As Requested		As Requested		
Bucket Support / Supply Missions	As Requested		As Requested		
Personnel Transport	As Requested		As Requested		
Aerial Supervision	As Requested		As Requested		

## HEALTH AND SAFETY MESSAGE

***SAFETY*** starts with ***YOU***

We are **ALL** accountable for **SAFE** behaviors

INCIDENT: **Divide Complex/American Fork Fire** | DATE: July 28, 2021

### **Major Hazards and Risks: Fire Behavior, Thunderstorms, and Trigger Points**

**Fire Behavior:** *Don't be deceived about fire behavior. Each day, fuels are drier and the fire perimeter expands bringing it closer to work areas. Know where the main fire is and where spot fires ignite.*

**Thunderstorms/Virga:** *Thunderstorms can produce strong and erratic winds. This can change the direction of fire movement and greatly increase the intensity. LCES-Confirm lookouts, communications, escape routes and safety zones are acceptable as you move and conditions change.*

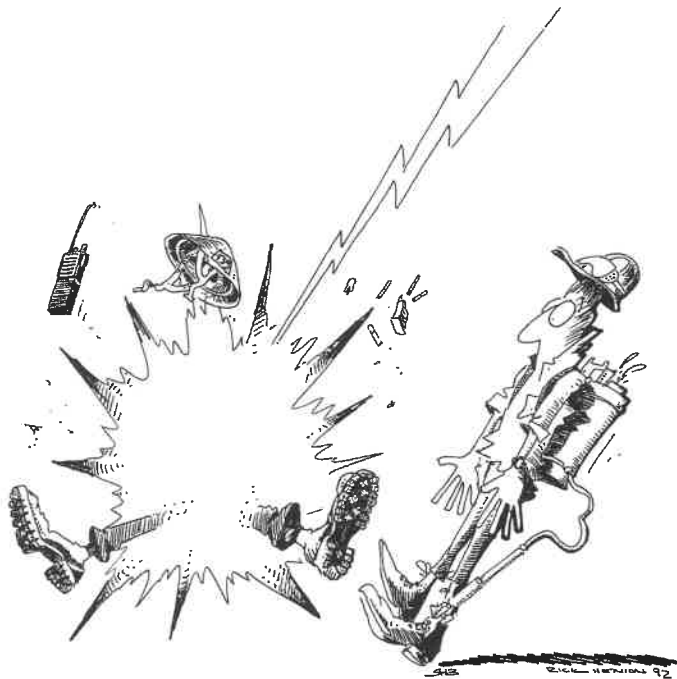
**Trigger Points:** *Establish a wind threshold for your crew to disengage from the fire line.*

### ***ESCAPE ROUTES***

- \*Evaluate escape time for rate of spread.*
- \*Leads to safe area.*
- \*Identify, flag, communicate to all.*

### ***SAFETY ZONES***

- Survival without shelter.*
- Distance from fire at least 4X flame length.*
- Large enough for all resources.*
- Identify, flag & communicate to all.*



4. UNFAMILIAR WITH WEATHER AND LOCAL FACTORS INFLUENCING FIRE BEHAVIOR

**Safety Officers:** Buddy Kelley, Paul Churchill, Jeff Henderson (T), Larry Holsomback, Shawn Duggar, and Chris Farinetti

Divide Complex / American Fork - Wednesday, July 28, 2021

8. Location	9. Hazard	6. Control or Abatement Action (Engineering, Administrative, PPE, Avoidance, Education, etc)
All	Air Operations	<ul style="list-style-type: none"> <li>~ Ensure positive communication with all air resources.</li> <li>~ Don't plan on air resources for medical transport or resupply.</li> <li>~ Follow "Aviation Watch-Out Situations" IRPG Pg 46.</li> <li>~ Refer to "Directing Bucket or Retardant Drops" IRPG Pg 58 .</li> <li>~ Refer to "Aerial Retardant Safety" IRPG Pg57.</li> <li>~ Refer to "Aircraft Mishap Response Procedure" IRPG Pg 62.</li> </ul>
All	Extreme Fire Behavior	<ul style="list-style-type: none"> <li>~ Share weather observations with all personnel assigned to division.</li> <li>~ Establish "Trigger Points" to withdraw.</li> <li>~ Use "Risk Management" process prior to engaging in suppression actions IRPG Pg 1.</li> <li>~ Refer to "Common Denominators of Fire Behavior Tragedy Fires" IRPG Pg 5.</li> <li>~ Refer to "Alignments &amp; Patterns for Dangerous Fire Behavior" IRPG Pg 73</li> </ul>
All	Fireline Hazards	<ul style="list-style-type: none"> <li>~ Refer to "Fireline Location" considerations, IRPG Pg 84</li> <li>~ Do not work directly above or below personnel during firing and mop-up operations.</li> <li>~ Watch for falling and rolling debris on steep slopes.</li> <li>~ Alert crew personnel of rolling debris by yelling to affected individuals.</li> <li>~ Position debris that could roll vertically on slope.</li> <li>~ Avoid stepping over debris that could roll by walking around object.</li> <li>~ Avoid radiant heat by wearing appropriate PPE correctly.</li> <li>~ Flag and isolate all HAZMAT and alert all personnel working in Division.</li> <li>~ Follow WUI recommendations, IRPG Pg 12.</li> </ul>
All	Heat Related Illness (HRI)& Dehydration	<ul style="list-style-type: none"> <li>~ Refer to Heat Related Illness information, IRPG Pg 109</li> <li>~ Drink Fluids throughout operational period (6-8 qts/shift).</li> <li>~ Maintain water/electrolyte ratio of 3 to 1.</li> <li>~ Carry extra water on line and cache water at drop points.</li> <li>~ Take Frequent breaks, minimum of 10 minutes every hour.</li> <li>~ Allow out of area resources time to acclimatize before expecting peak performance.</li> </ul>
All	Hazard Trees	<ul style="list-style-type: none"> <li>~ Follow "Hazard Tree Safety" guidelines, IRPG page 22.</li> <li>~ Post lookouts, or use a spotter in mop-up areas with personnel.</li> <li>~ Don't park vehicles or take breaks in high concentrations of hazard trees.</li> <li>~ Establish trigger points for disengagement during high wind events.</li> <li>~ Remember that the hazard zone extends a minimum of 2 1/2 tree heights.</li> </ul>
All	Mop-up & Suppression Repair	<ul style="list-style-type: none"> <li>~ Do not work above or below personnel during rehab/mop-up operations.</li> <li>~ Alert crew personnel of rolling debris by yelling to affected individuals.</li> <li>~ Position debris that could roll vertically on slope.</li> <li>~ Wear eye protection.</li> </ul>

Divide Complex / American Fork - Wednesday, July 28, 2021

All	Chain Saw Operations	<ul style="list-style-type: none"> <li>~ Follow "Hazard Tree Safety" guidelines, IRPG Pg 22</li> <li>~ Follow "Procedural Felling Operations" IRPG Pg 85.</li> <li>~ Look up, Look down, Look around for hazard tree indicators.</li> <li>~ Only fell and buck trees within your expertise, and training.</li> <li>~ Do not fall trees during high wind events.</li> <li>~ Ensure proper use of all required PPE.</li> </ul>
All	Heavy Equipment Operations	<ul style="list-style-type: none"> <li>~ Refer to "Working with Heavy Equipment" IRPG Pg 86~ Ensure communications are established with operators.</li> <li>~ Use hand signals if other communications are unavailable.</li> <li>~ Maintain a 300 feet exclusion area around equipment and increase it to 1 1/2 times tree height when in timber.</li> <li>~ Use a spotter when backing.</li> <li>~ Avoid working below heavy equipment.</li> <li>~ <b>Brush Chippers : Ensure that Job Hazard Analysis are reviewed and signed by all crew members working with or around them.</b></li> </ul>
All	Structure Protection & HAZMAT	<ul style="list-style-type: none"> <li>~ Review "Wildland Urban Interface Firefighting" considerations, IRPG Pg 12-16</li> <li>~ Use "Structure Assessment" checklist, IRPG Pg 13</li> <li>~ Refer to "Structure Hazard Marking System" IRPG Pg 41</li> <li>~ Follow "HAZMAT Incident Operations" IRPG Pg 36</li> </ul>
All	Driving & Traffic	<ul style="list-style-type: none"> <li>~ Practice "Defensive Driving" techniques traveling on all roads and city streets.</li> <li>~ Use spotters when backing.</li> <li>~ Always use headlights.</li> <li>~ Yield to pedestrians, wildlife and livestock.</li> <li>~ Observe posted speed limits.</li> <li>~ Use the 3 second rule for following distance when driving.</li> <li>~ Use chock blocks, turn wheels into hill.</li> <li>~ Avoid distractions (eating, cell phones, radio).</li> <li>~ Ensure that windshields are kept clean of dust and bugs.</li> </ul>
All	Spike Camp	<ul style="list-style-type: none"> <li>~ Keep a clean camp.</li> <li>~ Ensure communications are in place.</li> <li>~ Review and observe "Line Spike" considerations, IRPG Pg. 95</li> </ul>
All	Communications	<ul style="list-style-type: none"> <li>~ Maintain communication with aviation resources, and suppression organization.</li> <li>~ Ensure all know frequency and protocol for contacting resources.</li> <li>~ Utilize the ICS 205.</li> <li>~ Utilize human repeaters when working in dead spots.</li> </ul>
All	Wildlife & Livestock	<ul style="list-style-type: none"> <li>~ Watch out for wildlife &amp; livestock inside fire area and along roadways.</li> <li>~ Clean up all food and trash during each operational period. ~</li> <li>~ Store all food in bear proof containers or in vehicles.</li> <li>~ Slowly back away from any wildlife that you encounter.</li> </ul>
Branch III	Night Operations	<ul style="list-style-type: none"> <li>~ Maintain high visibility in work area and wear vest while in roadway.</li> <li>~ Use glow sticks to mark hazards.</li> <li>~ Ensure personnel have a personal light (headlamp).</li> <li>~ Watch for signs of fatigue.</li> <li>~ Take breaks away from areas of known hazard.</li> </ul>

# COVID Mitigations and Screening Tool



## **Maintain Situational Awareness of The Fire Environment: 10 & 18, LCES**

- Monitor each other, watch for symptoms (Firefighter Health Screening Tool).
- Never share PPE, UTV & flight helmets, radios, or other equipment
- Implement daily decontamination procedures of apparatus and equipment
- Adjust operational periods to allow for additional COVID-19 logistics.
- Plan for overnight lodging/camping/feeding scenarios that maintain separation from other fire personnel and community

## **WILDLAND FIRE COVID-19 SCREENING TOOL**

---

Today or in the past 24 hours, have you had any of the following symptoms<sup>1</sup>?

Symptom
Cough more than expected?
Shortness of breath or difficulty breathing?
Fever? Chills?
Muscle pain, outside your normal for firefighting?
Sore throat?
New loss of taste or smell?
Fatigue, outside your normal for firefighting?
Headache, outside your normal for firefighting?
Congestion or runny nose, outside your normal for firefighting?
Nausea or vomiting
Diarrhea
<i>* Take temperature with no-touch thermometer, if available *</i>

## MEDICAL PLAN (ICS 206 WF)

<b>Incident/Project Name</b>	<b>I. Operational Period</b>
<b>Divide Complex/American Fork</b>	<b>Day Shift / Night Shift</b> <b>July 28, 2021 1800 - July 29, 2021 1000</b>

<b>2. Ambulance Services</b>			
Name	Complete Address	Phone & EMS Frequency	Advanced Life Support (ALS) Yes      No
Meagher County Volunteer Ambulance	White Sulphur Springs, MT	406-547-3397 or 911	No
Belt Ambulance (Balsinger Fire Response Area)	Belt, MT	911	No

<b>3. Air Ambulance Services</b>		
Name	Phone	Type of Aircraft & Capability
Mercy Flight (Rotor & Fixed Wing)	800-972-4000	Air Ambulance, NVG Capable. (Use TAN Channel 15 155.3400 for contact with helicopter) For Fixed Wing Transports -Ambo will transport to White Sulphur Springs Airport
Life Flight Network	800-232-0911	Air Ambulance, NVG Capable. (Use TAN Channel 15 155.3400 for contact with helicopter)
Two Bear Rotor	406-758-5610	Rotor- Bell 429 Hoist Capable- NVG Capable. Must be ordered as Medical Transport

<b>4. Hospitals</b>								
Name Complete Address	GPS Datum – WGS 84 Coordinate Standard Degrees Decimal Minutes DD° MM.MMM' N - Lat DD° MM.MMM' W - Long		Travel Time		Phone	Helipad Yes    No		Level of Care Facility
	Lat:	Long:	Air	Gnd		Yes	No	
Mtn View Medical Center 16 West Main White Sulphur Springs, MT	N 46° 32.870	W 110° 54.396	10 Min	40 Min	406-547-3321	X		Stabilize & Transfer
St Peters Health 2475 E Broadway St Helena, MT	N 46° 34.939	W 111° 59.764	20 Min	60 Min	406-442-2480	X		Area Trauma Center
Benefis Health System 1101 26 <sup>th</sup> St S Great Falls, MT	N 47° 29.510	W 111° 15.588	30 Min	120 Min	406-543-7271	X		Level 2 Trauma Center
Univ. Of Utah Health 50 N Medical Dr. Salt Lake City, UT	N 40° 46.361	W 111° 50.240	90+ Min	NA	801-581-2700	X		Designated Burn Center

<b>5. Division   Branch   Group</b>	<b>Area Location Capability</b>		
<b>DIVISION I Balsinger</b>	<b>EMS Responders &amp; Capability:</b>	EMTF Emma Kashian (Alpha) EMPF K. Willie, EMTF A. MacArthur	
	<b>Equipment Available on Scene:</b>	4x4 Vehicle BLS Kit, 4x4 ALS Ambulance – roving to DIV T	
	<b>Medical Emergency Channel:</b>	Contact Divide Communications on Command or by phone 201-401-6806	
	<b>ETA for Ambulance to Scene:</b>		
	<b>Air:</b>	25-60 Minutes Including Spin Up Time	
	<b>Ground:</b>	30 Minutes to Spike 80 Minutes to Fire	
	<b>Approved Helispot:</b>	H1	
	<b>Lat:</b>	46.51.497	
<b>Long:</b>	110.40.703		

<b>DIVISION T Balsinger</b>	<b>EMS Responders &amp; Capability</b>		
<b>DIVISION T Balsinger</b>	<b>EMS Responders &amp; Capability:</b>	EMPF K Willie & EMTF A MacArthur AMBO 1	
	<b>Equipment Available on Scene:</b>	4x4 ALS Ambulance – roving to DIV I	
	<b>Medical Emergency Channel:</b>	Contact Divide Communications on Command or by phone 201-401-6806	
	<b>ETA for Ambulance to Scene:</b>		
	<b>Air:</b>	25-60 Minutes Including Spin Up Time	
	<b>Ground:</b>	30 Minutes to Spike 80 Minutes to Fire	
	<b>Approved Helispot:</b>		
	<b>Lat:</b>		
<b>Long:</b>			

## MEDICAL PLAN (ICS 206 WF)

<b>DIVISION E/Q Ellis</b>	EMS Responders & Capability		
	Equipment Available on Scene:		
	Medical Emergency Channel:	Contact Divide Communications on Command or by phone 201-401-6806	
	ETA for Ambulance to Scene:		
	Air:		
	Ground:		
	Approved Helispot:		
	Lat:		
Long:			
<b>DIVISION A American Fork</b>	EMS Responders & Capability	EMTF Gabriel Mizrahi , EMTF Wendy Conway	
	Equipment Available on Scene:	BLS 4x4 vehicle, 2 – BLS Kits	
	Medical Emergency Channel:	Contact Divide Communications on Command or by phone 201-401-6806	
	ETA for Ambulance to Scene:		
	Air:	25-60 Minutes Including Spin Up Time	
	Ground:	30-60 Min dependent on location	
	Approved Helispot:		
	Lat:	46.14.690	
Long:	110.10.650		
<b>Division M American Fork</b>	EMS Responders & Capability		
	Equipment Available on Scene:		
	Medical Emergency Channel:	Contact Divide Communications on Command or by phone 201-401-6806	
	ETA for Ambulance to Scene:		
	Air:		
	Ground:		
	Approved Helispot:		
	Lat:		
Long:			
<b>ICP</b>	EMS Responders & Capability	Sherri McDougal MEDL(t)	
	Equipment Available on Scene:	100 Man Kit	
	Medical Emergency Channel:		
	ETA for Ambulance to Scene:		
	Air:	25-60 Minutes Including Spin Up Time	
	Ground:	5-25 Min dependent on volunteer staffing	
	Approved Helispot:		
	Lat:		
Long:			
6. Prepared By (Medical Unit Leader)		7. Date/Time	8. Reviewed By (Safety Officer)
Sherri McDougal, MEDL (t)		07/27/21 1700	ISI Jeff Henderson 7/27/21

**American Fork AND Divide Complex Overnight Medical Incidents – contact DIVIDE COMMUNICATIONS on COMMAND, or if unreachable, contact by phone 201-401-6806.**

**Balsinger will be using Belt Ambulance as fire is in Cascade County). Complete Medical Incident Report (8 line) per process with responding dispatch center.**

# INCIDENT RADIO COMMUNICATIONS PLAN (ICS 205)

Controlled Unclassified Information//Basic

1. Incident Name:		2. Date/Time Prepared:		3. Operational Period:						
American Fork		Date: 07/27/2021 Time: 1930	Date/Time From: 07/29/2021 0600	THU	Date/Time To: 07/29/2021 0600					
<b>4. Basic Radio Channel Use:</b>										
Zone Group	Ch #	Function	Channel Name/Trunked Radio System Talkgroup	Assignment	RX Freq	RX Tone/NAC	TX Freq	TX Tone/NAC	Mode (A,D, or M)	Remarks
2	1	CMD	CMD 4		169.7500	107.2	167.1000	107.2	A	
2	2	CMD	SUNLIGHT		171.5000		164.0000	107.2	A	
2	3	Tactical	RED		154.0700		154.0700	131.8	A	
2	4	Tactical	COMMON USE 1	DIV M	166.6125		166.6125	156.7	A	
2	5	Tactical	COMMON USE 2	DIV P	163.7125		163.7125	146.2	A	
2	6	Tactical	LCNF TAC	DIV A	166.9875		166.9875	114.8	A	
2	7	Tactical	YELLOW		151.2200		151.2200	110.9	A	
2	8	Tactical	HFDIR		171.1375		171.1375	107.2	A	
2	9	Tactical	MGHR FIRE 1		154.4000		154.4000	100.0	A	
2	10	RPT	CASCADE LAW		154.7700		155.5800	151.4	A	
2	11	Tactical	MEAGHER DES S		155.0250		155.0250	107.2	A	
2	12	Tactical	MGHR DES RPTR		155.0250		158.7750	107.2	A	
2	13	Air Ground	NIFC A/G		169.1500		169.1500		A	NIFC Air to Ground
2	14	Air Ground	A/G 52		166.3875		166.3875		A	Local Air to Ground
2	15	Mediac	Tan		155.3400		155.3400	156.7	A	Air Ambulance
2	16	AIR GUARD	AIR GUARD		166.6250		166.6250	110.9	A	
5. Special Instructions: Use Human Repeater When Necessary. All Medical calls use Command 4/Channel 1 to Divide Communications to initiate IWI.										
6. Prepared By		(Communications Unit Leader)		Name: SHANNON HERRING						
ICS 205		IAP Page		Signature:						
				Date/Time: 07/27/21 1930						



# INCIDENT RADIO COMMUNICATIONS PLAN (ICS 205)

## Controlled Unclassified Information//Basic

1. Incident Name:		2. Date/Time Prepared:		3. Operational Period:						
Divide Complex		Date:	07/27/2021	Date/Time From:	07/28/2021 0600					
4. Basic Radio Channel Use:		Time:	1930	Date/Time To:	07/29/2021 0600					
		THU								
Zone Group	Ch #	Function	Channel Name/Trunked Radio System Talkgroup	Assignment	RX Freq	RX Tone/NAC	TX Freq	TX Tone/NAC	Mode (A,D, or M)	Remarks
1	1	Tactical	Tac 1	Div I "Balsinger"	168.0500	107.2	168.0500	107.2	A	Division India "Balsinger"
1	2	Tactical	Tac 2	IA	168.2000	107.2	168.2000	107.2	A	Initial Attack
1	3	Tactical	Tac 3	Div I "Balsinger"	168.6000	107.2	168.6000	107.2	A	Division Tango "Balsinger"
1	4	Tactical	Tac 4	Structure "Balsinger"	166.7250	107.2	166.7250	107.2	A	Structure Division "Balsinger"
1	5	Tactical	Tac 5	Div E/O "Ellis"	166.7750	107.2	166.7750	107.2	A	Division Echo/Quebec "Ellis"
1	6	Command	CMD1	Div U "Balsinger"	173.8125	107.2	168.4750	107.2	A	Division Uniform "Balsinger"
1	7	Command	CMD2	All Division	173.0375	107.2	167.3250	107.2	A	Air Ops for "Balsinger" & "Ellis"
1	8	Command	CMD3	All Division	169.8125	107.2	167.3250	107.2	A	Prophyy L.O. Showdown
1	9	Command	Big Bald	All Division	171.5000	107.2	164.6750	107.2	A	Big Baldy Mtn
1	10	Command	Monument	All Division	171.5000	107.2	164.0000	103.5	A	Monument Mtn
1	11	Tactical	Yellow		151.2200		151.2200		A	USFS Dispatch Big Baldy "Balsinger"
1	12	Tactical	Red		154.0700		154.0700		A	USFS Dispatch Monument
1	13	Air Ground	A/G PRI		166.6125		166.6125		A	BALSINGER A/G
1	14	Air Ground	A/G SEC		168.7375		168.7375		A	ELLIS A/G
1	15	Medivac	Tan		155.3400		155.3400	156.7	A	Air Ambulance
1	16	AIR GUARD	AIR GUARD		168.6250		168.6250	110.9	A	
5. Special Instructions: Use Human Repeater When Necessary. All Medical calls through Command Repeaters to Divide Communication to Initial an IWI Communications Cell - 201-401-6806										
6. Prepared By (Communications Unit Leader)										
				Name: SHANNON HERRING		Signature:				
ICS 205				IAP Page		Date/Time: 07/27/21		1930		

Controlled Unclassified Information//Basic DRAFT

# Weed Wash



## Mandatory when:

- Checking in
- Moving between fires
- Demob

Located 1.3 miles west of US 89 on Luppold Rd (AKA Cemetery Rd).

# Finance

Send your CTRs and Shift Tickets to the email below that correlates with the fire on your resource order, even if you are working on different fire.

[2021.divide.finance@firenet.gov](mailto:2021.divide.finance@firenet.gov)

[2021.americanfork.finance@firenet.gov](mailto:2021.americanfork.finance@firenet.gov)

CTRs/Shift Ticket – Please document what fire and division you are working on in the comment section of each CTR or Shift Ticket. This will help us with cost share information on the fire.

Document reason for Hazardous Pay on CTR.

Last working day – please contact finance via email two days prior to your demob day.

If you are an AD please send your casual hire form to the correct email address above. Use the email address that corresponds to the fire on your resource order.

# Finance Remote Processing Procedures

To the right is access to electronic Finance forms. You can access them via the QR code or the URL. On each form are four buttons PRINT, RESET, SAVE and EMAIL. You can complete these forms on your cell phone, tablet or laptop. They are Adobe PDF forms so you will need a PDF reader app on your device. The forms were created on a laptop so the commands in your cell phone and tablet do not allow for the Save and Print functions to work. You will need to use your app's functionality to Save or Print.

Once you have completed the appropriate form for your resource please email to your supervisor for approval.

Supervisors can use their app to apply a signature or just type /s/ your name on the approval line. After approving please email the approved form back to the resource for their record and to the correct finance email:

[2021.americanfork.finance@firenet.gov](mailto:2021.americanfork.finance@firenet.gov)

[2021.divide.finance@firenet.gov](mailto:2021.divide.finance@firenet.gov)

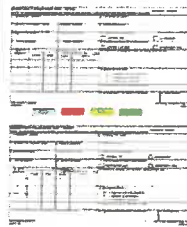
Resources: Please send photos or electronic copies of Casual hire forms, contracts, Cooperative agreements, Vehicle inspection, Manifests and resource orders to the correct finance email:

[2021.americanfork.finance@firenet.gov](mailto:2021.americanfork.finance@firenet.gov)

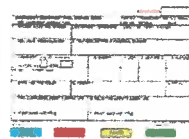
[2021.divide.finance@firenet.gov](mailto:2021.divide.finance@firenet.gov)



Crew Time Report



Shift Ticket



Emergency Fuel and Oil Ticket



General Message



## Human Resource Message

The mission of the Gold Team is to safely, effectively and efficiently manage the Divide Complex and American Fork Fire by maintaining a team of skilled and productive personnel. During this incident we will strive to successfully complete our mission and achieve our objectives while creating a positive, drug and alcohol free work environment for all assigned incident personnel. Consumption of drugs that alter decision making abilities, such as marijuana and alcohol, is prohibited while assigned to the incident.

The Gold Team fully supports EEO and will not tolerate sexual harassment or any form of discrimination!

All inappropriate behavior will be dealt with promptly. Disciplinary action and reporting back to an individual's home unit will be initiated as necessary.

Please report any incidents of inappropriate behavior to your supervisor, Marty Bentley or myself immediately.

*Deborah Beard*, Incident Commander



## TRAINING MESSAGE

**As of 27th e-ISuite show that there are 43 TRAINEES ordered to this Incident.  
However, 27 only have checked in with the Incident Training Specialist**

**Check-in** – If you have a position task book (PTB), please scan the QR code or click the link below to initiate the check-in process with the Incident Training Specialist. Please complete the form in its entirety. Upon completion, at your earliest convenience, **please email a copy of your qualification card and position task book cover to Al Hoke at [ahoke@gfc.state.ga.us](mailto:ahoke@gfc.state.ga.us).**

For your convenience, an electronic ICS-225 or ICS-226 and Evaluation Record will be sent to you after you complete the check-in process. Electronic Evaluation Records, Trainee Data Forms can also be provided.



<https://forms.office.com/g/25cqnByg71>

**Demob** – In order to receive credit for your assignment, you must close out with the Incident Training Specialist prior to departure.





## Southern Area Incident Management Gold Team Fire Information

[Divide Complex-Balsinger Fire Information - InciWeb the Incident Information System \(nwcg.gov\)](#)

[Divide Complex-Ellis Fire Information - InciWeb the Incident Information System \(nwcg.gov\)](#)

[American Fork Fire Information - InciWeb the Incident Information System \(nwcg.gov\)](#)

[Helena-Lewis and Clark National Forest - Home | Facebook](#)

[Custer Gallatin National Forest - Home | Facebook](#)

[Helena-Lewis and Clark National Forest - Home \(usda.gov\)](#)

[Custer Gallatin National Forest - Home \(usda.gov\)](#)

Fire Information Line: **406-272-6349** (8 a.m. – 8 p.m.)

**Help us tell our story by submitting photos and videos of life on the fireline.**

We need your help to capture the shots that show what we're doing and how we're doing it. Please scan the code below to submit. Adding your name and location of the photo is ideal. Any extra information is appreciated, but not mandatory.

**We are guests in this area.** Be aware that photos posted to personnel accounts may contain sensitive information. Send all photos through Information Officer to ensure they are appropriate and represent the Gold Team and our partners well. Personal protective equipment is required in any photos that will be utilized to tell the story of the fire.

American Fork



Divide Complex



**SUBMIT YOUR PHOTOS & VIDEOS**

# Tentative DEMOB List

## Divide Complex and American Fork

INCIDENT NAME	DEMOB DATE	REQ #	RESOURCE NAME	KIND	TRV	CITY	STATE
DIVIDE COMPLEX	07/28/2021	C-5	OREGON WOODS, INC.	HC2	POV	EUGENE	OR
DIVIDE COMPLEX	07/28/2021	E-9	BISHOP, MERVIN	ENG6	POV	MALTA	MT
DIVIDE COMPLEX	07/28/2021	E-14	CONIFER LOGGING INC	DOZ2	POV	LINCOLN	MT
DIVIDE COMPLEX	07/28/2021	E-26	NICK BROWN WILDLAND,	ENG6	POV	GREAT FALLS	MT
DIVIDE COMPLEX	07/28/2021	O-16	STROBEL, AARON	TFLD	AIR	LEXINGTON	KY
DIVIDE COMPLEX	07/28/2021	O-17	O'NEAL, JASON LEE	TFLD	AR	SANFORD	NC
DIVIDE COMPLEX	07/28/2021	O-20	CORBIN, TYLER	HEQB	AOV	DOLOCES	CO
AMERICAN FORK	07/28/2021	O-33	MOTTICE, CORY LOGAN	IMET	AOV	GLASGOW	MT
AMERICAN FORK	07/30/2021	E-23	IL-SHF - E-621	ENG6	AOV	MURPHYSBORO	IL
DIVIDE COMPLEX	07/30/2021	O-71	FOSNESS, ELDO LUKE	TFLD	AOV	RED LODGE	MT
DIVIDE COMPLEX	07/31/2021	E-27	OSTBERG FIRE SERVI	POT2	POV	BONNER	MT
DIVIDE COMPLEX	07/31/2021	E-28	GR. W. THOMAS PETERS	GWT4	POV	WHITEHALL	MT
DIVIDE COMPLEX	07/31/2021	E-43	BOSKET'S PLUMB. AND EXC	ENG4	POV	KALISPELL	MT
DIVIDE COMPLEX	07/31/2021	E-44	GIST ENGINE	ENG4	POV	CASCADE	MT
DIVIDE COMPLEX	07/31/2021	E-61	WEED W. DULANEY LLC	WEED	POV	HELENA	MT
DIVIDE COMPLEX	07/31/2021	O-30	BEST PRACTICE MED. LLC	EMPF	POV	BILLINGS	MT
DIVIDE COMPLEX	07/31/2021	O-37	KASHIAN, EMMA	EMTF	POV	HAMILTON	MT
AMERICAN FORK	07/31/2021	O-53	BYRD, ROCK MCINTYRE	TFLD	AOV	HARLOWTON	MT
DIVIDE COMPLEX	07/31/2021	O-77	MARKHAM, TODD JAMES	TFLD	AR	MARKETT	MI
DIVIDE COMPLEX	07/31/2021	O-80	SCOTT-WILLARDSON, MICHAEL ALLEN	DIVS			
DIVIDE COMPLEX	07/31/2021	S-24	MOBILE FOOD SERVICE	CTR		CODY	WY
DIVIDE COMPLEX	08/01/2021	C-8	BLUE MOUNTAIN CONT	HC2	POV	BENTON CITY	WA
DIVIDE COMPLEX	08/01/2021	E-22	AUSTIN LOGGING	SKD3	POV	WOLF CREEK	MT
DIVIDE COMPLEX	08/01/2021	E-35	PEANUT PIE ENTERPRISES	ENG6	POV	BASIN	MT
DIVIDE COMPLEX	08/01/2021	E-37	HE TASK. FOR. KING MTN	MISC	POV	HELENA	MT
DIVIDE COMPLEX	08/01/2021	E-42	BAKKEN, BRANDON	ENG4	POV	TOWNSEND	MT
DIVIDE COMPLEX	08/01/2021	E-47	BAKKEN, BRANDON	ENG4	POV	TOWNSEND	MT
DIVIDE COMPLEX	08/01/2021	E-49	SHERRILL, WAYNE	FEL1	POV	LINCOLN	MT
DIVIDE COMPLEX	08/01/2021	E-51	MISC - SKIDDER, T2	SKD2	AOV	KALISPELL	MT
DIVIDE COMPLEX	08/01/2021	E-52	MISC - SKIDDER, T2	SKD2	POV	KALISPELL	MT
DIVIDE COMPLEX	08/01/2021	E-55	AMBULANCE, T2	AMBU	POV	HAMILTON	MT
DIVIDE COMPLEX	08/01/2021	E-60	FRONT LINE EMS LLC	RES	POV	VALE	CO
AMERICAN FORK	08/01/2021	O-63	GONZALES, RACHAEL	PIOF	REN	FORT COLLINS	CO
DIVIDE COMPLEX	08/01/2021	O-79	KEATING, BRIAN	DIVS	AOV	DENVER	CO
DIVIDE COMPLEX	08/01/2021	O-90	KARP, EVAN ELLIOT	HEQB			

**IF YOU ARE FLYING YOU MUST CONTACT DEMOB AT LEAST 3 DAYS BEFORE YOUR DEMOB DATE TO GET A FLIGHT.**

On your demob day, or last work day, personnel should:

1. Turn in all supplies, radios and computer equipment checked out from the incident.
2. They should ensure that all Unit Logs and evaluations are submitted to Documentation electronically. [2021.americanfork.docs@firenet.gov](mailto:2021.americanfork.docs@firenet.gov)
3. Go to the Ground Support Unit for equipment inspections.
4. Go through weed wash and obtain a receipt to verify that the equipment has been cleaned. Return that receipt to demob (this can be done virtually if necessary by emailing a picture of the receipt to: [2021.americanfork.demob@firenet.gov](mailto:2021.americanfork.demob@firenet.gov)).
5. Go to the Time Unit to complete time and review their final OF-288 or OF-286. This may be done virtually if necessary.
6. Report back to the Demobilization Unit to verify travel information home, including ETD/ETA and RON locations. This can be done virtually if necessary.

Call Jeff DeMatteis, DMOB at 937-506-6181 if you have questions.



# Documentation Documentation Documentation

**Don't forget to submit your documentation to Plans!**

For those in the field you can scan or take a picture and email it to the plans section - American Fork at [2021.americanfork.docs@firenet.gov](mailto:2021.americanfork.docs@firenet.gov) or Divide at [2021.divide.docs@firenet.gov](mailto:2021.divide.docs@firenet.gov)

For those with access to America Fork or Divide Teams submit your documents in the correct General Channel>Files>DOCUMENT Inbox

**Make sure you use the NEW Electronic File Naming Convention.  
File Naming Convention Format**

Standard for all Section/Unit files

{DocType}\_{DocVersion}\_{Date}\_{IncidentNumber}

**EXAMPLE – 214\_BearSmokey\_20210727\_005087**

## **File Naming Components**

DocType is the title of the document or the ICS form number (examples: Public Meeting Events; 296).

DocVersion identifies individual files with the same doc type and date or a file that necessitates a name ID. *Not all electronic files will need a DocVersion*

(examples: Resource Name; Aircraft Tail number; Resource Order number; Time).

Date is entered as YYYYMMDD – Y=year; M=month; D=day (example: 20210704 represents the date July 4, 2021).

IncidentNumber is the six-digit incident number 000NNN – N=numeral (example: 000363 represents the incident number RM-SJF-000363).

# Divide Complex American Fork Fires

## IAP Map

MT-HLF-5079

Approx. 19,036 GIS acres 7/26 @ 2115

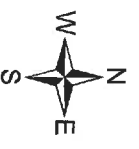
Operational Shift:  
7/28/2021



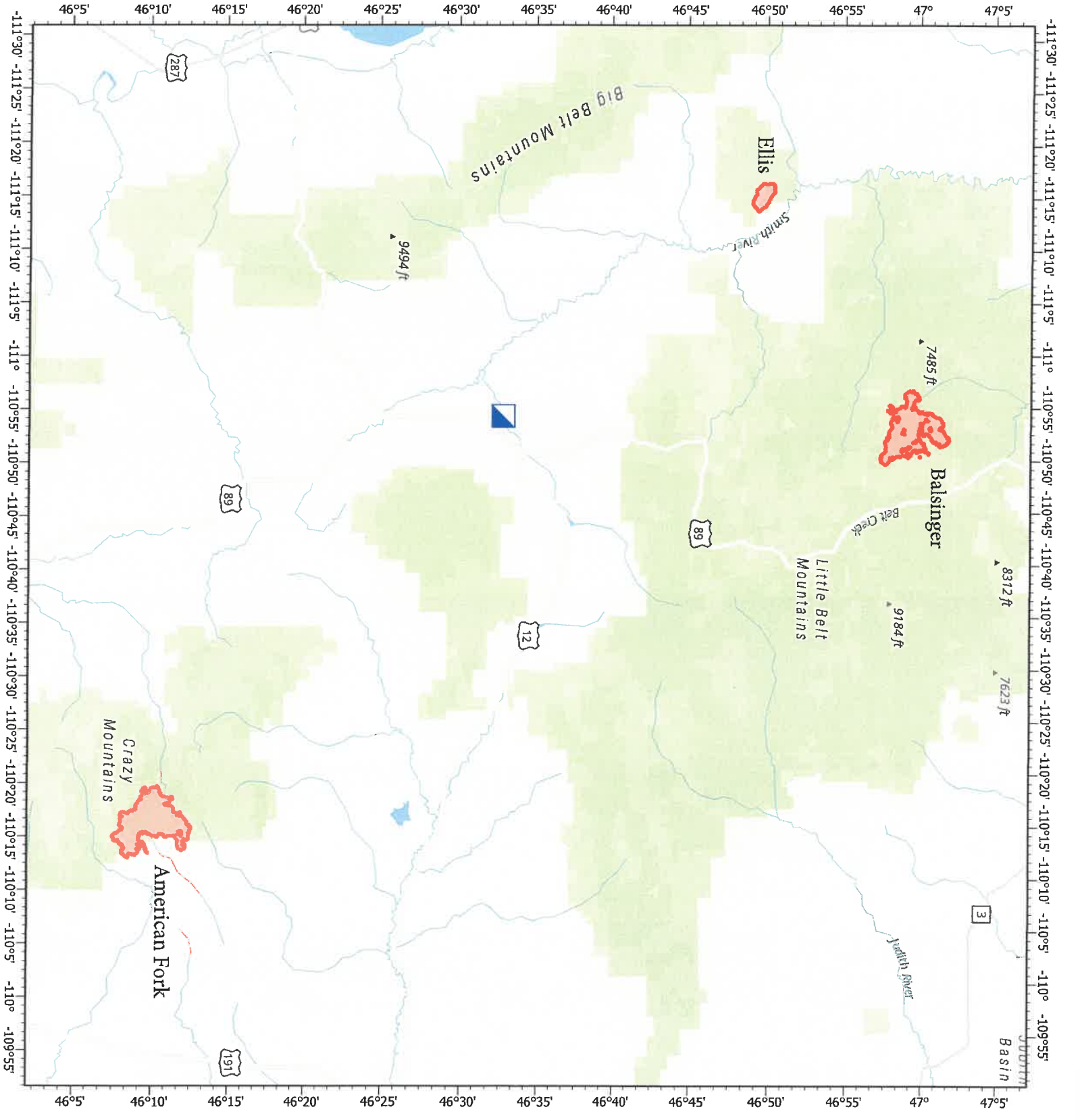
Incident Command Post



Wildfire Daily Fire Perimeter



Created by: SA Gold Team  
Date Exported: 7/27/2021 5:56 PM



**PHONE LIST - GOLD TEAM - 07282021**

<b>Position</b>	<b>Name</b>	<b>Phone Number</b>	<b>Position</b>	<b>Name</b>	<b>Phone Number</b>
<b>COMMAND</b>					
IC12	Debbie Beard	850-524-9966	COST	Marlene Hudson	850-570-5478
IC12 (t)	Michael Cheek	828-231-2691	COMP	Terri McDonald	352-454-5385
DPIC	Marty Bentley	423-584-1682			
LOFR	Michael Wright	970-819-2890	<b>PLANNING</b>		
LOFR (t)	Bobby Claybrook	859-490-0663	PSC2	Carol O'Bryan	903-263-8704
LOFR (t)	Jeffrey Gardner	706-260-6296	PSC2	Thomas Barrett	478-560-6372
Covid	Bradley Cooper	318-451-5074	PSC2 (t)	Jessica Hollingsworth	601-966-0331
PIO2	Michelle Burnett	803-920-6167	RESL	Kelly Russell	850-294-8400
PIO2	Andrew Gray	850-797-4824	RESL	Melonie Sellers	601-508-8997
PIO2 (t)	Brook Smith	865-603-5217	RESL (t)	Laila Lienesch	541-760-1484
PIO2 (t)	Tricia Boles	606-627-5398	SCKN (t)	Jocelyn Howell	214-934-0138
PIO2 (t)	Cathryn Dowd	828-412-1521	SITL	Paula Hensley	606-275-2140
PIO2 (t)	Rav Butler	865-250-8980	ITSS	Christopher Evans	928-273-4203
PIO2 (t)	Emily Cleaver	270-350-8103	ITSS	Rusty Brown	478-973-6231
PIO2 (t)	Jason Lawor	850-510-4095	ITSS	Kevin Curry	732-684-2999
PIO2 (t)	Rachel Gonzales	970-566-3880	IME T	Cory Mottice	330-703-7545
SOF2	Paul Churchill	843-259-9884	FBAN	Kelly Cagle	336-302-0343
SOF2	Richard Kelley	850-447-1344	DEMOB	Jeff DeMattais	601-415-9080
SOF2	Larry Holsomback	706-280-4716	TNSP	Al Hoke	678-232-7107
SOF2 (t)	Jeffrey Henderson	479-518-3162			
			<b>LOGISTICS</b>		
<b>OPERATIONS</b>			LSC2	David McVay	850-381-1669
OSC2	Jeff Schardt	706-280-5498	LSC2	James Copple	620-899-1135
OSC2	Tyler Van Ormer	540-236-8478	LSC2	James Aldridge	919-636-2471
OSC2	Shawn Nagle	662-231-4024	SUPL	Lemuel Cooksey	850-508-9097
OSC2	Loy Elam	336-467-7254	COMIL	George Rosenthal	936-707-1832
OSC2	Josh Graham	501-545-3088	COMIL (t)	Shannon Herring	470-201-9582
OSC2	Bert Plante	732-904-5935	ODRM- American	Sherri Kite	850-209-2150
OSC2 (t)	Kevin Grodi	321-408-2728	ODRM- Divide	Leigh Ostin	352-445-1366
DIVS	Greg Salansky	865-414-6461	GSUL	Todd Waller	501-337-6308
DIVS	Steve Gray	770-655-8002	EQPM (t)	Chad Wiley	936-546-1943
DIVS	Matthew Johnson	870-415-0185	EQPM (t)	Brian Truss	936-546-4338
DIVS	Danny Gore	478-456-8516	MEDL	Tim Exline	727-243-4144
DIVS	Matthew Moe	928-220-0043	MEDL (t)	Sherri McDougal	208-803-2026
DIVS (t)	Gabriel Templeton	240-608-5899	FDUL	Shannon Williams	850-838-6715
			RCDM	Donnie Norvell	254-242-8692
<b>AIR OPERATIONS</b>			SECM	Sasha Herrin	239-300-5755
AOBD	Tim Elder	863-243-1438	SECM	Greg Blanks	912-210-3976
ATGS	Steve Little	828-778-2077	SECM	Sean Waggoner	202-527-2639
HEBM	John Nobles	239-777-8455			
HEBM (t)	Joshua Bardwell	936-546-1915			
<b>FINANCE</b>					
FSC2	Reggie Lanier	912-314-1085			
FSC2(t)	Jason Gillis	912-314-9233			
TIME	Laura Wilson	765-427-7564			



# MEDICAL PLAN (ICS 206 WF)

Controlled Unclassified Information//Basic

## Medical Incident Report

**FOR A NON-EMERGENCY INCIDENT, WORK THROUGH CHAIN OF COMMAND TO REPORT AND TRANSPORT INJURED PERSONNEL AS NECESSARY.**

**FOR A MEDICAL EMERGENCY: IDENTIFY ON SCENE INCIDENT COMMANDER BY NAME AND POSITION AND ANNOUNCE "MEDICAL EMERGENCY" TO INITIATE RESPONSE FROM IMT COMMUNICATIONS/DISPATCH.**

**Use the following items to communicate situation to communications/dispatch.**

**1. CONTACT COMMUNICATIONS / DISPATCH (Verify correct frequency prior to starting report)**

*Ex: "Communications, Div. Alpha. Stand-by for Emergency Traffic."*

**2. INCIDENT STATUS: Provide incident summary (including number of patients) and command structure.**

*Ex: "Communications, I have a Red priority patient, unconscious, struck by a falling tree. Requesting air ambulance to Forest Road 1 at (Lat./Long.) This will be the Trout Meadow Medical, IC is TFLD Jones. EMT Smith is providing medical care."*

Severity of Emergency / Transport Priority	<input type="checkbox"/> <b>RED / PRIORITY 1 Life or limb threatening injury or illness. Evacuation need is IMMEDIATE</b> <i>Ex: Unconscious, difficulty breathing, bleeding severely, 2° – 3° burns more than 4 palm sizes, heat stroke, disoriented.</i> <input type="checkbox"/> <b>YELLOW / PRIORITY 2 Serious Injury or illness. Evacuation may be DELAYED if necessary.</b> <i>Ex: Significant trauma, unable to walk, 2° – 3° burns not more than 1-3 palm sizes.</i> <input type="checkbox"/> <b>GREEN / PRIORITY 3 Minor Injury or illness. Non-Emergency transport</b> <i>Ex: Sprains, strains, minor heat-related illness.</i>	
Nature of Injury or Illness & Mechanism of Injury		Brief Summary of Injury or Illness <i>(Ex: Unconscious, Struck by Falling Tree)</i>
Transport Request		Air Ambulance / Short Haul/Hoist Ground Ambulance / Other
Patient Location		Descriptive Location & Lat. / Long. (WGS84)
Incident Name		Geographic Name + "Medical" <i>(Ex: Trout Meadow Medical)</i>
On-Scene Incident Commander		Name of on-scene IC of Incident within an Incident <i>(Ex: TFLD Jones)</i>
Patient Care		Name of Care Provider <i>(Ex: EMT Smith)</i>

**3. INITIAL PATIENT ASSESSMENT: Complete this section for each patient as applicable (start with the most severe patient)**

Patient Assessment: See IRPG page 106

Treatment:

**4. TRANSPORT PLAN:**

Evacuation Location *(if different): (Descriptive Location (drop point, intersection, etc.) or Lat. / Long.)* Patient's ETA to Evacuation Location:

Helispot / Extraction Site Size and Hazards:

**5. ADDITIONAL RESOURCES / EQUIPMENT NEEDS:**

*Example: Paramedic/EMT, Crews, Immobilization Devices, AED, Oxygen, Trauma Bag, IV/Fluid(s), Splints, Rope rescue, Wheeled litter, HAZMAT, Extrication*

**6. COMMUNICATIONS: Identify State Air/Ground EMS Frequencies and Hospital Contacts as applicable**

Function	Channel Name/Number	Receive (RX)	Tone/NAC *	Transmit (TX)	Tone/NAC *
COMMAND					
AIR-TO-GRND					
TACTICAL					

**7. CONTINGENCY: Considerations: If primary options fail, what actions can be implemented in conjunction with primary evacuation method? Be thinking ahead.**

**8. ADDITIONAL INFORMATION: Updates/Changes, etc.**

**REMEMBER: Confirm ETA's of resources ordered. Act according to your level of training. Be Alert. Keep Calm. Think Clearly. Act Decisively.**