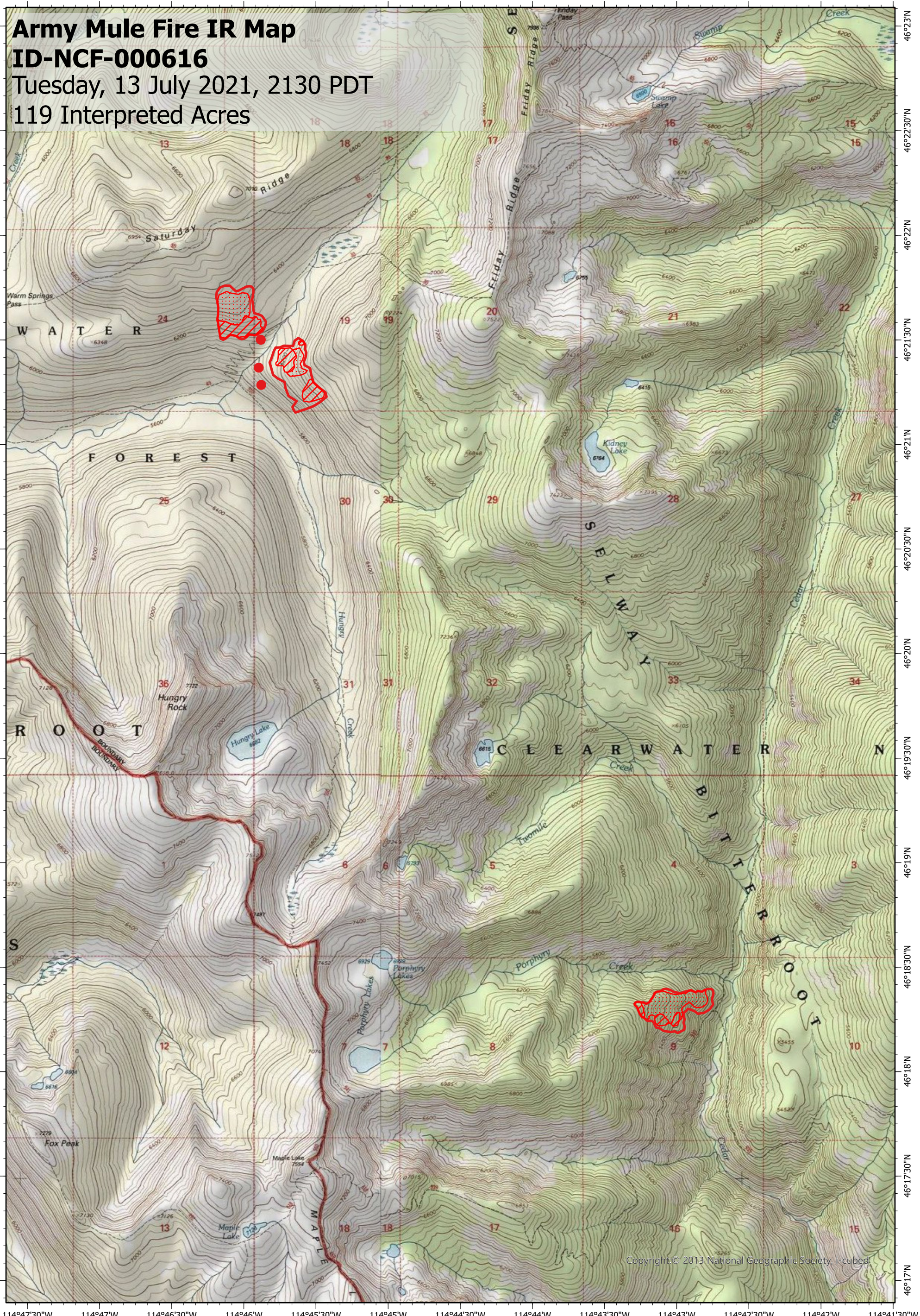


114°47'30"W 114°47'W 114°46'30"W 114°46'W 114°45'30"W 114°45'W 114°44'30"W 114°44'W 114°43'30"W 114°43'W 114°42'30"W 114°42'W 114°41'30"W



Army Mule Fire IR Map
ID-NCF-000616
 Tuesday, 13 July 2021, 2130 PDT
 119 Interpreted Acres

Legend

- Isolated Heat
- ▨ Scattered Heat
- ▧ Intense Heat
- ▭ Burn Perimeter

Scale: 1:45,000
 Projection: WGS 1984
 Produced by: Owyhee Air Research, LLC
 IR Interpreter: S. Osberg
 Contact: fire@owyheear.com (208) 442-5405



114°47'30"W 114°47'W 114°46'30"W 114°46'W 114°45'30"W 114°45'W 114°44'30"W 114°44'W 114°43'30"W 114°43'W 114°42'30"W 114°42'W 114°41'30"W

Copyright © 2013 National Geographic Society, i-cubed