

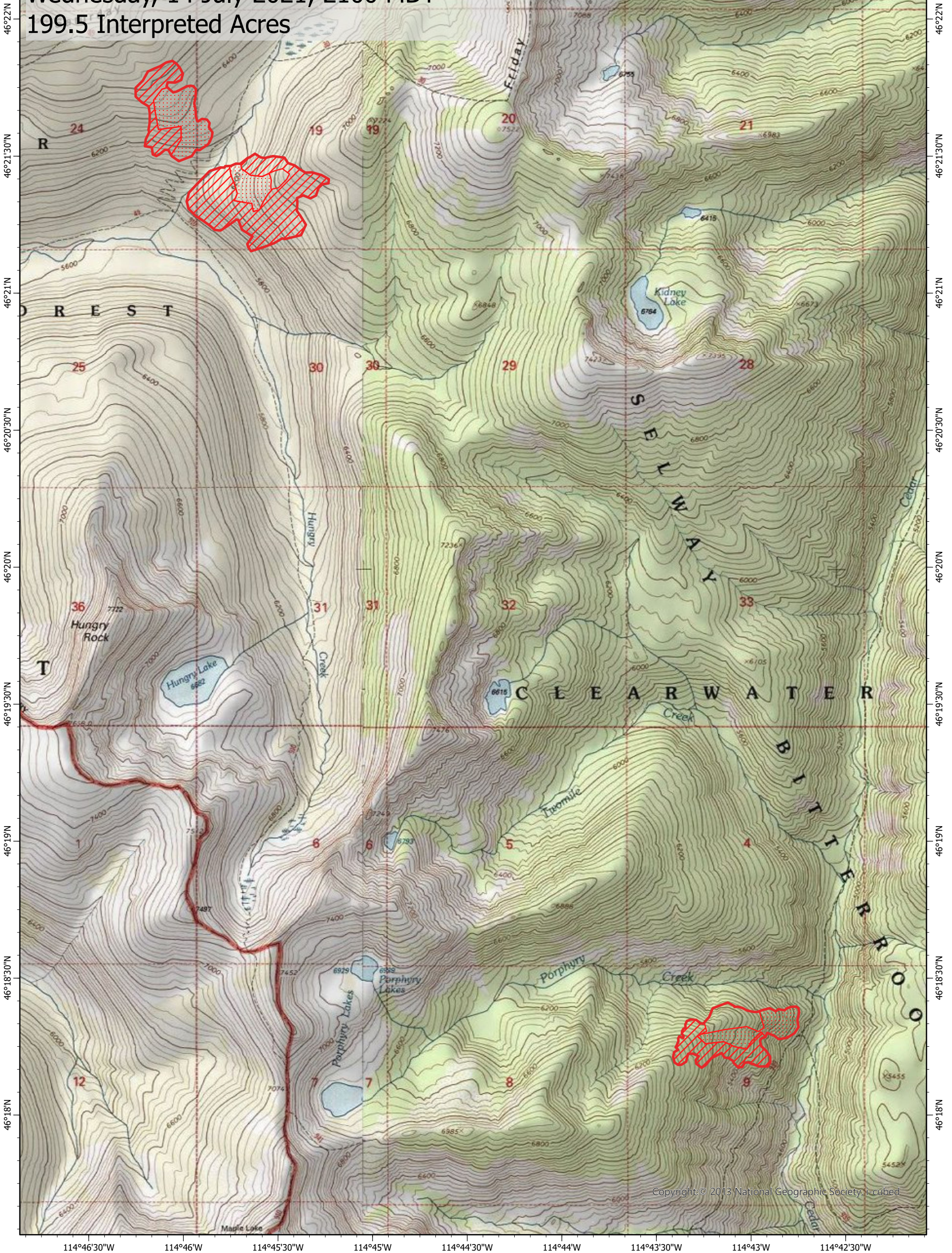
114°46'30"W 114°46'W 114°45'30"W 114°45'W 114°44'30"W 114°44'W 114°43'30"W 114°43'W 114°42'30"W

# Army Mule Fire IR Map

## ID-NCF-000616

Wednesday, 14 July 2021, 2100 MDT

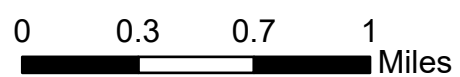
199.5 Interpreted Acres



### Legend

- IR Isolated Heat
- Burn Perimeter
- IR Intense Heat
- IR Scattered Heat

Scale: 1:35,000  
 Projection: WGS 1984  
 Produced by: Owyhee Air Research, LLC  
 IR Interpreter: C. Holley  
 Contact: [fire@owyheear.com](mailto:fire@owyheear.com) (208) 442-5405



Copyright © 2013 National Geographic Society, Inc.